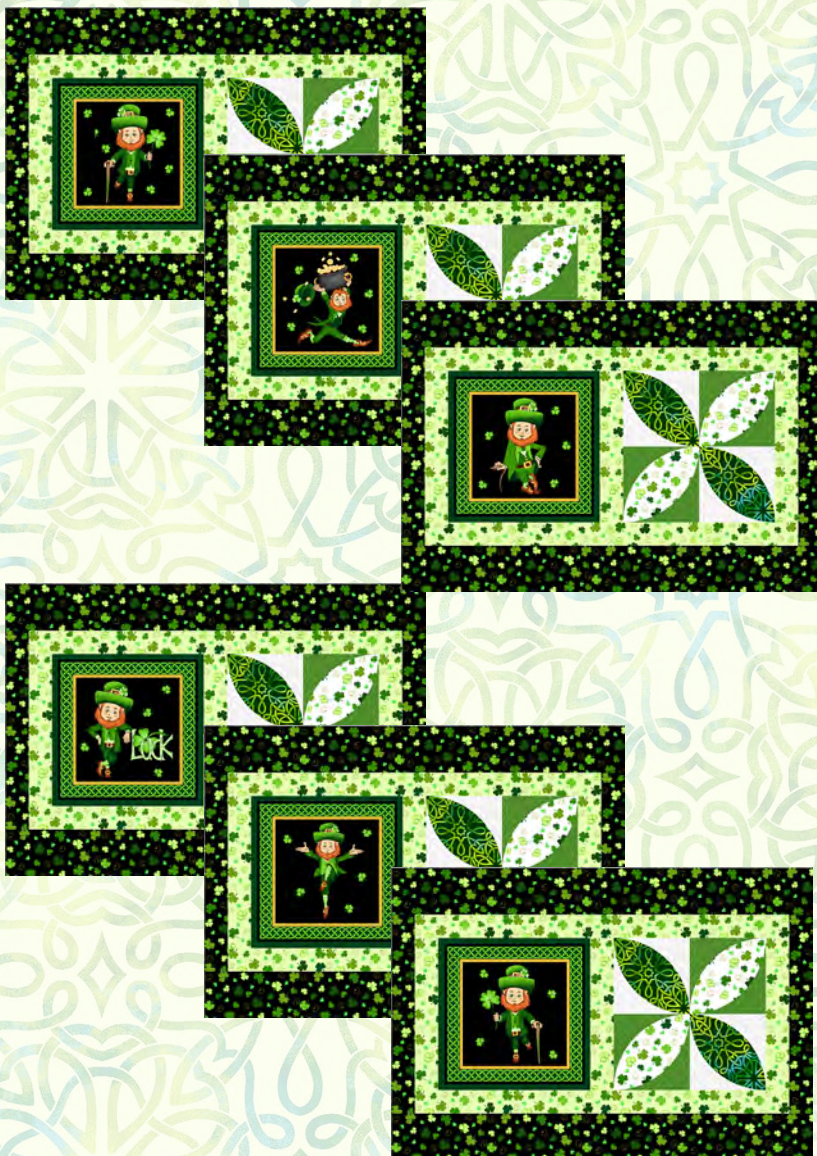


# IRISH FOLK

## Table Runner Set

by Denise Russell



Sizes: Table Runner - 27" x 67"  
Skill Level: Advanced Beginner

Placemats - 11-1/2" x 17"

 **Henry Glass & Co., Inc.**

49 West 37th Street  
New York, NY 10018  
Tel: 212-686-5194 - Fax: 212-532-3525  
Toll Free: 800-294-9495 - [www.henryglassfabrics.com](http://www.henryglassfabrics.com)

**facebook**

Free Project  
NOT FOR RESALE



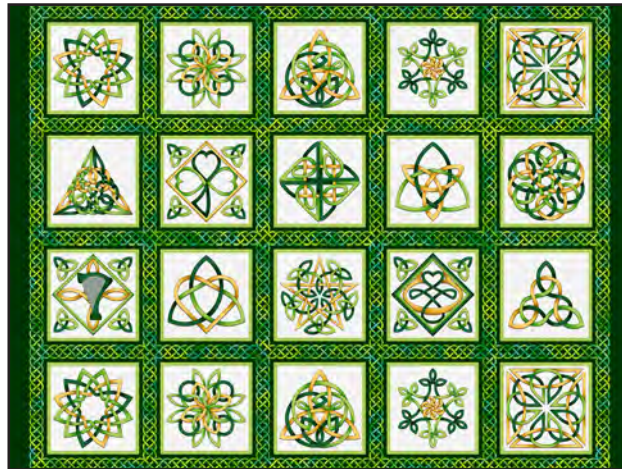


# IRISH FOLK

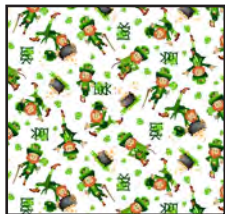
Fabrics in the Collection



2398P-68 Panel - Emerald



2399-68 Celtic Knot Blocks - Emerald



2400-1 Leprechaun Toss  
White



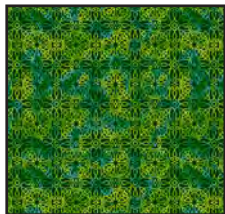
2401-1 Shamrocks  
White



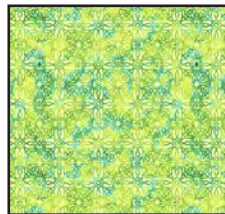
2401-60 Shamrocks  
Green



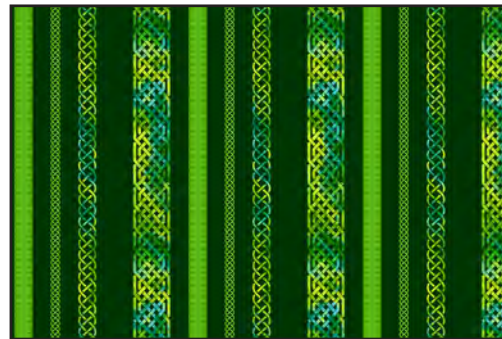
2401-99 Shamrocks  
Black



2402-60 Celtic Knot  
Texture - Green



2402-68 Celtic Knot  
Texture - Emerald



2403-68 Celtic Border Stripe - Emerald

## Selected Fabrics from Modern Melodies Basics



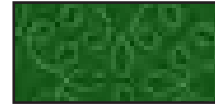
1063-1  
Pigment White



1063-48  
Marigold



1063-67  
Green Grass



1063-69  
Hunter Green

## Materials

*Yardages and cutting instructions are based on 42" of usable fabric width.*

1 2398P-68 Panel-Emerald  
 1/8 yard Modern Melody 1063-48 Marigold  
 1/8 yard Modern Melody 1063-69 Hunter Green  
 1/4 yard 2402-60 Celtic Knot Texture-Green  
 1/4 yard 2401-1 Shamrocks-White  
 3/8 yard Modern Melody 1063-67 Grass Green  
 5/8 yard Modern Melody 1063-01 Pigment White  
 5/8 yard 2402-68 Celtic Knot Texture-Emerald  
 2/3 yard 2401-60 Shamrocks-Green  
 3/4 yard 2403-68 Celtic Border Stripe-Emerald  
 1-1/4 yards 2401-99 Shamrocks-Black  
 3-1/4 yards 2400-1 Leprechaun Toss-White for backing  
 35" x 75" piece of batting for table runner  
 6 pieces of batting, 12" x 18", for placemats  
 Fusible web  
 Plastic for template

## Cut Fabrics

*Note: All strips are cut across the width of the fabric (WOF) from selvage to selvage unless otherwise noted. If cut across the length of the fabric (LOF), the **LOF** notation will be indicated.*

**Note:** *If the center and the smaller squares from the 2398P-68 Panel-Emerald cannot be cut as requested, fussy-cut them as possible leaving enough background fabric all around, then frame the patches by sewing a 1" or 1-1/2" strip of fabric (Modern Melody 1063-67 Grass Green for the center square, and 2401-60 Shamrocks-Green for the small squares) to the sides and press seams toward the strip. Repeat with the top and bottom of each patch and trim them as mentioned in the cutting instructions below.*

### From 2398P-68 Panel-Emerald:

\*Trim center block to 22-1/2" x 26-1/2".  
 \*Fussy-cut six 7" small blocks.

### From Modern Melody 1063-48 Marigold:

\*Cut eighteen circles with template C.

### From Modern Melody 1063-69 Hunter Green:

\*Cut six stems with template A.

### From 2402-60 Celtic Knot Texture-Green:

\*Cut two 2-1/2" x WOF strips.

\*Cut two 2-1/2" squares.

### From 2401-1 Shamrocks-White:

\*Cut twelve orange peels with template E.

### From Modern Melody 1063-67 Grass Green:

\*Cut two 3-3/4" x WOF strips. Sub-cut twelve 3-3/4" squares.

\*Cut six shamrocks with template B.

\*Cut thirty-six circles with template D.

### From Modern Melody 1063-01 Pigment White:

\*Cut two 3-3/4" x WOF strips. Sub-cut twelve 3-3/4" squares.

\*Cut two 5-1/2" x WOF strips. Sub-cut two 5-1/2" x 22-1/2" rectangles (row 3).

### From 2402-68 Celtic Knot Texture-Emerald:

\*Cut five 2-1/2" x WOF strips for binding (table runner).

\*Cut twelve orange peels with template E.

### From 2401-60 Shamrocks-Green:

\*Cut five 1-1/4" x WOF strips for table runner border 1.

\*Cut eight 1-1/2" x WOF strips. Sub-cut **one** strip into six 1-1/2" x 7" placemat sashing strips.

### From 2403-68 Celtic Border Stripe-Emerald

\*Fussy-cut four 3-1/2" x **LOF** strips (widest knot motif). Trim strips to 3-1/2" x 22-1/2" (table runner rows 1 and 7).

\*Fussy-cut four 2" x **LOF** strips (narrowest knot motif). Trim strips to 2" x 22-1/2" (table runner rows 3 and 5).

### From 2401-99 Shamrocks-Black:

\*Cut two 2-1/2" x WOF strips.

\*Cut two 2-1/2" squares.

\*Cut six shamrocks with template B.

- \*Cut five 2-1/4" x WOF strips - table runner border 2.
- \*Cut three 1-1/2" x WOF strips for placemats border 2 (side strips).
- \*Cut six 2-1/2" x WOF strips for placemats border 2 (top/bottom strips).

## Table Topper

### Assemble Blocks

*Note: Measurements include 1/4" seam allowances. Sew with right sides together unless otherwise stated. If no direction is specified, press seams toward darker fabric.*

1. Sew one 2-1/2" 2402-60 Celtic Knot Texture-Green strip to one 2-1/2" 2401-99 Shamrocks-Black strip to make a strip set. Repeat to make two strip sets. Do not press open. Cut strip sets into twenty 2-1/2" sections. Press open. Sew the sections into four strips of five sections each (*figure 1*). Press the seams in one direction.



Figure 1 – Make 4.

2. Sew two 2-1/2" 2402-60 Celtic Knot Texture-Green squares to the Shamrock-Black end of two step 1 strips, and two 2-1/2" 2401-99 Shamrocks-Black squares to the Celtic Knot Texture-Green end of the other two step 1 strips (*figure 2*). Press seams in the same direction as the other seams.

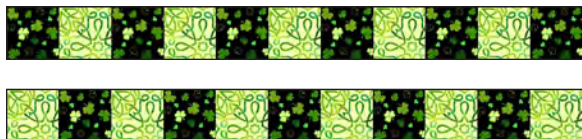


Figure 2 – Make 2 of each.

3. Trace shapes A, B, C, and D on the plastic to make templates. Cut on the outline. Trace templates on the smooth side of the fusible web as listed below. Cut each shape 1/8" outside the outline. Fuse the shapes to the wrong side of the fabrics as listed in the cutting instructions, cut on the outline, and remove paper backing.

a. Shamrocks: trace twelve times.

- b. Large circles: trace eighteen times.
- c. Small circles: trace thirty-six times.
- d. Stems: trace six times.

4. Referring to the table runner photo, position appliqué shapes on the two 5-1/2" x 22-1/2" Modern Melody 1063-01 Pigment White rectangles and fuse them according to manufacturer's instructions (*figure*

3). Machine appliqué using matching thread and the blanket stitch.



Figure 3 – Make 2.

### Assemble Table Topper

5. For rows 1, sew one 3-1/2" x 22-1/2" 2403-68 Celtic Border Stripe-Emerald wide knot motif to the top and one to the bottom of the 22-1/2" x 26-1/2" 2398P-68 Panel-Emerald center block. Press the seams away from the center.

6. For rows 2 and referring to the table runner photo for fabric orientation, sew one step 2 strip to the top and one to the bottom of the table runner center.

7. For rows 3, sew one 2" x 22-1/2" 2403-68 Celtic Border Stripe-Emerald narrow knot motif to the top and one to the top of the table runner center. Press the seams away from the center.

8. For rows 4 and referring to the photo for fabric orientation, sew one step 4 appliqué' rectangle to the top and one to the bottom of the table runner center.

9. Repeat step 7 to add rows 5.

10. Repeat step 6 to add rows 6.

11. Repeat step 5 to add rows 7.

12. For border 1, sew together the 1-1/4" 2401-60



Shamrocks-Green strips end to end using diagonal seams. Measure the vertical length of the table runner through the center and cut two border strips that length. Sew one strip to each side of the runner. Press the seams toward the border strips. Measure the width of the runner through the center. Cut two border strips that length and sew one to the top and one to the bottom. Press the seams toward the borders.

13. Repeat step 12 with the five 2-1/4" 2401-99 Shamrocks-Black strips to make and add border 2.

## Finishing

14. Create a quilt sandwich with the batting between the table runner and the backing. Pin or baste layers together, mark quilting design, and quilt by hand or machine. When quilting is complete, remove pins or basting, and trim batting and backing even with raw edges of the quilt top.

15. Join the five 2-1/2" 2402-68 Celtic Knot Texture-Emerald binding strips together end to end using a diagonal seam to make one long strip. Fold in half lengthwise and press. Sew binding to the edges of the table runner, mitering corners, and overlapping ends. Fold binding to the back of the runner and stitch it in place by hand to finish.

## Placemats

### Assemble Blocks

*Note: Measurements include 1/4" seam allowances. Sew with right sides together unless otherwise stated. If no direction is specified, press seams toward darker fabric.*

1. Trace shape E on the plastic to make a template. Cut on the outline. Trace template on the smooth side of the fusible web twenty-four times. Cut each shape 1/8" outside the outline then cut inside each orange peel to remove most of the fusible web from its middle leaving about 1" inside the outline, making it hollow. Fuse twelve shapes to the wrong side of the 2401-1 Shamrocks-White and twelve to the wrong side of the 2402-68 Celtic Knot Texture-Emerald. Cut orange

peels on the outline and remove paper backing.

2. Position the Shamrocks-White orange peels on the 3-3/4" Modern Melody 1063-67 Grass Green squares, and the Celtic Knot Texture-Emerald on the 3-3/4" Modern Melody 1063-1 Pigment White leaving 1/4" between the orange peel tips and the square corners. Fuse them according to manufacturer's instructions (*figure 1*) and machine appliqué using matching thread and the blanket stitch.



Figure 1 – Make 12 of each.

3. Sew the step 2 units two by two (*figure 2*) to make twelve strips. Press the seams in one direction.



Figure 2 – Make 12.

4. Sew the step 3 strips together to make six 7" blocks (*figure 3*). Press the seams open.



Figure 3 – Make 6.

5. Noting block orientation, sew one 1-1/2" x 7" 2401-60 Shamrocks-Green sashing strip in between one 7" 2398P-68 Panel-Emerald square and one step 4 block (*figure 4*). Press seams toward sashing. Repeat to make six placemat centers.



Figure 4 – Make 6.

## Assemble Placemats

6. For border 1, join the 1-1/2" 2401-60 Shamrocks-Green border strips together end to end using diagonal seams. Sew the strip to the right side of each placemat center and cut the extra length. Repeat with the left side. Press the seams toward the border strips. In the same manner, sew one strip to the top and one to the bottom of each placemat. Press the seams toward the borders.

7. For border 2, join the three 1-1/2" 2401-99 Shamrocks-Black strips end to end using diagonal seams. Stitch a border strip to each side of the placemats and trim the extra length. Press the seams toward the border. In the same manner, join the six 2" 2401-99 Shamrocks-Black strips and sew one border to the top

and another to the bottom of each placemat. Press the seams toward the borders.

## Finishing

8. Cut remainder 2400-1 Leprechaun Toss-White backing fabric into six 12" x 18" rectangles. Layer the placemat centers **right sides together** atop the backing rectangles. Layer a piece of batting on top. Sew around the edge of the placemats with a 1/4" seam allowance and leaving a 4" opening. Trim placemats at the seam allowance.

9. Turn placemats inside out, close opening with a hand stitch (or pin to close them when topstitching), press, and topstitch 1/2" inside the edges.

©2019 Henry Glass & Co. Inc.

*Every effort has been made to ensure that all projects are error free. All the information is presented in good faith; however, no warranty can be given nor results guaranteed as we have no control over the execution of instructions. Therefore, we assume no responsibility for the use of this information or damages that may occur as a result. When errors are brought to our attention, we make every effort to correct and post a revision as soon as possible. Please make sure to check [www.henryglassfabrics.com](http://www.henryglassfabrics.com) for pattern updates prior to starting the project. We also recommend that you test the project prior to cutting for kits. Finally, all free projects are intended to remain free to you and are not for resale.*

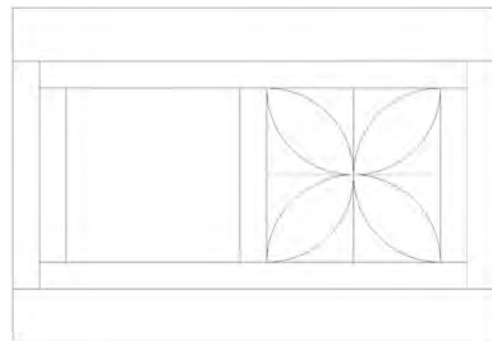
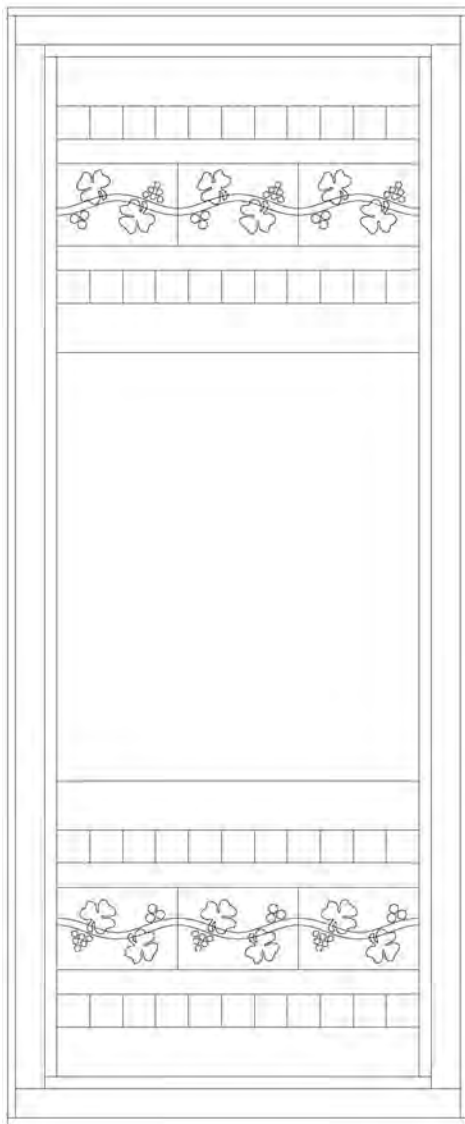


Table Runner and Placemat Diagrams

## Templates

