

IRISH BLESSING

by Janet Nesbitt of

ONE SISTER



Quilt size: 60" x 54"

Skill Level: Intermediate

Quilt 1

Designed by Denise Russell



Henry Glass & Co., Inc.

49 West 37th Street
New York, NY 10018

Tel: 212-686-5194 - Fax: 212-532-3525

Toll Free: 800-294-9495 - www.henryglassfabrics.com

facebook

Free Project
NOT FOR RESALE

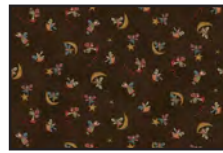


IRISH BLESSING

Fabrics in the Collection



2364P -Angel Panel-Teal



2365-38 Angel Toss
Brown



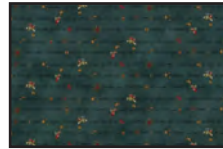
2365-77 Angel Toss
Teal



2365-88 Angel Toss
Red



2366-66 Words
Green



2366-77 Words
Teal



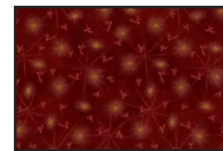
2366-88 Words
Red



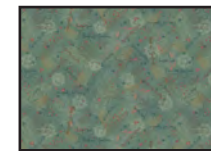
2367-44 Sunshine
& Moonbeams-Gold



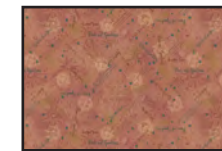
2367-66 Sunshine
& Moonbeams-Green



2367-88 Sunshine
& Moonbeams-Red



2368-17 Mixed Media
Lt. Teal



2368-22 Mixed Media
Rose



2368-33 Mixed Media
Cream/Tan



2369-17 Halos
Lt. Teal



2369-22 Halos
Rose



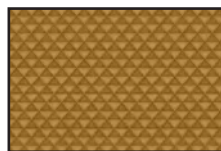
2369-33 Halos
Cream/Tan



2370-33 Half Square
Triangles-Cream/Tan



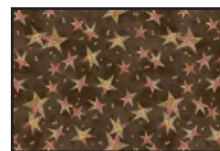
2370-38 Half Square
Triangles-Brown



2370-44 Half Square
Triangles-Gold



2371-17 Swirly Stars
Lt. Teal



2371-38 Swirly Stars
Brown



2371-44 Swirly Stars
Tan

Selected fabrics from the Linen Closet Collection



8568-44 Tossed
Flowers-Cream



8569-44 Confetti
Wedding Ring-Cream



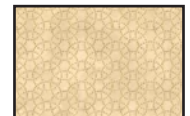
8570-44 Swirling
Flower Dot-Cream



8572-44 Stripe
Cream



8573-33 Wedding
Ring-Tan



8573-44 Wedding
Ring-Cream

Selected fabrics from the One Sister Yarn Dyes Collection



8685Y-88 Red



8686Y-38 Brown



8687Y-23
Pink/Brown



8689Y-88
Dk. Rose

IRISH BLESSING - Quilt 1

Page 1

Materials

Yardages and cutting instructions are based on 42" of usable fabric width.

1/4 yard 2366-66 Words-Green
1/4 yard 2366-77 Words-Teal
1/4 yard 2366-88 Words-Red
1/4 yard 2367-44 Sunshine & Moonbeams-Gold
1/4 yard 2367-88 Sunshine & Moonbeams-Red
1/4 yard 2368-17 Mixed Media-Lt. Teal
1/4 yard 2370-33 Half Square Triangles-Cream
1/4 yard 2370-38 Half Square Triangles-Brown
1/4 yard 2371-17 Swirly Stars-Lt. Teal
1/4 yard One Sister Yarn Dyes 8685Y-88 Red
1/4 yard One Sister Yarn Dyes 8686Y-38 Brown
1/4 yard One Sister Yarn Dyes 8687Y-23 Pink/Brown
1/4 yard One Sister Yarn Dyes 8689Y-88 Dk. Rose
1/3 yard 2371-38 Swirly Stars-Brown
3/8 yard 2369-22 Halos-Rose
3/8 yard 2367-66 Sunshine & Moonbeams-Green
3/8 yard 2365-38 Angel Toss-Brown
3/8 yard 2370-44 Half Square Triangles-Gold
3/8 yard Linen Closet 8573-33 Wedding Ring-Tan
1/2 yard 2371-44 Swirly Stars-Tan
1/2 yard 2369-17 Halos-Lt. Teal
5/8 yard Linen Closet 8568-44 Tossed Flowers-Cream
5/8 yard 2368-22 Mixed Media-Rose
2/3 yard Linen Closet 8573-44 Wedding Ring-Cream
2/3 yard 2365-77 Angel Toss-Teal
2/3 yard Linen Closet 8572-44 Stripe-Cream
1 yard Linen Closet 8570-44 Swirling Flower Dot-Cream
1-1/8 yards Linen Closet 8569-44 Confetti Wedding Ring-Cream
4-1/2 yards 2365-88 Angel Toss-Red
68" x 62" piece of batting
Fusible Web and Tracing paper
Add-a-Quarter© ruler, postcard or credit card

Cut Fabrics

Note: *All strips are cut across the width of the fabric (WOF) from selvage to selvage unless otherwise noted. If cut across the length of the fabric (LOF), the LOF notation will be indicated.*

From 2366-66 Words-Green:

*Cut one angel dress with Template W.

From 2366-77 Words-Teal:

*Cut one 5-1/2" x WOF strip. Sub-cut:
- One angel dress with Template X; and
- Three 4" x 7" rectangles. (S4-B2)

From 2366-88 Words-Red:

*Cut one angel dress with template W.
*Cut one angel dress with template X.

From 2367-44 Sunshine & Moonbeams-Gold:

*Cut one 5-1/2" x WOF strip. Sub-cut:
- One angel dress with template X; and
- Six 4" x 7" rectangles. (S2/S3-B2)

From 2367-88 Sunshine & Moonbeams-Red:

*Cut three 5" x 6" rectangles. (S3-C1)

From 2370-33 Half Square Triangles-Cream:

*Cut three 5" x 6" rectangles. (S2-C1)

From 2368-17 Mixed Media-Lt. Teal:

*Cut one 5-1/2" x WOF strip. Sub-cut:
- One angel dress with template X; and
- Three 3-1/4" x 4-1/4" rectangles. (S3-C2)

From 2370-38 Half Square Triangles-Brown:

*Cut three 3-1/4" x 4-1/4" rectangles. (S2-C2)

From 2371-17 Swirly Stars-Lt. Teal:

*Cut one 5-1/2" x WOF strip. Sub-cut:
- One angel dress with template X; and
- Three 3-1/4" x 4-1/4" rectangles. (S4-C2)

From 8685Y-88 Red:

*Cut three 3-1/4" x 4-1/4" rectangles. (S1-C2)

From 8686Y-38 Brown:

*Cut three 4" x 7" rectangles. (S1-C3)

From 8689Y-88 Dk. Rose:

*Cut three 3-1/4" x 4-1/4" rectangles. (S1-D2)

From 8687Y-23 Pink/Brown:

*Cut three 4" squares. (S1-A2)

IRISH BLESSING - Quilt 1

Page 2

From 2371-38 Swirly Stars-Brown:

* Cut six 4" x 7" rectangles. (S1-B2, S2-C3)

From 2369-22 Halos-Rose:

*Cut three 1-1/2" x WOF strips for border 1.

*Cut two 2" x WOF strips for border 1.

*Cut twelve circles for angel's head (template Z).

From 2367-66 Sunshine & Moonbeams-Green:

*Cut two 1-7/8" x WOF strips. Sub-cut thirty 1-7/8" squares.

*Cut one 5-1/2" x WOF strip. Sub-cut:

- One angel dress with template W.

- Three 4" x 7" rectangles. (S4-C3)

From 2365-38 Angel Toss-Brown:

*Cut one 5-1/2" x WOF strip. Sub-cut:

- One angel dress with template X;

- Three 4" squares (S4-A2); and

- Three 4" x 7" rectangles. (S3-C3)

From 2370-44 Half Square Triangles-Gold:

*Cut one 5-1/2" x WOF strip. Sub-cut:

- One angel dress with template W;

- Three 4" squares (S3-A2); and

- Three 3-1/4" x 4-1/4" rectangles. (S4-D2)

From 8573-33 Wedding Ring-Tan:

*Cut six angel wings with template Y-L.

*Cut six angel wings with template Y-R.

From 2371-44 Swirly Stars-Tan:

*Cut one 2" x WOF strip. Sub-cut four 2" squares.

*Cut five 2" x WOF strips for border 2.

From 2369-17 Halos-Lt. Teal:

*Cut three 1-1/2" x WOF strips. Sub-cut sixty 1-1/2" squares.

*Cut two 2-1/2" x WOF strips. Sub-cut thirty 2-1/2" squares.

*Cut one 3-1/4" x WOF strip. Sub-cut six 3-1/4" x 4-1/4" rectangles. (S2/S3-D2)

From 8568-44 Tossed Flowers-Cream:

*Cut one 4-1/4" x WOF strip. Sub-cut five 4-1/4" x

7-1/2" rectangles. (S3-B1, D1)

*Cut one 7-1/2" x WOF strip. Sub-cut three 7-1/2" x 10" rectangles. (S3-B3)

*Cut one 6-1/4" x WOF strip. Sub-cut:

- Three 4" x 6-1/4" rectangles (S3-A1);

- Three 5-1/2" x 6-1/4" (S3-A3); and

- One 4-1/4" x 7-1/2" rectangles (for a total of six).

From 8573-44 Wedding Ring-Cream:

*Cut two 4-1/4" x WOF strips. Sub-cut:

- Three 4" x 6-1/4" rectangles (S4-A1); and

- Six 4-1/4" x 7-1/2" rectangles. (S4-B1, D1)

*Cut one 5-1/2" x WOF strip. Sub-cut three 5-1/2" x 6-1/4" rectangles. (S4-A3)

*Cut one 7-1/2" x WOF strip. Sub-cut three 7-1/2" x 10" rectangles. (S4-B3)

From 2368-22 Mixed Media-Rose:

*Cut one 5-1/2" x WOF strip. Sub-cut:

- One angel dress with template X;

- Six 5" x 6" rectangles. (S1/S4-C1)

*Cut three 1-1/2" x WOF strips. Sub-cut sixty 1-1/2" squares.

*Cut two 1-7/8" x WOF strips. Sub-cut thirty 1-7/8" squares.

From 2365-77 Angel Toss-Teal:

*Cut one 2" x WOF strip. Sub-cut:

- Four 2" squares;

- Four 2" x 3-1/2" rectangles.

*Cut one 5-1/2" x WOF strip. Sub-cut:

- One angel dress with template W; and

- Three 4" squares (S2-A2); and

- Two 3-7/8" squares.

*Cut five 2" x WOF strips for border 3.

From 8572-44 Stripe-Cream:

*Cut two 10-1/2" x WOF strips. Sub-cut twelve 5-1/2" x 10-1/2" rectangles.

From 8569-44 Confetti Wedding Ring-Cream:

*Cut three 7-1/2" x WOF strips. Sub-cut:

- Six 7-1/2" x 10" rectangles (S1/S2-B3); and

- Eight 4-1/4" x 7-1/2" rectangles. (S1/S2-B1, D1)

*Cut two 6-1/4" x WOF strips. Sub-cut:

- Six 4" x 6-1/4" rectangles (S1/S2-A1);

IRISH BLESSING - Quilt 1

Page 3

- Six 5-1/2" x 6-1/4" rectangles (S1/S2-A3); and
- Four 4-1/4" x 7-1/2" rectangles (for a total of twelve rectangles). (S1/S2-B1, D1)

From 8570-44 Swirling Flower Dot-Cream:

- *Cut three 1-1/2" x WOF strips. Sub-cut sixty 1-1/2" squares.
- *Cut three 1-7/8" x WOF strips. Sub-cut sixty 1-7/8" squares.
- *Cut four 2-1/2" x WOF strips. Sub-cut ninety 1-1/2" x 2-1/2" rectangles.
- *Cut one 3-1/2" x WOF strip. Sub-cut eight 3-1/2" squares.
- *Cut one 3-7/8" x WOF strip. Sub-cut two 3-7/8" squares.

From 2365-88 Angel Toss-Red (binding and backing):

- *Cut six 2-1/2" x WOF strips for binding.
- Use remaining yardage for backing.

Assemble Blocks

Notes: a. Measurements include 1/4" seam allowances. Sew with right sides together unless otherwise stated. If no direction is specified, press seams toward darker fabric.

b. Separate fabric pieces in groups labeled S1 (Star 1), S2, S3, and S4 with their corresponding pieces as mentioned in the cutting instructions above: A1, A2, A3, B1, B2, B3, C1, C2, C3, D1, and D2.

1. Trace the star sections templates A, B, C, and D onto the tracing paper including the numbers. Stack eleven tracing sheets under each sheet you just traced and staple each stack once or twice. Using the sewing machine with an old, small gauge needle and no thread (even in the bobbin), set the stitch length to 10-12 stitches per inch and carefully sew on the lines (except the outside edges). Repeat with remaining templates to make twelve perforated sets of each star section. Copy numbers onto each one.

1a. The instructions on the next steps are for Star 1. Please refer to the Table 1 below for the fabrics in each star section.

Patches	Star 1	Star 2
	<i>Fabrics in each star</i>	
A1, A2, A3	8569-44, 8687Y-23 , 8569-44	8569-44, 2365-77 , 8569-44
B1, B2, B3	8569-44, 2371-38 , 8569-44	8569-44, 2367-44 , 8569-44
C1, C2, C3	2368-22, 8685Y-88 , 8686Y-38	2370-33, 2370-38 , 2371-38
D1, D2	8569-44, 8689Y-88	8569-44, 2369-17

Patches	Star 3	Star 4
	<i>Fabrics in each star</i>	
A1, A2, A3	8568-44, 2370-44 , 8568-44,	8573-44, 2365-38 , 8573-44
B1, B2, B3	8568-44, 2367-44 , 8568-44,	8573-44, 2366-77 , 8573-44
C1, C2, C3	2367-88, 2368-17 , 2365-38	2368-22, 2371-17 , 2367-66
D1, D2	8568-44, 2369-17	8573-44, 2370-44

Table 1 – Patches and numbers in bold are intended to facilitate reading.

2. With the **unmarked** side (numbers will look reversed) of the A foundation right side up, pair a 4" x 6-1/4" 8569-44 Confetti Wedding Ring-Cream rectangle (this patch will touch the paper) with a 4" 8687Y-23 Pink/

IRISH BLESSING - Quilt 1

Page 4

Brown square with right sides together, layer the pair onto the foundation so the fabric edges extend at least 1/4" beyond all lines of piece 1, and pin. **Turn foundation over to its marked side and stitch on the line** between pieces 1 and 2 (*figure 1*). [Reduce stitch length to 1.6 or 1.8 to facilitate paper removal later].

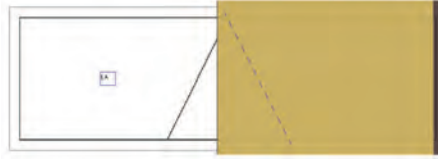


Figure 1

3. Finger press patch open. Place a postcard or credit card edge against the next stitch line between pieces 2 and 3, fold foundation over the card, align the lip of the Add-a-Quarter© ruler with the edge of the card, and trim the fabric (*figure 2*).

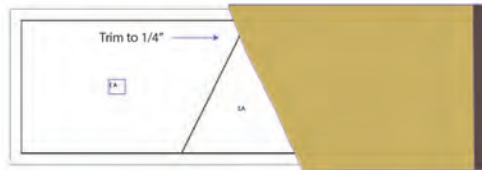


Figure 2

4. Place a 5-1/2" x 6-1/4" 8569-44 Confetti Wedding Ring-Cream rectangle over the trimmed fabrics, aligning the edges, turn foundation over to its marked side, and stitch on the line between pieces 2 and 3 as in step 2. Finger press open and trim the fabrics as in step 3 (*figure 3*).

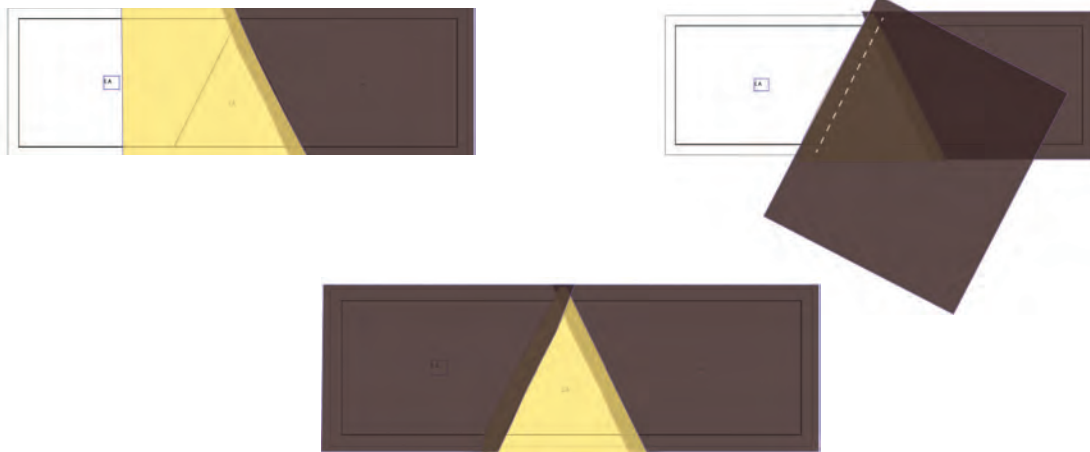


Figure 3

5. Repeat steps 2 – 4 with sections B, C, and D of the star, referring to the Table 1 on page 3 for fabric placement. Following the Star diagram on page 9, join sections C and D. Next, join section B and A to create the stars. Press seam open and remove tracing paper. Repeat to make three Stars 1 (*figure 4*).

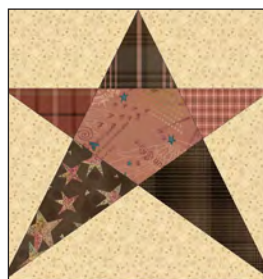
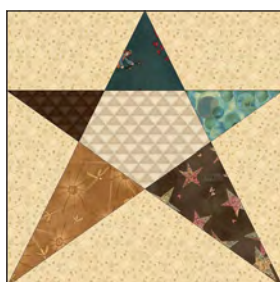


Figure 4 - Make 4.

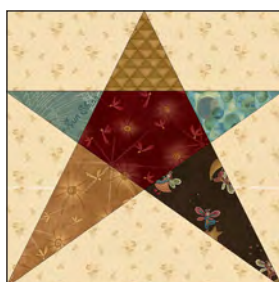
IRISH BLESSING - Quilt 1

Page 5

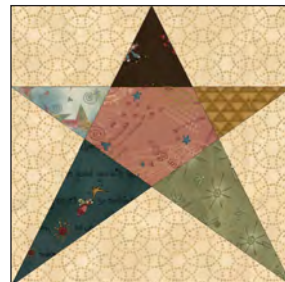
6. Repeat steps 2-5 with the remaining foundation papers and fabric pieces to make three stars 2, 3, and 4 (*figure 5*).



Star 2



Star 3



Star 4

Figure 5 – Make 3 of each.

7. Trace angel shapes W, X, Y-R, Y-L, and Z on the plastic to make templates. Cut on the outline. Trace templates on the smooth side of the fusible web: template Z – twelve times; templates W and Y-L five times; templates X and X-R seven times. Cut shapes 1/8" outside the outline, then cut inside shapes Y (wing), W and X (dresses) to remove most of the fusible web from its middle leaving about 1" inside and making them hollow. Fuse the shapes to the wrong side of the fabrics as listed on Table 2 below, cut on the outline, and remove paper backing.

Angel Head Z	Wings Y-L and X-R	Dresses W	Dresses X
2369-22	8573-33	2366-66, 2366-88 , 2367-66, 2370-44, 2365-77.	2366-77, 2366-88 , 2367-44, 2368-17, 2371-17, 2365-38, 2368-22.

Table 2. Fabrics for angels.

8. Position angel appliqué shapes on the 5-1/2" x 10-1/2" 8572-44 Stripe-Cream rectangles and fuse them according to the fusible web manufacturer's instructions (*figure 6*). Machine appliqué using matching thread and the blanket stitch. Make twelve angel blocks.



Figure 6 – Make 12.

9. Draw a diagonal line on the wrong side of the two 3-7/8" 8570-44 Swirling Flower Dot-Cream squares. With right sides together, layer the marked Swirling Flower Dot-Cream squares atop the 3-7/8" 2365-77 Angel Toss-Teal squares. Stitch 1/4" on each side of the marked line, cut on the drawn line, press each unit open with seams toward dark fabric, and trim dog ears (*figure 7*, next page). Make a total of four half-square triangles.

IRISH BLESSING - Quilt 1

Page 6

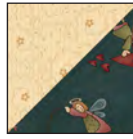


Figure 7 – Make 4.

10. Sew the 2" 2371-44 Swirly Stars-Tan squares to the 2" 2365-77 Angel Toss-Teal squares (*figure 8*). Press seams to the dark fabric.

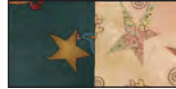


Figure 8

11. Noticing fabric orientation, sew a 2" x 3-1/2" 2365-77 Angel Toss-Teal rectangle to each step 10 unit (*figure 9*). Press seam toward rectangle.

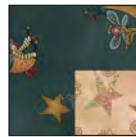


Figure 9 – Make 4.

12. Assemble four 4-patch units with the step 10 and step 11 units and the eight 3-1/2" 8570-44 Swirling Flower Dot-Cream squares (*figure 9*). Press seams open.

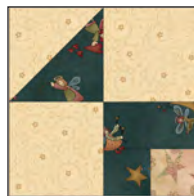


Figure 9 – Make 4.

13. Draw a diagonal line on the wrong side of the 1-1/2" 2369-17 Halos-Lt. Teal squares. With right sides together, layer a marked Halos-Lt. Teal square on the left short end of a 1-1/2" x 2-1/2" 8570-44 Swirling Flower Dot-Cream rectangle and stitch on the drawn line. Trim 1/4" away from the seam line and press open. In the same manner, stitch another Halos-Lt. Teal square to the opposite end of the same rectangle. Repeat to make a total of thirty flying-geese units (*figure 10*).



Figure 10 – Make 30.

14. Sew one 1-1/2" x 2-1/2" 8570-44 Swirling Flower Dot-Cream rectangle to the left and one to the right side of the step 13 flying geese (*figure 11*). Press seams away from center. Make a total of thirty 1-1/2" x 6-1/2" strips.



Figure 11 – Make 30.

IRISH BLESSING - Quilt 1

Page 7

15. Draw a diagonal line on the wrong side of the 1-7/8" 8570-44 Swirling Flower Dot-Cream squares. With right sides together, layer the marked Swirling Flower Dot-Cream squares atop the 1-7/8" 2368-22 Mixed Media-Rose squares. Stitch 1/4" on each side of the marked line, cut on the drawn line, press each unit open with seams toward dark fabric, and trim dog ears (*figure 12*). Make a total of sixty half-square triangles (HST).



Figure 12 – Make 60.

16. Sew one 1-1/2" 8570-44 Swirling Flower Dot-Cream square to the left side of thirty step 15 HST, and one 1-1/2" Swirling Flower Dot-Cream square to the right side of the remaining thirty step 15 HST (*figure 13*). Press seams toward squares.



Figure 13 – Make 30 of each.

17. Repeat step 15 with the remaining 1-7/8" 8570-44 Swirling Flower Dot-Cream squares and the 1-7/8" 2367-66 Sunshine & Moonbeams-Green squares to make sixty HST (*figure 14*).



Figure 14 – Make 60.

18. Sew one 1-1/2" 2368-22 Mixed Media-Rose square to the left side of thirty step 17 HST, and one 1-1/2" Mixed Media-Rose square to the right side of the remaining thirty step 17 HST (*figure 15*). Press seams toward squares.



Figure 15 – Make 30 of each.

19. Sew the step 18 strips to the step 16 strips to make thirty 4-patches of each type (*figure 16*). Press seams open.

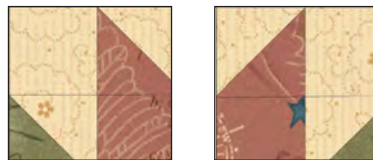


Figure 16 – Make 30 of each.

20. Sew one step 19 4-patch of each type to opposite sides of a 2-1/2" 2369-17 Halos-Lt. Teal square (*figure 17*). Repeat to make thirty strips. Press seams toward center square.



Figure 17 – Make 30.

IRISH BLESSING - Quilt 1

Page 8

21. Sew the step 14 strips to the top of the step 20 strips to make thirty blocks (*figure 18*). Press seams open.

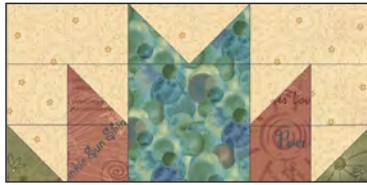


Figure 16 – Make 30 3-1/2" x 6-1/2" blocks.

Assemble Quilt Top

22. Following the quilt photo and diagram for block placement, lay out four rows of six alternating blocks each. Sew the blocks together in each row, then sew the rows together in order, matching adjacent seams.

23. For border 1, sew one 2" 2369-22 Halos-Rose strip to the right and one to the left side of the quilt top. Trim extra length and press seams toward border. For the top and bottom, sew together the three 1-1/2" 2369-22 Halos-Rose strips end to end using diagonal seams. Stitch a border strip to the top of the quilt center and trim the extra length. In the same manner, stitch one border to the bottom. Press seams toward the border.

24. For border 2, sew five 2371-44 Swirly Stars-Tan 2" border strips together end to end using diagonal seams. Measure the vertical length of the quilt top through the center and cut two border 2 strips that length. Sew one strip to each side of the quilt top. Measure the width of the quilt top through the center. Cut two border 2 strips that length and sew one to the top and one to the bottom. Press the seams toward the borders.

25. Repeat step 24 with the five 2" 2365-77 Angels Toss-Teal strips to make and add border 3.

26. Arrange seven step 21 blocks for each side of the quilt. Sew blocks together and sew one border strip to each side of the quilt center. Press seams toward quilt center.

27. Repeat step 26 with the step 12 corner blocks and the remainder step 21 blocks, and sew one border strip to the top and one to the bottom of the quilt center.

Finishing

28. Create a quilt sandwich with the batting between the quilt top and the backing. Pin or baste layers together, mark quilting design, and quilt by hand or machine. When quilting is complete, remove pins or basting, and trim batting and backing even with raw edges of the quilt top.

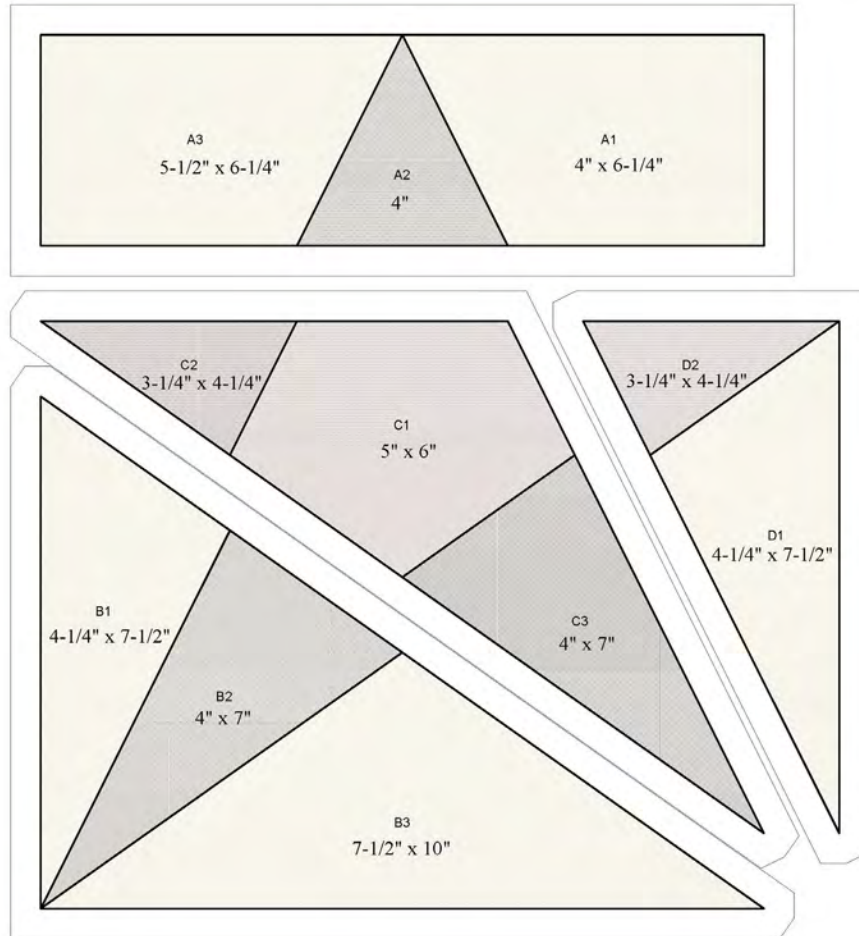
29. Join the six 2-1/2" 2365-88 Angel Toss-Red binding strips together end to end using a diagonal seam to make one long strip. Press in half lengthwise. Sew binding to the edges of the quilt top, mitering corners, and overlapping ends. Fold binding to the back of the quilt and stitch it in place by hand to finish.

©2019 Henry Glass & Co. Inc.

Every effort has been made to ensure that all projects are error free. All the information is presented in good faith; however, no warranty can be given nor results guaranteed as we have no control over the execution of instructions. Therefore, we assume no responsibility for the use of this information or damages that may occur as a result. When errors are brought to our attention, we make every effort to correct and post a revision as soon as possible. Please make sure to check www.henryglassfabrics.com for pattern updates prior to starting the project. We also recommend that you test the project prior to cutting for kits. Finally, all free projects are intended to remain free to you and are not for resale.

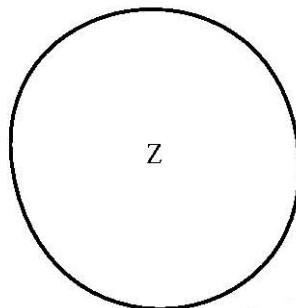
IRISH BLESSING - Quilt 1

Page 9



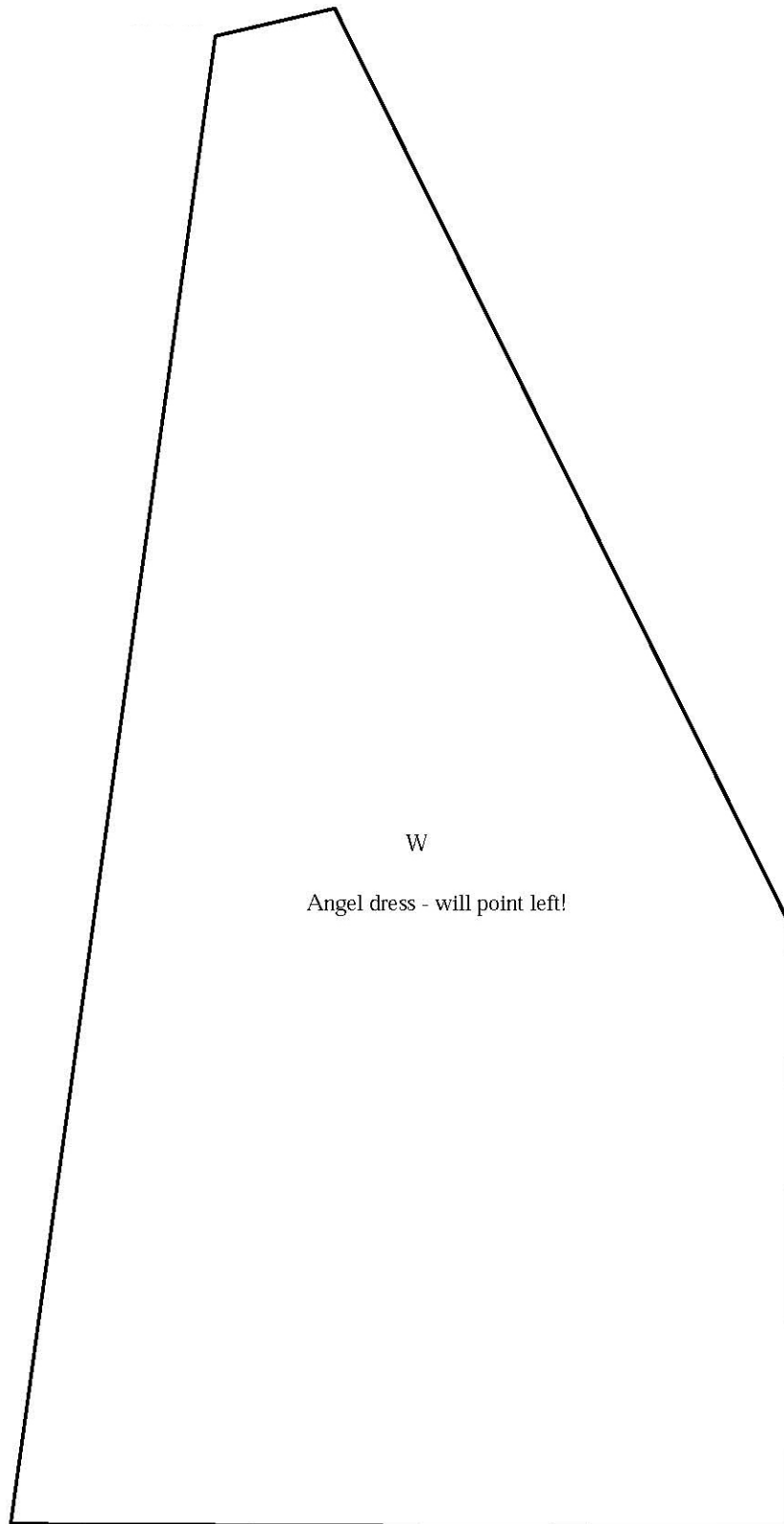
Templates

Sized for machine applique. Add 1/4" all around if you choose to needle-turn applique.



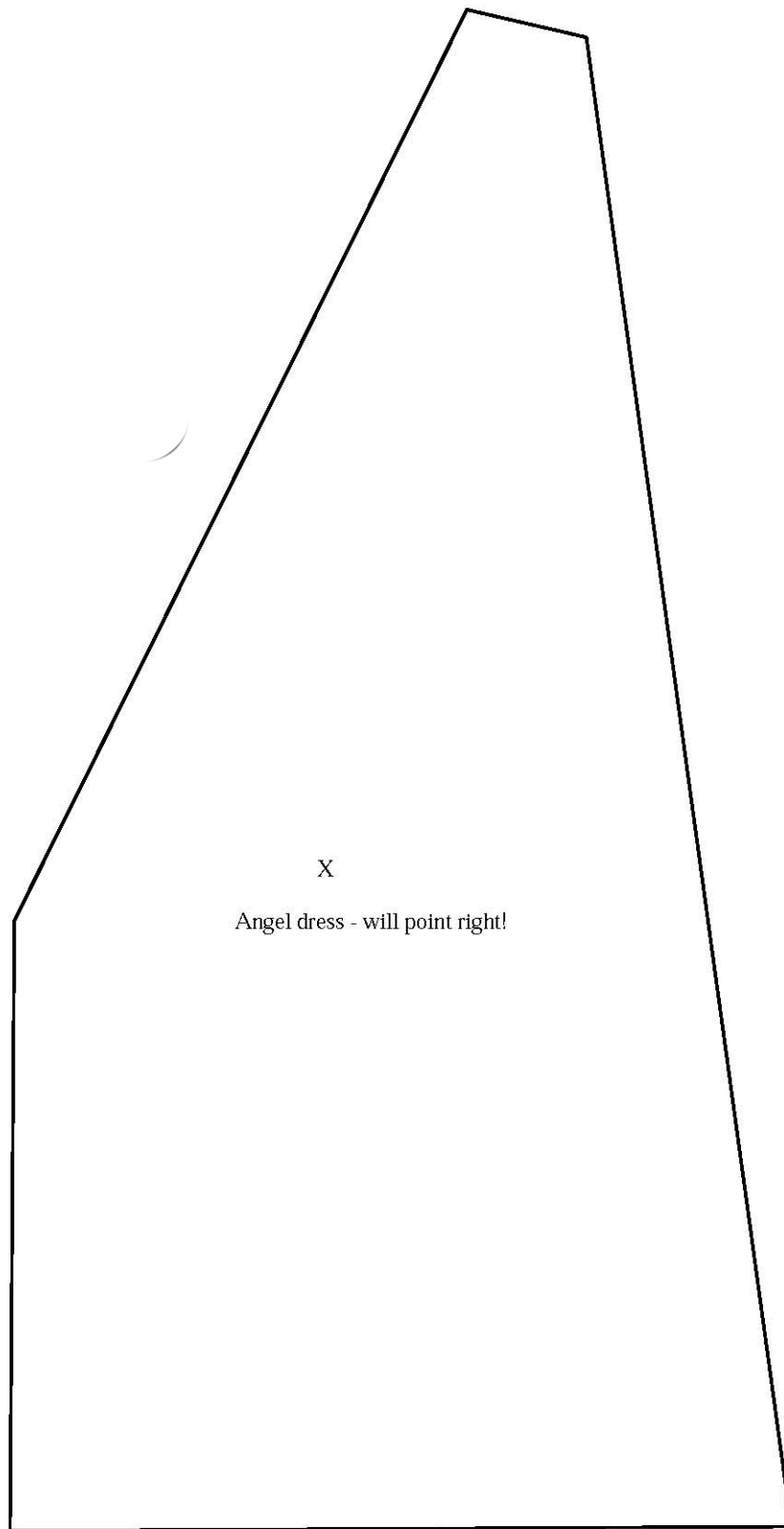
IRISH BLESSING - Quilt 1

Page 10



IRISH BLESSING - Quilt 1

Page 11



IRISH BLESSING - Quilt 1

Page 12

