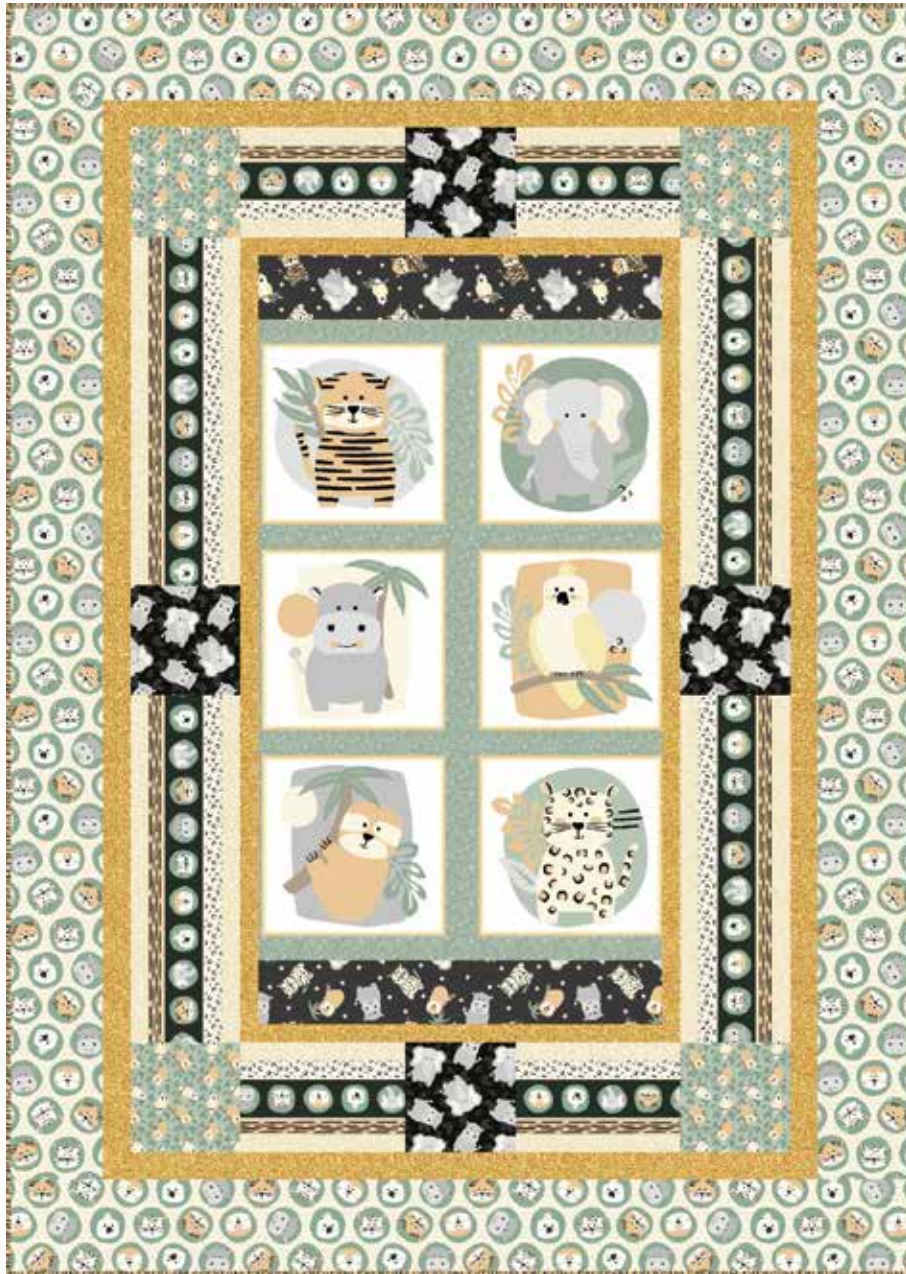


Into the Jungle

• A Free Project Sheet
• NOT FOR RESALE

By Jessica Mundo

Quilt Design by Heidi Pridemore



Quilt 1

Skill Level: Advanced Beginner

 Henry Glass & Co., Inc.



facebook

Finished Quilt Size: 49" x 69"
(124.46 cm x 175.26 cm)

49 West 37th Street, New York, NY 10018

tel: 212-686-5194 fax: 212-532-3525

Toll Free: 800-294-9495

www.henryglassfabrics.net

Please check our website for pattern updates before starting this project.

INTO THE JUNGLE Quilt 1

Finished Quilt Size: 49" x 69"
(124.46 cm x 175.26 cm)

Fabrics in the Collection



Jungle Scenic
Green – 885-64



Diagonal Plaid
Multi – 886-64



Tossed Faces
Cream – 887-46



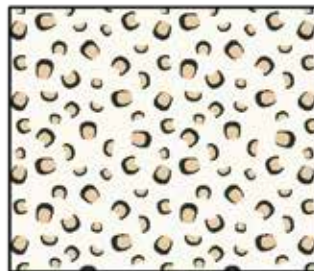
Tossed Elephants & Hippos
Charcoal – 888-99



Leaves
Multi – 889-96



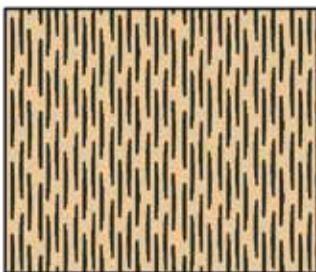
Tossed Jungle Animals
Charcoal – 890-94



Leopard Skin
Cream – 891-49



Tossed Tigers & Leopards
Green – 892-64



Tiger Skin
Tan – 893-49



Tossed Birds & Sloth
Green – 894-64



Border Stripe
Multi – 895-64



10" x 10" Blocks 24" x 44"
Multi – 896-64

Select Fabrics from Twinkle Basics, Modern Melody Basics & Folio Basics



Twinkle Basics
Cream
135-40



Twinkle Basics
Golden Yellow
135-43



Modern Melody Basics
Black
1063-99



Folio Basics
Off-White
7755-04

Materials

2/3 yard (0.61 m)	10" x 10" Blocks 24" x 44" - Multi (A)	896-64
1/3 yard (0.31 m)	Tossed Jungle Animals - Charcoal (B)	890-94
2/3 yard (0.61 m)	Twinkle Basics - Golden Yellow (C)	135-43
3/8 yard (0.35 m)	Twinkle Basics - Cream (D)	135-40
1 yard (0.92 m)	Border Stripe - Multi (E)	895-64
1/4 yard (0.23 m)	Tossed Elephants & Hippos - Charcoal (F)	888-99
1/4 yard (0.23 m)	Tossed Birds & Sloth - Green (G)	894-64
1 3/4 yards (1.61 m)	Tossed Faces - Cream (H)	887-46
1/2 yard (0.46 m)	Tiger Skin - Tan (I)	893-49*
3 1/4 yards (2.98 m)	Diagonal Plaid - Multi (Backing)	886-64

*Includes binding

Cutting Instructions

Please note: All strips are cut across the width of fabric (WOF) from selvage to selvage unless otherwise noted.

From the 10" x 10" Blocks 24" x 44" - Multi (A):

- Fussy cut (1) 22 1/2" x 35 1/2" rectangle, centered on (6) blocks.

From the Tossed Jungle Animals - Charcoal (B), cut:

- (2) 4" x 22 1/2" WOF strips.

From the Twinkle Basics - Golden Yellow (C), cut:

- (2) 2" x 42 1/2" WOF strips, piece as needed.
- (2) 2" x 25 1/2" WOF strips.
- (3) 2" x WOF strips. Sew the strips together end to end with diagonal seams and cut (2) 2" x 56 1/2" strips.
- (2) 2" x 39 1/2" WOF strips.

From the Twinkle Basics - Cream (D), cut:

- (4) 1 1/2" x WOF strips. Sub-cut (8) 1 1/2" x 19 1/2" strips.
- (2) 1 1/2" x WOF strips. Sub-cut (8) 1 1/2" x 9 1/2" strips.

From the Border Stripe - Multi (E), fussy cut:

- (4) 4 1/2" x 19 1/2" Length of Fabric (LOF) strips, each centered on a row of circles.
- (4) 4 1/2" x 9 1/2" LOF strips, each centered on a row of circles.

From the Tossed Elephants & Hippos - Charcoal (F), cut:

- (1) 6 1/2" x WOF strip. Sub-cut (4) 6 1/2" squares.

From the Tossed Birds & Sloth - Green (G), cut:

- (1) 6 1/2" x WOF strip. Sub-cut (4) 6 1/2" squares.

From the Tossed Faces - Cream (H), cut:

- (2) 5 1/2" x 59 1/2" LOF strips.
- From the remaining fabric, cut (2) 5 1/2" x 49 1/2" WOF strips, piece as needed.

From the Tiger Skin - Tan (I), cut:

- (6) 2 1/2" x WOF strips for the binding.

From the Diagonal Plaid - Multi (Backing), cut:

- (2) 57" x WOF strips for the backing. Sew the strips together and trim to make the 57" x 77" back.

Block Assembly

Note: The arrows in figures represent the fabric print direction. Pay attention to the fabric and unit orientations when assembling the various components. Use a 1/4" seam allowance with right sides together (RST) unless otherwise noted.

1. Sew (1) 4" x 22 1/2" Fabric B strip to the top and to the bottom of the 22 1/2" x 35 1/2" Fabric A rectangle to make (1) Unit 1 rectangle (Fig. 1).
2. Sew (1) 2" x 42 1/2" Fabric C strip to each side of the Unit 1 rectangle. Sew (1) 2" x 25 1/2" Fabric C strip to the top and to the bottom of the Unit 1 rectangle to make the Center Block (Fig. 2). **Trim the block to measure 24 1/2" x 44 1/2"**.

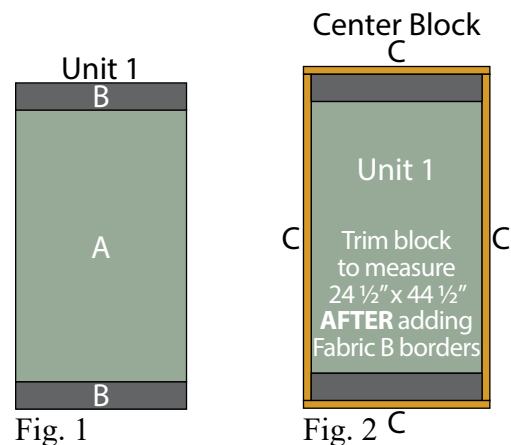


Fig. 1

Fig. 2 C

3. Sew (1) 1 1/2" x 19 1/2" Fabric D strip to the top and to the bottom of (1) 4 1/2" x 19 1/2" Fabric E strip lengthwise to make (1) Unit 2 strip (Fig. 3). Repeat to make (4) Unit 2 strips total.

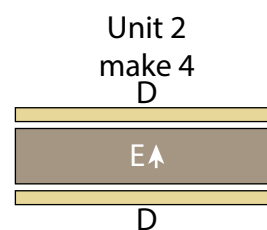


Fig. 3

4. Sew (1) 1 1/2" x 9 1/2" Fabric D strip to the top and to the bottom of (1) 4 1/2" x 9 1/2" Fabric E strip lengthwise to make (1) Unit 3 strip (Fig. 4). Repeat to make (4) Unit 3 strips total.

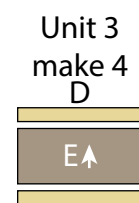


Fig. 4

5. Sew (1) Unit 2 strip to the top and to the bottom of (1) 6 ½” Fabric F square to make the Left Side Border (Fig. 5).

Left Side Border

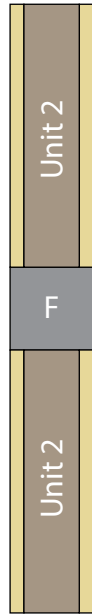


Fig. 5

6. Sew (1) Unit 2 strip to the top and to the bottom of (1) 6 ½” Fabric F square to make the Right Side Border (Fig. 6).

Right Side Border

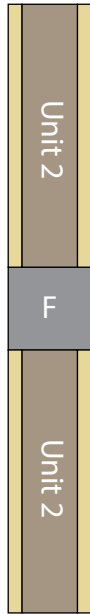


Fig. 6

7. Sew together (1) 6 ½” Fabric G square, (1) Unit 3 strip, (1) 6 ½” Fabric F square, (1) Unit 3 strip and (1) 6 ½” Fabric G square, in that order from left to right, to make the Top Border (Fig. 7).

Top Border

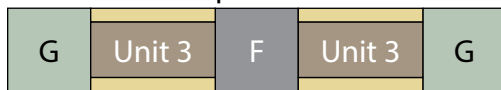


Fig. 7

8. Repeat Step 7 and refer to Figure 8 for component identification, placement and orientation to make the Bottom Border.

Bottom Border



Fig. 8

Quilt Top Assembly

(Follow the Quilt Layout while assembling the quilt top.)

9. Sew the Left Side Border and Right Side Border to the left and to the right sides of the Center Block.

10. Sew the Top Border and the Bottom Border to the top and to the bottom of the Center Block.

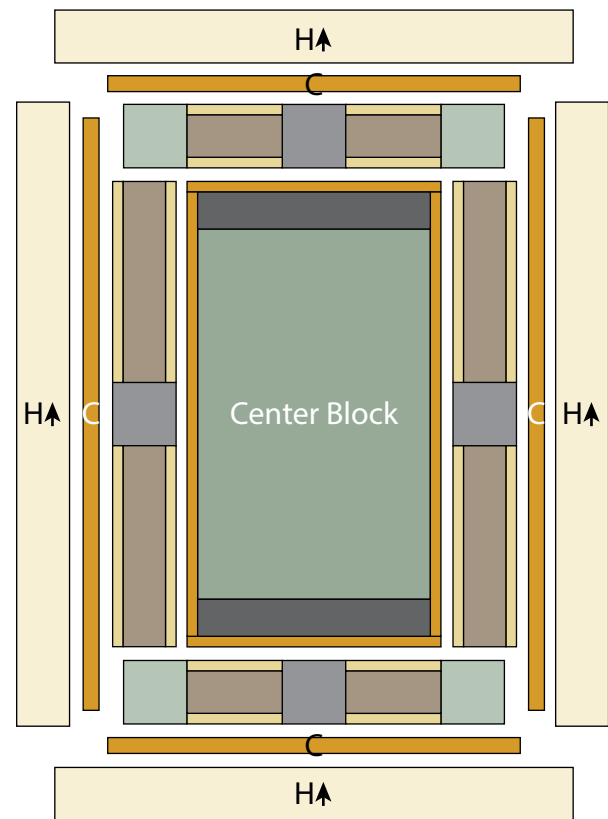
11. Sew (1) 2” x 56 ½” Fabric C strip to each side of the Center Block. Sew (1) 2” x 39 ½” Fabric C strip to the top and to the bottom of the Center Block.

12. Sew (1) 5 ½” x 59 ½” Fabric H strip to each side of the Center Block. Sew (1) 5 ½” x 49 ½” Fabric H strip to the top and to the bottom of the Center Block to make the quilt top.

13. Layer and quilt as desired.

14. Sew the (6) 2 ½” x WOF Fabric I strips together, end to end with 45-degree seams, to make the binding. Fold this long strip in half lengthwise with wrong sides together and press.

15. Bind as desired.



Quilt Layout

Every effort has been made to ensure that all projects are error free. All the information is presented in good faith, however no warranty can be given nor results guaranteed as we have no control over the execution of instructions. Therefore, we assume no responsibility for the use of this information or damages that may occur as a result. When errors are brought to our attention, we make every effort to correct and post a revision as soon as possible. Please make sure to check www.henryglassfabrics.net for pattern updates prior to starting the project. We also recommend that you test the project prior to cutting for kits. Finally, all free projects are intended to remain free to you and are not for resale.