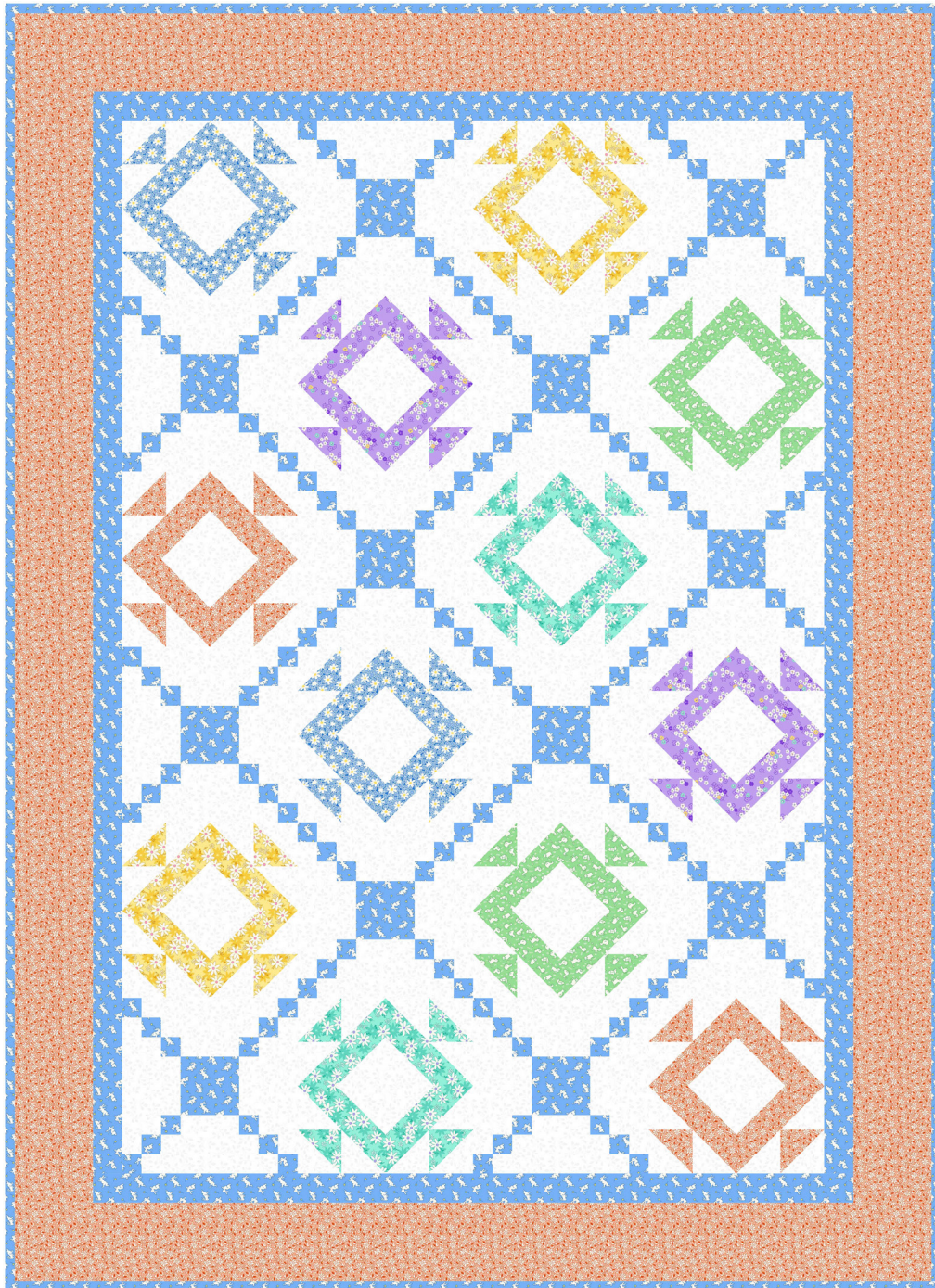


Nana Mae 8

by Henry Glass



Quilt size: 48" x 66" (1.22m x 1.68m)

Skill Level: Beginner

Hop Across Quilt

Designed and sold by Hop Across Quilt

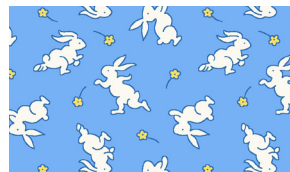
www.boundtobequilting.com

Hop Across Quilt Ordering Guide

SKU	Yards	Meters	6 Kits	12 Kits
1489-11	1/4 yds	0.23m	1 bolt	1 bolt
1491-11*	1 1/4 yds	1.14m	1 bolt	2 bolts
1493-44	1/4 yds	0.23m	1 bolt	1 bolt
1493-60	1/4 yds	0.23m	1 bolt	1 bolt
1494-66	1/4 yds	0.23m	1 bolt	1 bolt
1496-33	1 yd	0.91m	1 bolt	1 bolt
1498-55	1/4 yds	0.23m	1 bolt	1 bolt
7755-01W	1 3/4 yds	1.60m	1 bolt	2 bolts
Backing Fabric Option				
1498-66	3 1/4 yds	2.97m	2 bolts	3 bolts
* Indicates binding fabric. FQ = 18" x 22" (0.45m x 0.55m) All fabric quantities are based on 15yd bolts unless otherwise indicated.				



1489-11
Packed Daisy
Blue



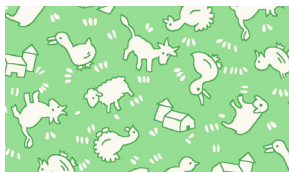
1491-11*
Bunnies
Blue



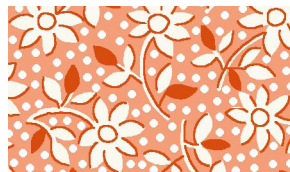
1493-44
Large Daisy
Yellow



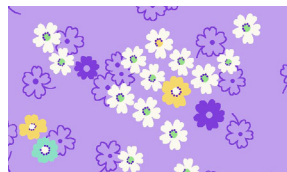
1493-60
Large Daisy
Aqua



1494-66
Farm Animals
Green



1496-33
Monotone Floral
Peach



1498-55
Spaced Floral
Purple



7755-01W
Folio Basics
White