

# Home for the Holidays

• A Free Project Sheet •  
• NOT FOR RESALE •

QUILT 1



Featuring fabrics from the **Home for the Holidays** collection by **Jennifer Van Pelt** for **STUDIO·e·fabrics**

## Fabric Requirements

- (A) 5173-84 ..... 2/3 yard
- (B) 1351-Red Delicious\*\* 3/4 yard
- (C) 5180-40 ..... 1 yard
- (D) 5182-84 ..... 1/2 yard
- (E) 5178-84 ..... 3/4 yard
- (F) 5176-84 ..... 3/4 yard
- (G) 1351-Cream\*\*... 5/8 yard
- (H) 5177-84 ..... 2 1/3 yards

- (I) 5175-84 ..... 5/8 yard\*
- (J) 5174-48 ..... 2/3 yard
- Backing
- 5174-48 ..... 5 yards

\* Includes Binding  
\*\* Just Color! Collection

## Additional Supplies Needed

- Batting 69" x 85" (Recommended:  
Air Lite® Colour Me 100% Cotton)
- Piecing and sewing thread
- Quilting and sewing supplies

Quilt designed by Heidi Pridemore  
Finished Quilt Size 61" x 77"  
Skill Level: Advanced Beginner

Please check our website for pattern updates before starting this project.



## Fabrics in the Collection



Large Blocks - Red  
5173-84



Town Scenery - Cream  
5174-48



Diagonal Stripe - Red  
5175-84



Holiday Honeycomb - Red  
5176-84



Border Stripe - Red  
5177-84



Tossed Holly Berries - Cream  
5178-48



Tossed Holly Berries - Red  
5178-84



Tossed Villagers - Cream  
5179-48



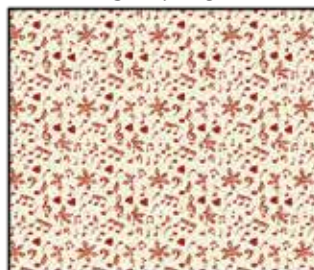
Tossed Snowflakes - Cream  
5180-40



Tossed Snowmen - Red  
5181-84



Set Snowflakes - Red  
5182-84



Musical Notes - Cream  
5183-48

Select Fabrics from  
Just Color!



Cream  
1351-Cream



Red Delicious  
1351-Red Delicious

## Cutting

### Cutting Instructions

*Please note: All strips are cut across the width of fabric (WOF) from selvage to selvage edge unless otherwise noted.*

WOF= Width of Fabric • LOF = Length of Fabric

#### **Fabric A (5173-84 Large Blocks – Red):**

- Fussy cut (6) 9" squares each centered on a block.

#### **Fabric B (1351 Red Delicious Just Color! – Red Delicious), cut:**

- (3) 2" x WOF strips, sub-cut (12) 2" x 9" strips.
- (4) 2" x WOF strips, sub-cut (12) 2" x 12" strips.
- (3) 1 ¼" x WOF strips, sub-cut (12) 1 ¼" x 9" strips.
- (3) 1 ¼" x WOF strips, sub-cut (12) 1 ¼" x 10 ½" strips.

#### **Fabric C (5180-40 Tossed Snowflakes – Cream), cut:**

- (6) 1 ½" x WOF strips, sub-cut (24) 1 ½" x 10 ½" strips.
- (8) 1 ½" x WOF strips, sub-cut (24) 1 ½" x 12 ½" strips.
- (3) 2 ⅞" x WOF strips, sub-cut (34) 2 ⅞" squares. Cut the squares across (1) diagonal to make (68) 2 ⅞" triangles.

#### **Fabric D (5182-84 Set Snowflakes – Red), cut:**

- (3) 4 ⅞" x WOF strips, sub-cut (17) 4 ⅞" squares. Cut the squares across (1) diagonal to make (34) 4 ⅞" triangles.

#### **Fabric E (5178-84 Tossed Holly Berries – Red), cut:**

- (3) 2 ½" x WOF strips, sub-cut (34) 2 ½" squares.
- (3) 2" x WOF strips. Sew the strips together end to end with diagonal seams and cut (2) 2" x 60 ½" strips.
- (3) 2" x WOF strips. Sew the strips together end to end with diagonal seams and cut (2) 2" x 47 ½" strips.

#### **Fabric F (5176-84 Holiday Honeycomb – Red):**

- Fussy cut (23) 4 ½" squares each centered on a hexagon.

#### **Fabric G (1351-Cream Just Color! – Cream), cut:**

- (4) 2 ½" x WOF strips. Sew the strips together end to end with diagonal seams and cut (2) 2 ½" x 63 ½" strips.
- (3) 2 ½" x WOF strips. Sew the strips together end to end with diagonal seams and cut (2) 2 ½" x 51 ½" strips.

#### **Fabric H (5177-84 Border Stripe – Red), cut:**

- (2) 5 ½" x 81" LOF strips.
- (2) 5 ½" x 65" LOF strips.

#### **Fabric I (5175-84 Diagonal Stripe – Red), cut:**

- (7) 2 ½" x WOF strips for the binding.

#### **Fabric J (5174-48 Town Scenery – Cream), cut:**

- (2) 9" x WOF strips, sub-cut (6) 9" squares.

#### **Backing (5174-48 Town Scenery – Cream), cut:**

- (2) 85" x WOF strips. Sew the strips together and trim to 69" x 85" to make the back.

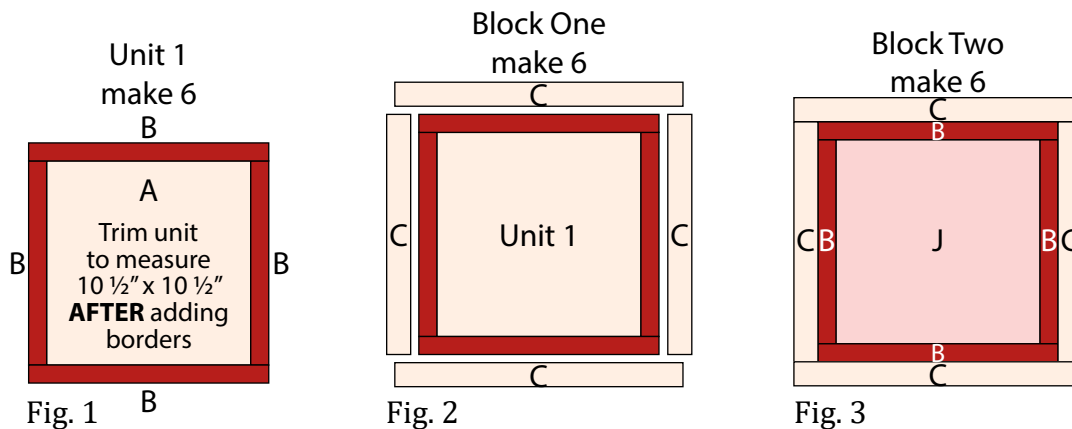
## Sewing

Sew using a  $\frac{1}{4}$ " seam allowance with right sides together (RST) unless otherwise indicated. Always press towards the darker fabric while assembling, unless otherwise noted.

### Block Assembly

**Note: The arrows in figures represent the fabric print direction. Pay attention to the fabric and unit orientations while assembling the various components.**

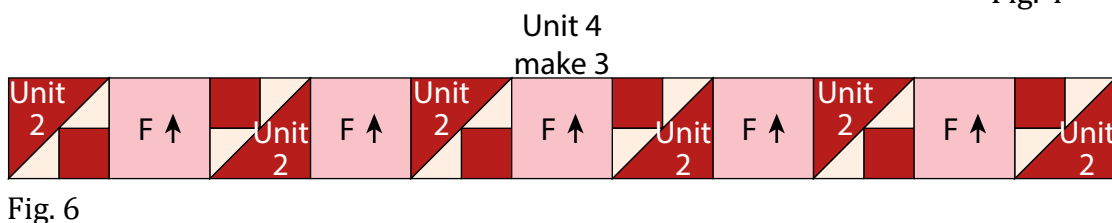
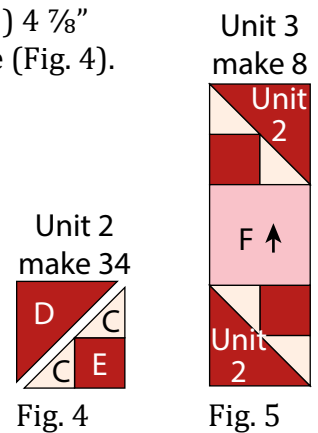
1. Sew (1) 2" x 9" Fabric B strip to each side of (1) 9" Fabric A block. Sew (1) 2" x 12" Fabric B strip to the top and to the bottom of the Fabric A block. Trim the block to measure 10  $\frac{1}{2}$ " square to make (1) Unit 1 square (Fig. 1). Repeat to make (6) Unit 1 squares total.
2. Sew (1) 1  $\frac{1}{2}$ " x 10  $\frac{1}{2}$ " Fabric C strip to each side of (1) Unit 1 square. Sew (1) 1  $\frac{1}{2}$ " x 12  $\frac{1}{2}$ " Fabric C strip to the top and to the bottom of the Unit 1 square to make (1) Block One square (Fig. 2). Repeat to make (6) Block One squares total.
3. Sew (1) 1  $\frac{1}{4}$ " x 9" Fabric B strip to each side of (1) 9" Fabric J square. Sew (1) 1  $\frac{1}{4}$ " x 10  $\frac{1}{2}$ " Fabric B strip to the top and to the bottom of the Fabric J square. Sew (1) 1  $\frac{1}{2}$ " x 10  $\frac{1}{2}$ " Fabric C strip to each side of the newly sewn block. Sew (1) 1  $\frac{1}{2}$ " x 12  $\frac{1}{2}$ " Fabric C strip to the top and to the bottom of the block to make (1) Block Two square (Fig. 3). Repeat to make (6) Block Two squares total.



4. Sew (1) 2  $\frac{7}{8}$ " Fabric C triangle to adjacent sides of (1) 2  $\frac{1}{2}$ " Fabric E square. Sew (1) 4  $\frac{7}{8}$ " Fabric D triangle to the long side of the newly sewn triangle to make (1) Unit 2 square (Fig. 4). The unit should measure 4  $\frac{1}{2}$ " square. Repeat to make (34) Unit 2 squares total.

5. Sew (1) Unit 2 square to the top and to the bottom of (1) 4  $\frac{1}{2}$ " Fabric F square to make (1) Unit 3 strip (Fig. 5). Repeat to make (8) Unit 3 strips total.

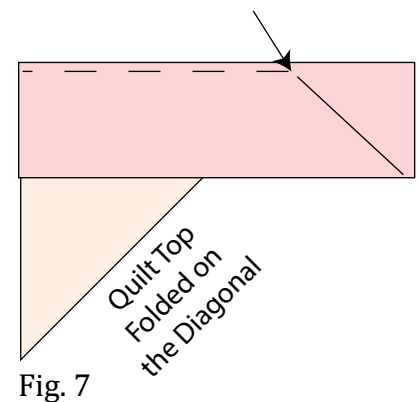
6. Sew together (6) Unit 2 squares and (5) 4  $\frac{1}{2}$ " Fabric F squares, alternating them, to make (1) Unit 4 strip (Fig. 6). Repeat to make (3) Unit 4 strips total.



## Quilt Top Assembly

*(Follow the Quilt Layout while assembling the quilt top.)*

7. Sew (1) Unit 3 strip to each side of (1) Block Two square. Sew (1) Block One square to each side of the newly sewn strip to make Row One. Repeat to make Row Three.
8. Sew (1) Unit 3 strip to each side of (1) Block One square. Sew (1) Block Two square to each side of the newly sewn strip to make Row Two. Repeat to make Row Four.
9. Sew together the (4) pieced rows, in numerical order, and the (3) Unit 4 strips, lengthwise and alternating them, to make the Center Block.
10. Sew (1) 2" x 60 ½" Fabric E strip to each side of the Center Block. Sew (1) 2" x 47 ½" Fabric E strip to the top and to the bottom of the Center Block.
11. Sew (1) 2 ½" x 63 ½" Fabric G strip to each side of the Center Block. Sew (1) 2 ½" x 51 ½" Fabric G strip to the top and to the bottom of the Center Block.
12. Center (1) 5 ½" x 81" Fabric H strip on (1) side of the Center Block and pin in place. Start sewing the strip a ¼" from the top edge of the block and stop a ¼" from the bottom edge. **DO NOT TRIM THE EXCESS.** Repeat with the opposite side.
13. Repeat Step 12 to sew (1) 5 ½" x 65" Fabric H strip to the top and to the bottom of the Center Block, making sure to stop and start ¼" away from each end of the block. To miter each corner, fold the Center Block on a diagonal, wrong side together. This should line up the strips from adjacent sides (Fig. 7).
14. Starting at the sewn seam (represented by the arrow in Figure 7), draw a 45-degree line to the edge of the fabric. Sew on the drawn line. Trim the excess fabric leaving a ¼" seam. Repeat this step with the remaining corners to make the quilt top.

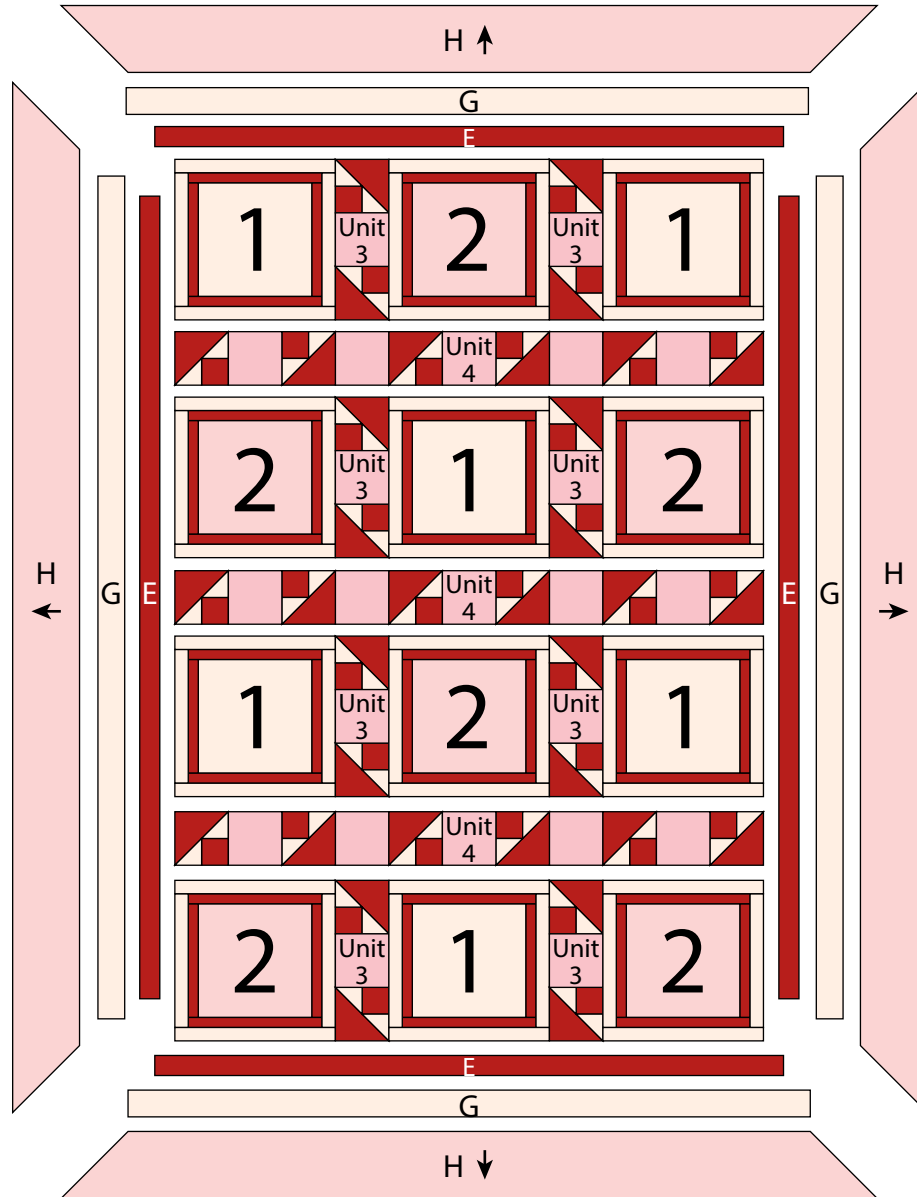


## Layering, Quilting and Finishing

15. Press the quilt top and 69" x 85" backing well. Layer backing (wrong side up), batting, pressed quilt top (right side up) and baste. Quilt as desired and trim excess batting and backing when quilting is complete.

## Binding

16. Cut the ends of the (7) Fabric I binding strips at a 45-degree angle and sew end to end to make (1) continuous piece of binding. Fold in half lengthwise and press wrong sides together.
17. Sew the binding to the front of the quilt, raw edges together. Turn the folded edge to the back, and hand stitch in place.



Quilt Layout

Every effort has been made to ensure that all projects are error free. All the information is presented in good faith, however no warranty can be given nor results guaranteed as we have no control over the execution of instructions. Therefore, we assume no responsibility for the use of this information or damages that may occur as a result. When errors are brought to our attention, we make every effort to correct and post a revision as soon as possible. Please make sure to check [www.studioefabrics.net](http://www.studioefabrics.net) for pattern updates prior to starting the project. We also recommend that you test the project prior to cutting for kits. Finally, all free projects are intended to remain free to you and are **not for resale**.