

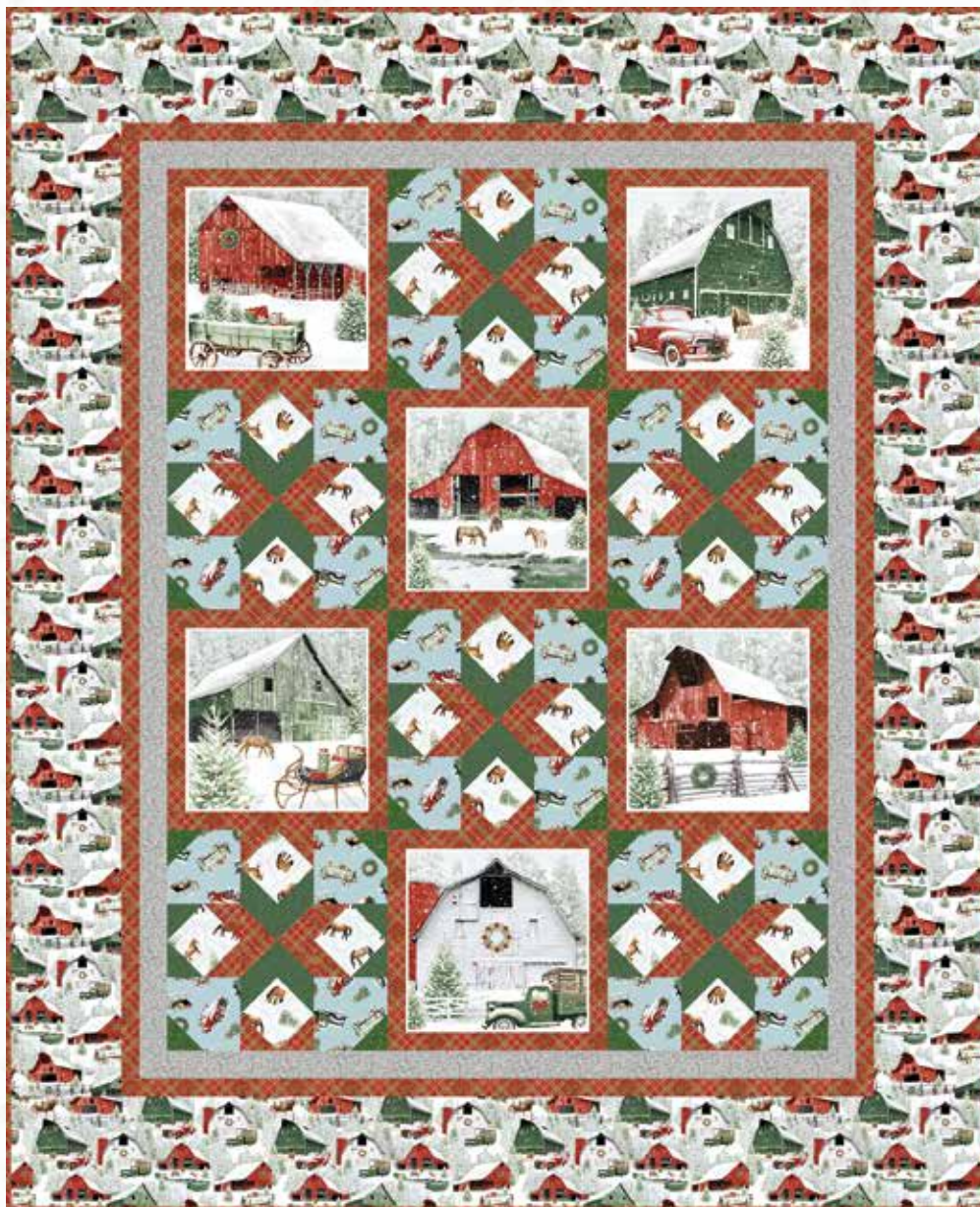
# HOLIDAY SPIRIT

jan shade beach

• A Free Project Sheet •  
• NOT FOR RESALE •

*By Jan Shade Beach*

Quilt Design by Heidi Pridemore



Quilt 2

Skill Level: Advanced Beginner



Henry Glass & Co., Inc.



facebook

Finished Quilt Size: 53" x 65"  
49 West 37th Street, New York, NY 10018  
tel: 212-686-5194 fax: 212-532-3525  
Toll Free: 800-294-9495  
[www.henryglassfabrics.net](http://www.henryglassfabrics.net)  
Please check our website for pattern updates before starting this project.



# HOLIDAY SPIRIT

Quilt 2

Finished Quilt Size: 53" x 65"

## Fabrics in the Collection



Barn Blocks  
Multi – 712-86



Barn Scenic  
Multi – 711-86



Tossed Trucks, Sleds and Wagons  
Light Blue – 713-11



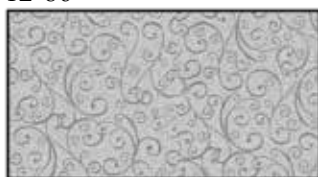
Horse Allover  
Gray – 714-90



Swirl  
Green – 715-66



Swirl  
Red – 715-88



Swirl  
Gray – 715-90



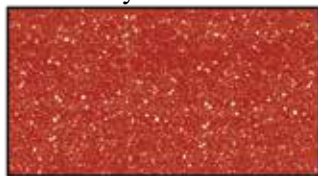
Small Plaid  
Red – 716-86



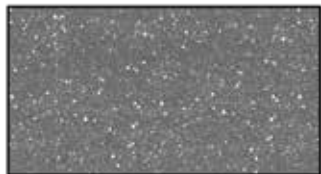
Large Plaid  
Multi – 717-86



Snow  
Green – 718-66



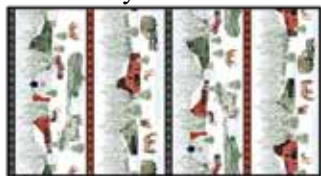
Snow  
Red – 718-88



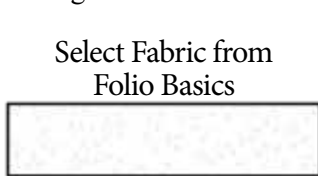
Snow  
Gray – 718-90



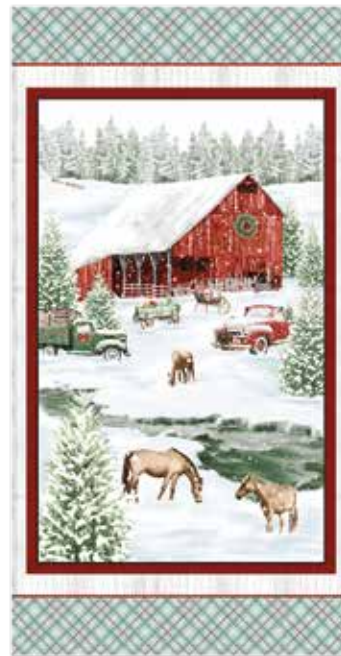
Tree Snowflake  
Light Blue – 719-61



Novelty Farm Scenic Stripe  
Multi – 720-86



Select Fabric from  
Folio Basics  
White on White  
7755-01



24 Inch Farm Scenic Panel  
Multi – 721P-86

# HOLIDAY SPIRIT

## Quilt 2

## Page 3

### Materials

$\frac{2}{3}$ yard	Barn Blocks - Multi (A)	712-86
1 $\frac{1}{2}$ yards	Small Plaid - Red (B)	716-86*
$\frac{1}{2}$ yard	Swirl - Green (C)	715-66
$\frac{1}{2}$ yard	Horse Allover - Gray (D)	714-90
$\frac{1}{2}$ yard	Tossed Trucks, Sleds, and Wagons - Light Blue (E)	713-11
$\frac{1}{4}$ yard	Snow - Green (F)	718-66
$\frac{3}{8}$ yard	Swirl - Gray (G)	715-90
1 $\frac{5}{8}$ yards	Barn Scenic - Multi (H)	711-86
3 $\frac{1}{2}$ yards	Tree Snowflake - Light Blue (Backing)	719-61

\*Includes binding

### Cutting Instructions

*Please note: All strips are cut across the width of fabric (WOF) from selvage to selvage unless otherwise noted.*

#### From the Barn Blocks - Multi (A),

- Fussy cut (6) 10  $\frac{1}{2}$ " squares, each centered on a block.

#### From the Small Plaid - Red (B), cut:

- (1) 5  $\frac{1}{4}$ " x WOF strip. Sub-cut (3) 5  $\frac{1}{4}$ " squares. Cut the squares across both diagonals to make (12) 5  $\frac{1}{4}$ " triangles.
- (3) 2  $\frac{1}{2}$ " x WOF strips. Sub-cut (48) 2  $\frac{1}{2}$ " squares.
- (3) 2" x WOF strips. Sub-cut (12) 2" x 10  $\frac{1}{2}$ " strips.
- (4) 2" x WOF strips. Sub-cut (12) 2" x 13  $\frac{1}{2}$ " strips.
- (3) 1  $\frac{1}{2}$ " x WOF strips. Sew the strips together end to end with diagonal seams and cut (2) 1  $\frac{1}{2}$ " x 51  $\frac{1}{2}$ " strips.
- (2) 1  $\frac{1}{2}$ " x 41  $\frac{1}{2}$ " WOF strips.
- (6) 2  $\frac{1}{2}$ " x WOF strips for the binding.

#### From the Swirl - Green (C), cut:

- (1) 5  $\frac{1}{4}$ " x WOF strip. Sub-cut (3) 5  $\frac{1}{4}$ " squares. Cut the squares across both diagonals to make (12) 5  $\frac{1}{4}$ " triangles.
- (3) 2  $\frac{1}{2}$ " x WOF strips. Sub-cut (48) 2  $\frac{1}{2}$ " squares.

#### From the Horse Allover - Gray (D), cut:

- (3) 4  $\frac{1}{2}$ " x WOF strips. Sub-cut (24) 4  $\frac{1}{2}$ " squares.

#### From the Tossed Trucks, Sleds, and Wagons - Light Blue (E), cut:

- (3) 4  $\frac{1}{2}$ " x WOF strips. Sub-cut (24) 4  $\frac{1}{2}$ " squares.

#### From the Snow - Green (F), cut:

- (2) 2  $\frac{1}{2}$ " x WOF strips. Sub-cut (24) 2  $\frac{1}{2}$ " squares.

#### From the Swirl - Gray (G), cut:

- (3) 2" x WOF strips. Sew the strips together end to end with diagonal seams and cut (2) 2" x 48  $\frac{1}{2}$ " strips.
- (2) 2" x 39  $\frac{1}{2}$ " WOF strips.

#### From the Barn Scenic - Multi (H), cut:

- (2) 6  $\frac{1}{2}$ " x 53  $\frac{1}{2}$ " Length of Fabric (LOF) strips.
- From the remaining fabric, cut (2) 6  $\frac{1}{2}$ " x 53  $\frac{1}{2}$ " WOF strips, piece as needed.

#### From the Tree Snowflake - Light Blue (Backing), cut:

- (2) 61" x WOF strips for the backing. Sew the strips together and trim to make the 61" x 73" back.

### Block Assembly

*Note: The arrows in figures represent the fabric print direction. Pay attention to the fabric and unit orientations when assembling the various components. Use a  $\frac{1}{4}$ " seam allowance with right sides together (RST) unless otherwise noted.*

- Sew (1) 2" x 10  $\frac{1}{2}$ " Fabric B strip to each side of (1) 10  $\frac{1}{2}$ " Fabric A square. Sew (1) 2" x 13  $\frac{1}{2}$ " Fabric B strip to the top and to the bottom of the Fabric A square to make (1) Block One square (Fig. 1). **Trim the block to measure 12  $\frac{1}{2}$ " x 12  $\frac{1}{2}$ ".** Repeat to make (6) Block One squares total.

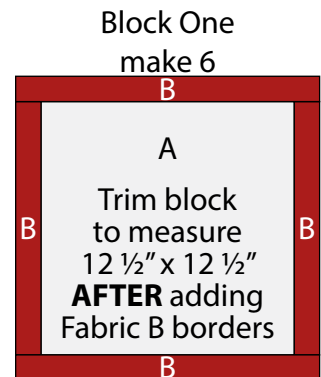


Fig. 1

- Sew together (2) 5  $\frac{1}{4}$ " Fabric B triangles and (2) 5  $\frac{1}{4}$ " Fabric C triangles to make (1) 4  $\frac{1}{2}$ " Unit 1 square (Fig. 2). Repeat to make (6) Unit 1 squares total.

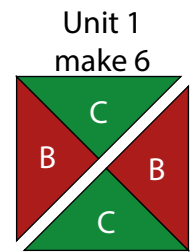


Fig. 2

- Place (1) 2  $\frac{1}{2}$ " Fabric F square on the top left corner of (1) 4  $\frac{1}{2}$ " Fabric E square, right sides together (Fig. 3). Sew across the diagonal of the smaller square from the upper right corner to the lower left corner (Fig. 3). Flip open the triangle formed and press. Trim away the excess fabric from behind the triangle  $\frac{1}{4}$ " away from the sewn seam to make (1) Unit 2 square (Fig. 4). Repeat to make (24) Unit 2 squares total.

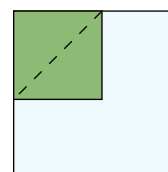


Fig. 3

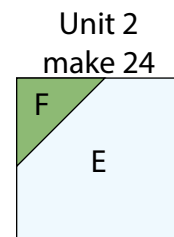


Fig. 4

# HOLIDAY SPIRIT

## Quilt 2

## Page 4

4. Place (1) 2 ½" Fabric B square on the top left corner of (1) 4 ½" Fabric D square, right sides together (Fig. 5). Sew across the diagonal of the smaller square from the upper right corner to the lower left corner (Fig. 5). Flip open the triangle formed and press. Trim away the excess fabric from behind the triangle ¼" away from the sewn seam (Fig. 6).

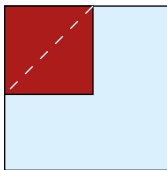


Fig. 5

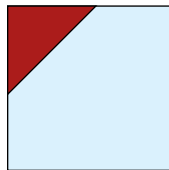


Fig. 6

5. Follow Figure 7 for the seam direction to add a 2 ½" Fabric B square to the upper right corner and 2 ½" Fabric C squares to the lower left and lower right corners of the 4 ½" Fabric D square to make (1) Unit 3 square (Fig. 8).

6. Repeat Steps 4-5 to make (24) Unit 3 squares total.

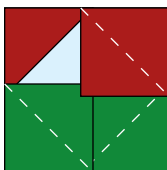


Fig. 7

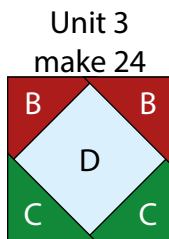


Fig. 8

7. Sew (1) Unit 2 square to each side of (1) Unit 3 square to make the top row. Repeat to make the bottom row. Sew (1) Unit 3 square to each side of (1) Unit 1 square to make the middle row. Sew together the (3) rows lengthwise to make (1) 12 ½" Block Two square (Fig. 9). Repeat to make (6) Block Two squares total.

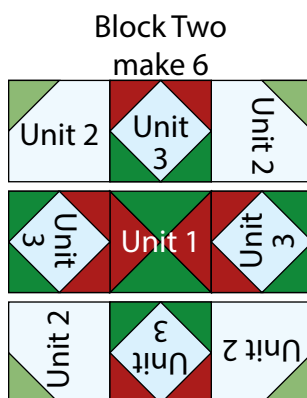


Fig. 9

8. Sew (1) Block One square to each side of (1) Block Two square to make Row One (Fig. 10). Repeat to make Row Three.

9. Sew (1) Block Two square to each side of (1) Block One square to make Row Two (Fig. 10). Repeat to make Row Four.

10. Sew together the (4) Rows from Steps 8-9, lengthwise and in numerical order from the top to the bottom, to make 36 ½" x 48 ½" Center Block.

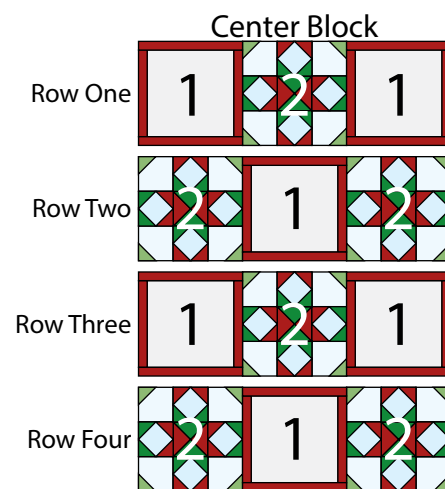


Fig. 10

### Quilt Top Assembly

*(Follow the Quilt Layout while assembling the quilt top.)*

11. Sew (1) 2" x 48 ½" Fabric G strip to each side of the Center Block. Sew (1) 2" x 39 ½" Fabric G strip to the top and to the bottom of the Center Block.

12. Sew (1) 1 ½" x 51 ½" Fabric B strip to each side of the Center Block. Sew (1) 1 ½" x 41 ½" Fabric B strip to the top and to the bottom of the Center Block.

13. Sew (1) 6 ½" x 53 ½" Fabric H LOF strip to each side of the Center Block. Sew (1) 6 ½" x 53 ½" Fabric H WOF strip to the top and to the bottom of the Center Block to make the quilt top.

14. Layer and quilt as desired.

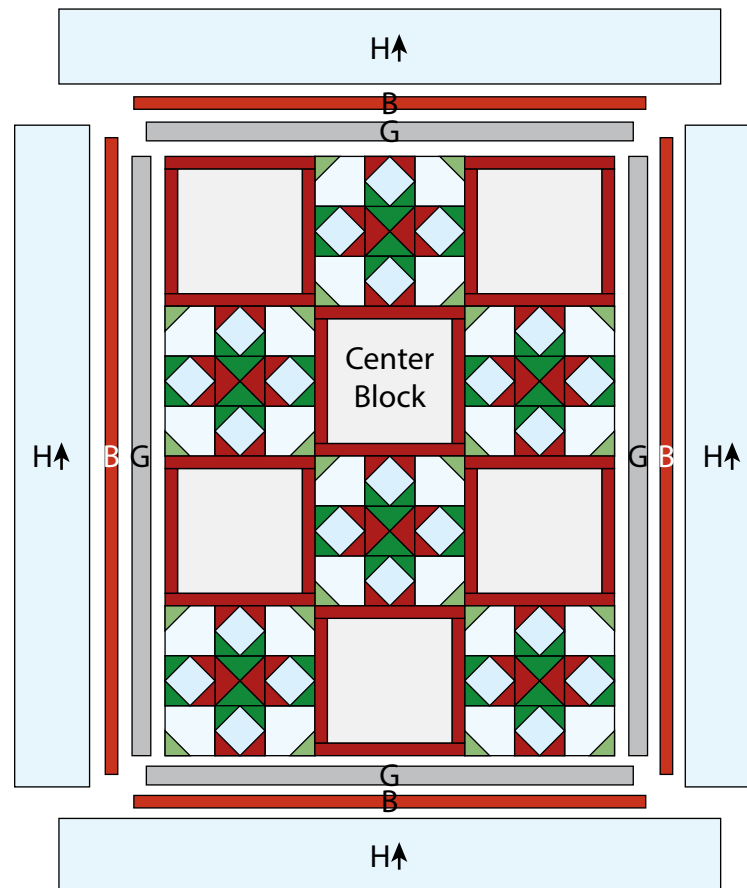
15. Sew the (6) 2 ½" x WOF Fabric B strips together, end to end with 45-degree seams, to make the binding. Fold this long strip in half lengthwise with wrong sides together and press.

16. Bind as desired.

# HOLIDAY SPIRIT

Quilt 2

Page 5



Quilt Layout

Every effort has been made to ensure that all projects are error free. All the information is presented in good faith, however no warranty can be given nor results guaranteed as we have no control over the execution of instructions. Therefore, we assume no responsibility for the use of this information or damages that may occur as a result. When errors are brought to our attention, we make every effort to correct and post a revision as soon as possible. Please make sure to check [www.henryglassfabrics.net](http://www.henryglassfabrics.net) for pattern updates prior to starting the project. We also recommend that you test the project prior to cutting for kits. Finally, all free projects are intended to remain free to you and are **not for resale**.

©2022 Henry Glass & Co., Inc.