

Gnome & Garden

• A Free Project Sheet •
• NOT FOR RESALE •

By Hannah West



Quilt Design by Heidi Pridemore

Quilt 1

Skill Level: Intermediate



Henry Glass & Co., Inc.



facebook

Finished Quilt Size: 61" x 61"
(154.94 cm x 154.94 cm)

49 West 37th Street, New York, NY 10018

tel: 212-686-5194 fax: 212-532-3525

Toll Free: 800-294-9495

www.henryglassfabrics.net

Please check our website for pattern updates before starting this project.

GNOME & GARDEN

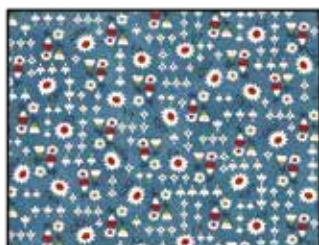
Quilt 1

Finished Quilt Size: 61" x 61"
(154.94 cm x 154.94 cm)

Fabrics in the Collection



Gnomes
Cream – 1008-33



Daisy Floral
Blue – 1009-77



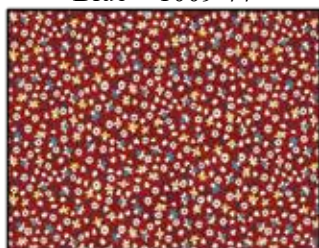
Mushrooms
Cream/Red – 1010-88



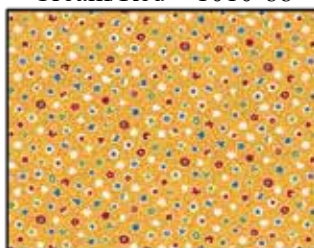
Lattice
Cream/Red – 1011-88



Spaced Ditsy
Cream/Red – 1012-38



Packed Ditsy
Red – 1013-88



Tiny Tulips
Yellow – 1014-44



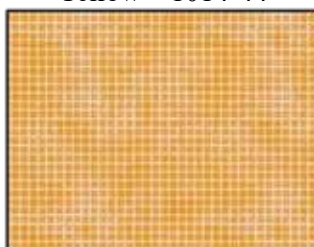
Floral on Wonky Grid
Red/Green – 1015-86



Dot
Blue – 1016-77



Dot
Red – 1016-88



Root Grid
Yellow – 1017-44



Root Grid
Green – 1017-66



Gnome Stripe
Cream – 1018-33

Select Fabric from
Modern Melody Basics



Cream
1063-40



36 inch Panel
Green – 1019P-66

Materials

1 panel	36 inch Panel - Green (A)	1019P-66
$\frac{3}{8}$ yard (0.35 m)	Root Grid - Yellow (B)	1017-44
$\frac{1}{3}$ yard (0.31 m)	Dot - Blue (C)	1016-77
$\frac{1}{2}$ yard (0.46 m)	Root Grid - Green (D)	1017-66
$\frac{1}{2}$ yard (0.46 m)	Modern Melody Basics - Cream (E)	1063-40
$\frac{1}{4}$ yard (0.23 m)	Mushrooms - Cream/Red (F)	1010-88
$\frac{1}{2}$ yard (0.46 m)	Daisy Floral - Blue (G)	1009-77
$\frac{1}{2}$ yard (0.46 m)	Lattice - Cream/Red (H)	1011-88
2 yards (1.83 m)	Gnome Stripe - Cream (I)	1018-33
$\frac{5}{8}$ yard (0.58 m)	Dot - Red (J)	1016-88*
4 yards (3.66 m)	Gnomes - Cream (Backing)	1008-33

*Includes binding

Cutting Instructions

Please note: All strips are cut across the width of fabric (WOF) from selvage to selvage edge unless otherwise noted.

From the 36 inch Panel - Green (A):

- Fussy cut (1) $34\frac{1}{2}$ " x $34\frac{1}{2}$ " square, centered on the panel.

From the Root Grid - Yellow (B), cut:

- (2) $2\frac{1}{2}$ " x $34\frac{1}{2}$ " WOF strips.
- (2) $2\frac{1}{2}$ " x $38\frac{1}{2}$ " WOF strips.

From the Dot - Blue (C), cut:

- (2) 2 " x $37\frac{1}{2}$ " WOF strips.
- (2) 2 " x $40\frac{1}{2}$ " WOF strips.

From the Root Grid - Green (D), cut:

- (2) $6\frac{1}{4}$ " x WOF strips. Sub-cut (9) $6\frac{1}{4}$ " squares. Cut the squares across both diagonals to make (36) $6\frac{1}{4}$ " triangles.

From the Modern Melody Basics - Cream (E), cut:

- (2) $6\frac{1}{4}$ " x WOF strips. Sub-cut (9) $6\frac{1}{4}$ " squares. Cut the squares across both diagonals to make (36) $6\frac{1}{4}$ " triangles.

From the Mushrooms - Cream/Red (F), cut:

- (1) $5\frac{7}{8}$ " x WOF strip. Sub-cut (6) $5\frac{7}{8}$ " squares. Cut the squares across (1) diagonal to make (12) $5\frac{7}{8}$ " triangles.

From the Daisy Floral - Blue (G), cut:

- (2) $5\frac{7}{8}$ " x WOF strips. Sub-cut (12) $5\frac{7}{8}$ " squares. Cut the squares across (1) diagonal to make (24) $5\frac{7}{8}$ " triangles.

From the Lattice - Cream/Red (H), cut:

- (3) 2 " x WOF strips. Sew the strips together end to end with diagonal seams and cut (2) 2 " x $50\frac{1}{2}$ " strips.
- (3) 2 " x WOF strips. Sew the strips together end to end with diagonal seams and cut (2) 2 " x $53\frac{1}{2}$ " strips.

From the Gnome Stripe - Cream (I), cut:

- (4) $4\frac{1}{2}$ " x 65 " Length of Fabric (LOF) strips.

From the Dot - Red (J), cut:

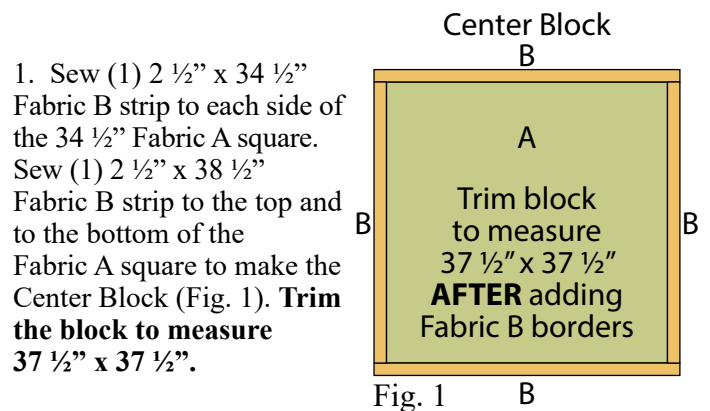
- (7) $2\frac{1}{2}$ " x WOF strips for the binding.

From the Gnomes - Cream (Backing), cut:

- (2) 69 " x WOF strips for the backing. Sew the strips together and trim to make the 69 " x 69 " back.

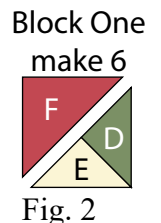
Block Assembly

Note: The arrows in figures represent the fabric print direction. Pay attention to the fabric and unit orientations when assembling the various components. Use a $\frac{1}{4}$ " seam allowance with right sides together (RST) unless otherwise noted.

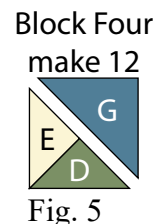
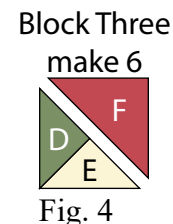
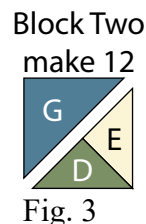


- Sew (1) $2\frac{1}{2}$ " x $34\frac{1}{2}$ " Fabric B strip to each side of the $34\frac{1}{2}$ " Fabric A square. Sew (1) $2\frac{1}{2}$ " x $38\frac{1}{2}$ " Fabric B strip to the top and to the bottom of the Fabric A square to make the Center Block (Fig. 1). **Trim the block to measure $37\frac{1}{2}$ " x $37\frac{1}{2}$ ".**

- Sew together (1) $6\frac{1}{4}$ " Fabric E triangle and (1) $6\frac{1}{4}$ " Fabric D triangle on short sides. Sew (1) $5\frac{7}{8}$ " Fabric F triangle to the long side of the newly sewn triangle to make (1) $5\frac{1}{2}$ " Block One square (Fig. 2). Repeat to make (6) Block One squares total.

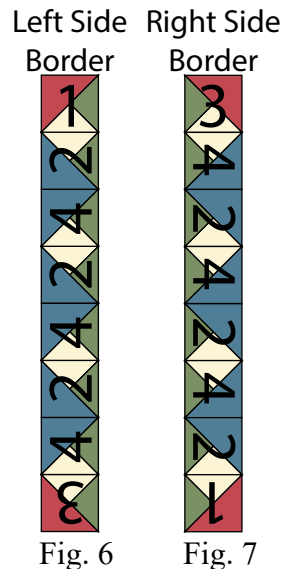


- Repeat Step 2 and refer to Figures 3-5 for fabric identification, placement and orientation to make (12) Block Two squares, (6) Block Three squares and (12) Block Four squares.



4. Refer to Figure 6 and sew together (8) assorted block squares to make the Left Side Border.

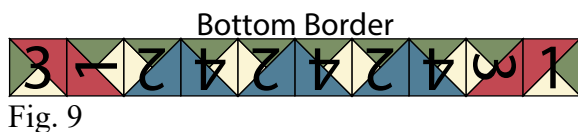
5. Refer to Figure 7 and sew together (8) assorted block squares to make the Right Side Border.



6. Refer to Figure 8 and sew together (10) assorted block squares to make the Top Border.



7. Refer to Figure 9 and sew together (10) assorted block squares to make the Bottom Border.



Quilt Top Assembly

(Follow the Quilt Layout while assembling the quilt top.)

8. Sew (1) 2" x 37 1/2" Fabric C strip to each side of the Center Block. Sew (1) 2" x 40 1/2" Fabric C strip to the top and to the bottom of the Center Block.

9. Sew the Left Side Border and the Right Side Border to the left and to the right sides of the Center Block.

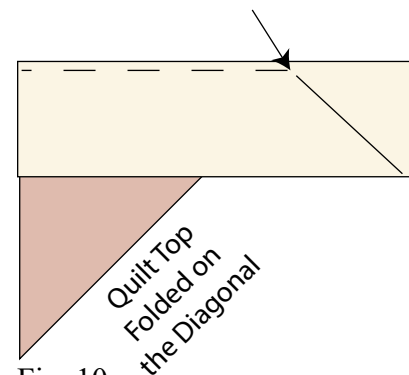
10. Sew the Top Border and Bottom Border to the top and to the bottom of the Center Block.

11. Sew (1) 2" x 50 1/2" Fabric H strip to each side of the Center Block. Sew (1) 2" x 53 1/2" Fabric H strip to the top and to the bottom of the Center Block.

12. Center (1) 4 1/2" x 65" Fabric I strip on (1) side of the Center Block and pin in place. Start sewing the strip a 1/4" from the top edge of the block and stop a 1/4" from the bottom edge. **DO NOT TRIM THE EXCESS.** Repeat with the opposite side.

13. Repeat Step 12 to sew (1) 4 1/2" x 65" Fabric I strip to the top and to the bottom of the Center Block, making sure to stop and start 1/4" away from each end of the block. To miter each corner, fold the Center Block on a diagonal, wrong side together. This should line up the strips from adjacent sides (Fig. 10).

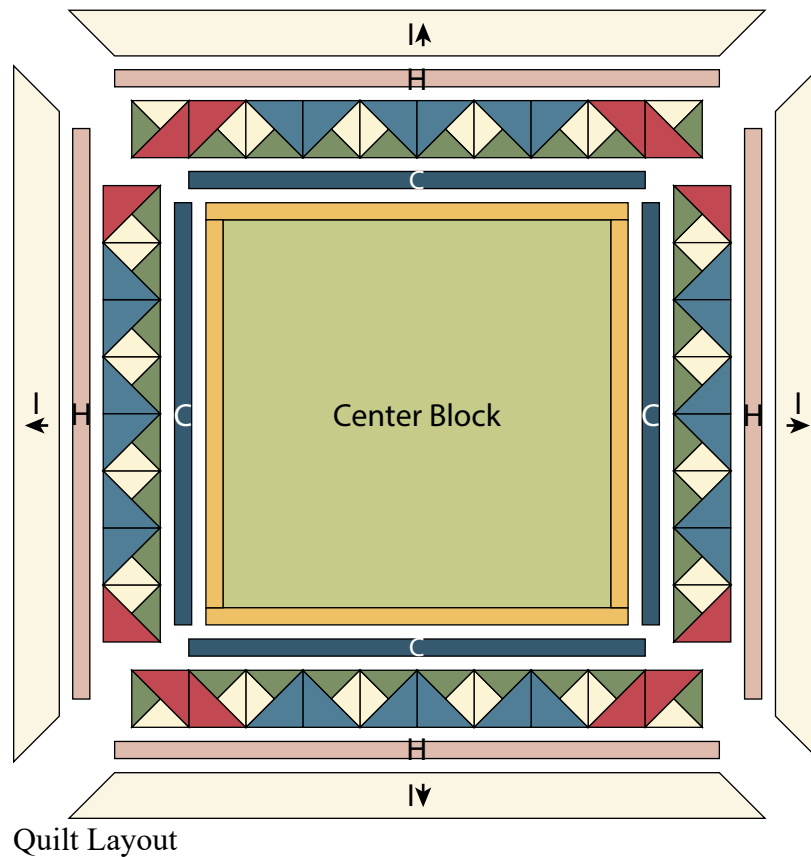
14. Starting at the sewn seam (represented by the arrow in Figure 10), draw a 45-degree line to the edge of the fabric. Sew on the drawn line. Trim the excess fabric leaving a 1/4" seam. Repeat this step with the remaining corners to make the quilt top.



15. Layer and quilt as desired.

16. Sew the (7) 2 1/2" x WOF Fabric J strips together, end to end with 45-degree seams, to make the binding. Fold this long strip in half lengthwise with wrong sides together and press.

17. Bind as desired.



Every effort has been made to ensure that all projects are error free. All the information is presented in good faith, however no warranty can be given nor results guaranteed as we have no control over the execution of instructions. Therefore, we assume no responsibility for the use of this information or damages that may occur as a result. When errors are brought to our attention, we make every effort to correct and post a revision as soon as possible. Please make sure to check www.henryglassfabrics.net for pattern updates prior to starting the project. We also recommend that you test the project prior to cutting for kits. Finally, all free projects are intended to remain free to you and are **not for resale**.