

# WILLOW HOLLOW

GEESE IN THE WILLOWS PATCHWORK QUILT

BY KIM DIEHL



Finished Quilt Size: 60½" x 60½"  
A Free Project Sheet from



Henry Glass & Co., Inc.



49 West 37th Street, New York, NY 10018  
tel: 212-686-5194 • fax: 212-532-3525  
Toll-free: 800-294-9495  
[www.henryglassfabrics.net](http://www.henryglassfabrics.net)

facebook

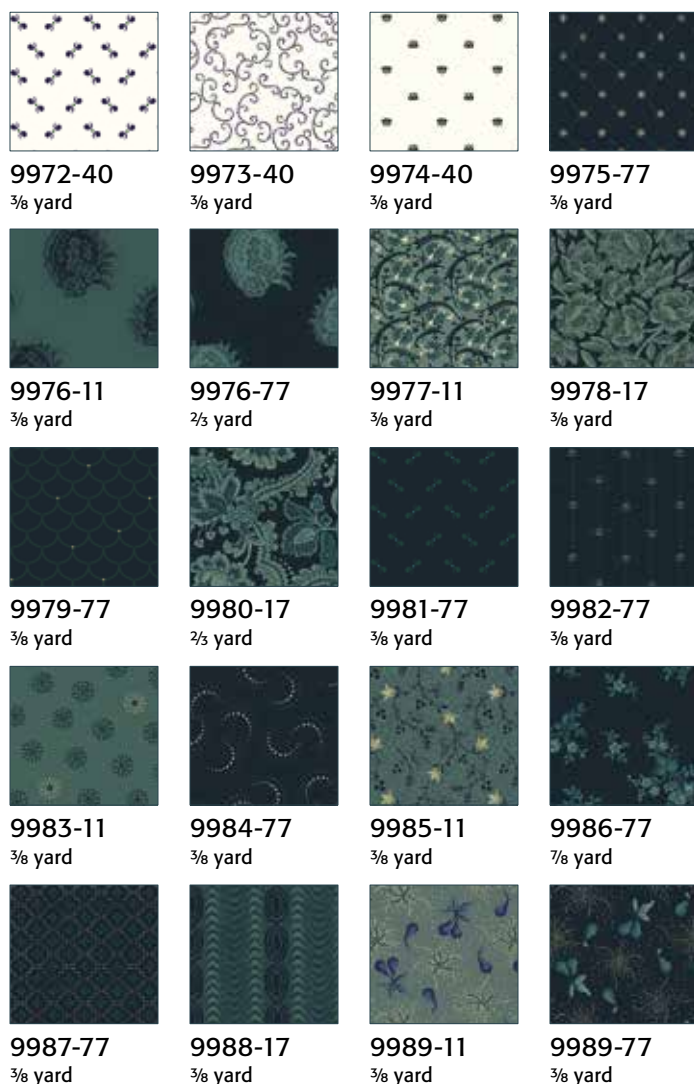
# WILLOW HOLLOW

## GEESE IN THE WILLOWS PATCHWORK QUILT

Finished Quilt Size: 64½" x 64½"

### MATERIALS

*Yardages are based on a 42" width of useable fabric after prewashing and removing selvages.*



**In addition to the itemized fabrics, you'll need:**

- 1 square of batting, 67" x 67"
- 3¾ yards of backing fabric (Kim suggests the dark blue foulard print, 9980-17)
- Standard sewing and quilting supplies

### CUTTING

*Cut all pieces across the width of the fabric in the order given unless otherwise noted. Width of fabric strips are referred to as WOF.*

**From blue print 9980-17, cut:**

1 strip, 20½" x WOF; crosscut into 1 square, 20½" x 20½"

**From cream print 9973-40, cut:**

1 strip, 10½" x WOF; crosscut into 4 squares, 10½" x 10½"

**From each of blue prints 9976-11, 9982-77, 9986-77, and 9987-77, cut:**

1 strip, 10½" x WOF; crosscut into 2 rectangles, 10½" x 20½" (combined total of 8). Keep the pieces organized by print. Reserve the remainder of blue print 9986-77 for the binding.

**From blue print 9976-77, cut:**

2 strips, 10½" x WOF; crosscut into 4 rectangles, 10½" x 20½"

**From each of blue prints 9975-77, 9979-77, 9981-77, and 9984-77, cut:**

1 strip, 10½" x WOF; crosscut into 1 rectangle, 10½" x 20½" (combined total of 4). Keep the pieces organized by print.

**From each of blue prints 9978-17, 9983-11, 9988-17, 9989-11, 9989-77, cut:**

1 strip, 10½" x WOF; crosscut into 4 squares, 10½" x 10½" (combined total of 20). Keep the pieces organized by print.

**From each of blue prints 9977-11 and 9985-11, cut:**

1 strip, 10½" x WOF; crosscut into 2 squares, 10½" x 10½" (combined total of 4). Keep the pieces organized by print.

**From each of 2 cream prints 9972-40 and 9974-40, cut:**

1 strip, 10½" x WOF; crosscut into 4 squares, 10½" x 10½" (combined total of 8). Keep the pieces organized by print.



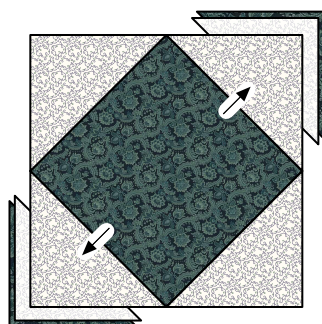
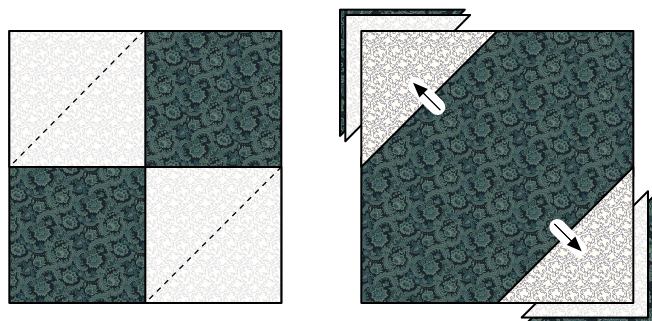
**From the reserved remainder of blue print 9986-77, cut:**

Enough 2½"-wide strips to make a 252" length of binding when joined end to end. (For best use of your fabric, incorporate the remainder of the 10½"-wide strip previously used to cut the patchwork.)

## PIECING the PATCHWORK UNITS

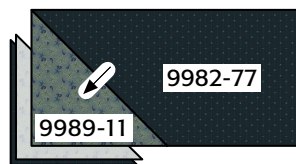
*Sew all pieces with right sides together using a ¼" seam allowance unless otherwise noted. Press the seam allowances as indicated by the arrows or otherwise directed.*

- ① Use a pencil and an acrylic ruler to draw a diagonal sewing line from corner to corner on the wrong side of each blue and cream 10½" square.
- ② Layer a prepared 10½" cream print 9973-40 square onto two opposite corners of the 20½" blue print 9980-17 square as shown. Stitch the cream squares on the drawn lines. Fold the resulting inner triangles open, aligning the corners with the corners of the blue square. Press. Trim away the layers beneath the top triangles, leaving ¼" seam allowances. In the same manner, add cream triangles to the remaining corners of the blue square. The pieced square-in-a-square unit should measure 20½" square, including the seam allowances.



Square-in-a-square unit,  
20½" x 20½"

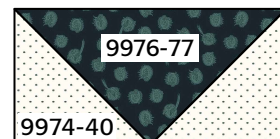
- ③ Referring to the illustrations for print placement and using the remaining blue and cream rectangles and prepared squares, repeat the steps outlined for the square-in-a-square unit to stitch the 10½" x 20½" flying geese units shown below.



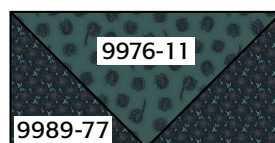
Make 2.



Make 2.



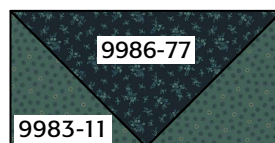
Make 2.



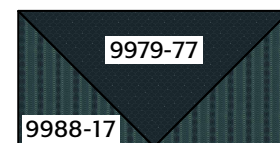
Make 2.



Make 2.



Make 2.



Make 1.



Make 1.



Make 1.



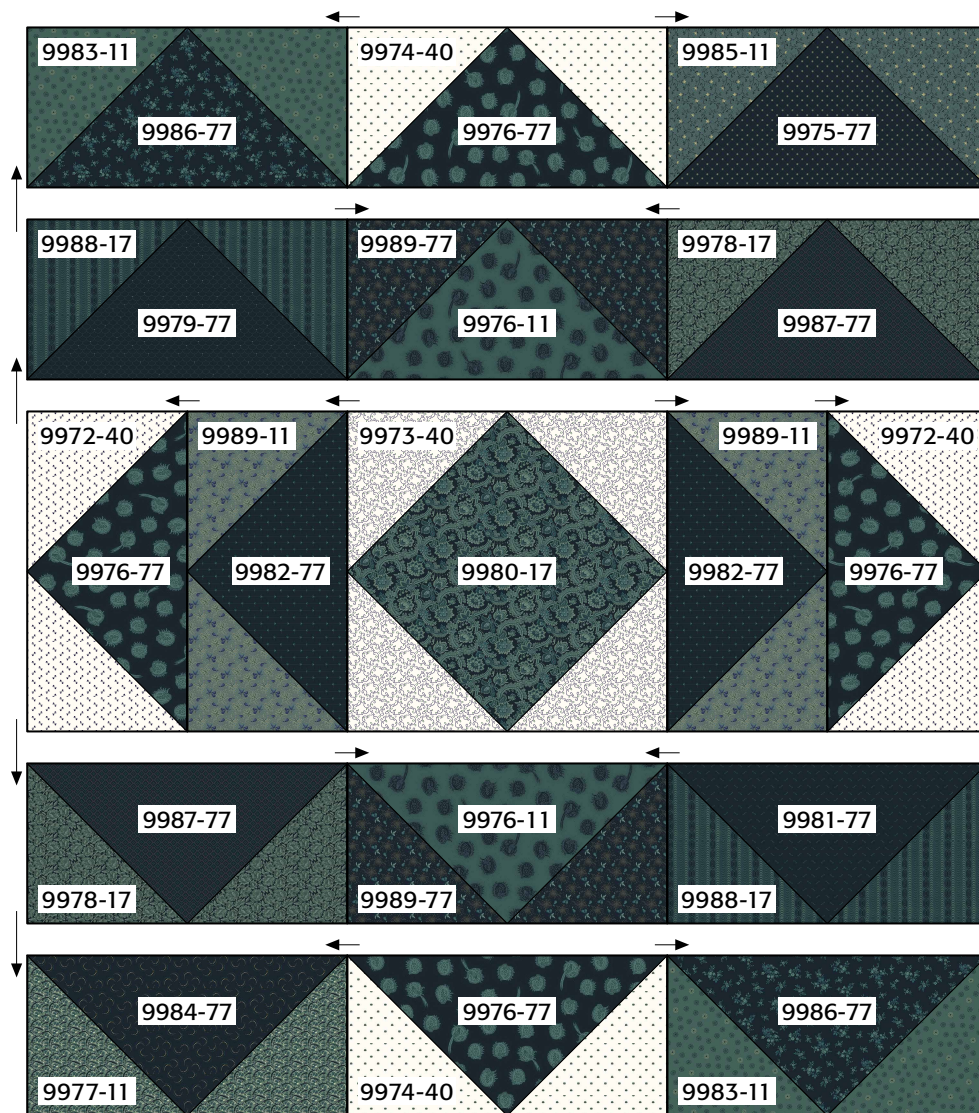
Make 1.

## PIECING the QUILT

Referring to the assembly diagram for positioning of the prints and patchwork units, lay out and piece the quilt. Press.

## COMPLETING the QUILT

Layer and baste the quilt top, batting, and backing. Quilt the layers. Join the dark blue floral print 9986-77 binding strips to make one length and use it to bind the quilt.



Assembly diagram



©2023 Kim Diehl

Every effort has been made to ensure that all projects are error free. All the information is presented in good faith, however no warranty can be given nor results guaranteed as we have no control over the execution of instructions. Therefore, we assume no responsibility for the use of this information or damages that may occur as a result. When errors are brought to our attention, we make every effort to correct and post a revision as soon as possible. Please make sure to check [www.henryglassfabrics.com](http://www.henryglassfabrics.com) for pattern updates prior to starting the project. We also recommend that you test the project prior to cutting for kits. Finally, all free projects are intended to remain free to you and are not for resale or other forms of distribution.