

October Morning

Garden Trellis Lap Quilt

by Kim Diehl



Finished Quilt Size: 56" x 60½"



Henry Glass & Co. Inc.



49 West 37th Street, New York, NY 10018

tel: 212-686-5194 • fax: 212-532-3525

Toll-free: 800-294-9495

www.henryglassfabrics.net

facebook

October Morning

Garden Trellis Lap Quilt

Finished Quilt Size: 56" x 60½"

MATERIALS

Yardages are based on a 42" width of useable fabric after prewashing and removing selvages.

⅝ yard of teal autumn mandala print for patchwork and binding (9139-77)

19 fat eighths (9" x 21") total of assorted blue prints (4), green prints (5), brown prints (5), and orange prints (5), for patchwork (9126-33, 66; 9127-30, 33; 9128-33; 9129-33; 9130-33; 9131-66; 9132-66; 9133-66; 9135-30; 9136-30, 66; 9137-30; 77; 9138-30; 9140-11; 9141-77; 9142-11)

⅔ yard each of 4 assorted cream prints for patchwork (9143-44; 9144-44; 9145-44; 9146-44)

3½ yards of backing print (Kim suggests the green acorn thicket print, 9136-66)

62" x 67" rectangle of batting

Standard sewing and quilting supplies

CUTTING

Cut all pieces across the width of the fabric in the order given unless otherwise noted.

From the teal autumn mandala print, cut:

2 strips, 2" x 42"; crosscut into 9 rectangles, 2" x 5½"

6 binding strips, 2½" x 42"

Reserve the remainder of this print, including the unused length of the second 2" x 42" strip, for later use.

From each of the 19 assorted blue, green, brown, and orange prints, cut:

3 strips, 2" x 21"; crosscut into 9 rectangles, 2" x 5½" (combined total of 171, grand total of 180 with previously cut teal rectangles)

Keep the rectangles organized by color. Reserve the remainder of these prints for later use.

From each of the 4 assorted cream prints, cut:

10 strips, 2" x 42"; crosscut into:

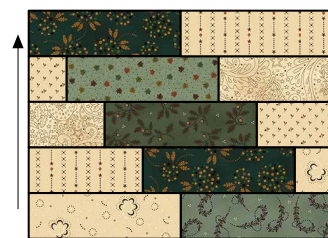
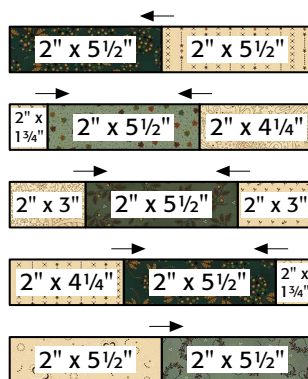
- 18 rectangles, 2" x 5½" (combined total of 72)
- 18 rectangles, 2" x 4¼" (combined total of 72)
- 18 rectangles, 2" x 3" (combined total of 72)
- 18 rectangles, 2" x 1¾" (combined total of 72)
- 11 rectangles, 2" x 6¾" (combined total of 44)

Keep the rectangles organized by size.

PIECING the Stair Step Blocks

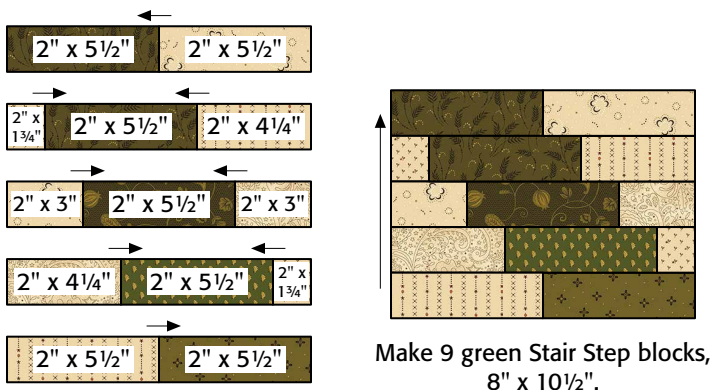
Sew all pieces with right sides together and a ¼" seam allowance unless otherwise noted. Press the seam allowances as indicated by the arrows or otherwise specified.

- 1 Select five assorted blue rectangles, 2" x 5½". From the assorted cream rectangles, choosing the prints randomly, select:
 - 2 rectangles, 2" x 5½"
 - 2 rectangles, 2" x 1¾"
 - 2 rectangles, 2" x 4¼"
 - 2 rectangles, 2" x 3"
- 2 Using the illustration as a guide, lay out the blue and cream patchwork pieces in five horizontal rows. Join the pieces in each row. Press. Join the rows. Press. The pieced blue Stair Step block should measure 8" x 10½", including the seam allowances. Repeat to piece a total of nine blue Stair Step blocks.

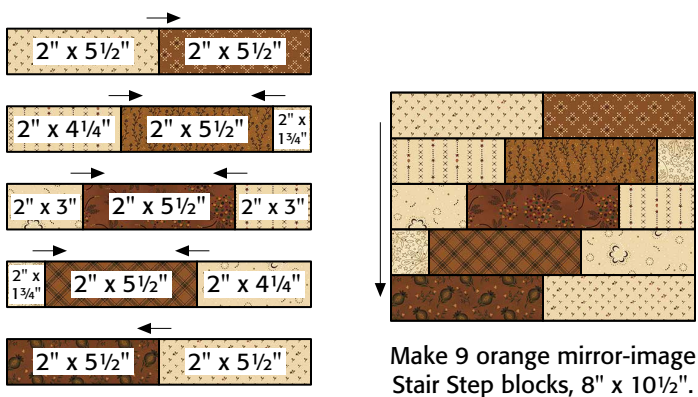


Make 9 blue Stair Step blocks, 8" x 10½".

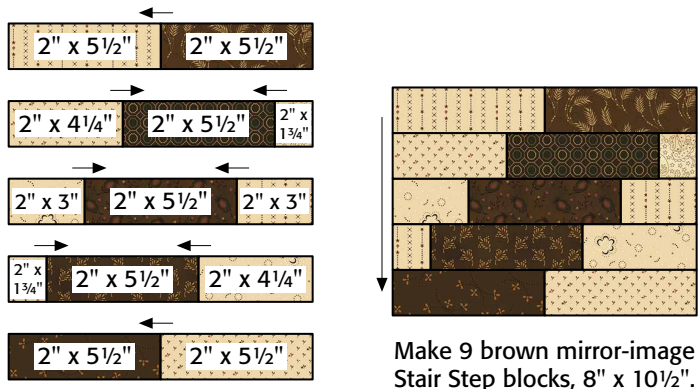
- 3 Substituting the assorted green prints for the assorted blue prints, repeat steps 1 and 2 to piece a total of nine green Stair Step blocks measuring 8" x 10½", including the seam allowances.



- 4 Referring to the illustration below for patchwork sizes and layout, follow steps 1 and 2 using the orange and cream rectangles to piece nine orange mirror-image Stair Step blocks measuring 8" x 10½", including the seam allowances.

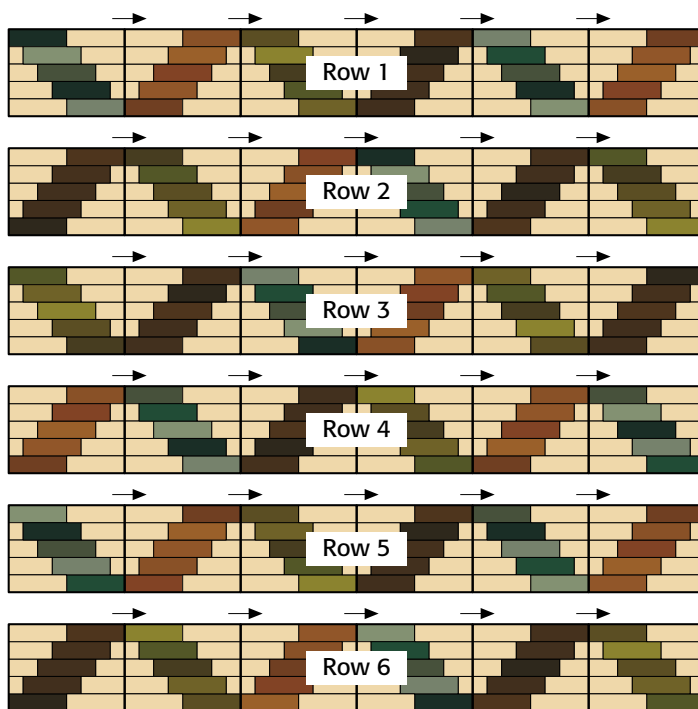


- 5 Using the remaining assorted brown and cream print patchwork pieces, and referring to the illustration below, repeat steps 1 and 2 to piece nine brown mirror-image Stair Step blocks measuring 8" x 10½", including the seam allowances.



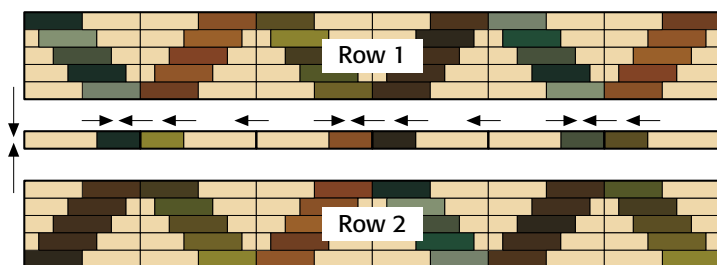
PIECING the Stair Step Block Rows

Referring to the illustration, lay out the Stair Step and mirror-image Stair Step blocks as shown to piece and press Stair Step block rows 1–6, with each row measuring 8" x 60½", including the seam allowances.



PIECING and ADDING the Sashing Rows

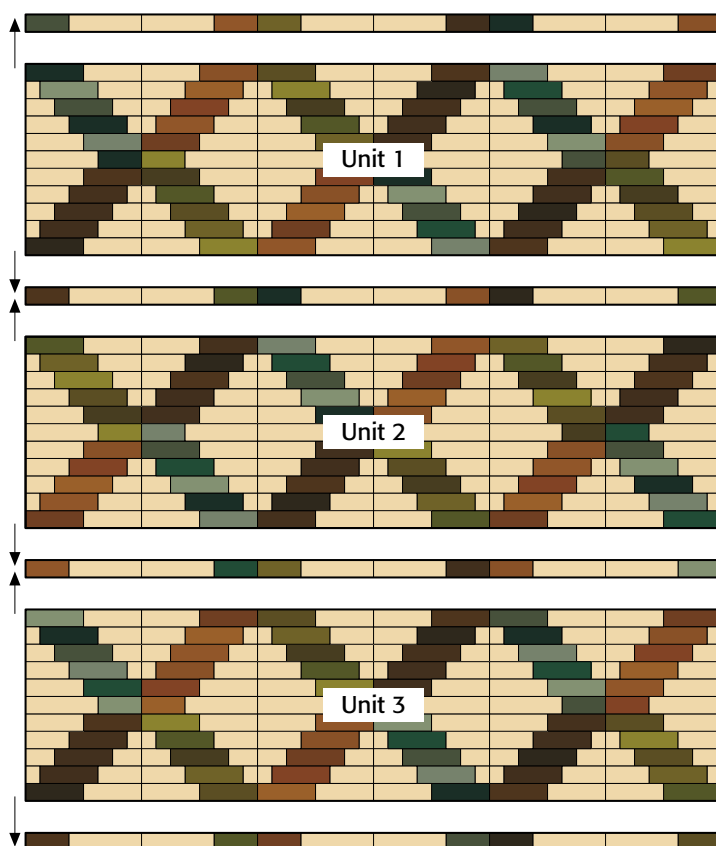
- 1 Lay out block rows 1 and 2 horizontally, one above the other, leaving a bit of space between the rows. Using the illustration below as a guide, lay out six assorted cream 2" x 6¾" rectangles between the block rows to begin to form a sashing row. From the reserved remainder of all assorted blue, green, orange, and brown prints, cut a total of six rectangles, 2" x 4¼" — these rectangle colors can match the dark color featured in either the top or the bottom block they'll be resting next to, as you choose.
- 2 Join each dark rectangle to the adjacent cream rectangle. Press. Join the resulting pieced rectangles end to end to form one sashing row measuring 2" x 60½", including the seam allowances. Press. Join the block rows to each long side of the sashing row. Press. The pieced patchwork unit should measure 17" x 60½", including the seam allowances.



Patchwork unit, 17" x 60½"

- 3 Repeat steps 1 and 2, using block rows 3 and 4 to form a second patchwork unit, and block rows 5 and 6 to form a third patchwork unit.

- 4 Lay out patchwork units 1, 2 and 3, leaving a bit of space between the units. Again referring to steps 1 and 2, begin to form the final sashing rows by laying out six assorted cream 2" x 6¾" rectangles between each patchwork unit, above the topmost unit, and also below the bottommost unit (total of four new sashing rows). Please note that you'll have two leftover cream rectangles. Use the remaining scraps of assorted blue, green, orange, and brown prints of your choice to add the 2" x 4¼" dark rectangles needed, and complete the sashing strips as previously instructed. Join and press the patchwork units and sashing rows to complete the quilt top.



Quilt assembly

COMPLETING the Quilt

Layer and baste the quilt top, batting, and backing. Quilt the layers. Join the teal binding strips to make one length, and use it to bind the quilt.

Every effort has been made to ensure that all projects are error free. All the information is presented in good faith, however no warranty can be given nor results guaranteed as we have no control over the execution of instructions. Therefore, we assume no responsibility for the use of this information or damages that may occur as a result. When errors are brought to our attention, we make every effort to correct and post a revision as soon as possible. Please make sure to check www.henryglassfabrics.com for pattern updates prior to starting the project. We also recommend that you test the project prior to cutting for kits. Finally, all free projects are intended to remain free to you and are not for resale or other forms of distribution.



Henry Glass & Co., Inc.

©2020 Kim Diehl

October Morning *Fabrics in the Collection*



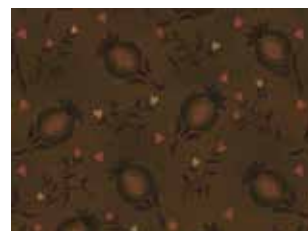
9126-33
Waving Wheat, Brown



9126-66
Waving Wheat, Green



9127-30
Pomegranate Sprays, Orange



9127-33
Pomegranate Sprays, Brown



9128-33
Berry Blooms, Brown



9129-33
Daisy Stems, Brown



9130-33
Dotted Hexies, Brown



9131-66
Garden Bramble, Green



9132-66
Pressed Leaves, Green



9133-66
Acorn Blossoms, Green



9135-30
Trellis, Orange



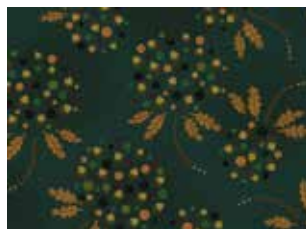
9136-30
Acorn Thicket, Orange



9136-66
Acorn Thicket, Green



9137-30
Meadow, Orange



9137-77
Meadow, Teal



9138-30
Nine-Patch Clusters, Orange



9139-77
Autumn Mandala, Teal



9140-11
Tossed Maple Leaves, Blue



9141-77
Acorn Branches, Blue



9142-11
Infinity Sprays, Blue



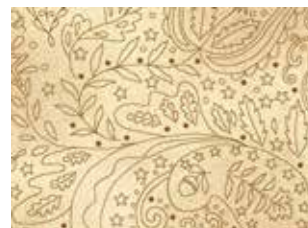
9143-44
Harvest Stripe, Cream



9144-44
October Garden, Cream



9145-44
Star Sprigs, Cream



9146-44
Autumn Paisley, Cream