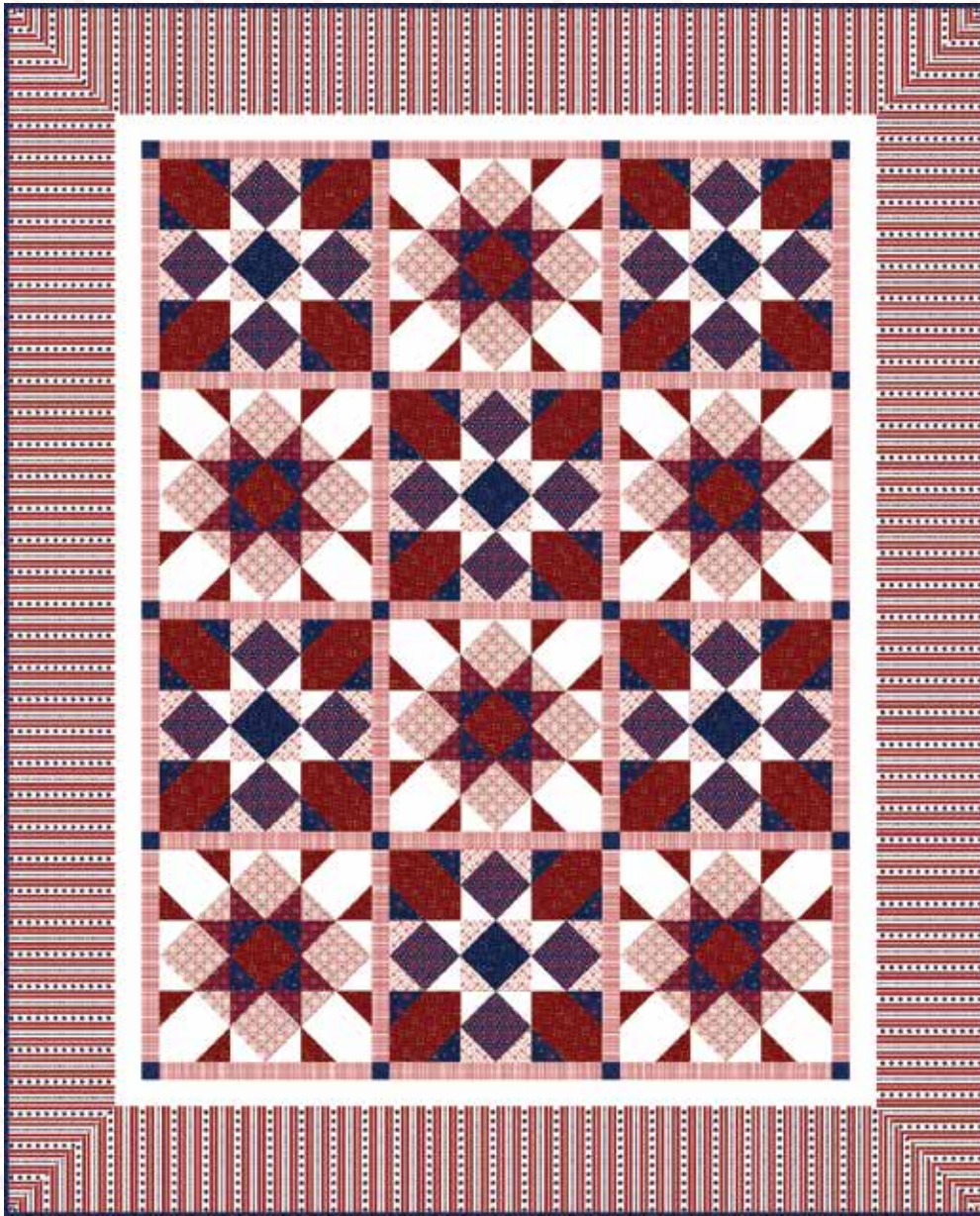


FRIDAY HARBOR

••••• A Free Project Sheet •••••
••••• NOT FOR RESALE •••••

By Janet Nesbitt of One Sister Designs

Quilt Design by Heidi Pridemore



Quilt 2

Skill Level: Advanced Beginner

 Henry Glass & Co., Inc.



facebook

Finished Quilt Size: 55" x 68"
(139.70 cm x 172.72 cm)

49 West 37th Street, New York, NY 10018

tel: 212-686-5194 fax: 212-532-3525

Toll Free: 800-294-9495

www.henryglassfabrics.net

Please check our website for pattern updates before starting this project.

FRIDAY HARBOR Quilt 2

Finished Quilt Size: 55" x 68"
(139.70 cm x 172.72 cm)

Fabrics in the Collection



Zig Zag Texture
Cream/Red – 3175-48



Zig Zag Texture
Navy – 3175-77



Churndash
Navy – 3176-77



Churndash
Red – 3176-88



Star Flower
Cream/Red – 3177-48



Star Flower
Red – 3177-88



Flower Dot
Navy/Teal – 3178-77



Flower Dot
Red/Teal – 3178-88



Wreath
Navy – 3179-77



Wreath
Red – 3179-88



Window Pane Plaid
Light Blue – 3180-17



Window Pane Plaid
Cream/Red – 3180-48



Large Plaid
Cream/Navy – 3181-47



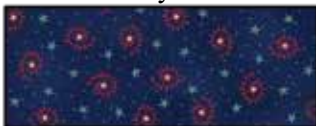
Large Plaid
Cream/Red – 3181-48



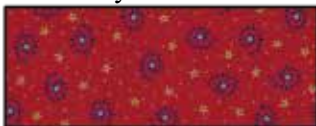
Star Stripe
Cream – 3182-44



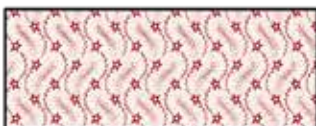
Star Stripe
Red – 3182-88



Jigsaw Swirl
Navy – 3183-77



Jigsaw Swirl
Red – 3183-88



Wavy Stars
Cream/Red – 3184-48



Wavy Stars
Navy – 3184-77



Friday Harbor Panel 24 Inch by 44 Inch
Cream – 3185P-44

Select Fabric from
Folio Basics



White on White
7755-01

Materials

¼ yard (0.23m)	Churndash - Navy (A)	3176-77
½ yard (0.46m)	Wavy Stars - Cream/Red (B)	3184-48
½ yard (0.46m)	Zig Zag Texture - Navy (C)	3175-77
1 ¼ yards (1.15m)	Folio Basics - White on White (D)	7755-01
⅞ yard (0.81m)	Churndash - Red (E)	3176-88
½ yard (0.46m)	Jigsaw Swirl - Navy (F)	3183-77
⅓ yard (0.31m)	Star Flower - Red (G)	3177-88
⅝ yard (0.58m)	Window Pane Plaid - Cream/Red (H)	3180-48
⅔ yard (0.61m)	Wavy Stars - Navy (I)	3184-77*
1 ⅜ yards (1.26m)	Star Stripe - Cream (J)	3182-44
⅔ yard (0.61m)	Star Flower - Cream/Red (K)	3177-48
3 ½ yards (3.21m)	Large Plaid - Cream/Navy (Backing)	3181-47

*Includes binding

Cutting Instructions

Please note: All strips are cut across the width of fabric (WOF) from selvage to selvage unless otherwise noted.

From the Churndash - Navy (A), cut:

- (1) 4 ½" x WOF strip. Sub-cut (6) 4 ½" squares.

From the Wavy Stars - Cream/Red (B), cut:

- (5) 2 ½" x WOF strips. Sub-cut (72) 2 ½" squares.

From the Zig Zag Texture - Navy (C), cut:

- (3) 4 ½" x WOF strips. Sub-cut (24) 4 ½" squares.

From the Folio Basics - White on White (D), cut:

- (3) 4 ½" x WOF strips. Sub-cut (24) 4 ½" squares.
- (6) 2 ½" x WOF strips. Sub-cut (96) 2 ½" squares.
- (3) 2" x WOF strips. Sew the strips together end to end with diagonal seams and cut (2) 2" x 53 ½" strips.
- (3) 2" x WOF strips. Sew the strips together end to end with diagonal seams and cut (2) 2" x 43 ½" strips.

From the Churndash - Red (E), cut:

- (4) 4 ½" x WOF strips. Sub-cut (30) 4 ½" squares.
- (3) 2 ½" x WOF strips. Sub-cut (48) 2 ½" squares.

From the Jigsaw Swirl - Navy (F), cut:

- (5) 2 ½" x WOF strips. Sub-cut (72) 2 ½" squares.

From the Star Flower - Red (G), cut:

- (3) 2 ½" x WOF strips. Sub-cut (48) 2 ½" squares.

From the Window Pane Plaid - Cream/Red (H), cut:

- (11) 1 ½" x WOF strips. Sub-cut (31) 1 ½" x 12 ½" strips.

From the Wavy Stars - Navy (I), cut:

- (1) 1 ½" x WOF strip. Sub-cut (20) 1 ½" squares.
- (7) 2 ½" x WOF strips for the binding.

From the Star Stripe - Cream (J), cut:

- (4) 6 ½" x WOF strips. Sew the strips together end to end with diagonal seams and cut (2) 6 ½" x 72" strips.
- (3) 6 ½" x WOF strips. Sew the strips together end to end with diagonal seams and cut (2) 6 ½" x 59" strips.

From the Star Flower - Cream/Red (K), cut:

- (3) 4 ½" x WOF strips. Sub-cut (24) 4 ½" squares.
- (2) 2 ½" x WOF strips. Sub-cut (24) 2 ½" squares.

From the Large Plaid - Cream/Navy (Backing), cut:

- (2) 63" x WOF strips for the backing. Sew the strips together and trim to make the 63" x 76" back.

Block Assembly

Note: The arrows in figures represent the fabric print direction. Pay attention to the fabric and unit orientations when assembling the various components. Use a ¼" seam allowance with right sides together (RST) unless otherwise noted.

1. Place (1) 2 ½" Fabric B square on the top left corner of (1) 4 ½" Fabric A square, right sides together (Fig. 1). Sew across the diagonal of the smaller square from the upper right corner to the lower left corner (Fig. 1). Flip open the triangle formed and press. Trim away the excess fabric from behind the triangle ¼" away from the sewn seam (Fig. 2).

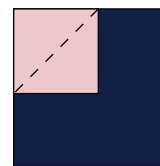


Fig. 1

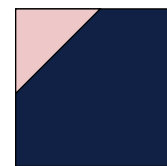


Fig. 2

2. Follow Figure 3 for the seam direction to add a 2 ½" Fabric B square to each of the remaining corners of the 4 ½" Fabric A square to make (1) Unit 1 square (Fig. 4).
3. Repeat Steps 1-2 to make (6) Unit 1 squares total.

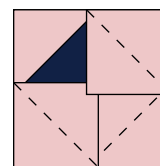


Fig. 3

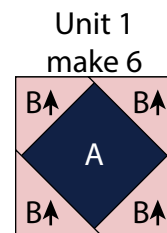


Fig. 4

4. Repeat Steps 1-2 and refer to Figures 5-10 for fabric identification, placement, seam direction and orientation to make the indicated number of unit squares for Unit 2 through Unit 7.

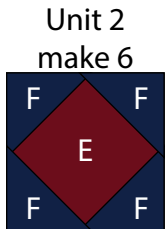


Fig. 5

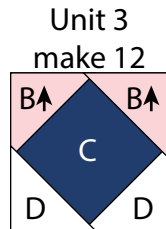


Fig. 6

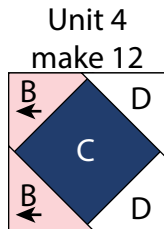


Fig. 7

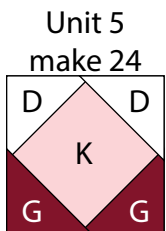


Fig. 8



Fig. 9

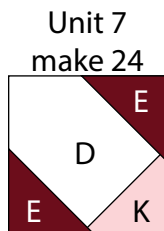


Fig. 10

5. Sew (1) Unit 6 square to each side of (1) Unit 3 square to make the top row. Repeat to make the bottom row. Sew (1) Unit 4 square to each side of (1) Unit 1 square to make the middle row. Sew together the (3) rows lengthwise to make (1) 12 1/2" Block One square (Fig. 11). Repeat to make (6) Block One squares total.

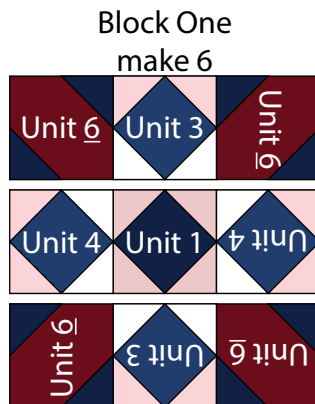


Fig. 11

6. Repeat Step 5 and refer to Figure 12 for component identification, placement and orientation to make (6) Block Two squares.

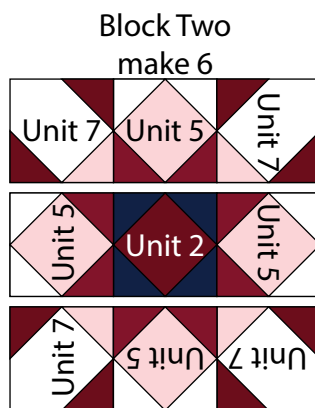


Fig. 12

7. Sew together (4) 1 1/2" Fabric I squares and (3) 1 1/2" x 12 1/2" Fabric H strips, end to end and alternating them from left to right, to make (1) Block Three strip (Fig. 13). Repeat to make (5) Block Three strips total.

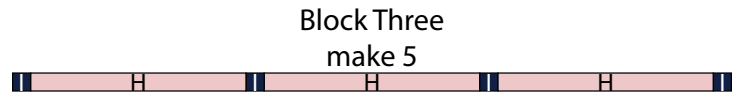


Fig. 13

8. Sew together (1) 1 1/2" x 12 1/2" Fabric H strip, (1) Block One square, (1) 1 1/2" x 12 1/2" Fabric H strip, (1) Block Two square, (1) 1 1/2" x 12 1/2" Fabric H strip, (1) Block One square and (1) 1 1/2" x 12 1/2" Fabric H strip, in that order from left to right, to make Row One (Fig. 14). Repeat to make Row Three.

9. Sew together (1) 1 1/2" x 12 1/2" Fabric H strip, (1) Block Two square, (1) 1 1/2" x 12 1/2" Fabric H strip, (1) Block One square, (1) 1 1/2" x 12 1/2" Fabric H strip, (1) Block Two square and (1) 1 1/2" x 12 1/2" Fabric H strip, in that order from left to right, to make Row Two (Fig. 14). Repeat to make Row Four.

10. Sew together the (5) Block Three strips and (4) pieced Rows in numerical order, lengthwise and alternating them from top to bottom, to make the 40 1/2" x 53 1/2" Center Block (Fig. 14).

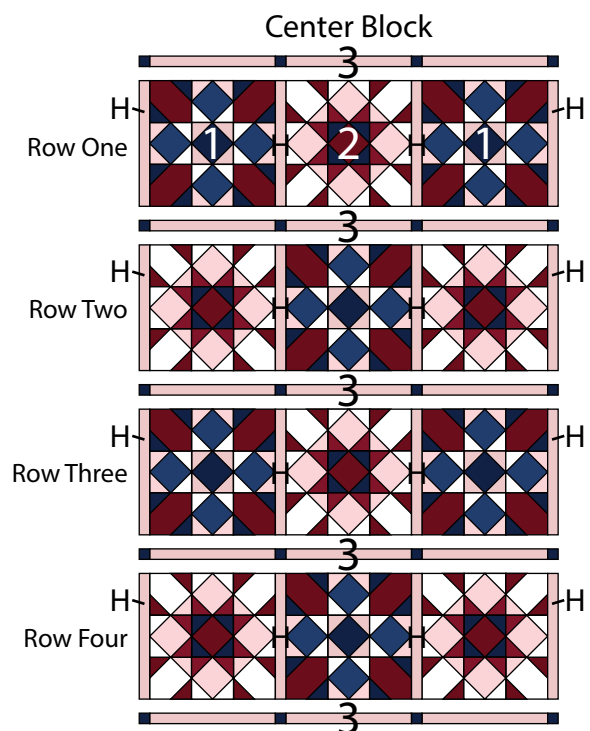


Fig. 14

FRIDAY HARBOR

Quilt 2

Quilt Top Assembly

(Follow the *Quilt Layout* while assembling the quilt top.)

11. Sew (1) 2" x 53 1/2" Fabric D strip to each side of the Center Block. Sew (1) 2" x 43 1/2" Fabric D strip to the top and to the bottom of the Center Block.

12. Center (1) 6 1/2" x 72" Fabric J strip on (1) side of the Center Block and pin in place. Start sewing the strip a 1/4" from the top edge of the block and stop a 1/4" from the bottom edge. **DO NOT TRIM THE EXCESS.** Repeat with the opposite side.

13. Repeat Step 12 to sew (1) 6 1/2" x 59" Fabric J strip to the top and to the bottom of the Center Block, making sure to stop and start 1/4" away from each end of the block. To miter each corner, fold the Center Block on a diagonal, wrong side together. This should line up the strips from adjacent sides (Fig. 15).

14. Starting at the sewn seam (represented by the arrow in Figure 15), draw a 45-degree line to the edge of the fabric. Sew on the drawn line. Trim the excess fabric leaving a 1/4" seam. Repeat this step with the remaining corners to make the quilt top.

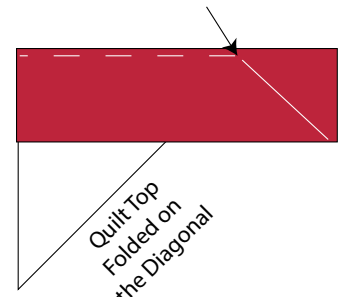
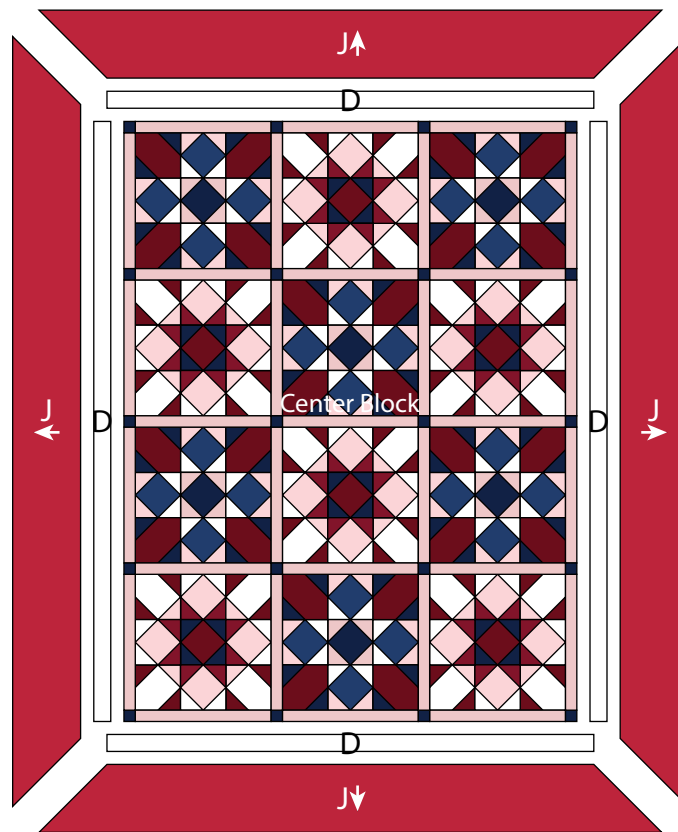


Fig. 15

15. Layer and quilt as desired.

16. Sew the (7) 2 1/2" x WOF Fabric I strips together, end to end with 45-degree seams, to make the binding. Fold this long strip in half lengthwise with wrong sides together and press.

17. Bind as desired.



Quilt Layout

Every effort has been made to ensure that all projects are error free. All the information is presented in good faith, however no warranty can be given nor results guaranteed as we have no control over the execution of instructions. Therefore, we assume no responsibility for the use of this information or damages that may occur as a result. When errors are brought to our attention, we make every effort to correct and post a revision as soon as possible. Please make sure to check www.henryglassfabrics.net for pattern updates prior to starting the project. We also recommend that you test the project prior to cutting for kits. Finally, all free projects are intended to remain free to you and are not for resale.