

Farmhouse Christmas

Patchwork Lap Quilt

by Kim Diehl



Finished Quilt Size: 56½" x 62½"



Henry Glass & Co., Inc.



49 West 37th Street, New York, NY 10018

tel: 212-686-5194 • fax: 212-532-3525

Toll-free: 800-294-9495

www.henryglassfabrics.net

facebook

Farmhouse Christmas Patchwork Lap Quilt

Finished Quilt Size: 56½" x 62½"

MATERIALS

Yardages are based on a 42" width of useable fabric after prewashing and removing selvages.

- 1 fat quarter (18" x 21") of red delicate paisley print (dark red) for bow and wreath patchwork (9674-88)
- 1 fat quarter of red diamond print (medium red) for bow and wreath patchwork (9680-88)
- 6 fat eighths (9" x 21") of assorted red prints for wreath patchwork (9668-88; 9671-88; 9672-88; 9673-88; 9675-88; 9682-88)
- ⅔ yard of red stylized floral print for wreath patchwork and binding (9676-88)
- 1½ yards *each* of cream pomegranate print and cream nine patch print for bow and wreath patchwork (9678-40; 9679-40)
- 9 fat quarters of assorted green prints for wreath patchwork (9668-66; 9669-66; 9670-66; 9671-66; 9672-66; 9674-66; 9675-66; 9676-66; 9677-66)
- ⅜ yard of tan delicate floral print for wreath centers (9681-44)
- 3½ yards of fabric for backing
- 63" x 69" square of batting
- Standard sewing and quilting supplies

CUTTING

Referring to the swatch page at the end of this handout as needed, cut all pieces across the width of the fabric in the order given unless otherwise noted. Cutting instructions for this project have been divided into two sections: bow patchwork and wreath patchwork and binding. Organize the cut pieces in each section into patchwork sets. For added choices as you piece the patchwork, you may wish to cut a handful of extra red and green wreath pieces in each given size.

Bow Patchwork

From the dark red print, cut:

- 1 strip, 4⅞" x 21"; crosscut into 3 squares, 4⅞" x 4⅞".
Cut each square in half diagonally *once* to yield 2 triangles (total of 6). From the remainder of the strip, cut 2 squares, 2½" x 2½".
- 1 strip, 3½" x 21"; crosscut into 2 rectangles, 3½" x 4½".
From the remainder of the strip cut:
 - 1 square, 2⅞" x 2⅞"; cut in half diagonally *once* to yield 2 triangles
 - 1 square, 2½" x 2½" (combined total of 3 with previously cut squares)

Reserve the remainder of the dark red print for the wreath patchwork.

From the medium red print, cut:

- 2 strips, 4½" x 21"; crosscut *each strip* into:
 - 4 squares, 4½" x 4½" (total of 8)
 - 1 rectangle, 2½" x 4½" (total of 2)
 - 1 strip, 3½" x 21"; crosscut into 2 squares, 3½" x 3½"
- Reserve the remainder of the medium red print for the wreath patchwork.

From the cream pomegranate print, cut:

- 4 strips, 1½" x 42"
 - 1 strip, 4½" x 42"; crosscut into 2 squares, 4½" x 4½"
- Reserve the remainder of the cream pomegranate print.

From the reserved remainder of the cream pomegranate print and the cream nine patch print, cut a combined total of:

- 3 squares, 4⅞" x 4⅞"; cut each square in half diagonally *once* to yield 2 triangles (total of 6)
- 2 squares, 4½" x 4½"
- 1 square, 2⅞" x 2⅞"; cut in half diagonally *once* to yield 2 triangles
- 4 squares, 2½" x 2½"
- 2 rectangles, 1½" x 2½"
- 4 squares, 1½" x 1½"

Reserve the remainder of the two cream prints for the wreath patchwork.

Wreath Patchwork and Binding

From the red stylized floral print, cut:

7 binding strips, $2\frac{1}{2}" \times 42"$

Reserve the remainder of the red stylized floral print.

From the reserved remainder of the dark and medium red prints, the red stylized floral print, and the 6 assorted red prints, cut a *combined total* of:

192 squares, $2\frac{1}{2}" \times 2\frac{1}{2}"$

From the reserved remainder of the 2 cream prints, cut a *combined total* of:

128 rectangles, $2\frac{1}{2}" \times 3\frac{1}{2}"$

64 squares, $3\frac{1}{2}" \times 3\frac{1}{2}"$

128 squares, $2\frac{1}{2}" \times 2\frac{1}{2}"$

From the 9 assorted green prints, cut a *combined total* of:

64 rectangles, $2\frac{1}{2}" \times 7\frac{1}{2}"$

64 rectangles, $2\frac{1}{2}" \times 5\frac{1}{2}"$

From the tan delicate floral print, cut:

4 strips, $2\frac{1}{2}" \times 42"$; crosscut into 64 squares, $2\frac{1}{2}" \times 2\frac{1}{2}"$

PIECING the Bow Unit

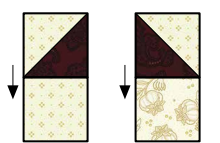
Sew all pieces with right sides together using a $\frac{1}{4}"$ seam allowance unless otherwise noted. Press the seam allowances as indicated by the arrows or otherwise specified.

- 1 Select the pieces cut for the bow patchwork.
- 2 Use a pencil and an acrylic ruler to draw a diagonal sewing line from corner to corner on the wrong side of the dark red $2\frac{7}{8}"$ square. Layer the prepared dark red square onto the cream $2\frac{7}{8}"$ square. Stitch the pair together $\frac{1}{4}"$ out from each side of the drawn diagonal line. Cut the pieced unit apart on the drawn line. Press the resulting two half-square-triangle units. Trim away the dog-ear points. Each unit should measure $2\frac{1}{2}"$ square, including the seam allowances.



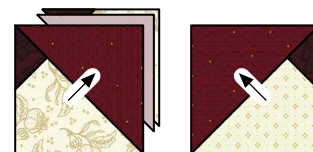
Make 2 units,
 $2\frac{1}{2}" \times 2\frac{1}{2}"$.

- 3 Join each half-square-triangle unit to a cream $2\frac{1}{2}"$ square to make a step 3 bow-tip unit and a mirror-image step 3 bow-tip unit as shown. Press.



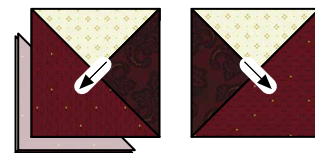
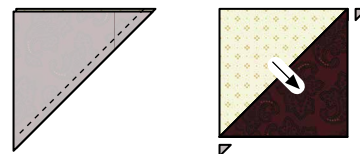
Make 1 unit and
1 mirror-image unit,
 $2\frac{1}{2}" \times 4\frac{1}{2}"$.

- 4 Draw a diagonal sewing line on the wrong side of two dark red $2\frac{1}{2}"$ squares and two medium red $4\frac{1}{2}"$ squares. Layer a prepared dark red square onto one corner of a cream $4\frac{1}{2}"$ square. Stitch the pair along the drawn line. Fold the resulting inner triangle open, aligning the corner with the corner of the bottom square. Press. Trim away the layers beneath the top triangle, leaving a $\frac{1}{4}"$ seam allowance. Repeat to piece a second unit. Layer a prepared medium red square onto one unit, with the drawn line positioned over the dark red corner. Stitch, press, and trim as previously instructed to make a step 4 unit measuring $4\frac{1}{2}"$ square, including the seam allowances. Repeat to make a mirror-image step 4 unit, orienting the dark red corner of the previously pieced unit and the medium red square as shown.



Make 1 unit and
1 mirror-image unit,
 $4\frac{1}{2}" \times 4\frac{1}{2}"$.

- 5 Choose six dark red triangles and six cream triangles cut from $4\frac{7}{8}"$ squares, and six medium red $4\frac{1}{2}"$ squares. Join a dark red and cream triangle along the long diagonal edges. Press. Trim away the dog-ear points. Repeat for a total of six half-square-triangle units measuring $4\frac{1}{2}"$ square, including the seam allowances. Draw a diagonal sewing line on the wrong side of the medium red $4\frac{1}{2}"$ squares. Layer a prepared medium red square onto a half-square-triangle unit, with the drawn line crossing the patchwork seam. Stitch, press, and trim as previously instructed. Repeat for a total of three step 5 units measuring $4\frac{1}{2}"$ square, including the seam allowances. Repeat to make three mirror-image step 5 units, orienting the half-square-triangle units and medium red squares as shown.



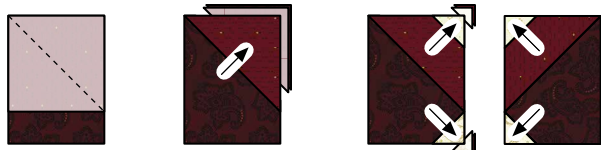
Make 3 units and
3 mirror-image units,
 $4\frac{1}{2}" \times 4\frac{1}{2}"$.

- 6 Select two medium red $2\frac{1}{2}" \times 4\frac{1}{2}"$ rectangles and two cream $2\frac{1}{2}"$ squares. Draw a diagonal sewing line on the wrong side of the two cream squares. Layer, stitch, press, and trim as previously instructed to make a step 6 unit and a mirror-image step 6 unit measuring $2\frac{1}{2}" \times 4\frac{1}{2}"$, including the seam allowances.



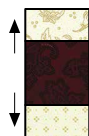
Make 1 unit and
1 mirror-image unit,
 $2\frac{1}{2}" \times 4\frac{1}{2}"$.

- 7 Choose two dark red $3\frac{1}{2}" \times 4\frac{1}{2}"$ rectangles, two medium red $3\frac{1}{2}"$ squares, and four cream $1\frac{1}{2}"$ squares. Draw a diagonal sewing line on the wrong side of each medium red and cream square. Layer, stitch, press, and trim a prepared medium red square onto a dark red rectangle as shown. Layer, stitch, press, and trim a prepared cream square onto two adjacent corners of the dark red unit as shown. Repeat to piece a step 7 unit and a mirror-image step 7 unit measuring $3\frac{1}{2}" \times 4\frac{1}{2}"$, including the seam allowances.



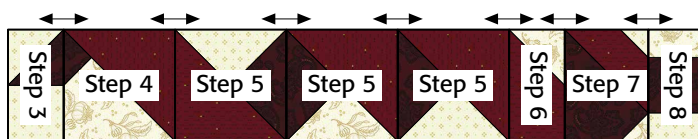
Make 1 unit and
1 mirror-image unit,
 $3\frac{1}{2}" \times 4\frac{1}{2}"$.

- 8 Join a cream $1\frac{1}{2}" \times 2\frac{1}{2}"$ rectangle to opposite sides of a dark red $2\frac{1}{2}"$ square. Press. The pieced step 8 bow center unit should measure $2\frac{1}{2}" \times 4\frac{1}{2}"$, including the seam allowances.



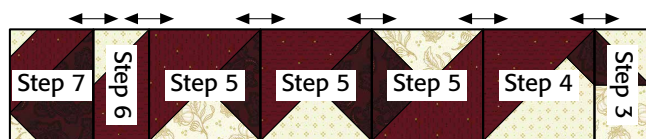
Make 1 unit,
 $2\frac{1}{2}" \times 4\frac{1}{2}"$.

- 9 Set aside the mirror-image units pieced in steps 3–7. Lay out the remaining units as shown to form the left half of the bow unit. Join the units. Press. The pieced left-hand portion of the bow unit should measure $4\frac{1}{2}" \times 25\frac{1}{2}"$, including the seam allowances.



Left-hand bow unit,
 $4\frac{1}{2}" \times 25\frac{1}{2}"$

- 10 Lay out, join, and press the reserved mirror-image units as shown to form the right half of the bow unit. The pieced right-hand portion of the bow unit should measure $4\frac{1}{2}" \times 23\frac{1}{2}"$, including the seam allowances.

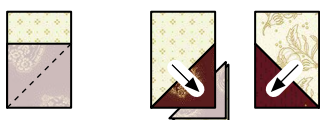


Right-hand bow unit,
 $4\frac{1}{2}" \times 23\frac{1}{2}"$

- 11 Referring to the quilt pictured on the handout cover, join the right and left portions of the bow unit. Press the seam allowances toward the left-hand portion. The bow unit should now measure $4\frac{1}{2}" \times 48\frac{1}{2}"$, including the seam allowances.
- 12 Join a $4\frac{1}{2}"$ cream pomegranate square to each end of the bow unit. Press the seam allowances toward the cream squares.
- 13 Join two cream pomegranate $1\frac{1}{2}" \times 42"$ strips to make one length. Press the seam allowances to one side. Repeat to piece a second cream strip. Positioning the seams at the center, join the pieced cream strips to the top and bottom edges of the bow unit. Press the seam allowances toward the cream strips. Trim away the excess cream strip lengths. The pieced bow unit should measure $6\frac{1}{2}" \times 56\frac{1}{2}"$, including the seam allowances.

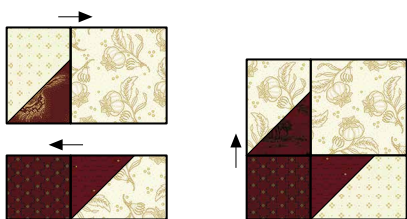
PIECING *the Wreath Units*

- 1 Select the pieces cut for the wreath patchwork.
- 2 Choosing the prints randomly, draw a diagonal sewing line on the wrong side of 128 red $2\frac{1}{2}$ " squares. Reserve the remaining red $2\frac{1}{2}$ " squares.
- 3 Layer a prepared red $2\frac{1}{2}$ " square onto one end of a cream $2\frac{1}{2}$ " x $3\frac{1}{2}$ " rectangle as shown. Stitch, press, and trim as previously instructed to form a triangle-tipped rectangle measuring $2\frac{1}{2}$ " x $3\frac{1}{2}$ ", including the seam allowances. In the same manner, stitch a mirror-image triangle-tipped rectangle. Repeat to sew a total of 64 triangle-tipped rectangles and 64 mirror-image triangle-tipped rectangles.



Make 64 units and
64 mirror-image units,
 $2\frac{1}{2}$ " x $3\frac{1}{2}$ ".

- 4 Lay out one triangle-tipped rectangle, one mirror-image triangle-tipped rectangle, one reserved red $2\frac{1}{2}$ " square, and one cream $3\frac{1}{2}$ " square in two horizontal rows. Join the pieces in each row. Press. Join the rows. Press. Repeat to piece a total of 64 corner units measuring $5\frac{1}{2}$ " square, including the seam allowances.



Make 64 corner units,
 $5\frac{1}{2}$ " x $5\frac{1}{2}$ ".

- 5 Draw a diagonal sewing line on the wrong side of each of the cream $2\frac{1}{2}$ " squares and tan delicate floral $2\frac{1}{2}$ " squares.
- 6 Choosing the print randomly, select a green $2\frac{1}{2}$ " x $7\frac{1}{2}$ " rectangle. Layer a prepared tan $2\frac{1}{2}$ " square onto the left end of the rectangle and a prepared cream $2\frac{1}{2}$ " square onto the right end of the rectangle as shown. Stitch, press, and trim as previously instructed to add triangle tips. Repeat to

piece a total of 64 long rectangle units measuring $2\frac{1}{2}$ " x $7\frac{1}{2}$ ", including the seam allowances. Reserve the remaining prepared cream $2\frac{1}{2}$ " squares.



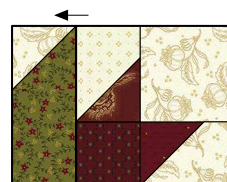
Make 64 units,
 $2\frac{1}{2}$ " x $7\frac{1}{2}$ ".

- 7 Choosing the print randomly, select a green $2\frac{1}{2}$ " x $5\frac{1}{2}$ " rectangle. Use a reserved prepared cream $2\frac{1}{2}$ " square and follow the step 6 instructions to piece a short rectangle unit as shown. Repeat for a total of 64 short rectangle units measuring $2\frac{1}{2}$ " x $5\frac{1}{2}$ ".



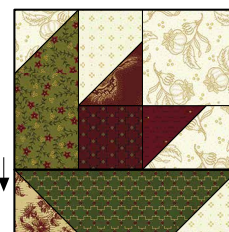
Make 64 short-rectangle units,
 $2\frac{1}{2}$ " x $5\frac{1}{2}$ ".

- 8 Join a short rectangle unit from step 7 to a step 4 corner unit as shown. Press. Repeat to piece a total of 64 patchwork units measuring $5\frac{1}{2}$ " x $7\frac{1}{2}$ ", including the seam allowances.



Make 64 units,
 $5\frac{1}{2}$ " x $7\frac{1}{2}$ ".

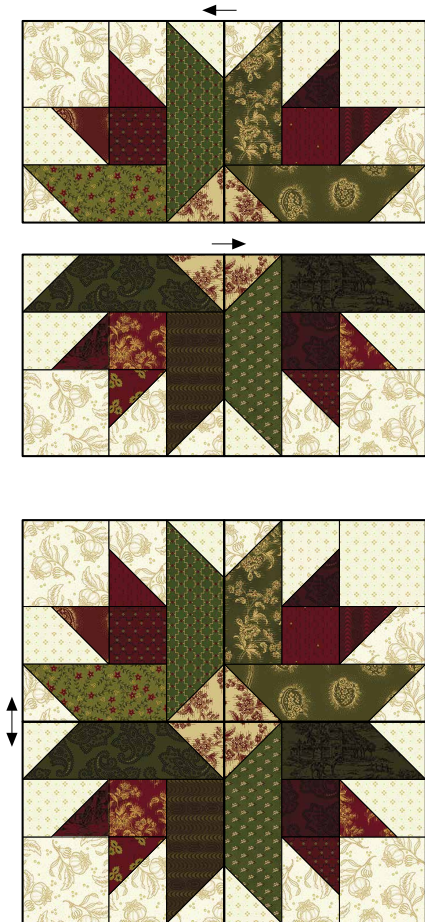
- 9 Join a long rectangle unit from step 6 to the bottom of a step 8 patchwork unit. Press. Repeat to piece a total of 64 wreath quarter-block units measuring $7\frac{1}{2}$ " square, including the seam allowances.



Make 64 quarter-block units,
 $7\frac{1}{2}$ " x $7\frac{1}{2}$ ".

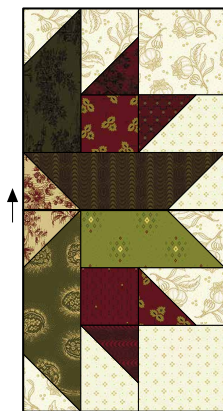
ASSEMBLING the Wreath Blocks and the Half-Wreath Blocks

- 1 Lay out four wreath quarter-block units in two horizontal rows as shown. Join the units in each row. Press. Join the rows. Press. Repeat to piece a total of 14 Wreath blocks measuring $14\frac{1}{2}"$ square, including the seam allowances.



Make 14 Wreath blocks,
 $14\frac{1}{2}" \times 14\frac{1}{2}"$.

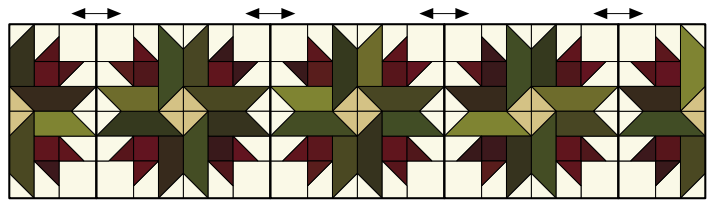
- 2 Join two quarter-block units as shown to make a Half-Wreath block. Press. Repeat to piece a total of four Half-Wreath blocks measuring $7\frac{1}{2}" \times 14\frac{1}{2}"$, including the seam allowances.



Make 4 Half-Wreath blocks,
 $7\frac{1}{2}" \times 14\frac{1}{2}"$.

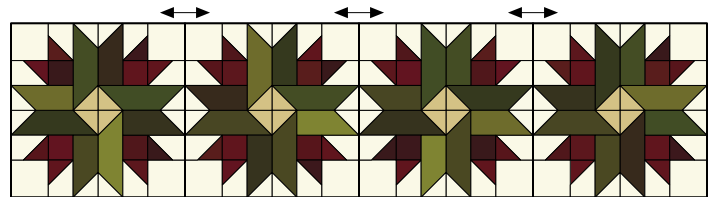
PIECING the Quilt Top

- 1 Lay out three Wreath blocks and two Half-Wreath blocks as shown. Join the blocks. Press. Repeat to piece two Half-Wreath block rows measuring $14\frac{1}{2}" \times 56\frac{1}{2}"$, including the seam allowances.



Make 2 Half-Wreath block rows,
 $14\frac{1}{2}" \times 56\frac{1}{2}"$.

- 2 Lay out and join four Wreath blocks. Press. Repeat to piece two Wreath block rows measuring $14\frac{1}{2}" \times 56\frac{1}{2}"$, including the seam allowances.



Make 2 Wreath block rows,
 $14\frac{1}{2}" \times 56\frac{1}{2}"$.

- 3 Referring to the quilt pictured on the handout cover, lay out the Half-Wreath block rows from step 1, the Wreath block rows from step 2, and the previously pieced bow unit to form the quilt top design. Join the rows. Press the seam allowances of the rows bordering the bow unit toward the bow unit. Press the seam allowances of the remaining row open.

COMPLETING the Quilt

Layer and baste the quilt top, batting, and backing. Quilt the layers. Join the red stylized floral binding strips to make one length and use it to bind the quilt.

Every effort has been made to ensure that all projects are error free. All the information is presented in good faith, however no warranty can be given nor results guaranteed as we have no control over the execution of instructions. Therefore, we assume no responsibility for the use of this information or damages that may occur as a result. When errors are brought to our attention, we make every effort to correct and post a revision as soon as possible. Please make sure to check www.henryglassfabrics.com for pattern updates prior to starting the project. We also recommend that you test the project prior to cutting for kits. Finally, all free projects are intended to remain free to you and are not for resale or other forms of distribution.

 **Henry Glass & Co., Inc.**

©2021 Kim Diehl

Farmhouse Christmas Fabrics in the Collection



9668-66
Green Toile



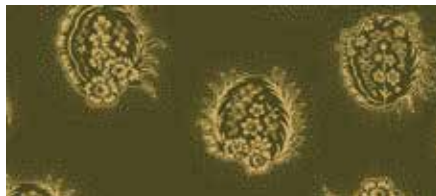
9668-88
Red Toile



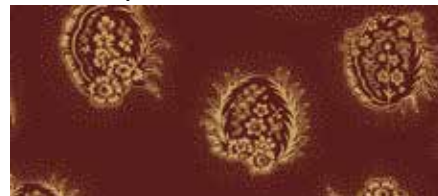
9669-66
Green Holly



9670-66
Green Vines and Red Flowers



9671-66
Green Cameo



9671-88
Red Cameo



9672-66
Green Moire Stripe



9672-88
Red Moire Stripe



9673-88
Red Mini Hexie Allover



9674-66
Green Delicate Paisley



9674-88
Red Delicate Paisley



9675-66
Green Geometric



9675-88
Red Geometric



9676-66
Green Stylized Floral



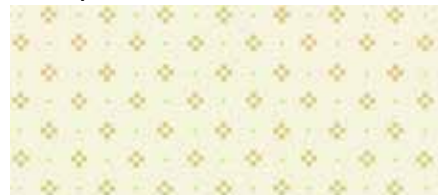
9676-88
Red Stylized Floral



9677-66
Green Tonal Diamond Clusters



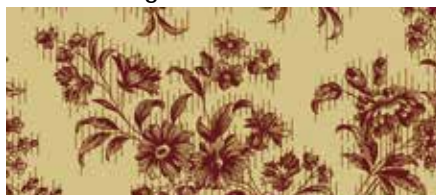
9678-40
Cream Pomegranate



9679-40
Cream Nine Patch



9680-88
Red Tiny Diamond Rows



9681-44
Tan Red Delicate Floral



9682-88
Red Three Leaf Clusters