

Stitch-Along Program
Esther's Bloomers
by Kim Diehl



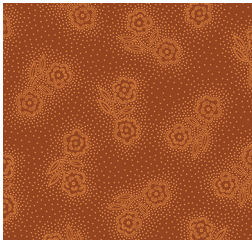
Esther's Heirloom Shirtings Collection

Six-part series ♦ Finished quilt size: 70½" x 70½"

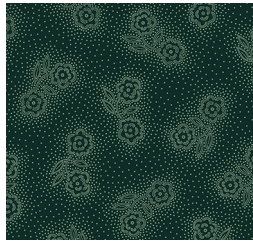


Henry Glass & Co., Inc.

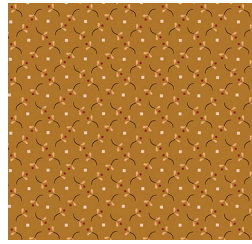
Esther's Heirloom Shirtings & Fabrics in the Collection



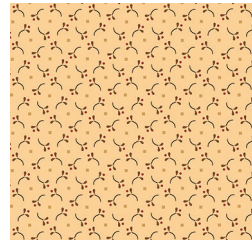
1597-30
Double Daisies, Orange



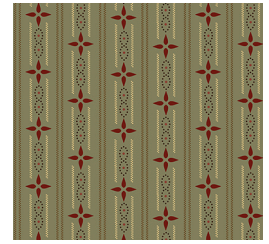
1597-77
Double Daisies, Blue



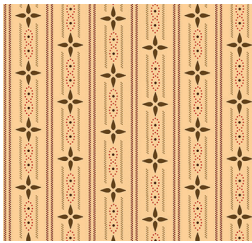
1598-40
Berry Sprigs, Gold



1598-44
Berry Sprigs, Cream



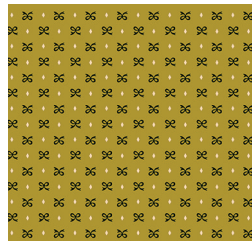
1599-11
Wallpaper Stripe, Aqua



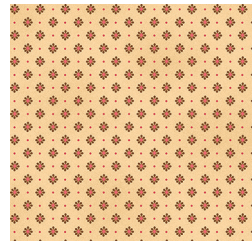
1599-44
Wallpaper Stripe, Cream



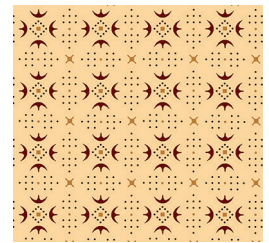
1600-33
Garden Bramble, Brown



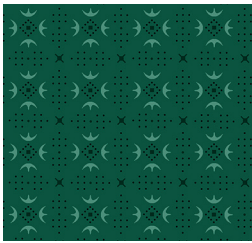
1601-66
Tiny Bows, Green



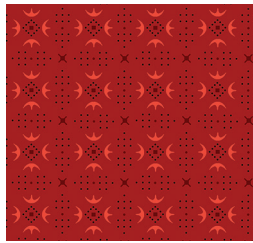
1602-44
Fancy Diamonds, Cream



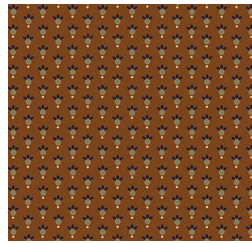
1603-44
Turkey Tracks, Cream



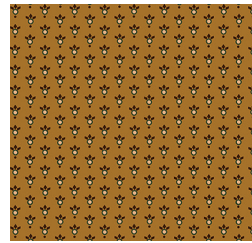
1603-77
Turkey Tracks, Teal



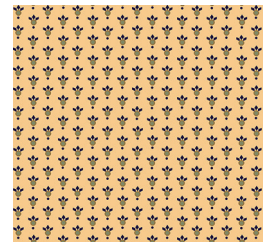
1603-88
Turkey Tracks, Red



1604-33
Leafy Rings, Chestnut



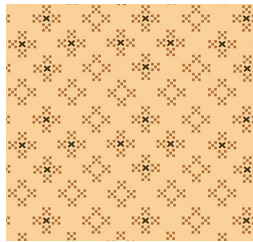
1604-40
Leafy Rings, Gold



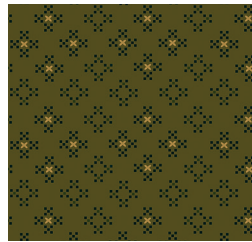
1604-44
Leafy Rings, Cream



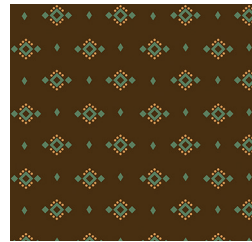
1605-22
Vintage Paisley, Plnk



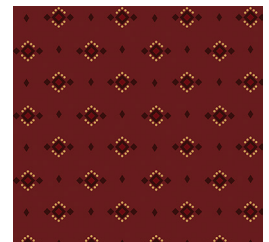
1606-44
Nine-Patch Clusters, Cream



1606-66
Nine-Patch Clusters, Green



1607-33
Dotted Diamonds, Brown



1607-88
Dotted Diamonds, Wine



1608-11
Crescents, Aqua



1608-44
Crescents, Cream



1609-66
Floral Sprays, Green



1609-88
Floral Sprays, Bright Pink



1610-22
Mini Pomegranate Vine, Pink



1610-44
Mini Pomegranate Vine, Cream



1683-88
Tossed Leaves, Red



1683-99
Tossed Leaves, Black



1684-30
Birds and Toile, Orange

