

ESTHER'S BLOOMERS

Yardage Summary – Finished quilt size; 70 1/2" x 70 1/2"

Six-Part Stitch-Along Program Featuring Kim Diehl's *Esther's Heirloom Shirtings* Collection

Yardage requirements for one complete quilt (including binding) are itemized below, and have been rounded up to the nearest 1/8 yard increment. Backing requirement is not included. Yardage amounts are for ordering purposes only; refer to the "Installment Yardage Guidelines" document when planning monthly installments.

Please use the individual project installment directions when cutting and preparing kits.

Pre-cut sizes are as follows:

Fat Quarters – 18" x 21" ♦ Fat 8ths – 9" x 21" ♦ Chubby 16ths – 9" x 10 1/2" ♦ Charm Squares – 5" x 5"



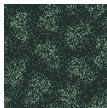
1597-30 ♦ 1/2 yard



1603-77 ♦ 1/2 yard



1608-11 ♦ 1/2 yard



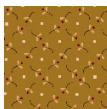
1597-77 ♦ 1/2 yard



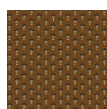
1603-88 ♦ 1/2 yard



1608-44 ♦ 3/4 yard



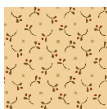
1598-40 ♦ 1/2 yard



1604-33 ♦ 7/8 yard



1609-66 ♦ 1/2 yard



1598-44 ♦ 3/4 yard



1604-40 ♦ 1/2 yard



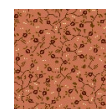
1609-88 ♦ 1/2 yard



1599-11 ♦ 1/2 yard



1604-44 ♦ 3/4 yard



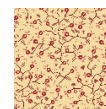
1610-22 ♦ 1/2 yard



1599-44 ♦ 3/4 yard



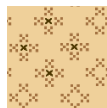
1605-22 ♦ 1/2 yard



1610-44 ♦ 3/4 yard



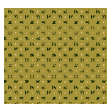
1600-33 ♦ 1/2 yard



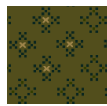
1606-44 ♦ 3/4 yard



1683-88 ♦ 1/2 yard



1601-66 ♦ 1/2 yard



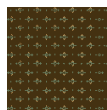
1606-66 ♦ 1/2 yard



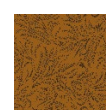
1683-99 ♦ 1/4 yard



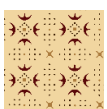
1602-44 ♦ 3/4 yard



1607-33 ♦ 3 7/8 yards



1684-30 ♦ 1/2 yard



1603-44 ♦ 3/4 yard



1607-88 ♦ 1/2 yard

