

Ebony & Onyx Star Garland

by Kim Diehl



Finished Quilt Size: 70½" x 72½"
A Free Project Sheet from

 Henry Glass & Co., Inc.



49 West 37th Street, New York, NY 10018
tel: 212-686-5194 • fax: 212-532-3525
Toll-free: 800-294-9495
www.henryglassfabrics.net

[facebook](#)

Ebony & Onyx Star Garland

Finished quilt size: 70½" x 72½"

PROJECT NOTES

The black background prints are from Kim's *Ebony & Onyx* collection, shown on the swatch page at the end of this handout. The Star blocks feature one light and one dark print in each of six chosen colors (aqua, pink, gold, orange, green, and gray), using prints from Kim's *Right as Rain* collection.

MATERIALS

Yardages are based on a 42" width of useable fabric after prewashing and removing selvages.

½ yard each of 12 assorted black prints for block background patchwork and sashing pieces
6 fat quarters of assorted light prints for star point patchwork and binding
6 fat quarters of assorted dark prints in matching colors for star center patchwork and binding
4¾ yards of print for backing
77" x 79" rectangle of batting
Standard sewing and quiltmaking supplies

CUTTING

Cut all pieces across the width of the fabric in the order given unless otherwise noted.

From each of the 12 assorted black prints, cut:

1 strip, 4½" x 42"; from this strip, cut:
2 rectangles, 4½" x 12½" (combined total of 24)
2 rectangles, 3½" x 6½" (combined total of 24)
1 square, 3½" x 3½" (combined total of 12)

Keep the pieces organized by size into sets.

1 strip, 3½" x 42"; crosscut into:
4 rectangles, 3½" x 6½" (combined total of 48, grand total of 72 with previously cut rectangles)
4 squares, 3½" x 3½" (combined total of 48, grand total of 60 with previously cut squares)

Keep the pieces organized by size, adding them to the previously cut sets. Reserve the remainder of the 12 assorted black prints.

From the reserved remainder of the 12 assorted black prints, cut a combined total of:

18 rectangles, 6½" x 12½"

16 squares, 6½" x 6½"

6 squares, 3½" x 3½"

Again, organize the pieces by size, adding the 3½" squares into the previously cut set.

From each of the 6 fat quarters of assorted light prints, cut:

5 strips, 3½" x 21"; crosscut into 24 squares, 3½" x 3½"
(combined total of 144)

Organize the squares by print into 6 star-point patchwork sets. Reserve the remainder of assorted light prints for use in the binding.

From each of the 6 fat quarters of assorted dark prints, cut:

3 strips, 3½" x 2"; crosscut into 12 squares, 3½" x 3½"
(combined total of 72)

Organize the squares by print into 6 star-center patchwork sets. Reserve the remainder of assorted dark prints for use in the binding.

From the reserved remainder of the 6 assorted light and 6 assorted dark prints, cut:

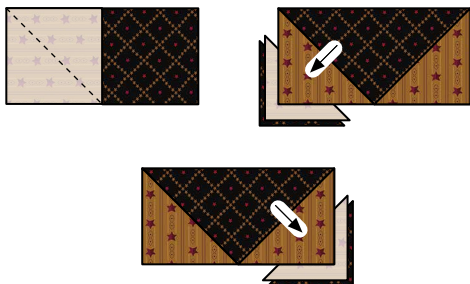
Enough 2½"-wide strips in random lengths to make a 296" length of binding when joined together end to end.

PIECING THE STAR BLOCKS

Sew all pieces with right sides together and a ¼" seam allowance unless otherwise noted. Press the seam allowances as indicated by the arrows or otherwise specified.

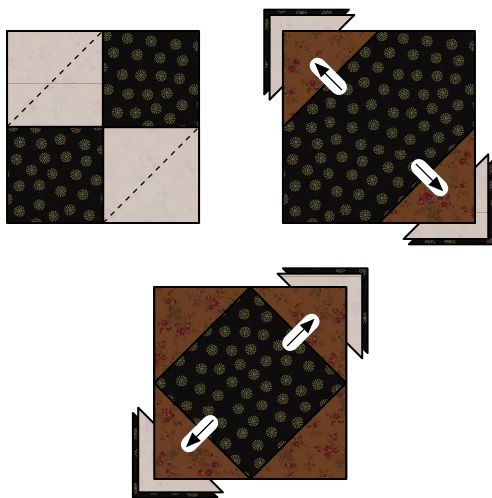
- 1 Select one star-point patchwork set and one star-center patchwork set in coordinating colors. Choosing the prints randomly, from the black patchwork sets select three black squares, 6½" x 6½", 12 black rectangles, 3½" x 6½", and 12 black squares, 3½" x 3½". Last, select three black rectangles, 6½" x 12½".
- 2 Use a pencil and an acrylic ruler to draw a diagonal sewing line from corner to corner on the wrong side of each of the 24 light print 3½" squares, and each of the 12 dark print 3½" squares.

- 3 Layer a prepared light print $3\frac{1}{2}$ " square onto one end of an assorted black print $3\frac{1}{2}$ " x $6\frac{1}{2}$ " rectangle as shown. Stitch the pair along the drawn diagonal line. Fold the resulting inner triangle open, aligning the corner with the corner of the black rectangle. Press. Trim away the layers beneath the top triangle, leaving a $\frac{1}{4}$ " seam allowance. In the same manner, add a mirror-image triangle to the remaining end of the black rectangle. Repeat to piece a total of 12 star-point units measuring $3\frac{1}{2}$ " x $6\frac{1}{2}$ ", including the seam allowances.



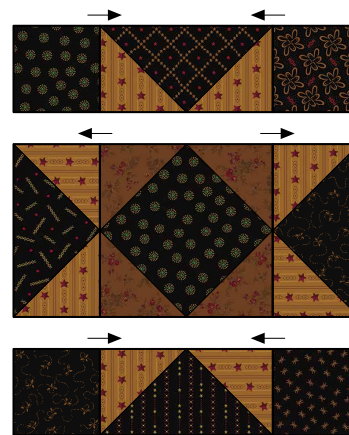
Make 12 star-point units,
 $3\frac{1}{2}$ x $6\frac{1}{2}$ ".

- 4 Using the prepared dark print $3\frac{1}{2}$ " squares and the three assorted black print $6\frac{1}{2}$ " squares, use step 3 as a guide to stitch three star-center units measuring $6\frac{1}{2}$ " square, including the seam allowances.



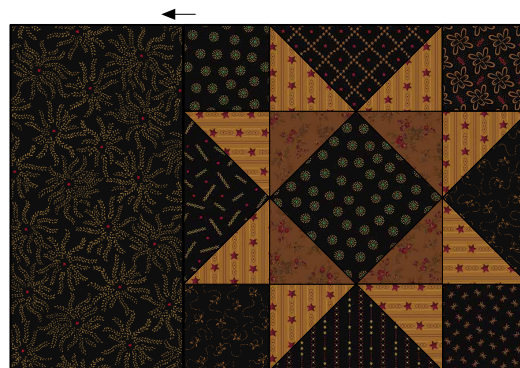
Make 3 star-center units,
 $6\frac{1}{2}$ x $6\frac{1}{2}$ ".

- 5 Lay out one star-center unit, four star-point units from step 3, and four assorted black print $3\frac{1}{2}$ " squares in three horizontal rows as shown. Join the pieces in each row. Press. Join the rows. Press. Repeat to piece three star units measuring $12\frac{1}{2}$ " square, including the seam allowances.



Make 3 star units,
 $12\frac{1}{2}$ x $12\frac{1}{2}$ ".

- 6 Join a black print $6\frac{1}{2}$ " x $12\frac{1}{2}$ " rectangle to one side of a pieced star unit. Press. Repeat to complete a total of three Star blocks measuring $12\frac{1}{2}$ " x $18\frac{1}{2}$ ", including the seam allowances.

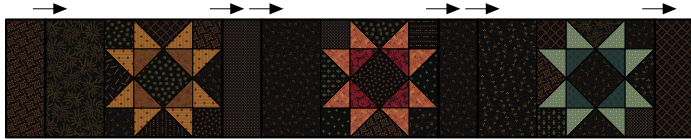


Make 3 Star blocks in each colorway,
 $12\frac{1}{2}$ x $18\frac{1}{2}$ ", for a total of 18 blocks.

- 7 Repeat steps 1–6 to piece a total of 18 Star blocks, with three blocks stitched in each of the six colorways.

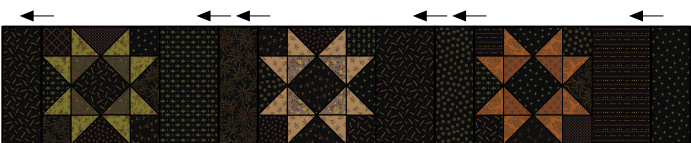
PIECING THE QUILT TOP

- ① Referring to the illustration and choosing the Star block colors randomly, lay out three Star Blocks and four assorted black print $4\frac{1}{2}$ " x $12\frac{1}{2}$ " rectangles in alternating positions. Join the pieces. Press. Repeat to piece a total of three A rows measuring $12\frac{1}{2}$ " x $70\frac{1}{2}$ ", including the seam allowances.



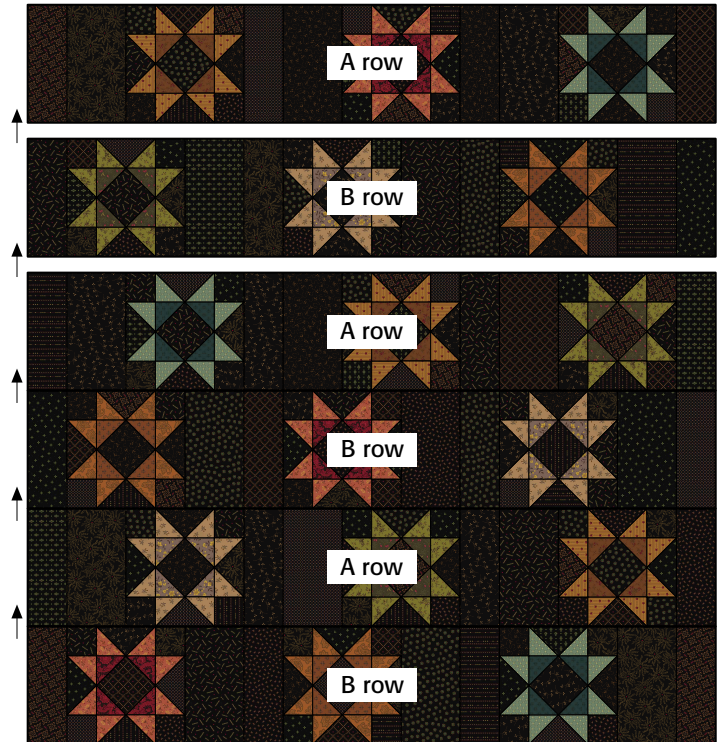
Make 3 A rows,
 $12\frac{1}{2}$ " x $18\frac{1}{2}$ ".

- ② Again referring to the illustration and choosing the Star block colors randomly, lay out three Star blocks (rotating them to rest in the opposite direction of the blocks in the A rows) and four assorted black print $4\frac{1}{2}$ " x $12\frac{1}{2}$ " rectangles in alternating positions. Join the pieces. Press. Repeat to piece a total of three B rows measuring $12\frac{1}{2}$ " x $70\frac{1}{2}$ ", including the seam allowances.



Make 3 B rows,
 $12\frac{1}{2}$ " x $18\frac{1}{2}$ ".

- ③ Referring to the assembly diagram, lay out the A and B rows in alternating positions. Join the rows. Press.



COMPLETING THE QUILT

Layer and baste the quilt top, batting, and backing. Quilt the layers. Join the $2\frac{1}{2}$ "-wide random lengths of assorted prints to make a 296" length of binding and use it to bind the quilt.

Every effort has been made to ensure that all projects are error free. All the information is presented in good faith, however no warranty can be given nor results guaranteed as we have no control over the execution of instructions. Therefore, we assume no responsibility for the use of this information or damages that may occur as a result. When errors are brought to our attention, we make every effort to correct and post a revision as soon as possible. Please make sure to check www.henryglassfabrics.com for pattern updates prior to starting the project. We also recommend that you test the project prior to cutting for kits. Finally, all free projects are intended to remain free to you and are not for resale.

Ebony & Onyx Basics

Fabrics in the Collection



6986-99



6987-99



6988-99



6989-99



6990-99



6991-99



6992-99



6993-99



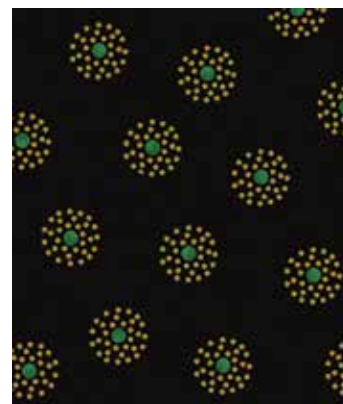
6994-99



6995-99



6996-99



6997-99