

Down by the Veggie Patch



• A Free Project Sheet •
• NOT FOR RESALE •

By Anni Downs

Runner Design by Anni Downs



Quilt 3

Skill Level: Advanced Beginner



Henry Glass & Co., Inc.



facebook

Finished Runner Size: 40" x 16"
49 West 37th Street, New York, NY 10018
tel: 212-686-5194 fax: 212-532-3525
Toll Free: 800-294-9495
www.henryglassfabrics.net

Finished Runner Size: 40" x 16"

DOWN BY THE VEGGIE PATCH

Quilt 3

Fabrics in the Collection



Veggie Patch Panel - Cream
2248P-44



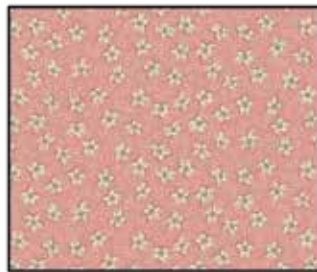
Bunny Toss - Khaki
2249-33



Bunny Toss - Cream
2249-44



Bunny Toss - Blue
2249-76



Large Flower - Pink
2250-22



Large Flower - Green
2250-66



Large Flower - Blue
2250-76



Mushrooms - Pink
2251-22



Mushrooms - Cream
2251-44



Mushrooms - Blue
2251-76



Small Flower - Cream
2252-44



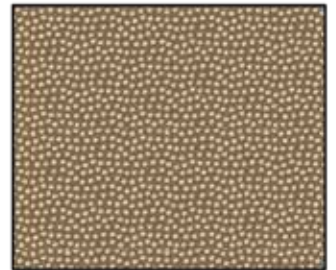
Small Flower - Light Blue
2252-70



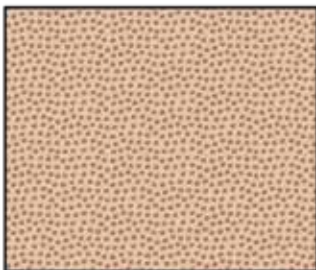
Small Flower - Dark Blue
2252-77



Spots - Cocoa
2253-34



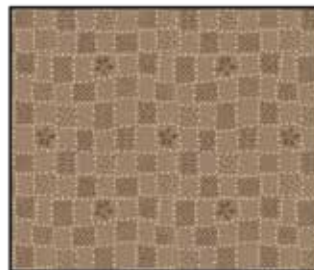
Spots - Brown
2253-38



Spots - Cream
2253-44



Square Patch - Cream
2254-33



Square Patch - Brown
2254-38



Square Patch - Blue
2254-77

DOWN BY THE VEGGIE PATCH

Page 1

Quilt 3

Materials

¼ yard	Bunny Toss - Khaki (A)	2249-33
⅛ yard	Small Flower - Light Blue (B)	2252-70
¼ yard	Square Patch - Cream (C)	2254-33
½ yard	Spots - Cocoa (D)	2253-34*
¼ yard	Mushrooms - Cream (E)	2251-44
⅛ yard	Mushrooms - Pink (F)	2251-22
¼ yard	Bunny Toss - Cream (G)	2249-44
¼ yard	Mushrooms - Blue (H)	2251-76
¼ yard	Spots - Cream (I)	2253-44
⅛ yard	Square Patch - Brown (J)	2254-38
¼ yard	Bunny Toss - Blue (K)	2249-76
⅛ yard	Large Flower - Green (L)	2250-66
⅛ yard	Small Flower - Cream (M)	2252-44
⅛ yard	Spots - Brown (N)	2253-38
⅛ yard	Square Patch - Blue (O)	2254-77
½ yard	Large Flower - Blue (P)	2250-76
⅛ yard	Large Flower - Pink (Q)	2250-22
⅛ yard	Small Flower - Dark Blue (R)	2252-77
1 ½ yards	Bunny Toss - Cream (Backing)	2249-44

*Includes binding

Cutting Instructions

Please note: all strips are cut across the width of fabric (WOF) from selvage to selvage unless otherwise noted.

From the Bunny Toss - Khaki (A), cut:

- (1) 4 ½" x WOF strip. Sub-cut (3) 4 ½" squares.

From the Small Flower - Light Blue (B), cut:

- (1) 2 ½" x WOF strip. Sub-cut (10) 2 ½" squares.

From the Square Patch - Cream (C), cut:

- (1) 4 ½" x WOF strip. Sub-cut (2) 4 ½" squares and (4) 2 ½" squares.

From the Spots - Cocoa (D), cut:

- (1) 2 ½" x WOF strip. Sub-cut (10) 2 ½" squares.
- (3) 2 ½" x WOF strips for the binding.

From the Mushrooms - Cream (E), cut:

- (1) 4 ½" x WOF strip. Sub-cut (2) 4 ½" squares and (2) 2 ½" squares.

From the Mushrooms - Pink (F), cut:

- (1) 2 ½" x WOF strip. Sub-cut (10) 2 ½" squares.

From the Bunny Toss - Cream (G), cut:

- (1) 4 ½" x WOF strip. Sub-cut (3) 4 ½" squares.

From the Mushrooms - Blue (H), cut:

- (1) 4 ½" square.
- (1) 2 ½" x WOF strip. Sub-cut (13) 2 ½" squares.

From the Spots - Cream (I), cut:

- (1) 4 ½" x WOF strip. Sub-cut (2) 4 ½" squares and (2) 2 ½" squares.

From the Square Patch - Brown (J), cut:

- (1) 2 ½" x WOF strip. Sub-cut (11) 2 ½" squares.

From the Bunny Toss - Blue (K), cut:

- (1) 4 ½" x WOF strip. Sub-cut (1) 4 ½" square and (2) 2 ½" squares.

From the Large Flower - Green (L), cut:

- (1) 2 ½" x WOF strip. Sub-cut (5) 2 ½" squares.

From the Small Flower - Cream (M), cut:

- (1) 2 ½" x WOF strip. Sub-cut (5) 2 ½" squares.

From the Spots - Brown (N), cut:

- (1) 2 ½" x WOF strip. Sub-cut (4) 2 ½" squares.

From the Square Patch - Blue (O), cut:

- (1) 2 ½" x WOF strip. Sub-cut (4) 2 ½" squares.

From the Large Flower - Blue (P), cut:

- (1) 2 ½" x WOF strip. Sub-cut (4) 2 ½" squares and (2) 2 ½" x 12 ½" strips.
- (2) 2 ½" x 40 ½" WOF strips.

From the Large Flower - Pink (Q), cut:

- (1) 2 ½" x WOF strip. Sub-cut (2) 2 ½" squares.

From the Small Flower - Dark Blue (R), cut:

- (1) 2 ½" x WOF strip. Sub-cut (4) 2 ½" squares.

From the Bunny Toss - Cream (Backing), cut:

- (1) 24" x 48" strip for the backing.

Sewing Instructions

1. Place (1) 2 ½" Fabric B square on the top left corner of (1) 4 ½" Fabric A square, right sides together (Fig. 1). Sew across the diagonal of the smaller square from the upper right corner to the lower left corner (Fig. 1). Flip open the triangle formed and press (Fig. 2). Trim away the excess fabric from behind the triangle ¼" away from the sewn seam.
2. Follow Figure 3 for the seam direction to add a 2 ½" Fabric B square to each of the remaining corners of the 4 ½" Fabric A square to make (1) Unit 1 square (Fig. 4).
3. Repeat Steps 1-2 to make a second Unit 1 square.

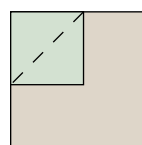


Fig. 1

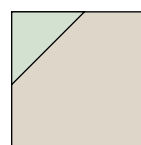


Fig. 2

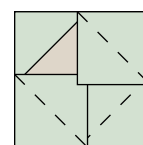


Fig. 3

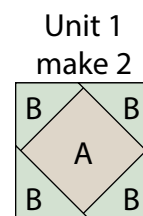


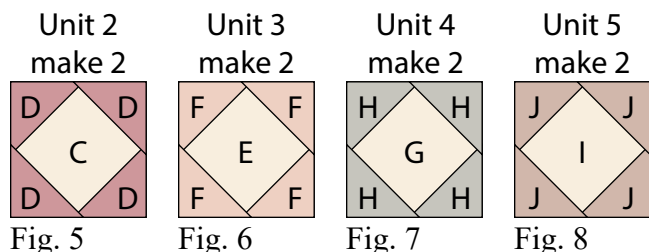
Fig. 4

DOWN BY THE VEGGIE PATCH

Page 2

Quilt 3

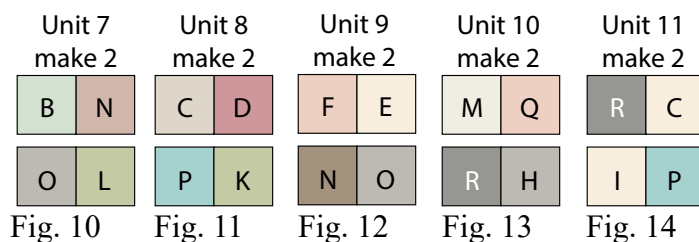
4. Repeat Steps 1-2 and use Figures 5-8 for fabric identification, location and seam direction to make (2) Unit 2 squares, (2) Unit 3 squares, (2) Unit 4 squares and (2) Unit 5 squares.



5. Sew (1) 2 1/2" Fabric L square to the left side of (1) 2 1/2" Fabric H square to make the top row. Sew (1) 2 1/2" Fabric J square to the left side of (1) 2 1/2" Fabric M square to make the bottom row. Sew the (2) rows together to make (1) Unit 6 square (Fig. 9). Repeat to make (3) Unit 6 squares total.



6. Repeat Step 5 and use Figures 10-14 for fabric identification and location to make (2) Unit 7 squares, (2) Unit 8 squares, (2) Unit 9 squares, (2) Unit 10 squares and (2) Unit 11 squares.



Runner Top Assembly

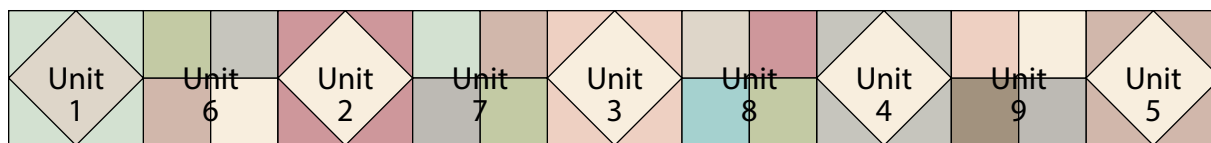
(Refer to the Runner Layout while assembling.)

7. Sew (1) Unit 1 square, (1) Unit 6 square, (1) Unit 2 square, (1) Unit 7 square, (1) Unit 3 square, (1) Unit 8 square, (1) Unit 4 square, (1) Unit 9 square and (1) Unit 5 square together in that order to make Row One (Fig. 15).

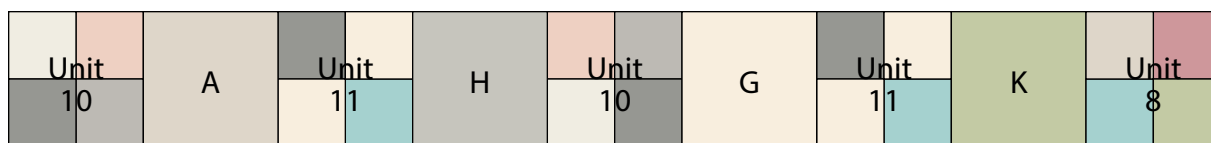
8. Sew (1) Unit 10 square, (1) 4 1/2" Fabric A square, (1) Unit 11 square, (1) 4 1/2" Fabric H square, (1) Unit 10 square, (1) 4 1/2" Fabric G square, (1) Unit 11 square, (1) 4 1/2" Fabric K square and (1) Unit 8 square together to make Row Two (Fig. 16).

9. Sew (1) Unit 5 square, (1) Unit 9 square, (1) Unit 1 square, (1) Unit 6 square, (1) Unit 3 square, (1) Unit 7 square, (1) Unit 2 square, (1) Unit 6 square and (1) Unit 4 square together in that order to make Row Three (Fig. 17).

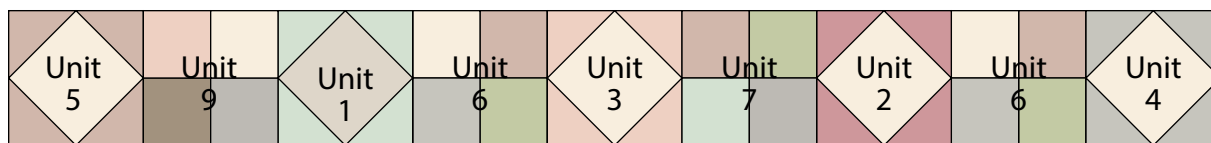
Row One



Row Two



Row Three



DOWN BY THE VEGGIE PATCH

Page 3

Quilt 3

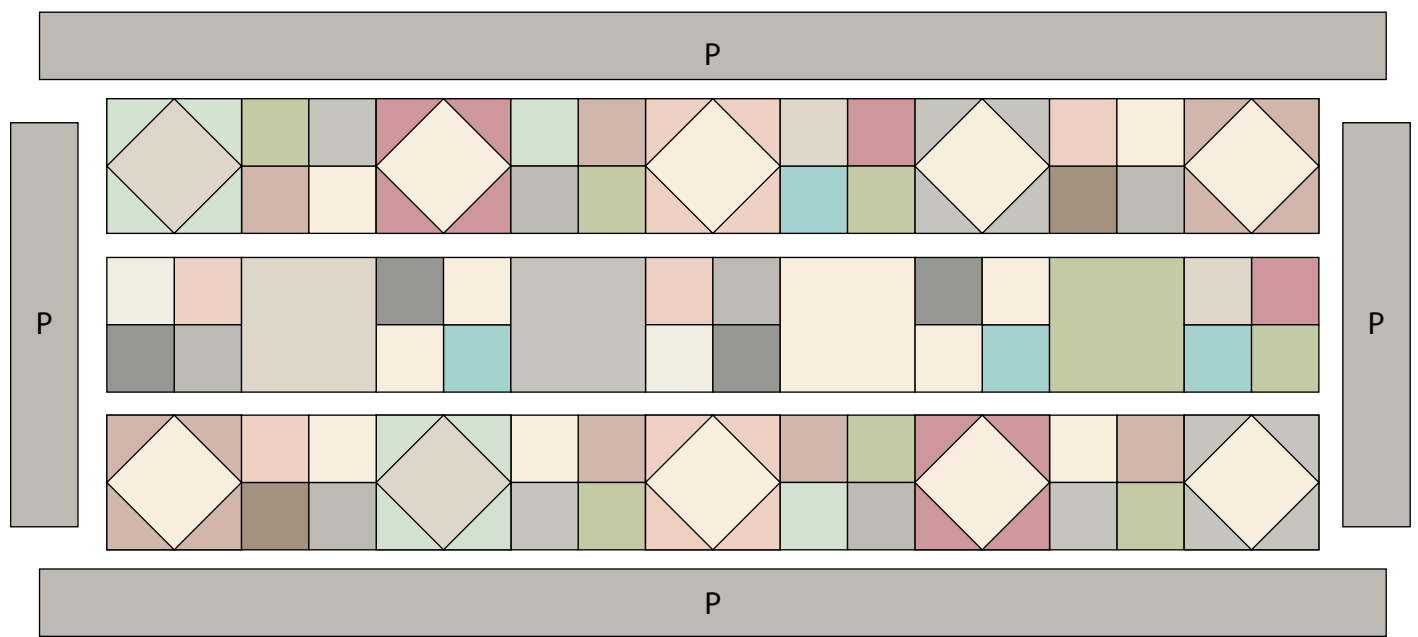
10. Sew the (3) rows together, in numerical order, to make the Center Block. Pay attention to the row orientations.

11. Sew (1) 2 ½" x 12 ½" Fabric P strip to each side of the Center Block. Sew (1) 2 ½" x 40 ½" Fabric P strip to the top and to the bottom of the Center Block to make the runner top.

12. Layer and quilt as desired.

13. Sew the (3) 2 ½" x WOF Fabric D strips together, end to end with 45-degree seams, to make the binding. Fold this long strip in half lengthwise with wrong sides together and press.

14. Bind as desired.



Runner Layout

Every effort has been made to ensure that all projects are error free. All the information is presented in good faith, however no warranty can be given nor results guaranteed as we have no control over the execution of instructions. Therefore, we assume no responsibility for the use of this information or damages that may occur as a result. When errors are brought to our attention, we make every effort to correct and post a revision as soon as possible. Please make sure to check www.henryglassfabrics.net for pattern updates prior to starting the project. We also recommend that you test the project prior to cutting for kits. Finally, all free projects are intended to remain free to you and are not for resale.

©2018 Henry Glass & Co., Inc.