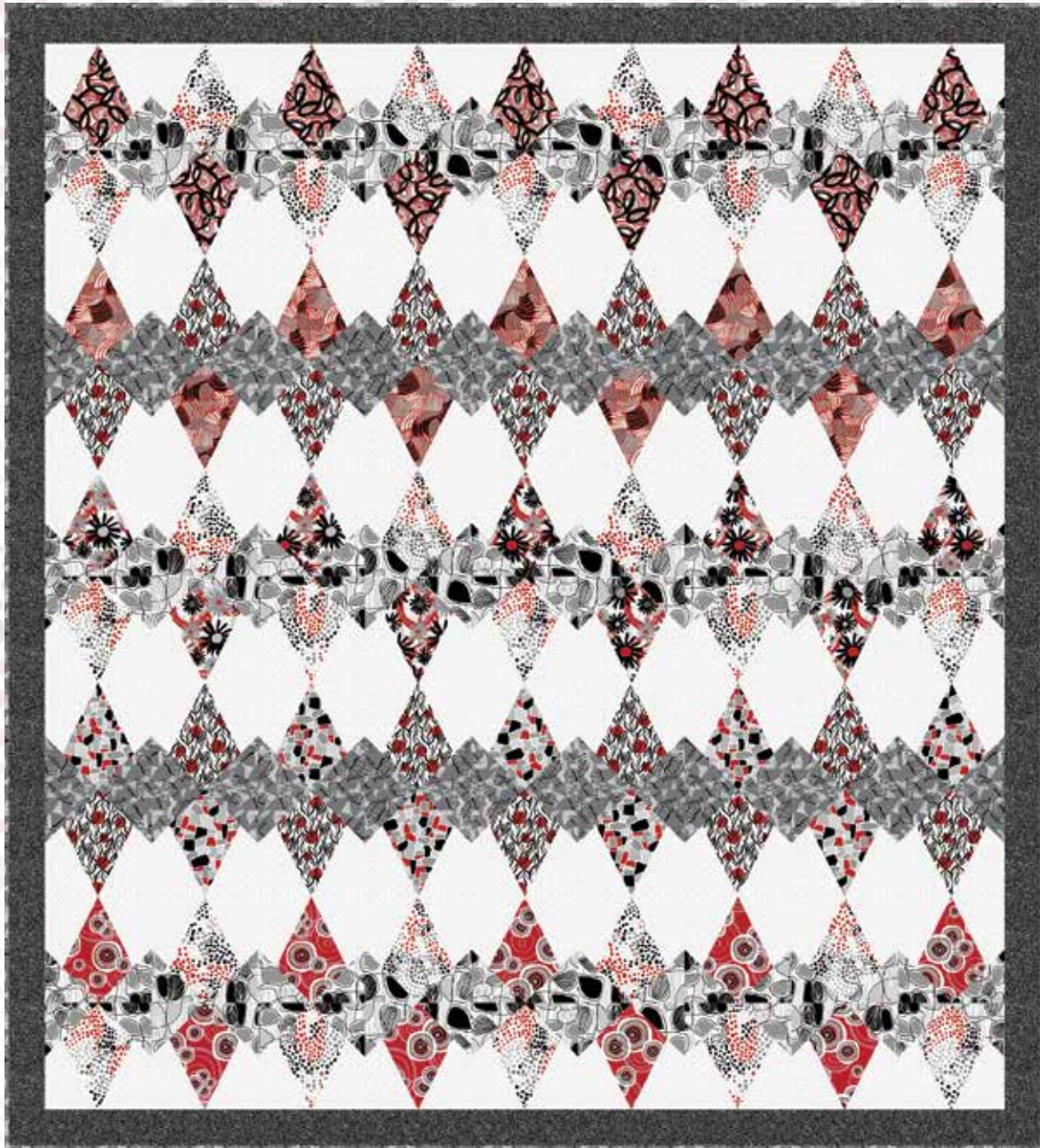


# Crimson Garden

• A Free Project Sheet •  
• NOT FOR RESALE •

*By Deborah Velasquez*



Quilt Design by Heidi Pridemore

Quilt 2

Skill Level: Intermediate

 Henry Glass & Co., Inc.



facebook

Finished Quilt Size: 58" x 64"  
(147.32 cm x 162.56 cm)

49 West 37th Street, New York, NY 10018

tel: 212-686-5194 fax: 212-532-3525

Toll Free: 800-294-9495

[www.henryglassfabrics.net](http://www.henryglassfabrics.net)

Please check our website for pattern updates before starting this project.



# CRIMSON GARDEN

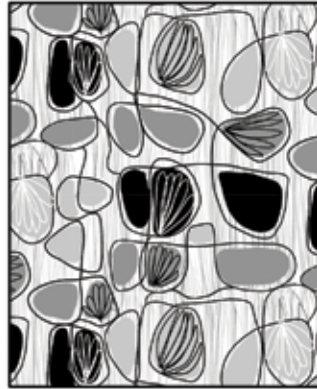
Quilt 2

Finished Quilt Size: 58" x 64"  
(147.32 cm x 162.56 cm)

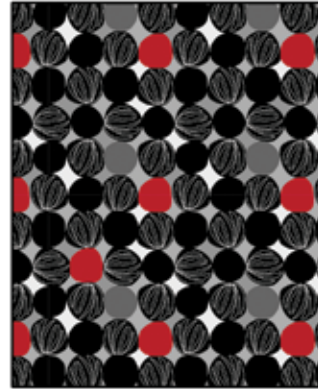
## Fabrics in the Collection



Swirls  
Red/Black – 1193-89



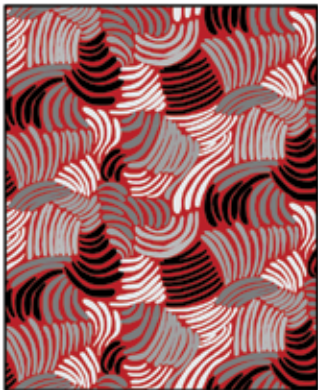
Abstract Ovals  
Gray – 1194-90



Touching Dots  
Black/Gray – 1195-98



Dot Sprays  
Multi – 1196-89



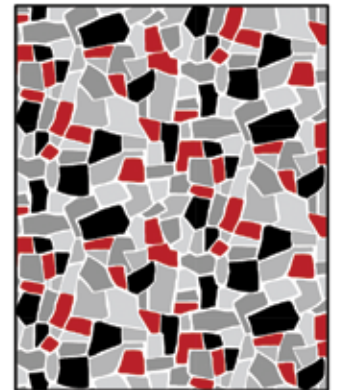
Abstract Lines  
Red/Gray – 1197-89



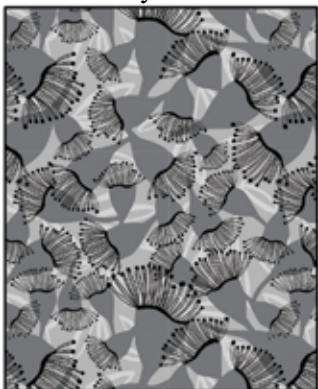
Fancy Daisies  
Multi – 1198-89



Vines and Berries  
Multi – 1199-09



Mosaic  
Multi – 1200-89



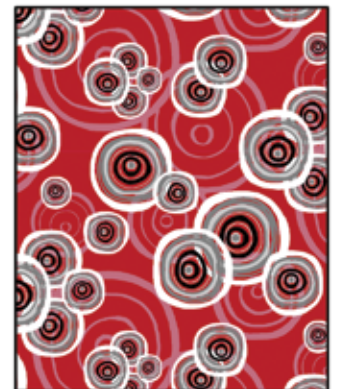
Eyelash Floral  
Gray – 1201-90



Dots and Small Vines  
Black/Red – 1202-98



Leaves  
Black/Gray – 1203-98



Circles in Circles  
Red – 1204-88

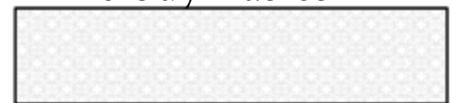
## Select Fabrics from Twinkle Basics & Modern Melody Basics



Twinkle  
Gray – 135-90



Twinkle  
Black – 135-99



Modern Melody Basics  
Pigment White – 1063-01W

## Quilt 2

### Materials

¼ yard (0.23m)	Swirls - Red/Black (A)	1193-89
2/3 yard (0.61m)	Dot Sprays - Multi (B)	1196-89
1 yard (0.92m)	Abstract Ovals - Gray (C)	1194-90
¼ yard (0.23m)	Abstract Lines - Red/Gray (D)	1197-89
½ yard (0.46m)	Dots & Small Vines - Black/Red (E)	1202-98
1 ¼ yards (1.15m)	Eyelash Floral - Gray (F)	1201-90*
¼ yard (0.23m)	Fancy Daisies - Multi (G)	1198-89
¼ yard (0.23m)	Mosaic - Multi (H)	1200-89
¼ yard (0.23m)	Circles in Circles - Red (I)	1204-88
2 yards (1.83m)	Modern Melody Basics - Pigment White (J)	1063-01W
⅝ yard (0.58m)	Twinkle Basics - Black (K)	135-99
2 yards (1.83m)**	Large Paisley - Gray (Backing)	1181-90

\*Includes binding

\*\*Fabric is 108" wide (274.32 cm)

### Cutting Instructions

Please note: All strips are cut across the width of fabric (WOF) from selvage to selvage edge unless otherwise noted.

#### From the Swirls - Red/Black (A), cut:

- (9) Template T-2 triangles.

#### From the Dot Sprays - Multi (B), cut:

- (27) Template T-2 triangles.

#### From the Abstract Ovals - Gray (C), cut:

- (9) 3 ½" x WOF strips. Sub-cut (108) 3 ½" squares.

#### From the Abstract Lines - Red/Gray (D), cut:

- (9) Template T-2 triangles.

#### From the Dots & Small Vines - Black/Red (E), cut:

- (18) Template T-2 triangles.

#### From the Eyelash Floral - Gray (F), cut:

- (6) 3 ½" x WOF strips. Sub-cut (72) 3 ½" squares.
- (7) 2 ½" x WOF strips for the binding.

#### From the Fancy Daisies - Multi (G), cut:

- (9) Template T-2 triangles.

#### From the Mosaic - Multi (H), cut:

- (9) Template T-2 triangles.

#### From the Circles in Circles - Red (I), cut:

- (9) Template T-2 triangles.

#### From the Modern Melody Basics - Pigment White (J), cut:

- (90) Template T-1 triangles.
- (90) Template T-3 triangles.

#### From the Twinkle Basics - Black (K), cut:

- (3) 2 ½" x WOF strips. Sew the strips together end to end with diagonal seams and cut (2) 2 ½" x 60 ½" strips.
- (3) 2 ½" x WOF strips. Sew the strips together end to end with diagonal seams and cut (2) 2 ½" x 58 ½" strips.

#### From the Large Paisley - Gray (Backing), cut:

- (1) 66" x 72" WOF strip for the backing.

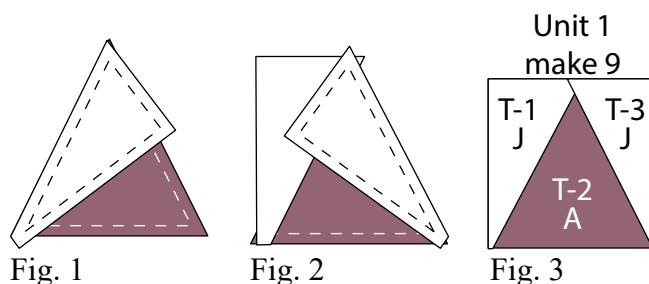
### Block Assembly

Note: Pay attention to the unit orientations when assembling the various components. Use a ¼" seam allowance with right sides together (RST) unless otherwise noted.

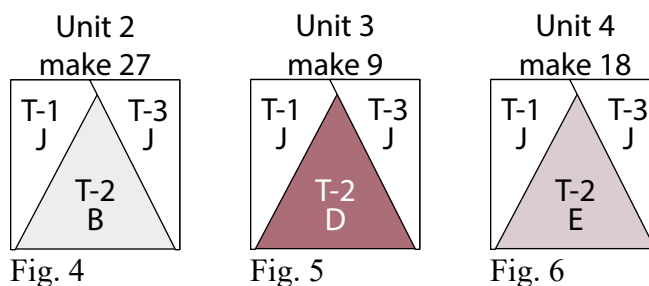
1. Place (1) Fabric J Template 1 triangle on top of (1) Fabric A Template 2 triangle, right sides together, aligning the left sides (Fig. 1). Sew the (2) triangles together along the left side. Press the smaller triangle open.

2. Place (1) Fabric J Template 3 triangle on top of the Fabric A Template 2 triangle, right sides together, aligning the right sides (Fig. 2). Sew the (2) triangles together along the right side. Press the smaller triangle open to make (1) Unit 1 square (Fig. 3). Trim the unit to measure 6 ½" square.

3. Repeat Steps 1-2 to make (9) Unit 1 squares total.



4. Repeat Steps 1-2 and refer to Figures 4-9 for fabric identification, placement and orientation to make the designated number of 6 ½" unit squares for Unit 2 through Unit 7. Note: There will be a total of (90) unit squares for Unit 1 through Unit 7.





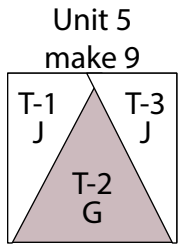


Fig. 7

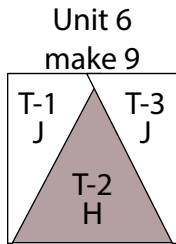


Fig. 8

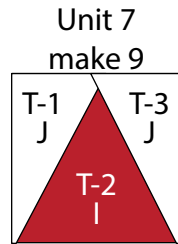


Fig. 9

5. Place (1) 3 1/2" Fabric C square on the bottom left corner of (1) Unit 1 square, right sides together (Fig. 10). Sew across the diagonal of the smaller square from the upper left corner to the lower right corner (Fig. 10). Flip open the triangle formed and press. Trim away the excess fabric from behind the triangle 1/4" away from the sewn seam (Fig. 11).

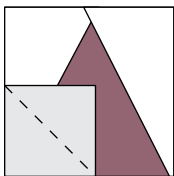


Fig. 10

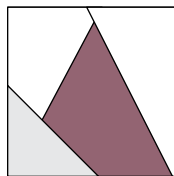


Fig. 11

6. Follow Figure 12 for the seam direction to add a 3 1/2" Fabric C square to the lower right corner of the Unit 1 square to make (1) 6 1/2" Block One square (Fig. 13).

7. Repeat Steps 5-6 to make (9) Block One squares total.

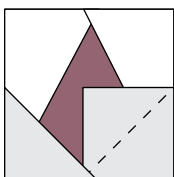


Fig. 12

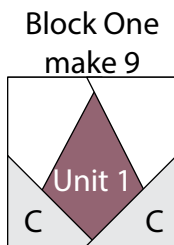


Fig. 13

8. Repeat Steps 5-6 and refer to Figures 14-19 for component identification, placement and seam direction to make the indicated number of block squares for Block Two through Block Seven. *Note: There will be a total of (90) block squares for Block One through Block Seven.*

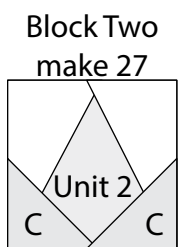


Fig. 14

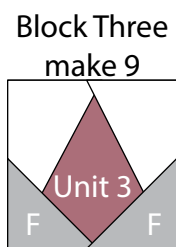


Fig. 15

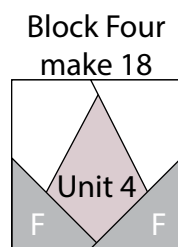


Fig. 16

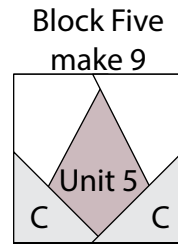


Fig. 17

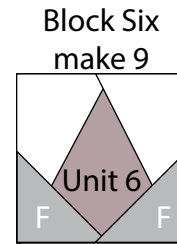


Fig. 18

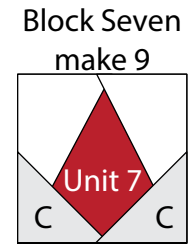


Fig. 19

9. Sew together (5) Block One squares and (4) Block Two squares, alternating them from left to right, to make Row One (Fig. 20).

10. Repeat Step 9 and refer to Figure 20 for component identification, placement and orientation to make Row Two through Row Ten.

11. Sew together the (10) pieced rows, lengthwise and in numerical order from the top to the bottom, to make the 54 1/2" x 60 1/2" Center Block (Fig. 20).

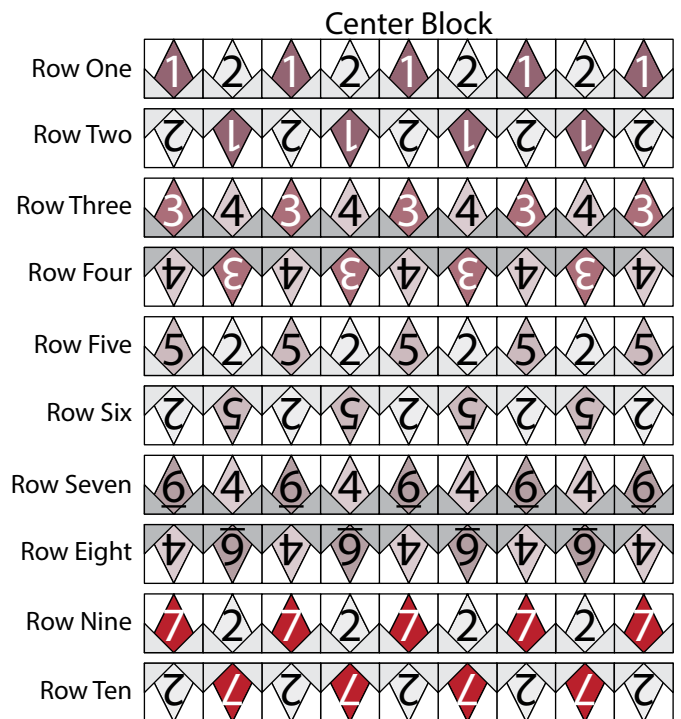


Fig. 20

# CRIMSON GARDEN

### Quilt 2

#### Quilt Top Assembly

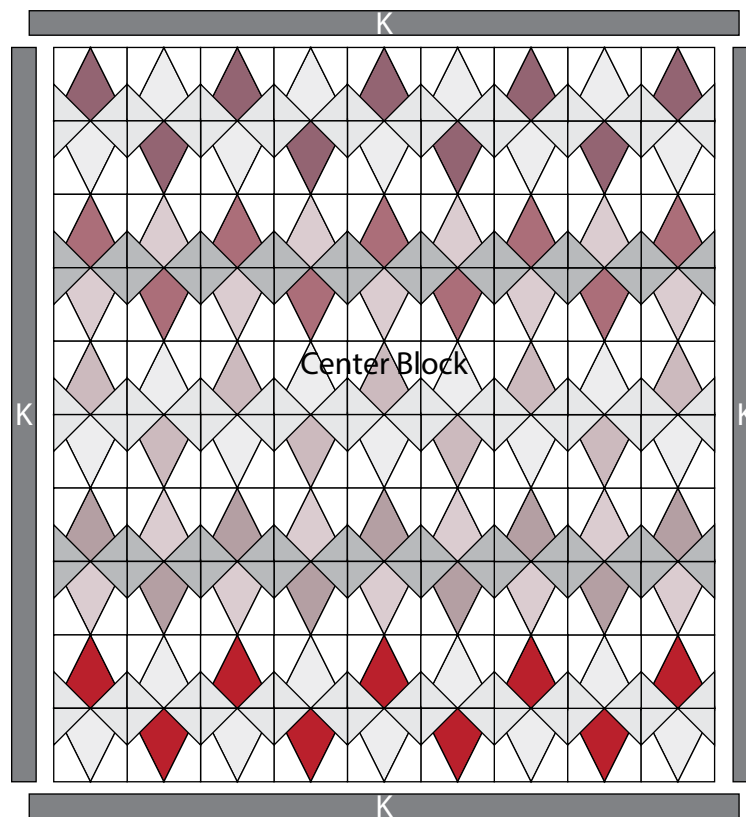
*(Follow the Quilt Layout while assembling the quilt top.)*

12. Sew (1) 2 1/2" x 60 1/2" Fabric K strip to each side of the Center Block. Sew (1) 2 1/2" x 58 1/2" Fabric K strip to the top and to the bottom of the Center Block to make the quilt top.

13. Layer and quilt as desired.

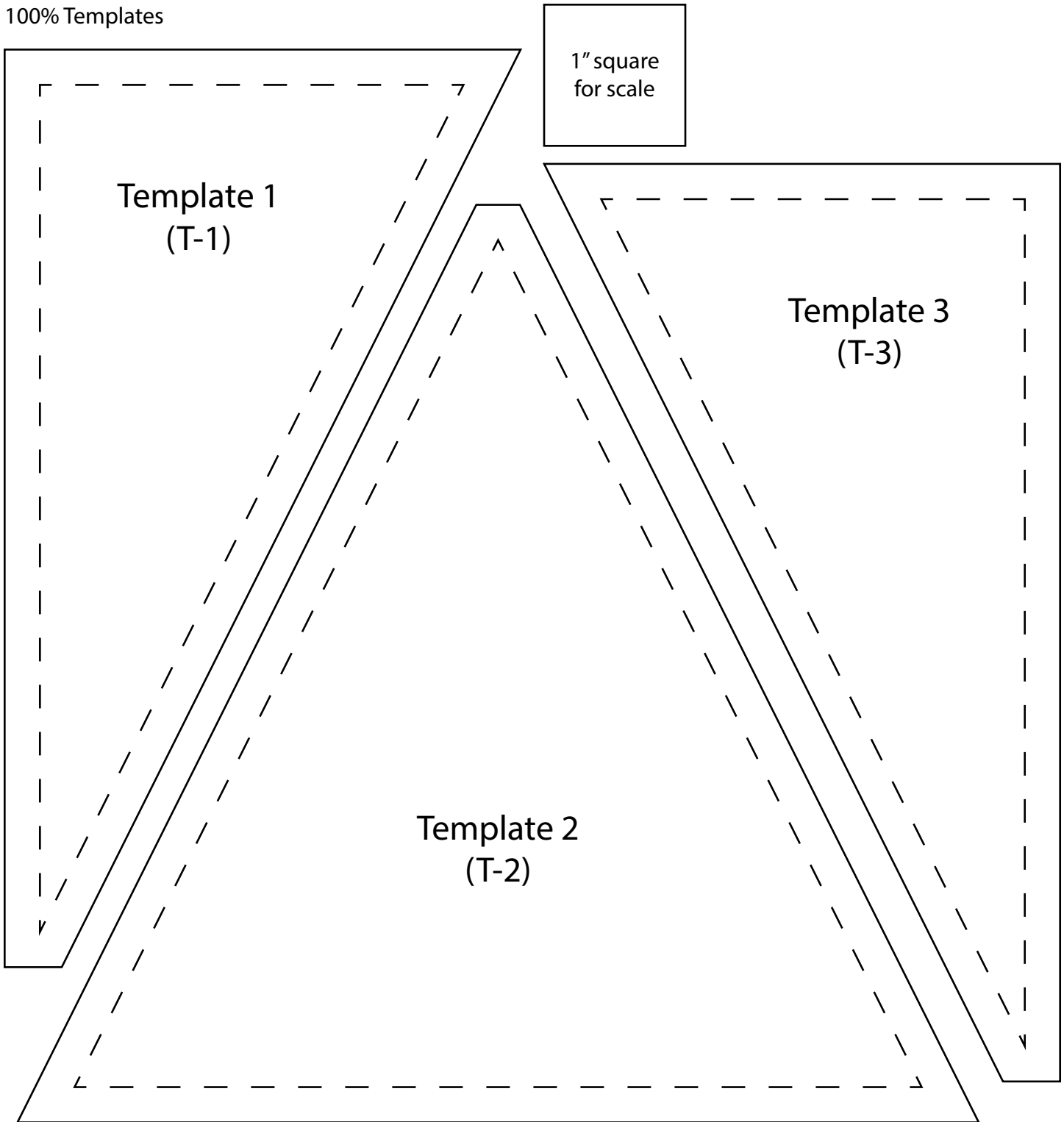
14. Sew the (7) 2 1/2" x WOF Fabric F strips together, end to end with 45-degree seams, to make the binding. Fold this long strip in half lengthwise with wrong sides together and press.

15. Bind as desired.



Quilt Layout

100% Templates



Every effort has been made to ensure that all projects are error free. All the information is presented in good faith, however no warranty can be given nor results guaranteed as we have no control over the execution of instructions. Therefore, we assume no responsibility for the use of this information or damages that may occur as a result. When errors are brought to our attention, we make every effort to correct and post a revision as soon as possible. Please make sure to check [www.henryglassfabrics.net](http://www.henryglassfabrics.net) for pattern updates prior to starting the project. We also recommend that you test the project prior to cutting for kits. Finally, all free projects are intended to remain free to you and are not for resale.