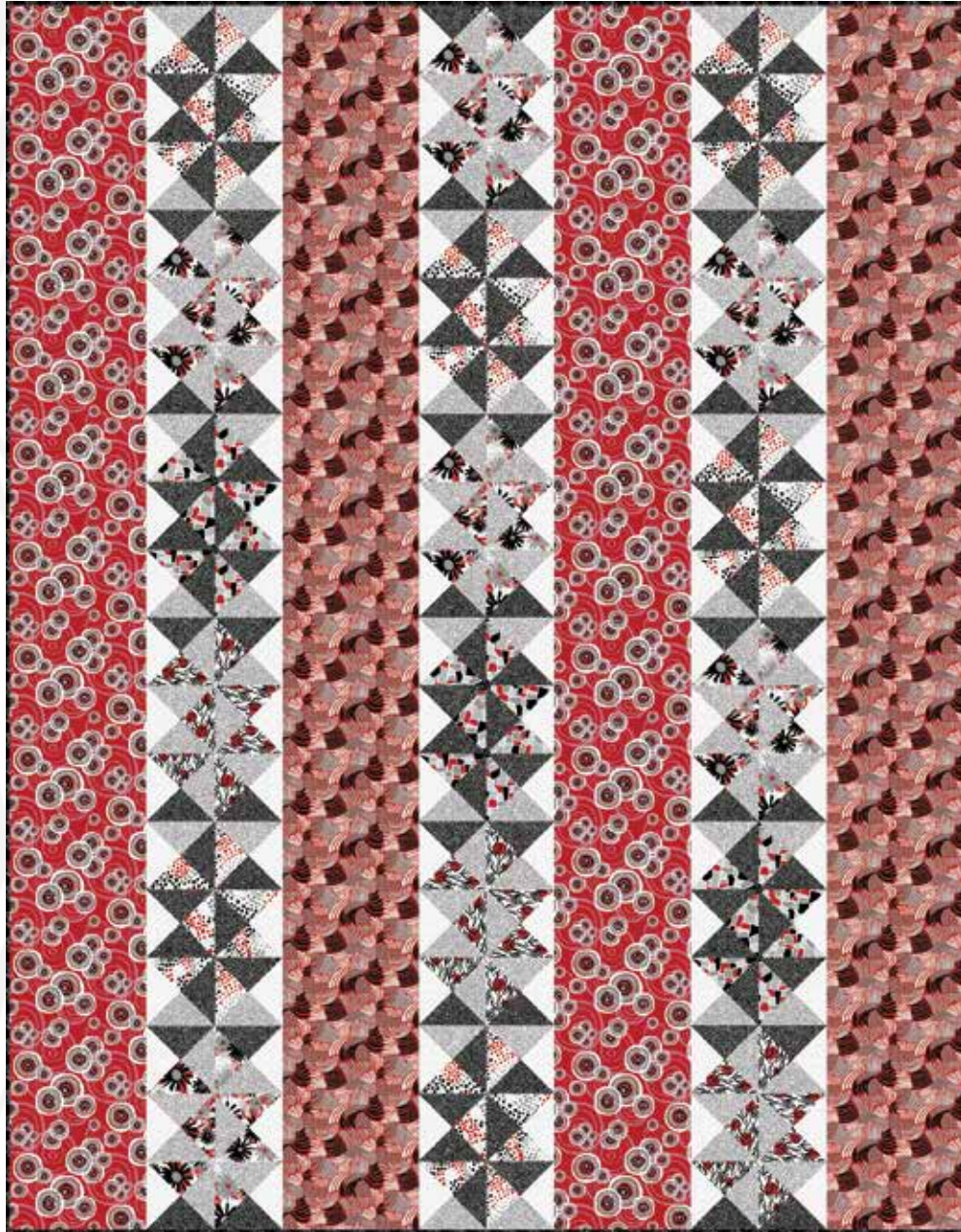


# Crimson Garden

••• A Free Project Sheet •••  
••• NOT FOR RESALE •••

*By Deborah Velasquez*



Quilt Design by Heidi Pridemore

Quilt 1

Skill Level: Advanced Beginner

 Henry Glass & Co., Inc.



facebook

Finished Quilt Size: 56" x 72"  
(142.24 cm x 182.88 cm)

49 West 37th Street, New York, NY 10018

tel: 212-686-5194 fax: 212-532-3525

Toll Free: 800-294-9495

[www.henryglassfabrics.net](http://www.henryglassfabrics.net)

Please check our website for pattern updates before starting this project.



# CRIMSON GARDEN

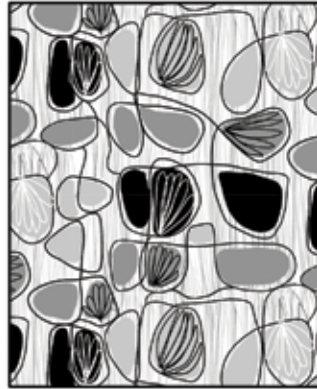
Quilt 1

Finished Quilt Size: 56" x 72"  
(142.24 cm x 182.88 cm)

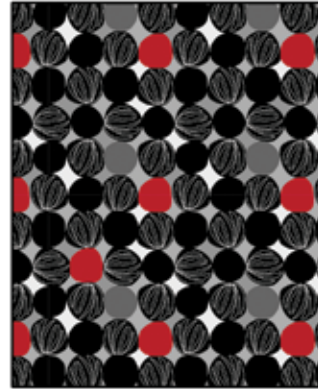
## Fabrics in the Collection



Swirls  
Red/Black – 1193-89



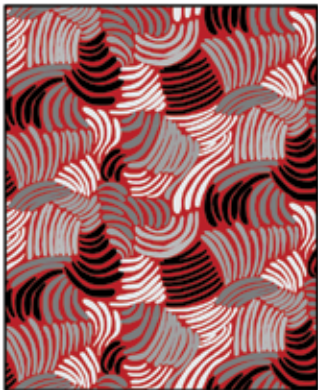
Abstract Ovals  
Gray – 1194-90



Touching Dots  
Black/Gray – 1195-98



Dot Sprays  
Multi – 1196-89



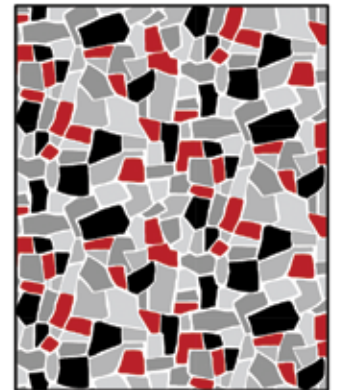
Abstract Lines  
Red/Gray – 1197-89



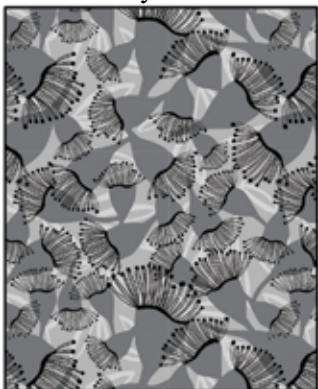
Fancy Daisies  
Multi – 1198-89



Vines and Berries  
Multi – 1199-09



Mosaic  
Multi – 1200-89



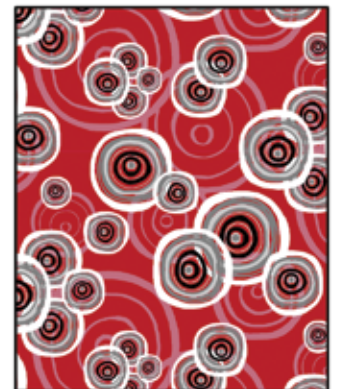
Eyelash Floral  
Gray – 1201-90



Dots and Small Vines  
Black/Red – 1202-98



Leaves  
Black/Gray – 1203-98



Circles in Circles  
Red – 1204-88

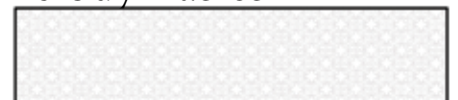
## Select Fabrics from Twinkle & Modern Melody Basics



Twinkle  
Gray – 135-90



Twinkle  
Black – 135-99



Modern Melody Basics  
Pigment White – 1063-01W

## Quilt 1

### Materials

½ yard (0.46m)	Dot Sprays - Multi (A)	1196-89
¾ yard (0.69m)	Twinkle - Black (B)	135-99
¾ yard (0.69m)	Twinkle - Gray (C)	135-90
½ yard (0.46m)	Fancy Daisies - Multi (D)	1198-89
¼ yard (0.23m)	Mosaic - Multi (E)	1200-89
¼ yard (0.23m)	Dots and Small Vines - Black/Red (F)	1202-98
2 ⅛ yards (1.95m)	Circles in Circles - Red (G)	1204-88
2 ⅛ yards (1.95m)	Abstract Lines - Red/Gray (H)	1197-89
⅝ yard (0.58m)	Touching Dots - Black/Gray (I)	1195-98*
¾ yard (0.69m)	Modern Melody Basics - Pigment White (J)	1063-01W
2 yards (1.83m)**	Large Paisley - Black/White (Backing)	1181-99

\*Includes binding

\*\*Fabric is 108" wide (274.32 cm)

### Cutting Instructions

Please note: All strips are cut across the width of fabric (WOF) from selvage to selvage unless otherwise noted.

#### From the Dot Sprays - Multi (A), cut:

- (2) 5 ¼" x WOF strips. Sub-cut (11) 5 ¼" squares. Cut the squares across both diagonals to make (44) 5 ¼" triangles.  
Note: You will only use (42) 5 ¼" triangles.

#### From the Twinkle - Black (B), cut:

- (4) 5 ¼" x WOF strips. Sub-cut (25) 5 ¼" squares. Cut the squares across both diagonals to make (100) 5 ¼" triangles.  
Note: You will only use (99) 5 ¼" triangles.

#### From the Twinkle - Gray (C), cut:

- (4) 5 ¼" x WOF strips. Sub-cut (25) 5 ¼" squares. Cut the squares across both diagonals to make (100) 5 ¼" triangles.  
Note: You will only use (99) 5 ¼" triangles.

#### From the Fancy Daisies - Multi (D), cut:

- (2) 5 ¼" x WOF strips. Sub-cut (11) 5 ¼" squares. Cut the squares across both diagonals to make (44) 5 ¼" triangles.  
Note: You will only use (42) 5 ¼" triangles.

#### From the Mosaic - Multi (E), cut:

- (1) 5 ¼" x WOF strip. Sub-cut (6) 5 ¼" squares. Cut the squares across both diagonals to make (24) 5 ¼" triangles.  
Note: You will only use (21) 5 ¼" triangles.

#### From the Dots and Small Vines - Black/Red (F), cut:

- (1) 5 ¼" x WOF strip. Sub-cut (6) 5 ¼" squares. Cut the squares across both diagonals to make (24) 5 ¼" triangles.  
Note: You will only use (21) 5 ¼" triangles.

#### From the Circles in Circles - Red (G), cut:

- (2) 8 ½" x 72 ½" Length of Fabric (LOF) strips.

#### From the Abstract Lines - Red/Gray (H), cut:

- (2) 8 ½" x 72 ½" LOF strips.

#### From the Touching Dots - Black/Gray (I), cut:

- (7) 2 ½" x WOF strips for the binding.

#### From the Modern Melody Basics - Pigment White (J), cut:

- (4) 5 ¼" x WOF strips. Sub-cut (27) 5 ¼" squares. Cut the squares across both diagonals to make (108) 5 ¼" triangles.

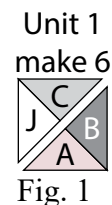
#### From the Large Paisley - Black/White (Backing), cut:

- (1) 64" x 80" WOF rectangle for the backing.

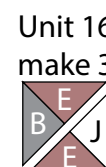
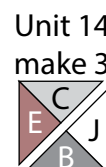
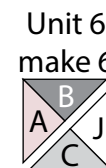
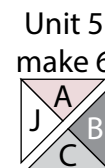
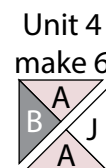
### Block Assembly

Note: The arrows in figures represent the fabric print direction. Pay attention to the fabric and unit orientations when assembling the various components. Use a ¼" seam allowance with right sides together (RST) unless otherwise noted.

1. Sew together (1) 5 ¼" Fabric J triangle and (1) 5 ¼" Fabric C triangle along short sides. Sew together (1) 5 ¼" Fabric B triangle and (1) 5 ¼" Fabric A triangle along short sides. Sew together the (2) newly sewn triangles along their long sides to make (1) 4 ½" Unit 1 square (Fig. 1). Repeat to make (6) Unit 1 squares total.



2. Repeat Step 1 and refer to Figures 2-24 for fabric identification and placement to make the indicated number of unit squares for Unit 2 through Unit 24. Note: There will be a total of (108) 4 ½" unit squares for Unit 1 through Unit 24.





# CRIMSON GARDEN

## Quilt 1

Unit 17  
make 3



Fig. 17

Unit 18  
make 3



Fig. 18

Unit 19  
make 3



Fig. 19

Unit 20  
make 3



Fig. 20

Unit 21  
make 3



Fig. 21

Unit 22  
make 3



Fig. 22

Unit 23  
make 3

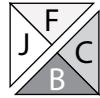


Fig. 23

Unit 24  
make 3



Fig. 24

3. Sew (1) Unit 1 square to the left side of (1) Unit 2 square to make the top row. Sew (1) Unit 3 square to the left side of (1) Unit 4 square to make the middle row. Sew (1) Unit 5 square to the left side of (1) Unit 6 square to make the bottom row. Sew together the (3) rows lengthwise to make (1) 8 1/2" x 12 1/2" Block One rectangle (Fig. 25). Repeat to make (6) Block One rectangles total.

Block One  
make 6

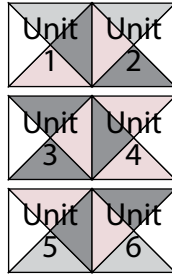


Fig. 25

4. Repeat Step 3 and refer to Figures 26-28 for component identification, placement and orientation to make (6) Block Two rectangles, (3) Block Three rectangles and (3) Block Four rectangles.

Block Two  
make 6

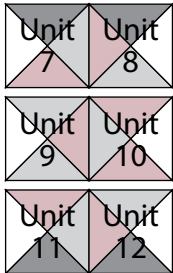


Fig. 26

Block Three  
make 3

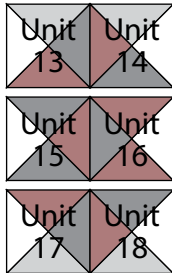


Fig. 27

Block Four  
make 3

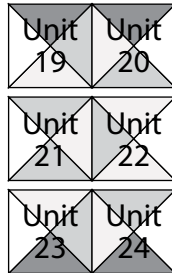


Fig. 28

### Quilt Top Assembly

(Follow the Quilt Layout while assembling the quilt top.)

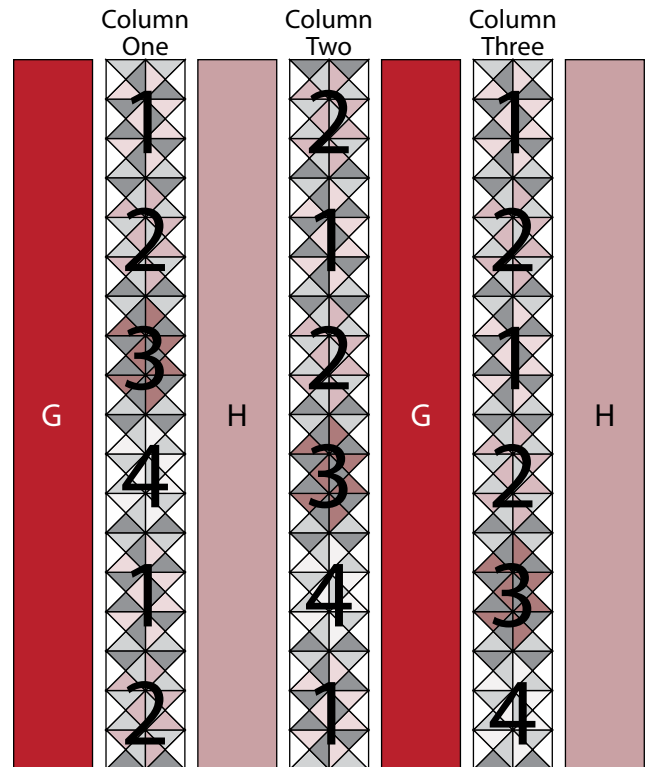
5. Refer to the Quilt Layout and sew together (6) assorted block rectangles end to end to make Column One. Repeat to make Column Two and Column Three.

6. Sew together (1) 8 1/2" x 72 1/2" Fabric G strip, Column One, (1) 8 1/2" x 72 1/2" Fabric H strip, Column Two, (1) 8 1/2" x 72 1/2" Fabric G strip, (1) Column Three and (1) 8 1/2" x 72 1/2" Fabric H strip. lengthwise and in that order from left to right, to make the quilt top.

7. Layer and quilt as desired.

8. Sew the (7) 2 1/2" x WOF Fabric I strips together, end to end with 45-degree seams, to make the binding. Fold this long strip in half lengthwise with wrong sides together and press.

9. Bind as desired.



Quilt Layout

Every effort has been made to ensure that all projects are error free. All the information is presented in good faith, however no warranty can be given nor results guaranteed as we have no control over the execution of instructions. Therefore, we assume no responsibility for the use of this information or damages that may occur as a result. When errors are brought to our attention, we make every effort to correct and post a revision as soon as possible. Please make sure to check [www.henryglassfabrics.net](http://www.henryglassfabrics.net) for pattern updates prior to starting the project. We also recommend that you test the project prior to cutting for kits. Finally, all free projects are intended to remain free to you and are not for resale.