

# Countdown to Christmas

Free Project Sheet  
NOT FOR RESALE

by Janet Nesbitt

ONE SISTER



Quilt designed by Denise Russell.

## Quilt 2

Quilt size: 46" x 66"

Skill Level: Advanced Beginner



Henry Glass & Co., Inc.



facebook

49 West 37th Street  
New York, NY 10018

Tel: 212-686-5194 - Fax: 212-532-3525

Toll Free: 800-294-9495

[www.henryglassfabrics.com](http://www.henryglassfabrics.com)

Please check our website for pattern updates  
before starting this project.

# Countdown to Christmas - Fabrics in the Collection



2843P-17 Countdown  
Panel - Lt. Blue



2835-33 Ornaments  
Cream



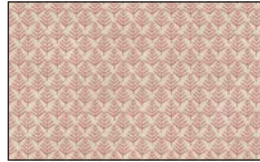
2836-33 Mixed Media  
Floral - Cream



2836-76 Mixed Media  
Floral - Teal



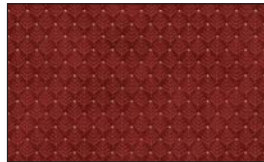
2836-88 Mixed Media  
Floral - Red



2837-32 Tree Texture  
Cream/Taupe



2837-66 Tree Texture  
Evergreen



2837-88 Tree Texture  
Red



2838-32 Ho Ho Stripe  
Cream/Taupe



2838-88 Ho Ho Stripe  
Red



2839-17 Dots  
Lt. Blue



2839-33 Dots  
Cream



2839-88 Dots  
Red



2840-33 Word Print  
Cream



2840-88 Word Print  
Red



2841-33 Plaid  
Cream



2841-66 Plaid  
Evergreen



2841-88 Plaid  
Red



2842-33 Countdown  
Cream



2842-66 Countdown  
Evergreen

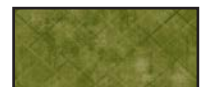


2842-88 Countdown  
Red

Selected fabrics from the  
Distressed Basic Collection



2769-30  
Cream



2769-60  
Lt. Green

# Countdown to Christmas - Quilt 2

## Materials

*Yardages and cutting instructions are based on 42" of usable fabric width*

1 panel 2843P-17 Countdown Panel - Lt. Blue  
1/4 yard 2836-33 Mixed Media Floral - Cream  
1/4 yard 2836-88 Mixed Media Floral - Red  
1/4 yard 2837-32 Tree Texture - Cream/Taupe  
1/4 yard 2837-88 Tree Texture - Red  
1/4 yard 2840-88 Word Print - Red  
1/3 yard 2769-60 Distressed Basic - Lt. Green  
3/8 yard 2769-30 Distressed Basic - Cream  
3/8 yard 2835-33 Ornaments - Cream  
3/8 yard 2842-33 Countdown - Cream  
1/2 yard 2841-88 Plaid - Red  
2/3 yard 2839-88 Dots - Red  
3/4 yard 2836-76 Mixed Media Floral - Teal  
3 yards 2835-33 Ornaments - Cream for backing  
Fusible web

## Cut Fabrics

*Note: All strips are cut across the width of the fabric (WOF) from selvage to selvage unless otherwise indicated.*

### From 2843P-17 Countdown Panel - Lt. Blue:

\*Trim panel to 22-1/2" x 44" \*\*\*.

*\*\*\*If, due to the printing process, you cannot use 44" in length, adjust the width of the 2841-88 Plaid – Red border 2 **top and bottom strips only** so the length of the quilt center will measure 45-1/2" before the addition of the pieced border. There is enough of the Plaid – Red fabric for this eventuality.*

### From each:

**2836-33 Mixed Media Floral – Cream**

**2836-88 Mixed Media Floral – Red**

**2840-88 Word Print – Red**

\*Cut one 5-1/2" x WOF strip. Sub-cut six 5-1/2" squares.

### From 2837-32 Tree Texture - Cream/Taupe:

\*Cut one 5-1/2" x WOF strip. Sub-cut four 5-1/2" squares.

### From 2837-88 Tree Texture – Red:

\*Cut four star shapes using the template.

### From 2769-60 Distressed Basic - Lt. Green:

\*Cut three 3" x WOF strips. Sub-cut forty 3" squares.

### From 2769-30 Distressed Basic – Cream:

\*Cut three 1-1/4" x WOF strips for border 1 (left and right sides only).

\*Cut five 1-1/2" x WOF strips for border 4.

### From 2835-33 Ornaments – Cream:

\*Cut two 5-1/2" x WOF strips. Sub-cut ten 5-1/2" squares.

### From 2842-33 Countdown – Cream:

\*Cut four 3" x WOF strips. Sub-cut forty-eight 3" squares.

### From 2841-88 Plaid – Red:

\*Cut four 1-1/4" x WOF strips for border 2.

\*Cut five 1-1/2" x WOF strips for border 5.

### From 2839-88 Dots – Red:

\*Cut two 3" x WOF strips. Sub-cut twenty-four 3" squares.

\*Cut six 2-1/2" x WOF strips for binding.

### From 2836-76 Mixed Media Floral – Teal:

\*Cut six 3-1/2" x WOF strips for border 6.

## Assemble Blocks

*Note: Measurements include 1/4" seam allowances.*

*Sew with right sides together unless otherwise stated.*

*If no direction is specified, press the seam toward the darker fabric.*

1. Draw a diagonal line on the wrong side of the 3" 2769-60 Distressed Basic - Lt. Green squares. With right sides together, place one marked Lt. Green square on a corner of one 5-1/2" 2835-33 Ornaments – Cream square and stitch on the drawn line. Repeat with the opposite corner of the same square. Trim seam allowances to 1/4" and press open. Repeat with the other square corners (*figure 1, next page*). Make ten 5-1/2" blocks.



Figure 1 – Make (10) 5-1/2” blocks.

2. Repeat Step 1 with the 3” 2842-33 Countdown – Cream and 5-1/2” 2840-88 Word Print – Red squares, the 3” 2839-88 Dots – Red and 5-1/2” 2836-33 Mixed Media Floral – Cream squares, and the 3” 2842-33 Countdown – Cream and 5-1/2” 2836-88 Mixed Media Floral – Red squares to make six 5-1/2” blocks of each type (*figure 2*).



Figure 2 – Make (6) 5-1/2” blocks of each.

3. Place the star shape onto a lightbox or windowpane. Layer the fusible web onto it and trace it four times. Cut each shape 1/8” outside the outline and fuse to the wrong side of the 2837-88 Tree Texture – Red fabric. Cut on the outline and remove the paper backing.

4. Fold and crease the 5-1/2” 2837-32 Tree Texture - Cream/Taupe squares in half twice. Position appliqué shapes on squares using the creased folds as guidelines and fuse them according to manufacturer’s instructions (*figure 3*). Machine appliqué using matching thread and the blanket stitch. Make four 5-1/2” blocks.



Figure 3 – Make (4) 5-1/2” blocks.

## Assemble Quilt Top

5. For border 1, join the three 1-1/4” 2769-30 Distressed Basic – Cream strips together end to end using diagonal seams. Measure the vertical length of the quilt top through the center and cut two border strips

that length. Sew one strip to each side of the quilt top and press the seams toward the border strips.

6. For border 2, sew the four 1-1/4” 2841-88 Plaid – Red border strips together end to end using diagonal seams. Measure the vertical length of the quilt top through the center and cut two border strips that length. Sew one strip to each side of the quilt top. Measure the width of the quilt top through the center. Cut two border strips that length and sew one to the top and one to the bottom. Press the seams toward the borders. The quilt measures 25-1/2” x 45-1/2” up to here.

7. For border 3 and referring to the quilt photo for block placement, arrange nine blocks for each side of the quilt. Sew blocks together and sew one border strip to each side of the quilt center. Press the seams toward quilt center.

8. Repeat Step 7 with seven blocks (including the star blocks) and sew one border strip to the top and one to the bottom of the quilt center.

9. Repeat Step 6 with the five 1-1/2” 2769-30 Distressed Basic – Cream strip to make and add border 4.

10. Repeat Step 6 with the five 1-1/2” 2841-88 Plaid – Red strips to make and add border 5.

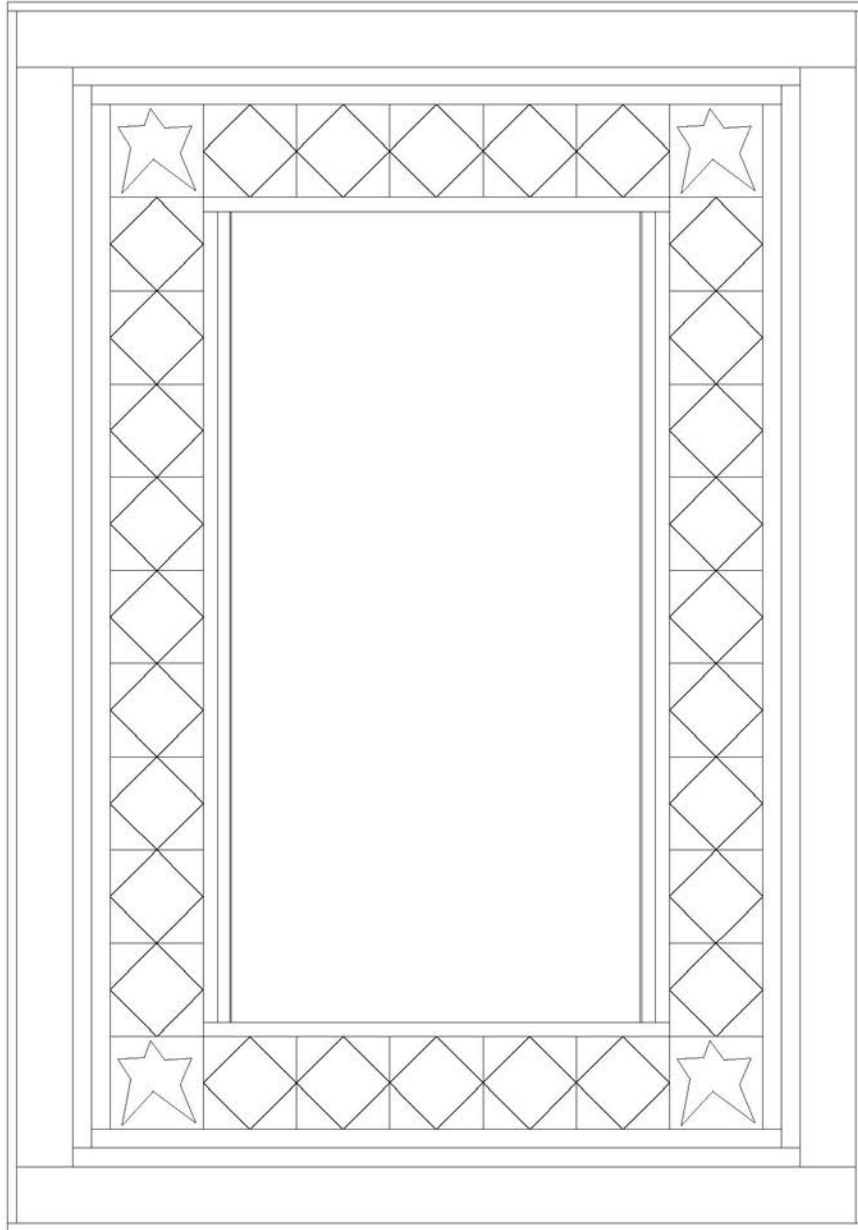
11. Repeat Step 6 with the six 3-1/2” 2836-76 Mixed Media Floral – Teal strips to make and add border 6.

## Finishing

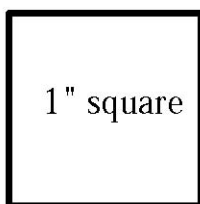
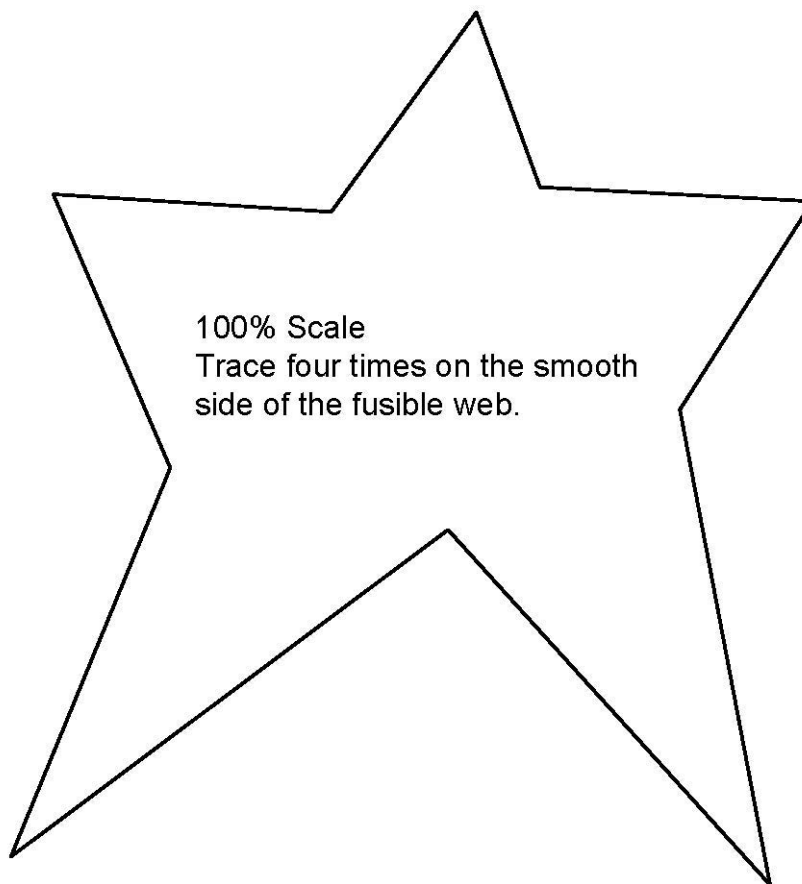
12. Create a quilt sandwich with the batting between the quilt top and the backing. Pin or baste layers together, mark quilting design, and quilt by hand or machine. When quilting is complete, remove pins or basting, and trim batting and backing even with raw edges of the quilt top.

13. Join the six 2-1/2” 2839-88 Dots – Red binding strips together end to end using a diagonal seam to make one long strip. Fold in half lengthwise and press. Sew binding to the edges of the quilt, mitering corners, and overlapping ends. Fold binding to the back of the quilt and stitch it in place by hand to finish.

# Countdown to Christmas - Quilt 2



Quilt Diagram



©2021 Henry Glass & Co. Inc.

*Every effort has been made to ensure that all projects are error free. All the information is presented in good faith; however, no warranty can be given nor results guaranteed as we have no control over the execution of instructions. Therefore, we assume no responsibility for the use of this information or damages that may occur as a result. When errors are brought to our attention, we make every effort to correct and post a revision as soon as possible. Please make sure to check [www.henryglassfabrics.com](http://www.henryglassfabrics.com) for pattern updates prior to starting the project. We also recommend that you test the project prior to cutting for kits. Finally, all free projects are intended to remain free to you and are not for resale.*