

Countdown to Christmas

Free Project Sheet
NOT FOR RESALE

by Janet Nesbitt



Quilt designed by Denise Russell.



Quilt 1

Quilt size: 64" x 77"
Skill Level: Intermediate

 **Henry Glass & Co., Inc.**



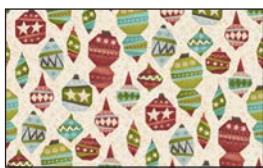
facebook

49 West 37th Street
New York, NY 10018
Tel: 212-686-5194 - Fax: 212-532-3525
Toll Free: 800-294-9495
www.henryglassfabrics.com
Please check our website for pattern updates
before starting this project.

Countdown to Christmas - Fabrics in the Collection



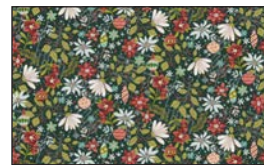
2843P-17 Countdown
Panel - Lt. Blue



2835-33 Ornaments
Cream



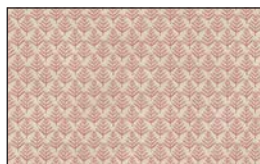
2836-33 Mixed Media
Floral - Cream



2836-76 Mixed Media
Floral - Teal



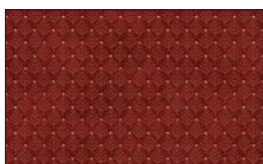
2836-88 Mixed Media
Floral - Red



2837-32 Tree Texture
Cream/Taupe



2837-66 Tree Texture
Evergreen



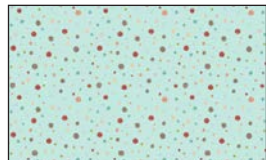
2837-88 Tree Texture
Red



2838-32 Ho Ho Stripe
Cream/Taupe



2838-88 Ho Ho Stripe
Red



2839-17 Dots
Lt. Blue



2839-33 Dots
Cream



2839-88 Dots
Red



2840-33 Word Print
Cream



2840-88 Word Print
Red



2841-33 Plaid
Cream



2841-66 Plaid
Evergreen



2841-88 Plaid
Red



2842-33 Countdown
Cream



2842-66 Countdown
Evergreen



2842-88 Countdown
Red

Selected fabrics from the
Distressed Basic Collection



2769-22
Rose



2769-60
Lt. Green

Countdown to Christmas - Quilt 1

Page 1

Materials

Yardages and cutting instructions are based on 42" of usable fabric width

1/4 yard 2835-33 Ornaments - Cream
1/4 yard 2836-33 Mixed Media Floral - Cream
1/3 yard 2837-66 Tree Texture - Evergreen
3/8 yard 2769-22 Distressed Basic - Rose
3/8 yard 2836-88 Mixed Media Floral - Red
3/8 yard 2842-33 Countdown - Cream
1/2 yard 2837-32 Tree Texture - Cream/Taupe
1/2 yard 2839-17 Dots - Lt. Blue
1/2 yard 2841-66 Plaid - Evergreen
2/3 yard 2838-88 Ho Ho Stripe - Red
2/3 yard 2839-88 Dots - Red
2/3 yard 2840-33 Word Print - Cream
2/3 yard 2842-66 Countdown - Evergreen
3/4 yard 2840-88 Word Print - Red
7/8 yard 2769-60 Distressed Basic - Lt. Green
7/8 yard 2836-76 Mixed Media Floral - Teal
7/8 yard 2841-33 Plaid - Cream
4-1/8 yards 2836-33 Mixed Media Floral - Cream
for backing
Plastic for templates.

Cut Fabrics

Note: All strips are cut across the width of the fabric (WOF) from selvage to selvage unless otherwise indicated.

From each:

2835-33 Ornaments – Cream

2836-33 Mixed Media Floral – Cream

*Cut one 3-3/4" x WOF strip. Sub-cut five 3-3/4" squares.

From 2837-66 Tree Texture - Evergreen:

*Cut three 2-1/2" x WOF strips. Sub-cut forty 2-1/2" squares and twelve 2" squares.

From 2769-22 Distressed Basic – Rose:

*Cut one 8-1/4" x WOF strip. Sub-cut three 8-1/4" squares.

From 2836-88 Mixed Media Floral – Red:

*Cut two 4-1/2" x WOF strips. Sub-cut ten 4-1/2" squares.

From 2842-33 Countdown – Cream:

*Cut seven 1-1/2" x WOF strips for border 1.

From each:

2837-32 Tree Texture - Cream/Taupe

2839-17 Dots - Lt. Blue

*Cut five 2-1/2" x WOF strips.

From 2841-66 Plaid – Evergreen:

*Cut two 2-1/8" x WOF strips.

*Cut seven 1-1/2" x WOF strips for border 3.

From 2838-88 Ho Ho Stripe – Red:

*Cut eleven 2" x WOF strips. Sub-cut thirty-one 2" x 12-1/2" strips.

From 2839-88 Dots – Red:

*Cut one 8-1/4" x WOF strip. Sub-cut three 8-1/4" squares.

*Cut twenty wedges with template B.

From 2840-33 Word Print – Cream:

*Cut eight 2-1/2" x WOF strips. Sub-cut 120 2-1/2" squares.

From 2842-66 Countdown – Evergreen:

*Cut eight 2-1/2" x WOF strips for binding.

From 2840-88 Word Print – Red:

*Cut five 4-1/2" x WOF strips. Sub-cut forty 4-1/2" squares.

From 2769-60 Distressed Basic - Lt. Green:

*Cut two 2-1/8" x WOF strips.

*Cut twenty wedges with template A.

From 2836-76 Mixed Media Floral – Teal:

*Cut seven 3-1/2" x WOF strips for border 2.

From 2841-33 Plaid – Cream:

*Cut four 2-1/8" x WOF strips.

*Cut two 8-1/4" x WOF strips. Sub-cut six 8-1/4" squares.

Countdown to Christmas - Quilt 1

Page 2

Assemble Blocks

Note: Measurements include 1/4" seam allowances. Sew with right sides together unless otherwise stated. If no direction is specified, press the seam toward the darker fabric.

1. Draw a diagonal line on the wrong side of the 2-1/2" 2837-66 Tree Texture - Evergreen squares. With right sides together, place one marked Evergreen square on a corner of one 4-1/2" 2840-88 Word Print - Red square and stitch on the drawn line. Trim seam allowance to 1/4" and press open. Draw a diagonal line on the wrong side of the 2-1/2" 2840-33 Word Print - Cream square. In the same manner, sew a Cream square to the opposite corner of the Red square. Repeat with the other corners (*figure 1*). Make forty 4-1/2" units.



Figure 1 – Make (40) 4-1/2" units.

2. Sew a 2-1/2" 2839-17 Dots - Lt. Blue strip to a 2-1/2" 2837-32 Tree Texture - Cream/Taupe strip to make a strip set. Do not press open yet. Repeat to make five strip sets. Cross-cut the strips into forty 4-1/2" sections. Press each section open (*figure 2*).

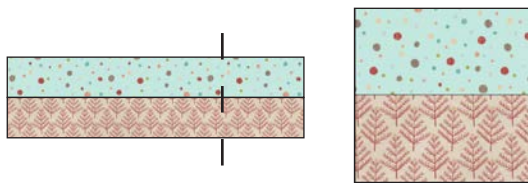


Figure 2 – Make (40) 4-1/2" units.

3. Noting fabric orientation, sew one Step 2 unit to opposite sides of a 4-1/2" 2836-88 Mixed Media Floral - Red square (*figure 3*). Press the seams away from the center. Repeat to make ten center strips.



Figure 3 – Make 10.

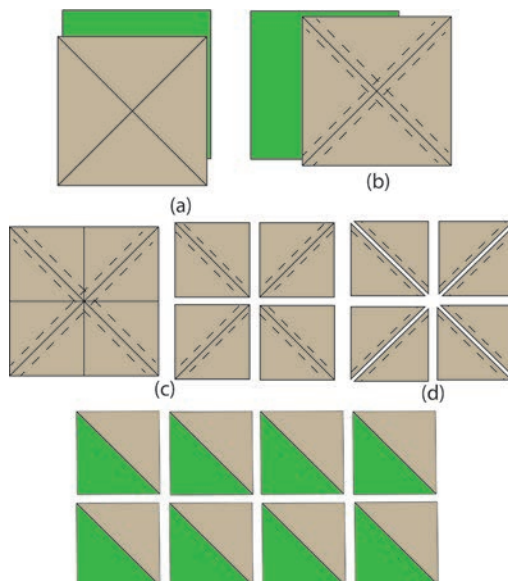
4. Noting fabric orientation, sew one Step 1 unit to each side of a Step 2 unit. Press the seams toward the

center. Repeat to make twenty strips. Sew one strip to the top and one to the bottom of the Step 3 center strips to make ten 12-1/2" blocks (*figure 4*). Press the seams in one direction.



Figure 4 – Make (10) 12-1/2" blocks.

5. Mark two diagonal lines on the wrong side of the 8-1/4" 2841-33 Plaid - Cream squares (a). Layer a marked Cream square atop an 8-1/4" 2839-88 Dots - Red square. Stitch 1/4" on each side of the marked lines (b), cut vertically and horizontally to make four equal squares (c), then cut each square on the drawn lines to make eight half-square triangles (d). Press open and trim dog ears (*figure 5, here and next page*). Repeat with the remaining Cream and Red squares to make a total of twenty 3-3/4" half-square triangles (HST).



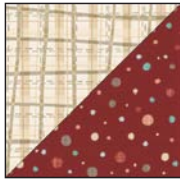


Figure 5 – Make (20) 3-3/4" HST.

6. Repeat Step 2 with the two 2-1/8" 2841-66 Plaid – Evergreen and two 2-1/8" 2841-33 Plaid – Cream strips to make strip sets. Cross-cut the strip sets into twenty 3-3/4" sections (*figure 6*).

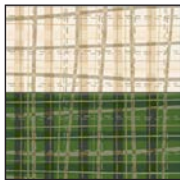


Figure 6 – Make (20) 3-3/4" units.

7. Sew a Step 6 unit to opposite sides of a 3-3/4" 2835-33 Ornaments – Cream square (*figure 7*). Press the seams toward the center. Make a total of five center strips.

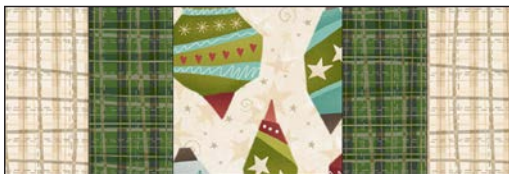


Figure 7

8. Noting fabric orientation, sew a Step 5 unit to opposite sides of the remaining Step 6 units (*figure 8*). Press the seams away from the center. Make ten strips.

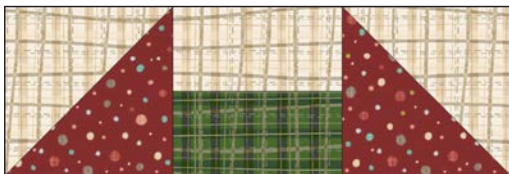


Figure 8

9. Sew a Step 8 strip to the top and one to the bottom of the Step 7 center strips (*figure 9*). Press the seams in one direction. Make five 10-1/2" patches.



Figure 9 – Make (5) 10-1/2" patches.

10. Trace shapes A and B on the plastic to make templates. Cut on the outline. Trace templates A on the wrong side of the 2769-60 Distressed Basic - Lt. Green fabric using a fabric marker. Cut on the outline using a ruler and a rotary cutter. Repeat with template B and the 2839-88 Dots – Red fabric. Save the Red wedges for the next block.

11. Position the narrower side of one Step 10 Lt. Green wedge on the top left corner of one Step 9 patch, right sides together, and pin the entire length. Sew the pieces together and press open. Working clockwise, sew the next Lt. Green wedge as before. Continue until you have sewn the four edges. Repeat with the other Step 9 patches to make five 12-1/2" blocks (*figure 10*).



Figure 10 – Make (5) 12-1/2" blocks.

12. Repeat Step 5 (2841-33 Plaid – Cream and 2769-22 Distressed Basic – Rose squares), Step 6 (2841-33 Plaid – Cream and 2769-60 Distressed Basic - Lt. Green strips), Step 7 (2836-33 Mixed Media Floral – Cream squares), Steps 9 and 11 to make five more 12-1/2" blocks (*figure 11, next page*), this time aligning

Countdown to Christmas - Quilt 1

Page 4

the wider end of the wedge to the top left corner of the patches, and continuing on as before.



Figure 11 - Make (5) 12-1/2" blocks.

Assemble Quilt Top

13. Referring to the quilt photo for block placement, lay out four blocks and three 2" x 12-1/2" 2838-88 Ho Ho Stripe – Red sashing strips in five rows, and join the blocks and sashing strips together in each row. Press the seams toward the sashing.

14. To make the horizontal sashing rows, sew together four 2838-88 Ho Ho Stripe – Red sashing strips and three 2" 2837-66 Tree Texture - Evergreen cornerstone squares. Repeat to make a total of four sashing strips. Press the seams toward the sashing.

15. Matching adjacent seams, sew block rows and horizontal sashing strips together. Press the seams in one direction.

16. For border 1, join the seven 1-1/2" 2842-33 Countdown – Cream strips together end to end using diagonal seams. Measure the vertical length of the quilt top through the center and cut two border strips that length. Sew one strip to each side of the quilt top and press the seams toward the border strips. Measure the width of the quilt top through the center. Cut two border strips that length and sew one to the top and one to the bottom. Press the seams toward the borders.

17. Repeat Step 16 with the seven 3-1/2" 2836-76 Mixed Media Floral – Teal strips to make and add border 2.

18. Repeat Step 16 with the seven 1-1/2" 2841-66 Plaid – Evergreen strips to make and add border 3.

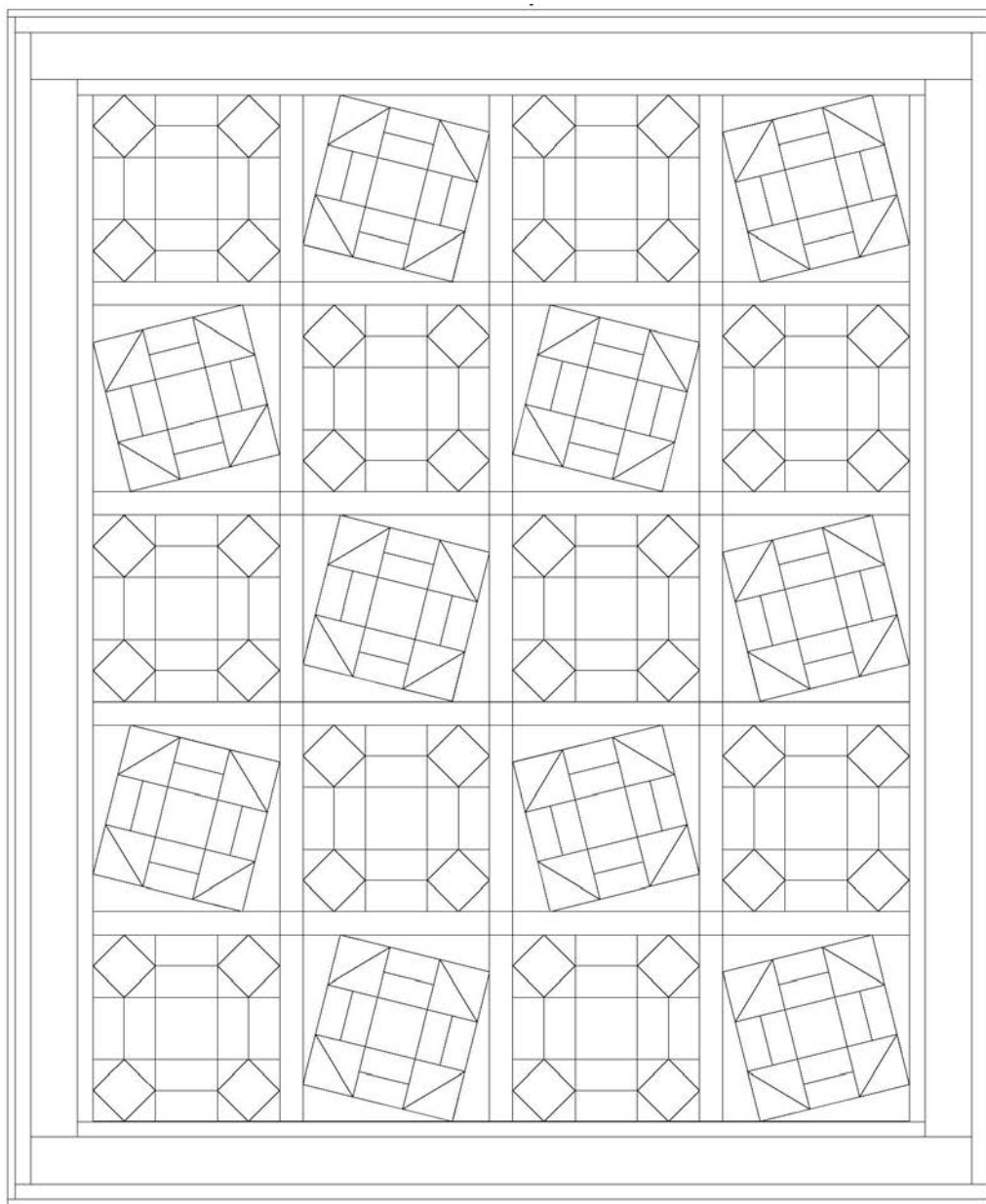
Finishing

19. Create a quilt sandwich with the batting between the quilt top and the backing. Pin or baste layers together, mark quilting design, and quilt by hand or machine. When quilting is complete, remove pins or basting, and trim batting and backing even with raw edges of the quilt top.

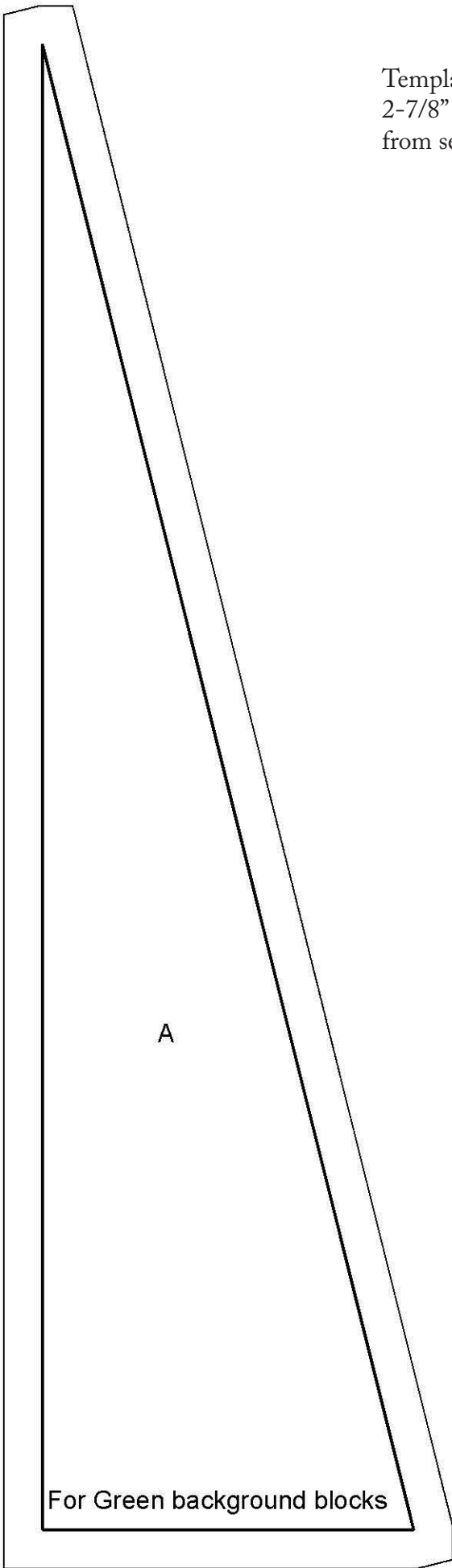
20. Join the eight 2-1/2" 2842-66 Countdown – Evergreen binding strips together end to end using a diagonal seam to make one long strip. Fold in half lengthwise and press. Sew binding to the edges of the quilt, mitering corners, and overlapping ends. Fold binding to the back of the quilt and stitch it in place by hand to finish.

©2021 Henry Glass & Co. Inc.

Every effort has been made to ensure that all projects are error free. All the information is presented in good faith; however, no warranty can be given nor results guaranteed as we have no control over the execution of instructions. Therefore, we assume no responsibility for the use of this information or damages that may occur as a result. When errors are brought to our attention, we make every effort to correct and post a revision as soon as possible. Please make sure to check www.henryglassfabrics.com for pattern updates prior to starting the project. We also recommend that you test the project prior to cutting for kits. Finally, all free projects are intended to remain free to you and are not for resale.



Quilt Diagram



Templates measure
2-7/8" x 10-1/8"
from seam to seam.

Page 6

Countdown to Christmas - Quilt 1

