

# Bumble Garden Flannel

## Fat Eighth-Friendly Baby Quilt

by Kim Diehl



**2 ply  
flannel**

Finished Quilt Size: 48½" x 48½"  
A Free Project Sheet from

 Henry Glass & Co., Inc.



49 West 37th Street, New York, NY 10018  
tel: 212-686-5194 • fax: 212-532-3525  
Toll-free: 800-294-9495  
[www.henryglassfabrics.com](http://www.henryglassfabrics.com)

facebook

# Bumble Garden Flannel

## Fat Eighth-Friendly Baby Quilt

Finished quilt size: 48½" x 48½"

### PROJECT NOTES

Please note that the Orange Peel yardage amount specified in "Materials" will give you the flexibility to "fussy cut" and personalize the look of your quilt's center square. The fabric can be cut so the print forms an "X" shape in each corner (as shown in the featured quilt), or you can opt to cut your square with an "O" shape positioned in each corner. The choice is yours!

### MATERIALS

Yardages are based on a 42" width of useable fabric after prewashing and removing selvages.

1¼ yards of multi-colored Orange Peel print for quilt center (F1408-136)

17 fat eighths (9" x 21") of assorted prints for border and binding (F1399-11, 66; F1400-11, 33; F1401-30, 66; F1402-22, 44; F1403-66, 90; F1404-11, 22, 44; F1405-30; F1406-33; F1407-11, 90)

3½ yards of fabric of choice for backing (Kim suggests cream diamonds and squares print, F1407-93)

55" x 55" square of batting

Standard sewing and quilting supplies

### CUTTING

Cut all pieces across the width of the fabric in the order given unless otherwise specified. For greater ease, cutting instructions for the border patchwork pieces are provided separately. **Please cut the border pieces before cutting the binding**, to give yourself plenty of color choices for the patchwork.

From the multi-colored Orange Peel print, cut:

1 square, 36½" x 36½"

After pieces for the border patchwork have been cut, use the scraps of the 17 assorted prints to cut:

Enough 2½"-wide random lengths to make a 204"

length of binding when joined together end to end.

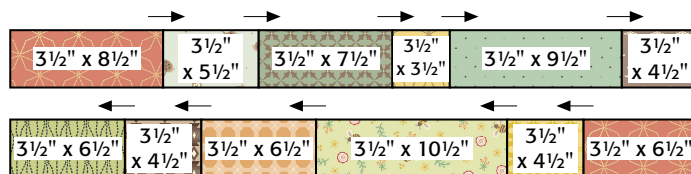
### CUTTING AND PIECING THE BORDER

Sew all pieces with right sides together using a ¼" seam allowance unless otherwise noted. Press the seam allowances as indicated by the arrows or otherwise specified.

For the scrappy patchwork border featured in this quilt, the dimensions provided in the steps that follow

can be used to duplicate the look of the pictured quilt, OR you can create your own patchwork design by cutting and piecing random lengths of 3½"-wide pieces of fabric to make the border lengths specified in each step. You decide!

- Choosing the prints randomly, cut the pieces indicated in the illustration (dimensions include seam allowances) for the two patchwork strips shown. Join the pieces in each strip to make a pieced row measuring 3½" x 36½", including the seam allowances. Press. Join the pieced rows. Press. The pieced left-hand border unit should measure 6½" x 36½", including the seam allowances.

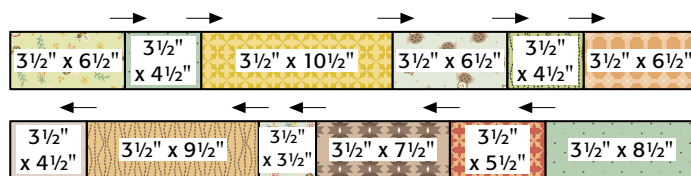


Cutting dimensions for left-hand border



Left-hand border unit, 6½" x 36½"

- Referring to step 1, cut and sew the pieces indicated below to make a pieced right-hand border unit measuring 6½" x 36½", including the seam allowances.

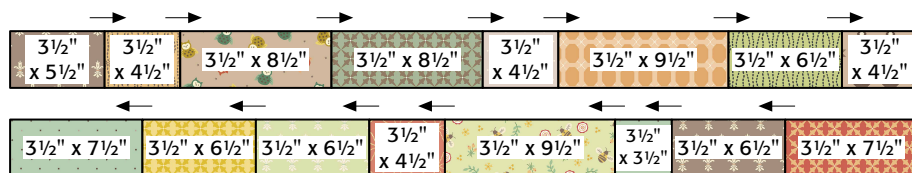


Cutting dimensions for right-hand border



Right-hand border unit, 6½" x 36½"

- 3 Again referring to step 1, cut and sew the pieces indicated at right to make a pieced top border unit measuring  $6\frac{1}{2}'' \times 48\frac{1}{2}''$ , including the seam allowances.

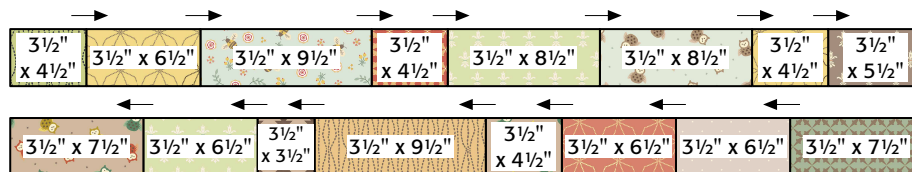


Cutting dimensions for top border



Top border unit,  $6\frac{1}{2}'' \times 48\frac{1}{2}''$

- 4 Referring once again to step 1, cut and sew the pieces indicated at right to make a pieced bottom border unit measuring  $6\frac{1}{2}'' \times 48\frac{1}{2}''$ , including the seam allowances.



Cutting dimensions for bottom border



Bottom border unit,  $6\frac{1}{2}'' \times 48\frac{1}{2}''$

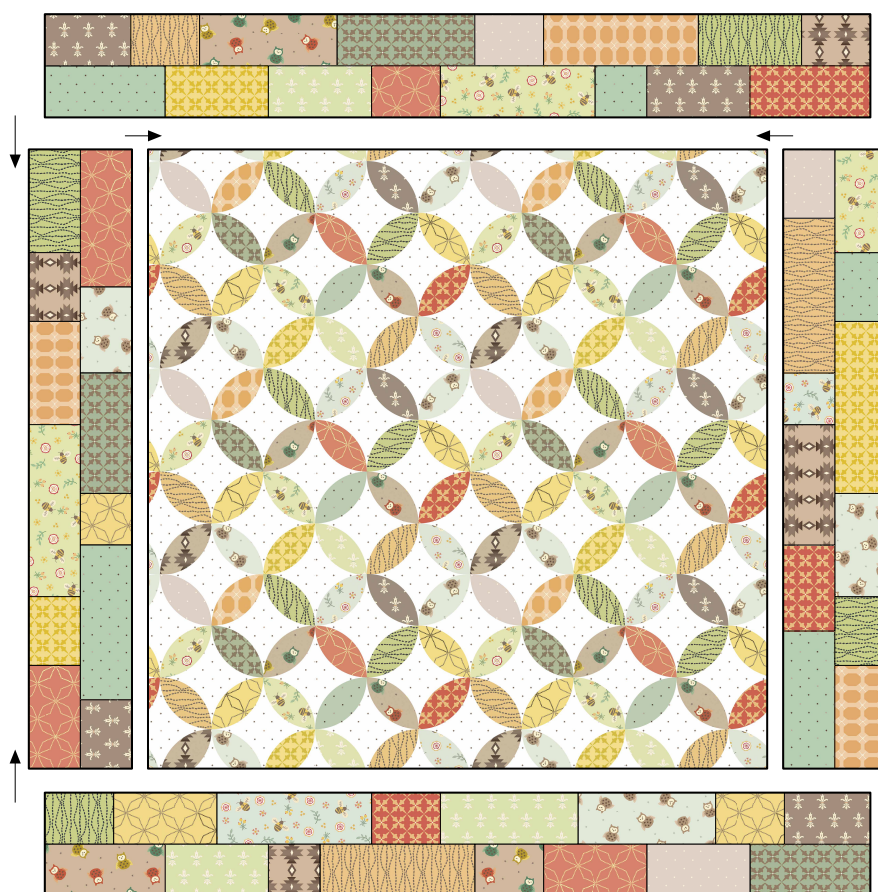
## ADDING THE PIECED BORDER UNITS TO THE QUILT CENTER

Using the illustration as a guide, join the pieced right- and left-hand border units to the Orange Peel square cut for the quilt center. Press. Join the pieced top and bottom border units to the remaining sides of the Orange Peel square. Press.

## COMPLETING THE QUILT

Layer and baste the quilt top, batting, and backing. Quilt the layers. Join the  $2\frac{1}{2}''$ -wide random lengths of assorted prints to make a pieced 204" length of binding and use it to bind the quilt.

Every effort has been made to ensure that all projects are error free. All the information is presented in good faith, however no warranty can be given nor results guaranteed as we have no control over the execution of instructions. Therefore, we assume no responsibility for the use of this information or damages that may occur as a result. When errors are brought to our attention, we make every effort to correct and post a revision as soon as possible. Please make sure to check [www.henryglassfabrics.com](http://www.henryglassfabrics.com) for pattern updates prior to starting the project. We also recommend that you test the project prior to cutting for kits. Finally, all free projects are intended to remain free to you, and are not for resale or other forms of distribution.



# Bumble Garden Flannel

*Fabrics in the Collection (2 ply flannel)*



F1399-11



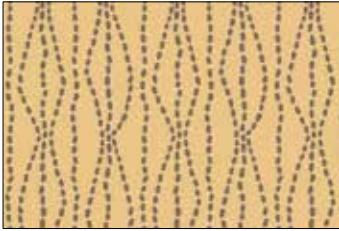
F1399-66



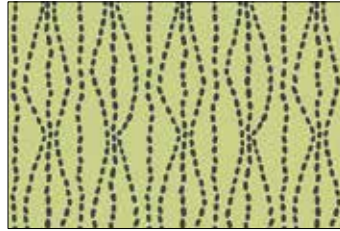
F1400-11



F1400-99



F1401-30



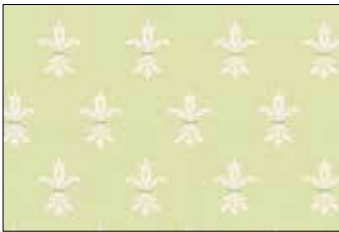
F1401-66



F1402-22



F1402-44



F1403-66



F1403-90



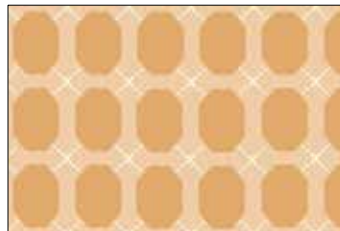
F1404-11



F1404-22



F1404-44



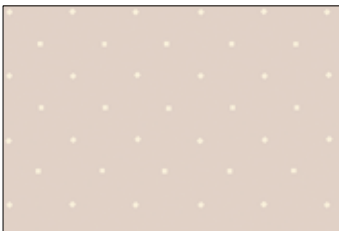
F1405-30



F1406-90



F1407-11



F1407-90



F1407-93



F1408-136