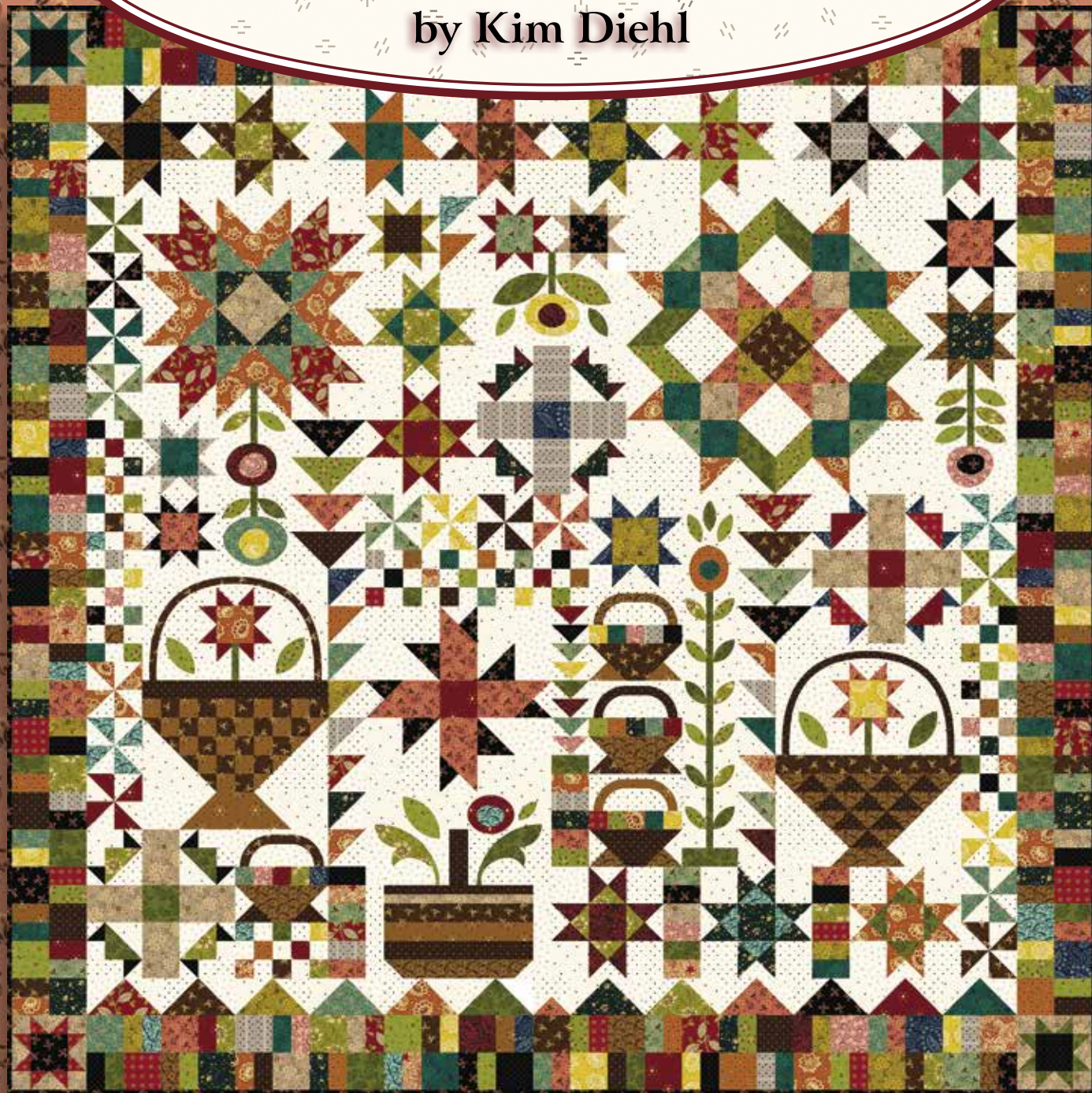


STITCH ALONG PROGRAM

# Brimming Over

by Kim Diehl



**Quiet Grace Collection**

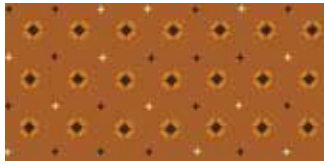
Six-part series ♦ Finished quilt size: 58½" x 58½"



Henry Glass & Co., Inc.



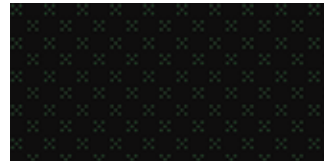
# Quiet Grace Fabrics in the Collection



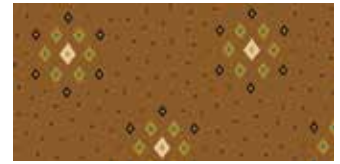
**916-30**  
Orange Tilted Boxes



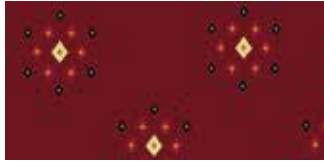
**916-88**  
Cranberry Tilted Boxes



**917-99**  
Black Ditsy Dots



**918-33**  
Chestnut Diamond Clusters



**918-88**  
Cranberry Diamond Clusters



**919-44**  
Gold Scatter Garden



**919-77**  
Teal Scatter Garden



**919-93**  
Taupey Gray Scatter Garden



**920-30**  
Orange Tossed Blossoms



**920-44**  
Yellow Tossed Blossoms



**921-11**  
Turquoise Starberries



**922-77**  
Teal Garden Glories



**923-66**  
Pine Leafy Vines



**924-66**  
Kiwi Foulard



**925-66**  
Kiwi Meandering Stars



**926-33**  
Chocolate Berry Sprigs



**926-66**  
Kiwi Berry Sprigs



**926-99**  
Black Berry Sprigs



**927-11**  
Aqua Vintage Floral



**927-30**  
Chestnut Vintage Floral



**928-33**  
Chocolate Sunbursts



**929-11**  
Aqua Clover Blossoms



**929-22**  
Pink Clover Blossoms



**930-88**  
Cranberry Fancy Leaves



**931-22**  
Pink Berry Patch



**932-88**  
Red Sprinkled Stars



**933-90**  
Gray Sprigged Stripe



**934-77**  
Navy Swirled Paisley



**934-88**  
Cranberry Swirled Paisley



**935-40**  
Cream Little Lines



**936-40**  
Cream Stardust



**937-40**  
Cream Leaf Pile