

Blush and Blue Collection

Flowering Friendships Mini Quilt

by Kim Diehl



Finished Quilt Size: 18" x 18"



Henry Glass & Co., Inc.



49 West 37th Street, New York, NY 10018

tel: 212-686-5194 • fax: 212-532-3525

Toll-free: 800-294-9495

www.henryglassfabrics.com

facebook

Blush and Blue Collection

Flowering Friendships Mini Quilt

Finished Quilt Size: 18" x 18"

MATERIALS

Yardages are based on a 42" width of useable fabric after prewashing and removing selvages.

3 fat eighths (9" x 21") of assorted cream prints for patchwork (1955-7; 1958-7; 1963-7)
1 chubby sixteenth (9" x 10½") of cream tiny leaves print for patchwork (1960-7)
1 fat quarter (18" x 21") of blue honeycomb print for patchwork, appliqués, and binding (1971-77)
7 chubby sixteenths of assorted blue prints for patchwork and appliqués (1956-77; 1959-77; 1962-77; 1965-77; 1966-77; 1969-77; 1970-77)
8 chubby sixteenths of assorted blush prints for patchwork and appliqués (1956-22; 1957-22; 1961-22; 1962-22; 1964-22; 1967-22; 1968-22; 1969-22)
⅔ yard of fabric of choice for backing (Kim suggests blush Parlor Fancies, 1956-22)
24" x 24" square of batting
Bias bar to comfortably fit into your sewn stem tubes
Liquid glue for fabric, water-soluble and acid-free
Supplies for your favorite appliqué method
Standard sewing and quilting supplies

CUTTING

Cut all pieces across the width of the fabric in the order given unless otherwise noted, referring to the swatch page at the end of this handout as needed. For greater ease, cutting dimensions for the stems are provided below, with cutting instructions for the remaining appliqués provided separately.

From the blue honeycomb print, cut;

4 binding strips, 2½" x 21"
1 strip, 1" x 21"; crosscut into 1 strip-set strip, 1" x 10½"
1 strip, 1½" x 21"; crosscut into 5 rectangles, 1½" x 3"
Reserve the remainder of the blue honeycomb print for the appliqués.

From each of the 7 assorted blue prints, cut:

1 strip-set strip, 1" x 10½" (combined total of 7, grand total of 8 with previously cut strip)
2 strips, 1½" x 10½"; crosscut into 5 rectangles, 1" x 3" (combined total of 35, grand total of 40 with previously cut rectangles)

Reserve the remainder of the assorted blue prints.

From the reserved remainder of the assorted blue prints, choosing the prints randomly, cut the following bias strips for the stems:

1¼" x 4½"

1¼" x 3½"

1¼" x 4"

1¼" x 3"

1¼" x 6½"

Reserve the remainder of all assorted blue prints for the appliqués.

From each of the 8 assorted blush prints, cut:

1 strip-set strip, 1" x 10½" (combined total of 8)
2 strips, 1½" x 10½"; crosscut into 5 rectangles, 1" x 3" (combined total of 40)

Reserve the remainder of the blush prints for the appliqués.

From the chubby sixteenth of cream tiny leaves print, cut:

6 strip-set strips, 1" x 10½"

From each of the 3 fat eighths of assorted cream prints, cut:

3 strips, 1" x 21"; crosscut into 6 strip-set strips, 1" x 10½" (combined total of 18, grand total of 24 with previously cut strips)

Reserve the remainder of the 3 assorted cream prints.

From the reserved remainder of the 3 assorted cream prints, choosing the prints randomly for the pieced appliqué block background, cut:

1 square, 5" x 5" (top left corner)

1 rectangle, 3½" x 5" (top right corner)

1 rectangle, 3½" x 8" (block bottom)

STITCHING *and* PREPARING the Stems

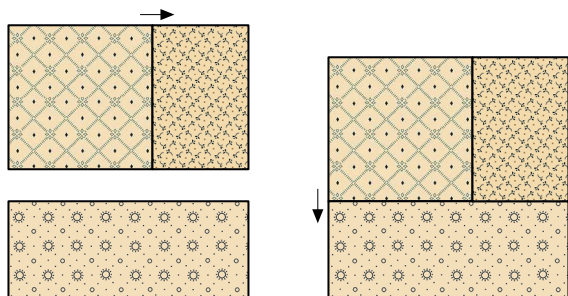
- 1 Select the assorted blue 1¼"-wide bias strips cut for the stems. With *wrong* sides together (you want to see the pretty side of the print as you stitch), fold each strip in half lengthwise and use a ¼" seam allowance to stitch along the long raw edges to form tubes.
- 2 Slide a bias bar into a sewn tube, centering the seam allowance so it will be hidden from the front. Press. Remove the bias bar and press once more for a nice, flat finish, trimming away any excess seam allowance that might be visible from the front. Apply small dots of liquid fabric glue underneath the seam allowance at approximately ½" intervals. Use a hot, dry iron to heat set the seam in place. Repeat with the remaining stem tubes.



STITCHING the Appliqué Block

Please refer to the appliqué pattern sheet provided on page 5 when preparing and laying out the appliqués. Note that the stem lengths provided are approximate; trim away any excess stem lengths as your block design takes shape, ensuring there is an approximate overlap of ¼".

- 1 Join the cream 5" square and the cream 3½" x 5" rectangle as shown. Press. Join the pieced top unit to the cream 3½" x 8" rectangle. Press. The pieced appliqué block background should measure 8" square, including the seam allowances.



Appliqué block background,
8" x 8"

- 2 Using the reserved remainder of the blue honeycomb print and your favorite appliqué method, prepare the vase appliqué. Referring to the quilt pictured on the cover for color choices, use the reserved remainder of all other blush and blue prints to prepare the remaining appliqués.

TIP

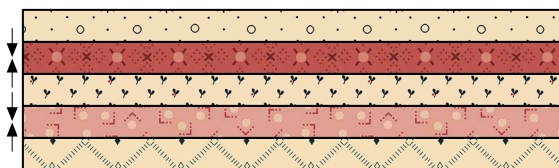
To simplify the step of laying out and establishing the appliqué design, I began by pinning the vase in place and then laid out the main appliqués (bird, flowers, and pomegranate), pinning them in place as well. Next, I positioned the stems onto the background, beginning at the vase and extending them outward to meet the flowers. Last, I added the leaves and berries to fill in and complete the design. Once I was pleased with the layout and ensured that everything fit well, I basted the pieces in place and worked from the bottom layer to the top to appliqué the design.

- 3 Using the appliqué pattern sheet on page 5 as a guide for piece placement, lay out and baste the appliqués and stems (trimming away any excess length) to the pieced block background. Use your favorite method to stitch the appliqués in place.

PIECING the Rail Fence Variation Blocks

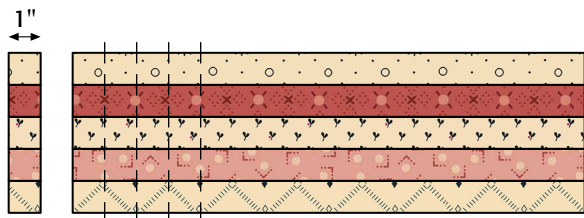
Sew all pieces with right sides together and a ¼" seam allowance unless otherwise noted. Press the seam allowances as indicated by the arrows or otherwise specified.

- 1 Select three assorted cream 1" x 10½" strip-set strips, and two assorted blush 1" x 10½" strip-set strips. Join the strips as shown. Press. Repeat to piece a total of four blush-and-cream strip set units measuring 3" x 10½", including the seam allowances.



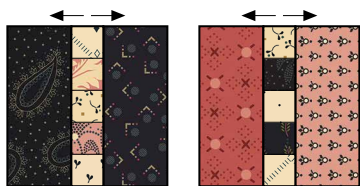
Make 4 blush-and-cream strip sets,
3" x 10½".

- 2 Cut each strip set unit at 1" intervals to produce five strip-set segments, 1" x 3", including the seam allowances. With five strip-set segments cut from each of the four strip sets, there will be a combined total of 20 blush and cream strip-set segments. Keep the blush and cream strip-set segments organized as a group to simplify the block assembly steps.



Cut 5 segments, 1" wide, from each strip set.

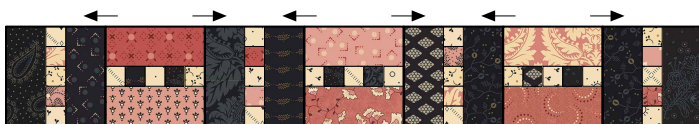
- 3 Using the assorted blue 1" x 10½" strip-set strips, and the remaining cream 1" x 10½" strip-set strips, repeat steps 1–2 to produce 20 blue-and-cream strip-set segments. Keep the blue-and-cream strip-set segments organized as a group.
- 4 Choosing the prints randomly, select two blue 1½" x 3" rectangles and one blush-and-cream strip set segment. Join the pieces. Press. Repeat for a total of 20 pieced Blue Rail Fence Variation blocks measuring 3" square, including the seam allowances. In the same manner, use the assorted blush 1½" x 3" rectangles and the blue-and-cream strip-set segments to piece 20 Blush Rail Fence Variation blocks measuring 3" square.



Make 20 Blue and 20 Blush Rail Fence Variation blocks, 3" x 3"

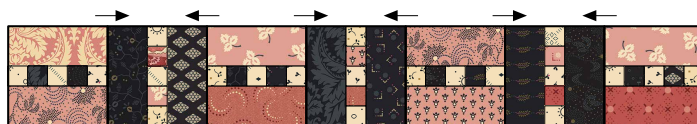
PIECING the Quilt Top

- 1 Lay out four blue Rail Fence Variation blocks and three blush Rail Fence Variation blocks in alternating positions as shown. Join the blocks. Repeat for a total of two pieced A rows measuring 3" x 18", including the seam allowances.



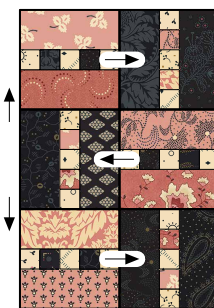
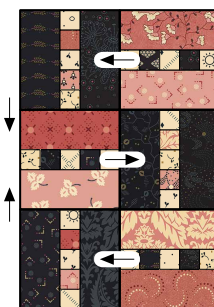
Make 2 A rows, 3" x 18".

- 2 Lay out four blush Rail Fence Variation blocks and three blue Rail Fence Variation blocks in alternating positions as shown. Join the blocks. Repeat for a total of two pieced B rows measuring 3" x 18", including the seam allowances.



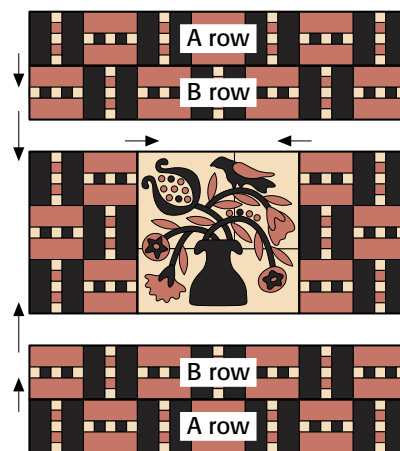
Make 2 B rows, 3" x 18".

- 3 Referring to the illustration, lay out three each of the blush and blue Rail Fence Variation blocks in three horizontal rows of two blocks. Join the blocks in each row. Press. Join the rows. Press. In the same manner, make a mirror-image unit. The pieced side-block and mirror-image side-block units should measure 5½" x 8", including the seam allowances.



Make 1 side unit and 1 side mirror-image unit, 5½" x 8".

- 4 Lay out the pieced A rows from step 1, the pieced B rows from step 2, the appliquéd block, and the two pieced side units as shown. Join the side units to the appliquéd block to form the center unit. Press. Join the A and B rows. Press. Join the pieced A and B row units to the center unit. Press.



COMPLETING the Quilt

Layer and baste the quilt top, batting, and backing. Quilt the layers. Join the blue honeycomb binding strips to make one length and use it to bind the quilt.



Patterns do not include seam allowances.



Turn off scaling when printing this page.
The box at left should measure 1/2" x 1/2".

Every effort has been made to ensure that all projects are error free. All the information is presented in good faith, however no warranty can be given nor results guaranteed as we have no control over the execution of instructions. Therefore, we assume no responsibility for the use of this information or damages that may occur as a result. When errors are brought to our attention, we make every effort to correct and post a revision as soon as possible. Please make sure to check www.henryglassfabrics.com for pattern updates prior to starting the project. We also recommend that you test the project prior to cutting for kits. Finally, all free projects are intended to remain free to you and are not for resale or other forms of distribution.



©2019 Kim Diehl

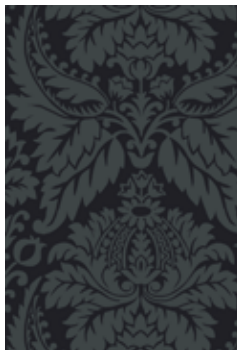
Blush and Blue *Fabrics in the Collection*



1955-7
Diamond Lattice, Cream



1956-22
Parlor Fancies, Blush



1956-77
Parlor Fancies, Blue



1957-22
Hugs and Kisses, Blush



1958-7
Berry Sprigs, Cream



1959-77
Dotted Paisley, Blue



1960-7
Tiny Leaves, Cream



1961-22
Meandering Blossoms,
Blush



1962-22
Framed Polka Dots,
Blush



1962-77
Framed Polka Dots, Blue



1963-7
Sunburst, Cream



1964-22
Double Crescents, Blush



1965-77
Pomegranate Vine, Blue



1966-77
Feathered Stripe, Blue



1967-22
Tossed Leaves, Blush



1968-22
Leafy Rings, Blush



1969-22
Vintage Blooms, Blush



1969-77
Vintage Blooms, Blue



1970-77
Floral Sprays, Blue



1971-77
Honeycomb, Blue