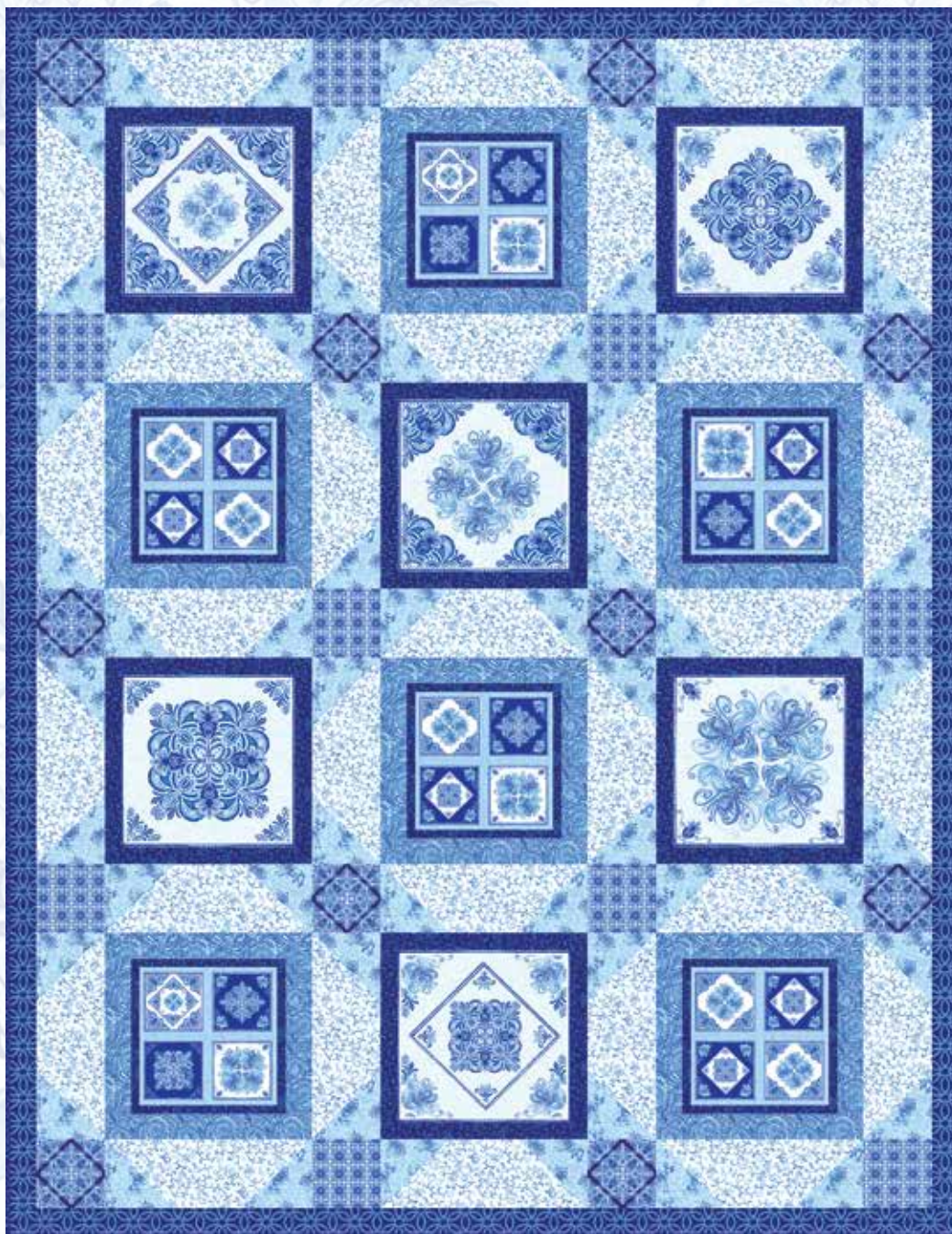


BLUE DREAM

• A Free Project Sheet •
• NOT FOR RESALE •

By Diannart

Quilt Design by Heidi Pridemore



Quilt 1

Skill Level: Advanced Beginner



Henry Glass & Co., Inc.



facebook

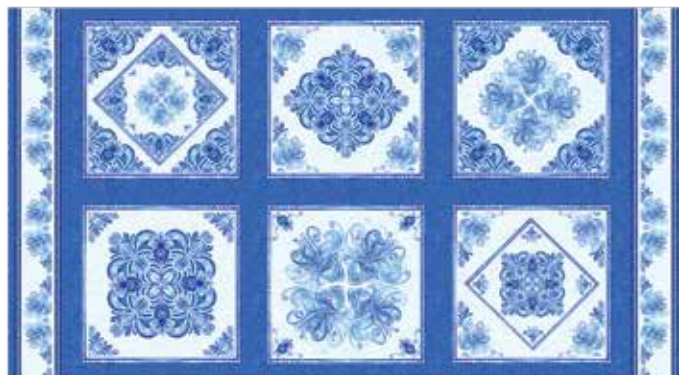
Finished Quilt Size: 55" x 71"
49 West 37th Street, New York, NY 10018
tel: 212-686-5194 fax: 212-532-3525
Toll Free: 800-294-9495
www.henryglassfabrics.net

BLUE DREAM

Quilt 1

Finished Quilt Size: 55" x 71"

Fabrics in the Collection



10"x 10" Blocks - Blue
1469-70



Casablanca Tile - Blue
1470-77



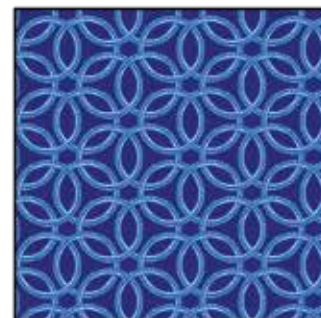
Large Floral Vine - Light Blue
1471-7



Large Floral Vine
Medium Blue – 1471-11



Double Border Tile - Blue
1472-11



Rings - Royal Blue
1473-77



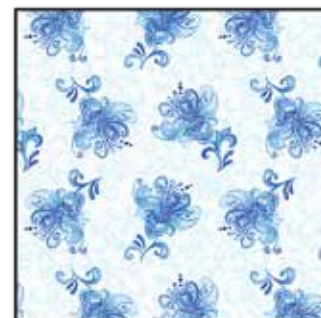
Mini Tiles - Blue
1474-70



Paisley - Blue
1475-11



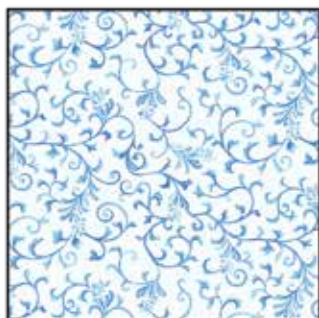
Two Tone Paisley - Blue
1476-70



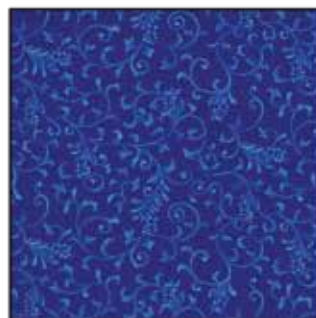
Small Tossed Floral
Light Blue – 1477-7



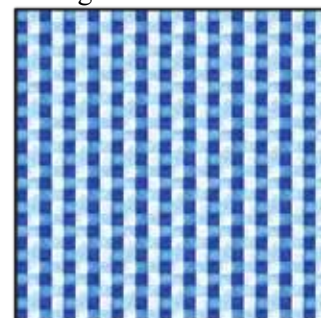
Small Tossed Floral - Blue
1477-11



Vine - Light Blue
1478-7



Vine - Royal Blue
1478-77



Weave - Blue
1479-7

BLUE DREAM

Quilt 1

Page 1

Materials

1 panel	10" x 10" Blocks - Blue (A)	1469-70
1 3/8 yards	Vine - Royal Blue (B)	1478-77*
1/2 yard	Double Border Tile - Blue (C)	1472-11
1/2 yard	Paisley - Blue (D)	1475-11
1 1/2 yards	Vine - Light Blue (E)	1478-7
1 yard	Small Tossed Floral - Blue (F)	1477-11
1/2 yard	Casablanca Tile - Blue (G)	1470-77
1/2 yard	Mini Tiles - Blue (H)	1474-70
1/2 yard	Rings - Royal Blue (I)	1473-77
3 1/2 yards	Large Floral Vine - Light Blue (Backing)	1471-7

*Includes binding

Cutting Instructions

Please note: all strips are cut across the width of fabric (WOF) from selvage to selvage edge unless otherwise noted.

From the 10" x 10" Blocks - Blue (A):

- Fussy cut (6) 10 1/2" squares each centered on a block.

From the Vine - Royal Blue (B), cut:

- (3) 1 1/2" x WOF strips. Sub-cut (12) 1 1/2" x 8 1/2" strips.
- (3) 1 1/2" x WOF strips. Sub-cut (12) 1 1/2" x 10 1/2" strips.
- (3) 2" x WOF strips. Sub-cut (12) 2" x 10 1/2" strips.
- (4) 2" x WOF strips. Sub-cut (12) 2" x 13 1/2" strips.
- (7) 2 1/2" x WOF strips for the binding.

From the Double Border Tile - Blue (C):

- Fussy cut (6) 8 1/2" squares each centered on a 4-patch block.

From the Paisley - Blue (D), cut:

- (4) 2" x WOF strips. Sub-cut (12) 2" x 12 1/2" strips.
- (3) 2" x WOF strips. Sub-cut (12) 2" x 9 1/2" strips.

From the Vine - Light Blue (E), cut:

- (11) 4 1/2" x WOF strips. Sub-cut (31) 4 1/2" x 12 1/2" strips.

From the Small Tossed Floral - Blue (F), cut:

- (7) 4 1/2" x WOF strips. Sub-cut (62) 4 1/2" squares.

From the Casablanca Tile - Blue (G):

- Fussy cut (10) 4 1/2" squares each centered on a diamond.

From the Mini Tiles - Blue (H):

- Fussy cut (10) 4 1/2" squares each centered on the grid.

From the Rings - Royal Blue (I), cut:

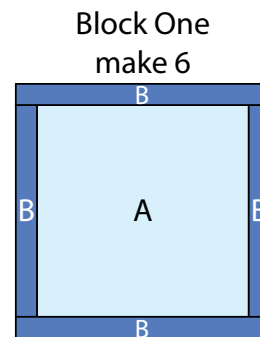
- (4) 2" x WOF strips. Sew the strips together end to end with diagonal seams and cut (2) 2" x 68 1/2" strips.
- (3) 2" x WOF strips. Sew the strips together end to end with diagonal seams and cut (2) 2" x 55 1/2" strips.

From the Large Floral Vine - Light Blue (Backing), cut:

- (2) 63" x WOF strips for the backing. Sew the strips together and trim to make the 63" x 79" back.

Sewing Instructions

- Sew (1) 2" x 10 1/2" Fabric B strip to each side of (1) 10 1/2" Fabric A square. Sew (1) 2" x 13 1/2" Fabric B strip to the top and to the bottom of the Fabric A square. Trim the block to measure 12 1/2" square to make one Block One square (Fig. 1). Repeat to make (6) Block One squares total.



Trim block to measure 12 1/2" x 12 1/2" after adding borders

Fig. 1

- Sew (1) 1 1/2" x 8 1/2" Fabric B strip to each side of (1) 8 1/2" Fabric C square. Sew (1) 1 1/2" x 10 1/2" Fabric B strip to the top and to the bottom of the Fabric C square. Trim the block to measure 9 1/2" square to make (1) Unit 1 block (Fig. 2). Repeat to make (6) Unit 1 blocks total.

- Sew (1) 2" x 9 1/2" Fabric D strip to each side of (1) Unit 1 block. Sew (1) 2" x 12 1/2" Fabric D strip to the top and to the bottom of the Unit 1 block to make (1) Block Two square (Fig. 3). Repeat to make (6) Block Two squares total.

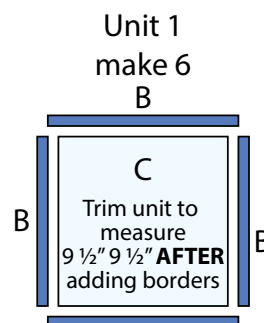


Fig. 2 B

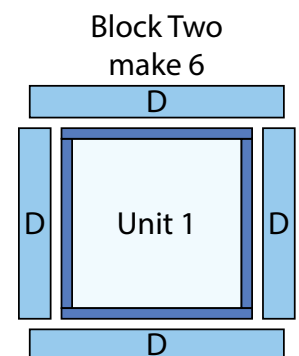


Fig. 3

- Place (1) 4 1/2" Fabric F square on the left side of (1) 4 1/2" x 12 1/2" Fabric E strip, right sides together (Fig. 4). Sew across the diagonal of the square from the upper left corner to the lower right corner (Fig. 4). Flip open the triangle formed and press (Fig. 5). Trim away the excess fabric from behind the triangle, leaving a 1/4" seam allowance.

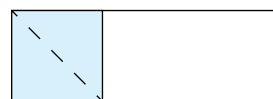


Fig. 4



Fig. 5

BLUE DREAM

Quilt 1

Page 2

5. Place another 4 ½" Fabric F square on the right side of the 4 ½" x 12 ½" Fabric E strip, right sides together (Fig. 6). Sew across the diagonal of the square from the upper right corner to the lower left corner (Fig. 6). Flip open the triangle formed and press. Trim away the excess fabric from behind the triangle, leaving a ¼" seam allowance to make (1) Unit 2 strip (Fig. 7).

6. Repeat Steps 4-5 to make (31) Unit 2 strips total.



Fig. 6

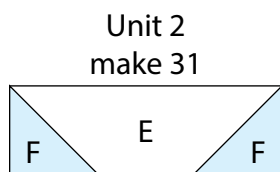


Fig. 7

7. Sew (1) 4 ½" Fabric G square, (1) Unit 2 strip, (1) 4 ½" Fabric H square, (1) Unit 2 strip, (1) 4 ½" Fabric G square, (1) Unit 2 strip and (1) 4 ½" Fabric H square together end to end and in that order to make (1) Sashing Row (Fig. 8). Pay attention to the orientation of the strips. Repeat to make (5) Sashing Rows total.

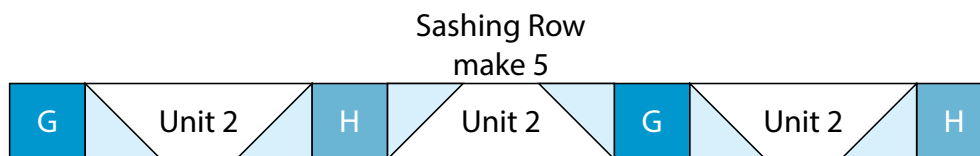


Fig. 8

Quilt Top Assembly

(Refer to the Quilt Layout while assembling.)

8. Sew (1) Unit 2 strip, (1) Block One square, (1) Unit 2 strip, (1) Block Two square, (1) Unit 2 strip, (1) Block One square and (1) Unit 2 strip together lengthwise and in that order to make Row One. Pay attention to the orientation of the strips. Repeat to make Row Three.

9. Sew (1) Unit 2 strip, (1) Block Two square, (1) Unit 2 strip, (1) Block One square, (1) Unit 2 strip, (1) Block Two square and (1) Unit 2 strip together lengthwise and in that order to make Row Two. Pay attention to the orientation of the strips. Repeat to make Row Four.

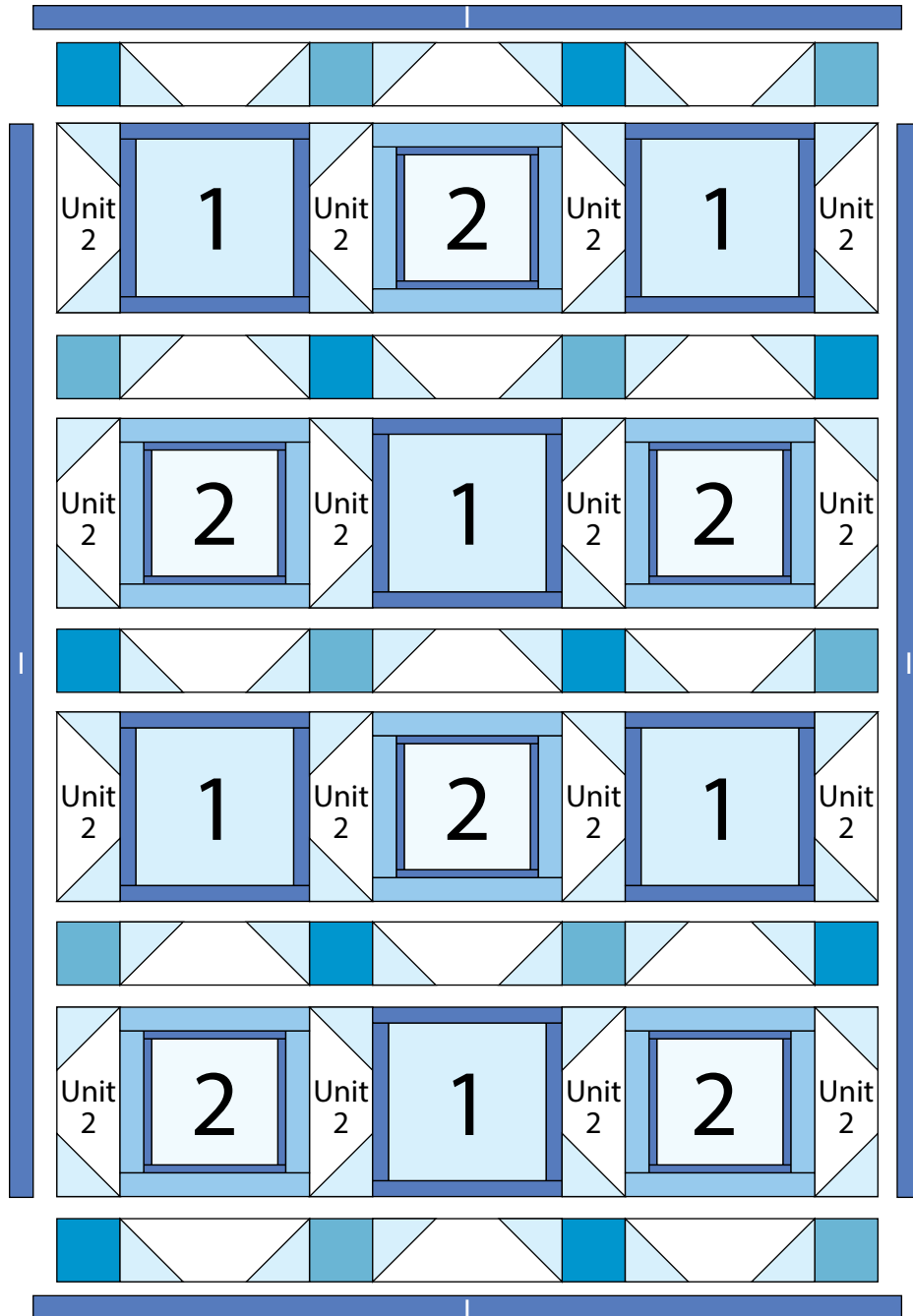
10. Sew the (5) Sashing Rows and (4) Block Rows, in numerical order, together, alternating them, to make the Center Block. Pay attention to the orientation of the Sashing Rows.

11. Sew (1) 2" x 68 ½" Fabric I strip to each side of the Center Block. Sew (1) 2" x 55 ½" Fabric I strip to the top and to the bottom of the Center Block to make the quilt top.

12. Layer and quilt as desired.

13. Sew the (7) 2 ½" x WOF Fabric B strips together, end to end with 45-degree seams, to make the binding. Fold this long strip in half lengthwise with wrong sides together and press.

14. Bind as desired.



Quilt Layout

Every effort has been made to ensure that all projects are error free. All the information is presented in good faith, however no warranty can be given nor results guaranteed as we have no control over the execution of instructions. Therefore, we assume no responsibility for the use of this information or damages that may occur as a result. When errors are brought to our attention, we make every effort to correct and post a revision as soon as possible. Please make sure to check www.henryglassfabrics.com for pattern updates prior to starting the project. We also recommend that you test the project prior to cutting for kits. Finally, all free projects are intended to remain free to you and are **not for resale**.