

Black, White & Red Hot



••••• A Free Project Sheet •••••
••••• NOT FOR RESALE •••••



Quilt Design by Lisa Loessel

Quilt 1

Skill Level: Advanced Beginner

 **Henry Glass & Co., Inc.**



[facebook](#)

Finished Quilt Size: 68" x 68"
49 West 37th Street, New York, NY 10018
tel: 212-686-5194 fax: 212-532-3525
Toll Free: 800-294-9495
www.henryglassfabrics.net
Please check our website for pattern updates before starting this project.

BLACK, WHITE & RED HOT Quilt 1

Fabrics in the Collection



Black, White & Red Hot Flower
White/Multi – 2439-1



Medallion - White/Multi
2440-1



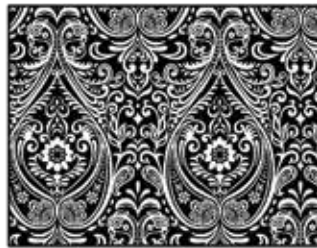
Medallion - Red
2440-88



Medallion - Black
2440-99



Arabesque - Red
2441-88



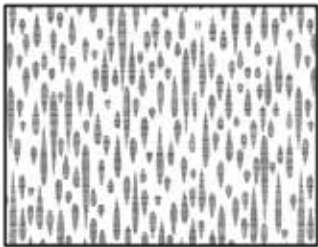
Arabesque - Black
2441-99



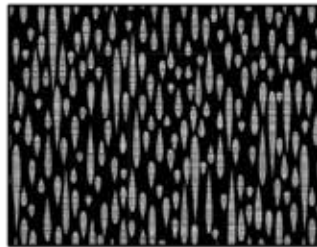
Chevron Fern - White/Multi
2442-1



Chevron Fern - Black/Multi
2442-99



Tear Drops - White
2443-1



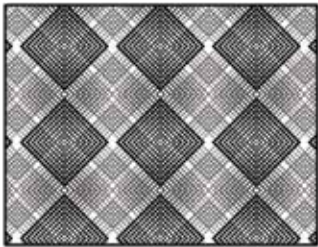
Tear Drops - Black
2443-99



Paisley - White/Multi
2444-1



Paisley - Black/Multi
2444-99



Geo Plaid - White
2445-1



Geo Plaid - Black/Multi
2445-99



Berry Vine - White/Multi
2447-1



Berry Vine - Black/Multi
2447-99

Select Fabrics from Modern Melody Basics



Crimson Red
1063-88



Wine
1063-89



Silver Gray
1063-90



Dark Gray
1063-91



Black
1063-99

BLACK, WHITE & RED HOT Quilt 1

Materials

½ yard	Chevron Fern - White/Multi (A)	2442-1
¼ yard	Modern Melody Basics - Dark Gray (B)	1063-91
¼ yard	Arabesque - Black (C)	2441-99
1 yard	Medallion - Red (D)	2440-88
¼ yard	Geo Plaid - White (E)	2445-1
¼ yard	Black, White & Red Hot Flower - White/Multi (F)	2439-1
1 ⅝ yards	Modern Melody Basics - Wine (G)	1063-89
⅜ yard	Medallion - Black (H)	2440-99
¼ yard	Tear Drops - White (I)	2443-1
¼ yard	Berry Vine - White/Multi (J)	2447-1
1 ⅝ yards	Modern Melody Basics - Black (K)	1063-99
1 yard	Berry Vine - Black/Multi (L)	2447-99*
¼ yard	Medallion - White/Multi (M)	2440-1
¼ yard	Paisley - White/Multi (N)	2444-1
¼ yard	Modern Melody Basics - Crimson Red (O)	1063-88
4 ⅓ yards	Arabesque - Red (Backing)	2441-88

*Includes binding

Cutting Instructions

Please note: all strips are cut across the width of fabric (WOF) from selvage to selvage edge unless otherwise noted.

From the Chevron Fern - White/Multi (A), cut:

- (1) 6 ⅞" x WOF strip. Sub-cut (4) 6 ⅞" squares and (4) 3 ½" squares.
- (1) 6 ⅞" x WOF strip. Sub-cut (4) 6 ⅞" squares. Cut (2) squares across the diagonal from the upper right corner to the lower left corner to make (4) A1 triangles. Cut (2) squares across the diagonal from the upper left corner to the lower right corner to make (4) A2 triangles.

From the Modern Melody Basics - Dark Gray (B), cut:

- (1) 3 ⅞" x WOF strip. Sub-cut (4) 3 ⅞" squares. Cut the squares across (1) diagonal to make (8) 3 ⅞" triangles.

From the Arabesque - Black (C), cut:

- (1) 6 ⅞" x WOF strip. Sub-cut (2) 6 ⅞" squares and (4) 4 ½" squares. Cut (1) 6 ⅞" square across the diagonal from the upper right corner to the lower left corner to make (2) 6 ⅞" C1 triangles. Cut (1) 6 ⅞" square across the diagonal from the upper left corner to the lower right corner to make (2) 6 ⅞" C2 triangles.

From the Medallion - Red (D), cut:

- (1) 6 ⅞" x WOF strip. Sub-cut (2) 6 ⅞" squares.
- (7) 3 ⅞" x WOF strips. Sub-cut (68) 3 ⅞" squares. Cut the squares across (1) diagonal to make (136) triangles.

From the Geo Plaid - White (E), cut:

- (1) 3 ½" x WOF strip. Sub-cut (8) 3 ½" squares.

From the Black, White and Red Hot Flower - White/Multi (F), cut:

- (1) 3 ½" x WOF strip. Sub-cut (8) 3 ½" squares.

From the Modern Melody Basics - Wine (G), cut:

- (6) 4 ½" x WOF strips. Sew the strips together end to end with diagonal seams. Trim the seams to ¼" and cut (4) 4 ½" x 60 ½" strips.
- (2) 6 ⅞" x WOF strips. Sub-cut (11) 6 ⅞" squares. Cut the squares across (1) diagonal to make (22) 6 ⅞" triangles.
- (1) 3 ½" x WOF strip. Sub-cut (10) 3 ½" squares.

From the Medallion - Black (H), cut:

- (1) 6 ⅞" x WOF strip. Sub-cut (4) 6 ⅞" squares. Cut the squares across (1) diagonal to make (8) 6 ⅞" triangles.
- (1) 3 ½" x WOF strip. Sub-cut (8) 3 ½" squares.

From the Tear Drops - White (I), cut:

- (1) 3 ½" x WOF strip. Sub-cut (8) 3 ½" squares.

From the Berry Vine - White/Multi (J), cut:

- (1) 3 ½" x WOF strip. Sub-cut (8) 3 ½" squares.

From the Modern Melody Basics - Black (K), cut:

- (2) 6 ⅞" x WOF strips. Sub-cut (12) 6 ⅞" squares.
- (1) 6 ⅞" x WOF strip. Sub-cut (2) 6 ⅞" squares. Cut the squares across (1) diagonal to make (4) 6 ⅞" triangles.
- (2) 6 ½" x WOF strips. Sub-cut (4) 6 ½" x 12 ½" strips and (4) 6 ½" squares.

From the Berry Vine - Black/Multi (L), cut:

- (1) 6 ⅞" x WOF strip. Sub-cut (5) 6 ⅞" squares. Cut the squares across (1) diagonal to make (10) 6 ⅞" triangles.
- (1) 3 ½" x WOF strip. Sub-cut (10) 3 ½" squares.
- (7) 2 ½" x WOF strips for the binding.

From the Medallion - White/Multi (M), cut:

- (1) 3 ½" x WOF strip. Sub-cut (4) 3 ½" squares.

From the Paisley - White/Multi (N), cut:

- (1) 3 ½" x WOF strip. Sub-cut (4) 3 ½" squares.

From the Modern Melody Basics - Crimson Red (O), cut:

- (1) 6 ⅞" x WOF strip. Sub-cut (6) 6 ⅞" squares. Cut the squares across (1) diagonal to make (12) 6 ⅞" triangles.

From the Arabesque - Red (Backing), cut:

- (2) 76" x WOF strips for the backing. Sew the strips together and trim to make the 76" x 76" back.

Block Assembly

Note: The arrows in the figures represent the fabric print direction. Also, pay attention to the fabric direction and the unit orientations when assembling the various components.

1. Place (1) $6\frac{7}{8}$ " Fabric O square on top of (1) $6\frac{7}{8}$ " Fabric K square, right sides together. Draw a line across the diagonal of the top square from the upper right corner to the lower left corner (Fig. 1). Sew $\frac{1}{4}$ " away from each side of the drawn diagonal line (Fig. 1). Cut the (2) squares apart on the drawn diagonal line (Fig. 2) to make (2) half-square triangles. Trim the half-square triangles to measure $6\frac{1}{2}$ " square to make (2) Unit 1 squares (Fig. 3). Repeat to make (12) Unit 1 squares total.

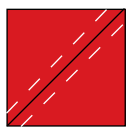


Fig. 1



Fig. 2

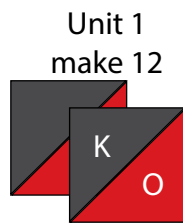


Fig. 3

2. Repeat Step 1 and refer to Figures 4 & 5 for fabric identification, placement and seam direction to make (4) $6\frac{1}{2}$ " Unit 2 squares and (2) $6\frac{1}{2}$ " Unit 3 squares.



Fig. 4



Fig. 5

3. Place (1) $6\frac{7}{8}$ " Fabric K square on top of (1) $6\frac{7}{8}$ " Fabric A square, right sides together. Draw a line across the diagonal of the top square from the upper left corner to the lower right corner (Fig. 6). Sew $\frac{1}{4}$ " away from each side of the drawn diagonal line (Fig. 6). Cut the (2) squares apart on the drawn diagonal line (Fig. 7) to make (2) half-square triangles. Trim the half-square triangles to measure $6\frac{1}{2}$ " square to make (2) Unit 4 squares (Fig. 8). Repeat to make (4) Unit 1 squares total.

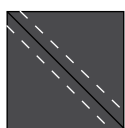


Fig. 6

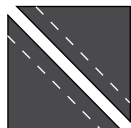


Fig. 7

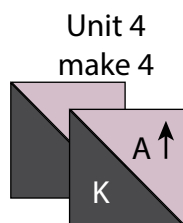


Fig. 8



Fig. 9

5. Sew (1) Fabric B $3\frac{7}{8}$ " triangle to adjacent sides of (1) $3\frac{1}{2}$ " Fabric A square. Sew (1) Fabric A $6\frac{7}{8}$ " triangle to the long side of the sewn block to make (1) Unit 6 square. Repeat to make a second Unit 6 square.

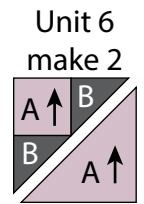


Fig. 10

6. Repeat Step 5 and refer to Figures 11-26 for fabric identification, placement, seam direction and orientation to make the indicated number of $6\frac{1}{2}$ " square units for Unit 7 through Unit 22. There will be (64) squares total.

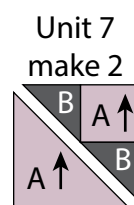


Fig. 11



Fig. 12



Fig. 13

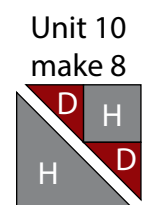


Fig. 14



Fig. 15

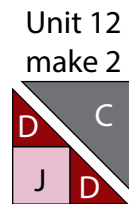


Fig. 16



Fig. 17

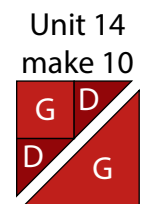


Fig. 18



Fig. 19



Fig. 20



Fig. 21



Fig. 22

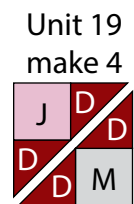


Fig. 23

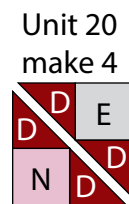


Fig. 24



Fig. 25

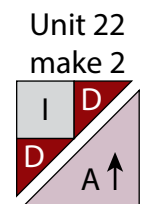


Fig. 26

Quilt Top Assembly

(Follow the Quilt Layout while assembling the quilt top.)

7. Sew together (1) $6\frac{1}{2}$ " x $12\frac{1}{2}$ " Fabric K strip, (6) Unit 1 squares and (1) $6\frac{1}{2}$ " x $12\frac{1}{2}$ " Fabric K strip, end to end and in that order, to make Row One. Repeat to make Row Ten.

8. Sew together (1) $6\frac{1}{2}$ " Fabric K square, (8) assorted blocks and (1) $6\frac{1}{2}$ " Fabric K square, in that order, to make Row Two. Repeat to make Row Nine.

BLACK, WHITE & RED HOT Quilt 1

9. Sew (10) assorted blocks together to make Row Three. Repeat to make Rows Four through Eight.

10. Sew the (10) rows together, in numerical order, to make the Center Block (Fig. 27).

11. Sew (1) 4 ½" x 60 ½" Fabric G strip to each side of the Center Block. Sew (1) 4 ½" Fabric C square to each end of (1) 4 ½" x 60 ½" Fabric G strip. Repeat to make a second strip. Sew the strips to the top and to the bottom of the Center Block to make the quilt top.

12. Layer and quilt as desired.

13. Sew the (7) 2 ½" x WOF Fabric L strips together, end to end with 45-degree seams, to make the binding. Fold this long strip in half lengthwise with wrong sides together and press.

14. Bind as desired.

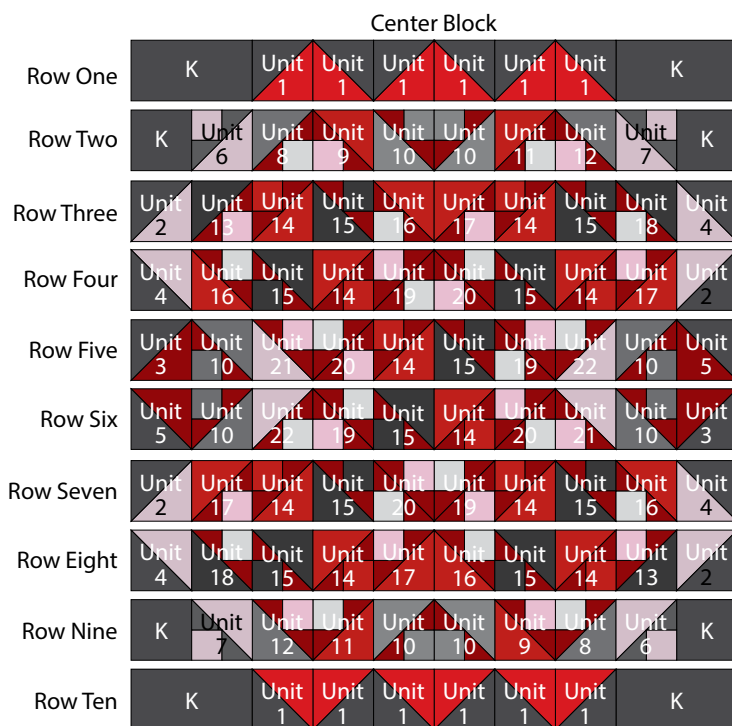
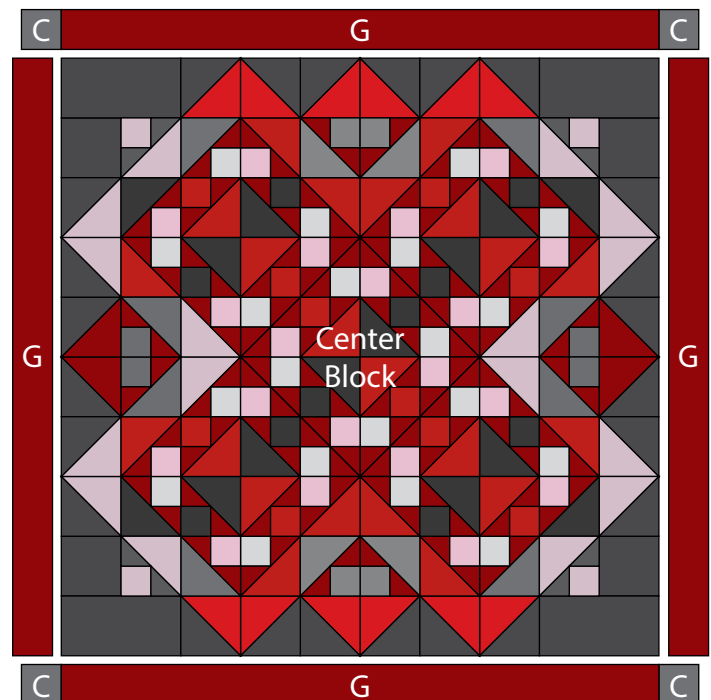


Fig. 27



Every effort has been made to ensure that all projects are error free. All the information is presented in good faith, however no warranty can be given nor results guaranteed as we have no control over the execution of instructions. Therefore, we assume no responsibility for the use of this information or damages that may occur as a result. When errors are brought to our attention, we make every effort to correct and post a revision as soon as possible. Please make sure to check www.henryglassfabrics.net for pattern updates prior to starting the project. We also recommend that you test the project prior to cutting for kits. Finally, all free projects are intended to remain free to you and are not for resale.