

# Black, White & 24 Karat



• A Free Project Sheet •  
• NOT FOR RESALE •

*By Color Principle*

Quilt Design by Heidi Pridemore



Quilt 2

Skill Level: Advanced Beginner



Henry Glass & Co., Inc.



facebook

Finished Quilt Size: 70" x 86"  
49 West 37th Street, New York, NY 10018  
tel: 212-686-5194 fax: 212-532-3525  
Toll Free: 800-294-9495  
[www.henryglassfabrics.net](http://www.henryglassfabrics.net)

Please check our website for pattern updates before starting this project.



# BLACK, WHITE & 24 KARAT

Finished Quilt Size: 70" x 86"

Quilt 2

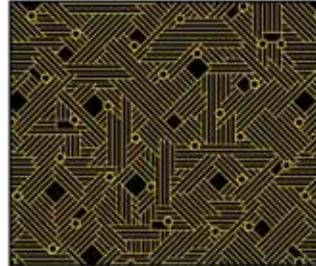
## Fabrics in the Collection



Diagonal Planes  
Black – 2865M-99



Tile Medallion  
White – 2866M-11



Circuit Board  
Black – 2867M-99



Large Floral Toile  
White – 2868M-11



Swirling Vine  
White – 2869M-11



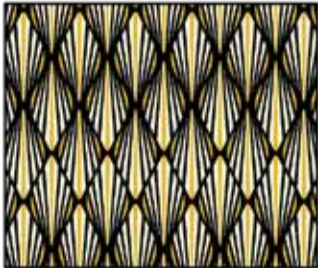
Swirling Vine  
Black – 2869M-99



Small Stones  
White – 2870M-11



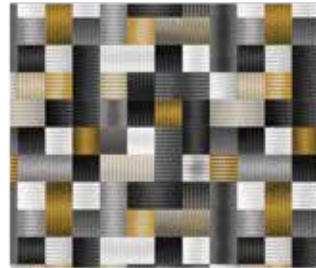
Tree Silhouette  
Black – 2871M-99



Fan Geo  
Black – 2872M-99



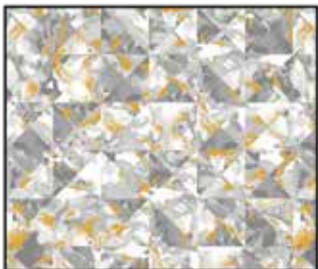
Leafy Gold  
Black – 2873M-99



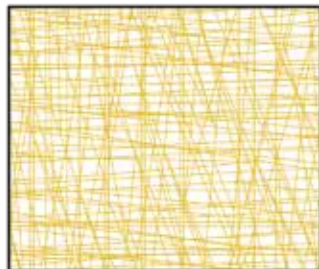
Geo Plaid  
Black – 2874M-99



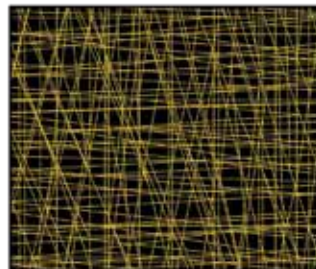
Six Sides  
Black – 2875M-99



Marble Mosaic  
White – 2876M-11



Tossed Straws  
White – 2877M-11



Tossed Straws  
Black – 2877M-99

Select Fabrics from  
Modern Melody Basics



Dark Gray  
1063-91



Black  
1063-99

# BLACK, WHITE & 24 KARAT Quilt 2

Page 3

## Materials

¼ yard	Leafy Gold - Black (A)	2873M-99
½ yard	Large Floral Toile - White (B)	2868M-11
¼ yard	Six Sides - Black (C)	2875M-99
¾ yard	Tossed Straws - White (D)	2877M-11
¼ yard	Fan Geo - Black (E)	2872M-99
¼ yard	Geo Plaid - Black (F)	2874M-99
½ yard	Circuit Board - Black (G)	2867M-99
⅞ yard	Tile Medallion - White (H)	2866M-11
1 ⅜ yards	Tossed Straws - Black (I)	2877M-99*
½ yard	Modern Melodies Basics - Black (J)	1063-99
⅔ yard	Modern Melodies Basics - Dark Gray (K)	1063-91
⅔ yard	Small Stones - White (L)	2870M-11
2 ¼ yards	Tree Silhouette - Black (M)	2871M-99
5 ¼ yards	Swirling Vine - Black (Back)	2869M-99

\*Includes binding

## Cutting Instructions

*Please note: All strips are cut across the width of fabric (WOF) from selvage to selvage edge unless otherwise noted.*

### From the Leafy Gold - Black (A), cut:

- (1) 6 ½" x WOF strip. Sub-cut (4) 6 ½" x 10 ½" strips.

### From the Large Floral Toile - White (B), cut:

- (2) 6 ½" x WOF strips. Sub-cut (8) 6 ½" x 10 ½" strips.

### From the Six Sides - Black (C), cut:

- (1) 6 ½" x WOF strip. Sub-cut (4) 6 ½" x 10 ½" strips.

### From the Tossed Straws - White (D), cut:

- (8) 1 ½" x WOF strips. Sub-cut (32) 1 ½" x 10 ½" strips.
- (8) 1 ½" x WOF strips. Sub-cut (32) 1 ½" x 8 ½" strips.

### From the Fan Geo - Black (E), cut:

- (1) 6 ½" x WOF strip. Sub-cut (5) 6 ½" squares.

### From the Geo Plaid - Black (F), cut:

- (1) 6 ½" x WOF strip. Sub-cut (4) 6 ½" squares.

### From the Circuit Board - Black (G), cut:

- (3) 1 ½" x WOF strips. Sub-cut (18) 1 ½" x 6 ½" strips.
- (5) 1 ½" x WOF strips. Sub-cut (18) 1 ½" x 8 ½" strips.

### From the Tile Medallion - White (H), cut:

- (5) 5 ¼" x WOF strips. Sub-cut (33) 5 ¼" squares. Cut the squares across both diagonals to make (132) 5 ¼" triangles.

### From the Tossed Straws - Black (I), cut:

- (5) 5 ¼" x WOF strips. Sub-cut (33) 5 ¼" squares. Cut the squares across both diagonals to make (132) 5 ¼" triangles.
- (8) 2 ½" x WOF strips for the binding.

### From the Modern Melodies Basics - Black (J), cut:

- (3) 5 ¼" x WOF strips. Sub-cut (24) 5 ¼" squares. Cut the squares across both diagonals to make (96) 5 ¼" triangles.

### From the Modern Melodies Basics - Dark Gray (K), cut:

- (4) 5 ¼" x WOF strips. Sub-cut (30) 5 ¼" squares. Cut the squares across both diagonals to make (120) 5 ¼" triangles.

### From the Small Stones - White (L), cut:

- (4) 2 ½" x WOF strips. Sew the strips together end to end with diagonal seams and cut (2) 2 ½" x 72 ½" strips.
- (3) 2 ½" x WOF strips. Sew the strips together end to end with diagonal seams and cut (2) 2 ½" x 60 ½" strips.

### From the Tree Silhouette - Black (M), cut:

- (2) 5 ½" x 76 ½" Length of Fabric (LOF) strips.
- From the remaining fabric cut (2) 5 ½" x 70 ½" WOF strips, piece as needed.

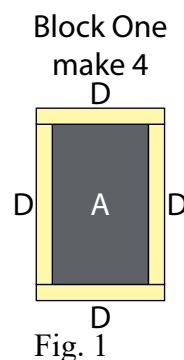
### From the Swirling Vine - Black (Backing), cut:

- (2) 94" x WOF strips for the backing. Sew the strips together and trim to make the 78" x 94" back.

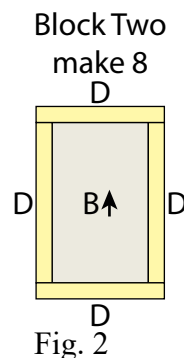
## Block Assembly

*Note: The arrows in figures represent the fabric print direction. Pay attention to the fabric and unit orientations when assembling the various components. Use a ¼" seam allowance with right sides together (RST) unless otherwise noted.*

1. Sew (1) 1 ½" x 10 ½" Fabric D strip to each side of (1) 6 ½" x 10 ½" Fabric A strip. Sew (1) 1 ½" x 8 ½" Fabric D strip to the top and to the bottom of the Fabric A strip to make (1) Block One rectangle (Fig. 1). Repeat to make (4) 8 ½" x 12 ½" Block One rectangles total.



2. Sew (1) 1 ½" x 10 ½" Fabric D strip to each side of (1) 6 ½" x 10 ½" Fabric B strip. Sew (1) 1 ½" x 8 ½" Fabric D strip to the top and to the bottom of the Fabric B strip to make (1) Block Two rectangle (Fig. 2). Repeat to make (8) 8 ½" x 12 ½" Block Two rectangles total.

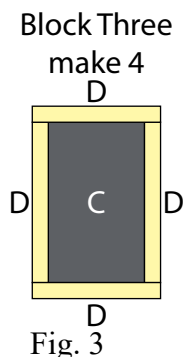




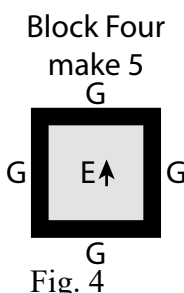
# BLACK, WHITE & 24 KARAT Quilt 2

Page 4

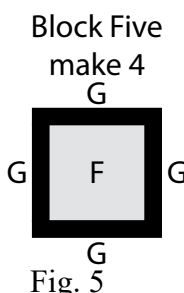
3. Sew (1) 1 ½" x 10 ½" Fabric D strip to each side of (1) 6 ½" x 10 ½" Fabric C strip. Sew (1) 1 ½" x 8 ½" Fabric D strip to the top and to the bottom of the Fabric C strip to make (1) Block Three rectangle (Fig. 3). Repeat to make (4) 8 ½" x 12 ½" Block Three rectangles total.



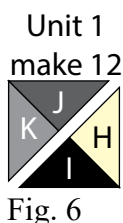
4. Sew (1) 1 ½" x 6 ½" Fabric G strip to each side of (1) 6 ½" Fabric E square. Sew (1) 1 ½" x 8 ½" Fabric G strip to the top and to the bottom of the Fabric E square to make (1) 8 ½" Block Four square (Fig. 4). Repeat to make (5) Block Four squares total.



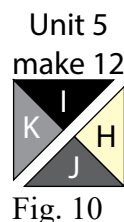
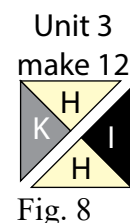
5. Sew (1) 1 ½" x 6 ½" Fabric G strip to each side of (1) 6 ½" Fabric F square. Sew (1) 1 ½" x 8 ½" Fabric G strip to the top and to the bottom of the Fabric F square to make (1) 8 ½" Block Five square (Fig. 5). Repeat to make (4) Block Five squares total.



6. Sew together (1) 5 ¼" Fabric K triangle and (1) 5 ¼" Fabric J triangle along short sides to make (1) KJ triangle. Sew together (1) 5 ¼" Fabric I triangle and (1) 5 ¼" Fabric H triangle along short sides to make (1) IH triangle. Sew together the KJ and IH triangles along their long sides to make (1) 4 ½" Unit 1 square (Fig. 6). Repeat to make (12) Unit 1 squares total.



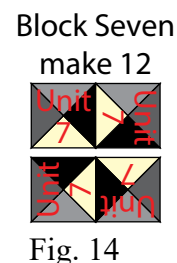
7. Repeat Step 6 and refer to Figures 7-12 for fabric identification, placement and orientation to make (12) of each unit square for Unit 2 through Unit 6 and (48) Unit 7 squares.



8. Sew together (1) Unit 1 square, (1) Unit 2 square, (1) Unit 3 square, (1) Unit 4 square, (1) Unit 5 square and (1) Unit 6 square into a 2 x 3 matrix to make (1) 8 ½" x 12 ½" Block Six rectangle (Fig. 13). Repeat to make (12) Block Six rectangles total.



9. Sew together (4) Unit 7 squares into a 2 x 2 matrix to make (1) 8 ½" Block Seven square (Fig. 14). Repeat to make (12) Block Seven squares total.



10. Sew together (1) Block One rectangle, (1) Block Six rectangle, (1) Block Two rectangle, (1) Block Six rectangle, (1) Block Two rectangle, (1) Block Six rectangle and (1) Block One rectangle, in that order from left to right, to make Row One (Fig. 15).

11. Repeat Step 10 and refer to Figure 15 for component identification, placement and orientation to make Row Two through Row Seven.

12. Sew together the (7) Rows from Steps 10-11, lengthwise and in numerical order from top to bottom, to make the 56 ½" x 72 ½" Center Block (Fig. 15).

# BLACK, WHITE & 24 KARAT Quilt 2

Page 5

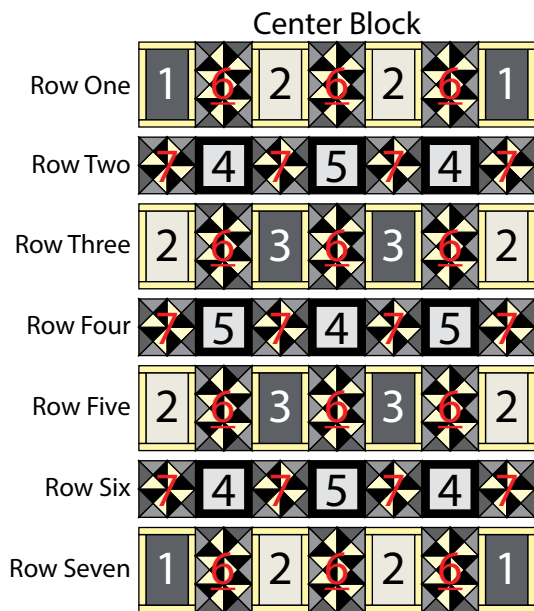


Fig. 15

## Quilt Top Assembly

*(Follow the Quilt Layout while assembling the quilt top.)*

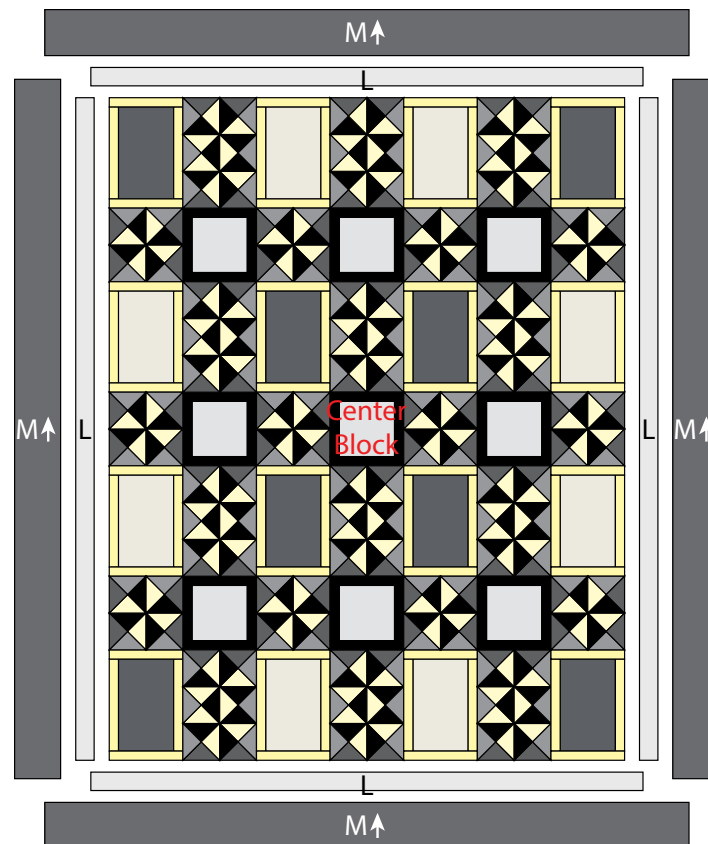
13. Sew (1) 2 ½" x 72 ½" Fabric L strip to each side of the Center Block. Sew (1) 2 ½" x 60 ½" Fabric L strip to the top and to the bottom of the Center Block.

14. Sew (1) 5 ½" x 76 ½" Fabric M strip to each side of the Center Block. Sew (1) 5 ½" x 70 ½" Fabric M strip to the top and to the bottom of the Center Block to make the quilt top.

15. Layer and quilt as desired.

16. Sew the (8) 2 ½" x WOF Fabric I strips together, end to end with 45-degree seams, to make the binding. Fold this long strip in half lengthwise with wrong sides together and press.

17. Bind as desired.



Quilt Layout

Every effort has been made to ensure that all projects are error free. All the information is presented in good faith, however no warranty can be given nor results guaranteed as we have no control over the execution of instructions. Therefore, we assume no responsibility for the use of this information or damages that may occur as a result. When errors are brought to our attention, we make every effort to correct and post a revision as soon as possible. Please make sure to check [www.henryglassfabrics.net](http://www.henryglassfabrics.net) for pattern updates prior to starting the project. We also recommend that you test the project prior to cutting for kits. Finally, all free projects are intended to remain free to you and are not for resale.