

# Black, White & 24 Karat



• A Free Project Sheet •  
• NOT FOR RESALE •

*By Color Principle*

Quilt Design by Heidi Pridemore



Quilt 1

Skill Level: Advanced Beginner



**Henry Glass & Co., Inc.**



facebook

Finished Quilt Size: 68" x 80"  
49 West 37th Street, New York, NY 10018  
tel: 212-686-5194 fax: 212-532-3525  
Toll Free: 800-294-9495  
[www.henryglassfabrics.net](http://www.henryglassfabrics.net)

Please check our website for pattern updates before starting this project.



# BLACK, WHITE & 24 KARAT

Finished Quilt Size: 68" x 80"

Quilt 1

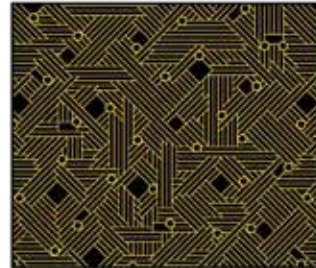
## Fabrics in the Collection



Diagonal Planes  
Black – 2865M-99



Tile Medallion  
White – 2866M-11



Circuit Board  
Black – 2867M-99



Large Floral Toile  
White – 2868M-11



Swirling Vine  
White – 2869M-11



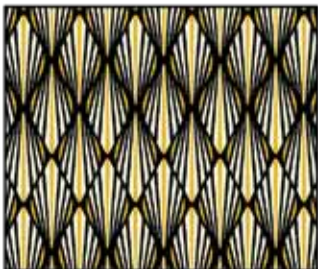
Swirling Vine  
Black – 2869M-99



Small Stones  
White – 2870M-11



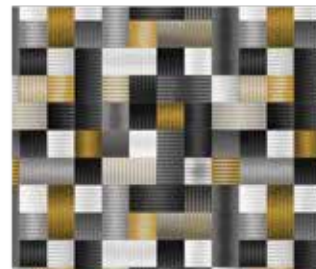
Tree Silhouette  
Black – 2871M-99



Fan Geo  
Black – 2872M-99



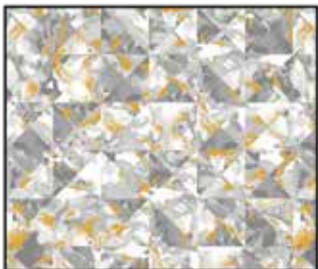
Leafy Gold  
Black – 2873M-99



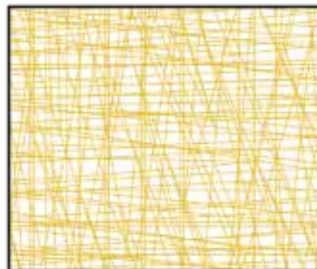
Geo Plaid  
Black – 2874M-99



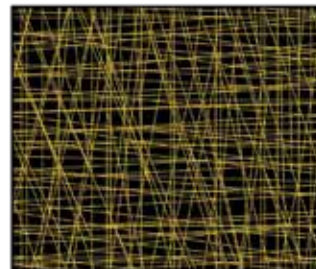
Six Sides  
Black – 2875M-99



Marble Mosaic  
White – 2876M-11



Tossed Straws  
White – 2877M-11



Tossed Straws  
Black – 2877M-99

Select Fabrics from  
Modern Melody Basics



Dark Gray  
1063-91



Black  
1063-99

# BLACK, WHITE & 24 KARAT Quilt 1

Page 3

## Materials

2/3 yard	Leafy Gold - Black (A)	2873M-99
2/3 yard	Geo Plaid - Black (B)	2874M-99
2 yards	Tile Medallion - White (C)	2866M-11
2 yards	Swirling Vine - Black (D)	2869M-99
2/3 yards	Marble Mosaic - White (E)	2876M-11
2 1/8 yards	Diagonal Planes - Black (F)	2865M-99
3/4 yard	Tossed Straws - White (G)	2877M-11
1 yard	Six Sides - Black (H)	2875M-99
2/3 yard	Tossed Straws - Black (I)	2877M-99*
5 yards	Tree Silhouette — Black (Backing)	2871M-99

\*Includes binding

## Cutting Instructions

*Please note: All strips are cut across the width of fabric (WOF) from selvage to selvage edge unless otherwise noted.*

### From the Leafy Gold - Black (A), cut:

- (1) 9 1/2" x WOF strip. Sub-cut (3) 9 1/2" squares.
- (2) 5" x WOF strips. Sub-cut (6) 5" x 9 1/2" strips.

### From the Geo Plaid - Black (B), cut:

- (2) 9 1/2" x WOF strips. Sub-cut (6) 9 1/2" squares.

### From the Tile Medallion - White (C), cut:

- (4) 5 3/8" x WOF strips. Sub-cut (24) 5 3/8" squares.
- (6) 5" x WOF strips. Sub-cut (48) 5" squares.
- (3) 2" x WOF strips. Sub-cut (18) 2" x 6 1/2" strips.
- (1) 2" x WOF strip. Sub-cut (12) 2" x 3 1/2" strips.
- (3) 2" x WOF strips. Sub-cut (48) 2" squares.

### From the Swirling Vine - Black (D), cut:

- (4) 5 3/8" x WOF strips. Sub-cut (24) 5 3/8" squares.
- (8) 4" x WOF strips. Sub-cut (48) 4" x 6 1/2" strips.
- (3) 2 1/2" x WOF strips. Sub-cut (18) 2 1/2" x 6 1/2" strips.
- (1) 2 1/2" x WOF strip. Sub-cut (12) 2 1/2" x 3 1/2" strips.

### From the Marble Mosaic - White (E), cut:

- (5) 4" x WOF strips. Sub-cut (48) 4" squares.

### From the Diagonal Planes - Black (F), cut:

- (2) 4 1/2" x 72 1/2" (length of fabric) LOF strips.

### From the Tossed Straws - White (G), cut:

- (11) 1 1/2" x WOF strips. Sew the strips together end to end with diagonal seams and cut (6) 1 1/2" x 72 1/2" strips.
- (4) 1 1/2" x WOF strips. Sew the strips together end to end with diagonal seams and cut (2) 1 1/2" x 62 1/2" strips.

### From the Six Sides - Black (H), cut:

- (4) 3 1/2" x WOF strips. Sew the strips together end to end with diagonal seams and cut (2) 4 1/2" x 74 1/2" strips.
- (4) 3 1/2" x WOF strips. Sew the strips together end to end with diagonal seams and cut (2) 4 1/2" x 68 1/2" strips.

### From the Tossed Straws - Black (I), cut:

- (8) 2 1/2" x WOF strips for the binding.

### From the Tree Silhouette - Black (Backing), cut:

- (2) 88" x WOF strips for the backing. Sew the strips together and trim to make the 76" x 88" back.

## Block Assembly

*Note: The arrows in figures represent the fabric print direction. Pay attention to the fabric and unit orientations when assembling the various components. Use a 1/4" seam allowance with right sides together (RST) unless otherwise noted.*

1. Place (1) 5" Fabric C square on the top left corner of (1) 9 1/2" Fabric B square, right sides together (Fig. 1). Sew across the diagonal of the smaller square from the upper right corner to the lower left corner (Fig. 1). Flip open the triangle formed and press. Trim away the excess fabric from behind the triangle 1/4" away from the sewn seam (Fig. 2).

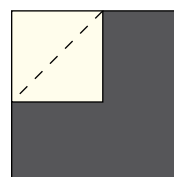


Fig. 1

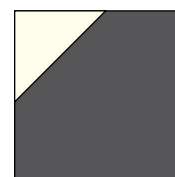


Fig. 2

2. Follow Figure 3 for the seam direction to add a 5" Fabric C square to each of the remaining corners of the 9 1/2" Fabric B square to make (1) Unit 1 square (Fig. 4).
3. Repeat Steps 1-2 to make (6) Unit 1 squares total.

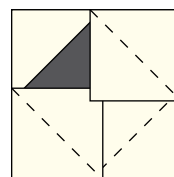


Fig. 3

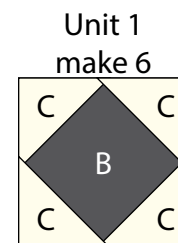


Fig. 4

4. Repeat Steps 1-2 and refer to Figure 5 for fabric identification, placement, seam direction and orientation to make (3) Unit 2 squares.

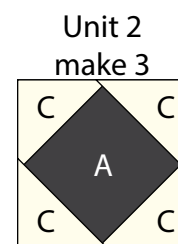


Fig. 5

# BLACK, WHITE & 24 KARAT Quilt 1

Page 4

5. Place (1) 5" Fabric C square on the left side of (1) 5" x 9 1/2" Fabric A strip, right sides together (Fig. 6). Sew across the diagonal of the square from the upper right corner to the lower left corner (Fig. 6). Flip open the triangle formed and press. Trim away the excess fabric from behind the triangle, leaving a 1/4" seam allowance (Fig. 7).



Fig. 6



Fig. 7

6. Place another 5" Fabric C square on the right side of the 5" x 9 1/2" Fabric A strip, right sides together (Fig. 8). Sew across the diagonal of the square from the upper left corner to the lower right corner (Fig. 8). Flip open the triangle formed and press. Trim away the excess fabric from behind the triangle, leaving a 1/4" seam allowance to make (1) Unit 3 strip (Fig. 9).

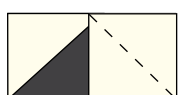


Fig. 8

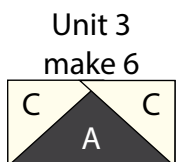


Fig. 9

8. Place (1) 5 3/8" Fabric C square on top of (1) 5 3/8" Fabric D square, right sides together. Draw a line across the diagonal of the top square (Fig. 10). Sew 1/4" away from each side of the drawn diagonal line (Fig. 10). Cut the (2) squares apart on the drawn diagonal line (Fig. 11) to make (2) half-square triangles. Trim the half-square triangles to measure 5" square to make (2) Unit 4 squares (Fig. 12). Repeat to make (48) Unit 4 squares total.



Fig. 10



Fig. 11

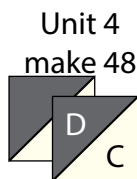


Fig. 12

9. Sew (2) Unit 4 squares together along the Fabric C sides to make (1) Unit 5 strip (Fig. 13). Repeat to make (24) Unit 5 strips total.

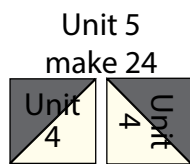


Fig. 13

10. Sew (1) 2 1/2" x 6 1/2" Fabric D strip to the left side of (1) 2" x 6 1/2" Fabric C strip lengthwise to make (1) 4" x 6 1/2" Unit 6 strip (Fig. 14). Repeat to make (18) Unit 6 strips total.

Unit 6  
make 18



Fig. 14

11. Sew (1) 2 1/2" x 3 1/2" Fabric D strip to the left side of (1) 2" x 3 1/2" Fabric C strip lengthwise to make (1) 4" x 3 1/2" Unit 7 strip (Fig. 15). Repeat to make (12) Unit 7 strips total.

Unit 7  
make 12



Fig. 15

12. Place (1) 4" Fabric E square on the top of (1) 4" x 6 1/2" Fabric D strip, right sides together, aligning the tops of the fabrics (Fig. 16). Sew across the diagonal of the small square from the upper right corner to the lower left corner (Fig. 16). Flip open the triangle formed and press. Trim away the excess fabric from behind the triangle 1/4" away from the sewn seam (Fig. 17).



Fig. 16



Fig. 17

13. Follow Figure 18 for the seam direction to add a 2" Fabric C square to the lower right corner of the Fabric D strip to make (1) Unit 8 rectangle (Fig. 19).

14. Repeat Steps 12-13 to make (24) Unit 8 rectangles total.



Fig. 18

Unit 8  
make 24

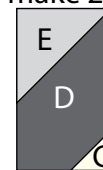


Fig. 19

15. Repeat Steps 12-13 and refer to Figure 20 for fabric identification, placement and seam direction to make (24) Unit 9 rectangles.

Unit 9  
make 24



Fig. 20



# BLACK, WHITE & 24 KARAT Quilt 1

Page 5

16. Sew together (1) Unit 8 rectangle, (1) Unit 6 strip and (1) Unit 9 rectangle, in that order from top to bottom, to make the Left Column (Fig. 21).

17. Sew (1) Unit 5 strip to the top and to the bottom of (1) Unit 1 square lengthwise to make the Center Column (Fig. 21).

18. Sew together (1) Unit 9 rectangle, (1) Unit 6 strip and (1) Unit 8 rectangle, in that order from top to bottom, to make the Right Column (Fig. 21).

19. Sew together the (3) Columns from Steps 16-18, lengthwise to make (1) 16 1/2" x 18 1/2" Block One rectangle (Fig. 21).

20. Repeat Steps 16-19 to make (6) Block One rectangles total.

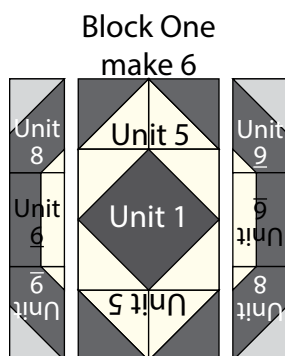


Fig. 21

21. Repeat Steps 16-19 and refer to Figure 22 for component identification, placement and orientation to make (3) Block Two rectangles.

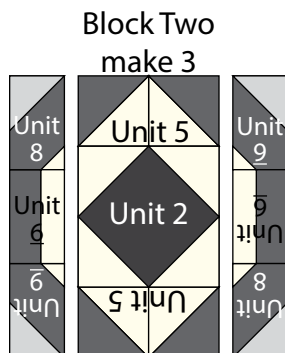


Fig. 22

22. Refer to Figure 23 and sew together (2) Unit 7 strips, (1) Unit 9 rectangle, (1) Unit 3 strip, (1) Unit 5 strip and (1) Unit 8 rectangle to make (1) 16 1/2" x 9 1/2" Block Three rectangle. Repeat to make (6) Block Three rectangles total.

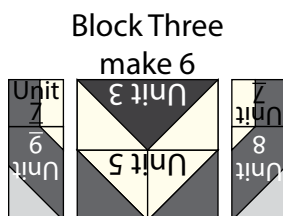


Fig. 23

23. Sew (1) 1 1/2" x 72 1/2" Fabric G strip to each side of (1) 4 1/2" x 72 1/2" Fabric F strip lengthwise to make (1) Block Four strip (Fig. 24). Repeat to make a second Block Four strip.

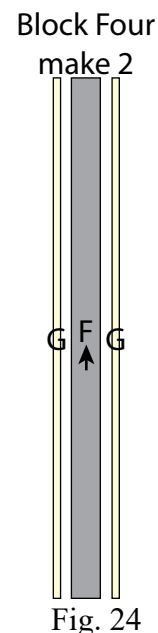


Fig. 24

24. Sew (1) Block One rectangle to the top and to the bottom of (1) Block Two rectangle. Sew (1) Block Three rectangle to the top and to the bottom of the newly sewn strip to make Left Column (Fig. 25).

25. Repeat Step 24 and refer to Figure 25 for component identification, placement and orientation to make the Center Column and the Right Column.

26. Sew together the (3) Columns from Steps 24-25 and the (2) Block Four strips, lengthwise and alternating them from left to right, to make the 60 1/2" x 72 1/2" Center Block (Fig. 25).

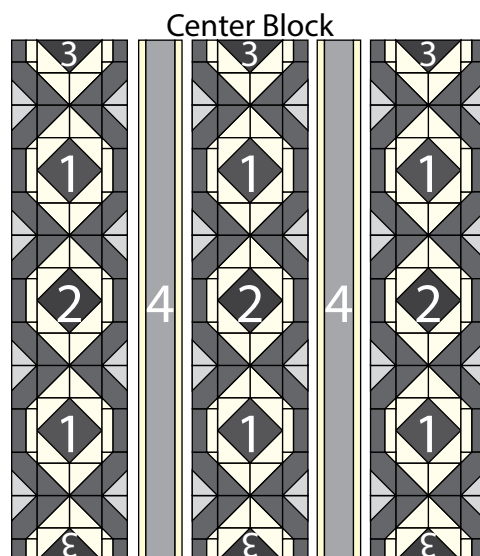


Fig. 25

# BLACK, WHITE & 24 KARAT Quilt 1

Page 6

## Quilt Top Assembly

*(Follow the Quilt Layout while assembling the quilt top.)*

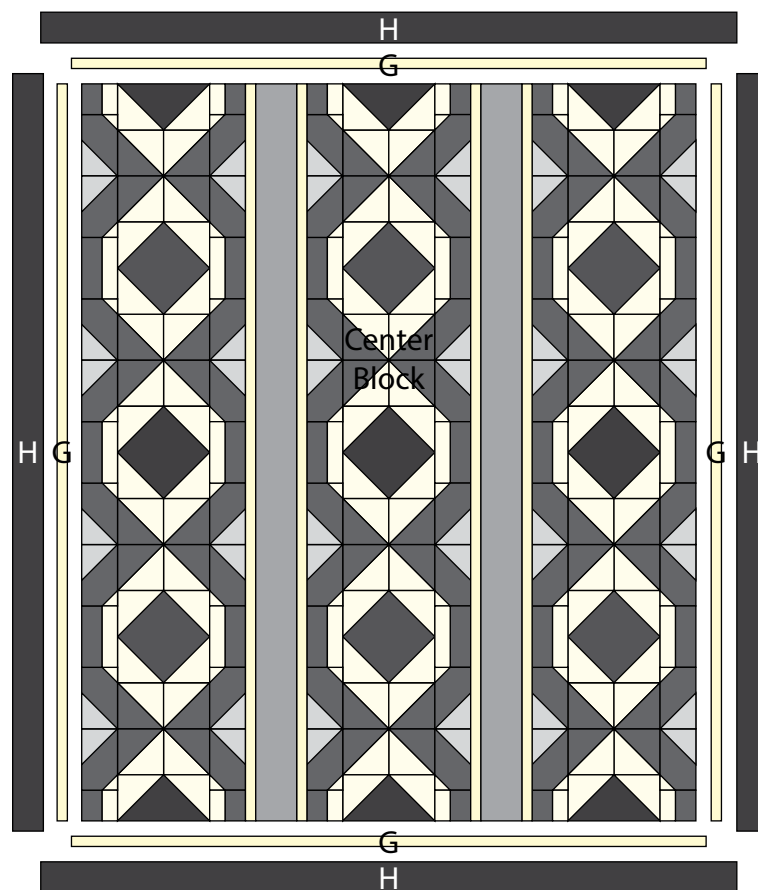
27. Sew (1)  $1\frac{1}{2}$ " x  $72\frac{1}{2}$ " Fabric G strip to each side of the Center Block. Sew (1)  $1\frac{1}{2}$ " x  $62\frac{1}{2}$ " Fabric G strip to the top and to the bottom of the Center Block.

28. Sew (1)  $3\frac{1}{2}$ " x  $74\frac{1}{2}$ " Fabric H strip to each side of the Center Block. Sew (1)  $3\frac{1}{2}$ " x  $68\frac{1}{2}$ " Fabric H strip to the top and to the bottom of the Center Block to make the quilt top.

29. Layer and quilt as desired.

30. Sew the (8)  $2\frac{1}{2}$ " x WOF Fabric I strips together, end to end with 45-degree seams, to make the binding. Fold this long strip in half lengthwise with wrong sides together and press.

31. Bind as desired.



Quilt Layout

*Every effort has been made to ensure that all projects are error free. All the information is presented in good faith, however no warranty can be given nor results guaranteed as we have no control over the execution of instructions. Therefore, we assume no responsibility for the use of this information or damages that may occur as a result. When errors are brought to our attention, we make every effort to correct and post a revision as soon as possible. Please make sure to check [www.henryglassfabrics.net](http://www.henryglassfabrics.net) for pattern updates prior to starting the project. We also recommend that you test the project prior to cutting for kits. Finally, all free projects are intended to remain free to you and are not for resale.*

©2021 Henry Glass & Co., Inc.