



BRIMMING OVER

58 1/2" X 58 1/2" Patchwork and Applique Quilt
Six-Part Stitch-Along Program Featuring Kim Diehl's *Quiet Grace* Collection
~ Fabric Requirements ~

To streamline our stitch-along program and provide the best possible experience for both quilters *and* shops, we've made a small change that we feel will make a big impact! Rather than itemizing the yardages on a month-by-month basis, requiring that installment kits be cut and distributed to coincide with this schedule, we've prepared yardage requirements for the *entire project* in one summarized list, enabling all fabrics to be provided to participants with the first month's handout.

The benefit to shops from this change will include much less time for cutting and organizing, fewer packages for distribution and shipping, lower postage expense, and freed-up time for other areas of your business! Quilters will enjoy more efficient use of their fabrics, and have greater versatility in selecting prints to personalize the look of their quilt.

Applique motifs are very basic and easily stitched, but Kim will include tips in the handouts to provide ideas for simple patchwork substitutions to accommodate quilters who prefer piecing only.

One half yard of black berry sprigs print (926-99) has been included in the following list for binding, and itemized separately from the remainder needed for the patchwork requirements; backing requirement is *not* included. Yardage amounts are for planning and ordering purposes only, **please refer to the published monthly handouts when preparing and cutting kits.**



916-30 ♦ fat quarter



921-11 ♦ fat quarter



928-33 ♦ 3/8 yard



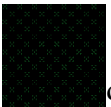
916-88 ♦ fat quarter



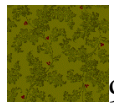
922-77 ♦ fat quarter



929-11 ♦ fat quarter



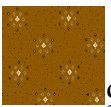
917-99 ♦ fat quarter



923-66 ♦ 1/2 yard



929-22 ♦ fat quarter



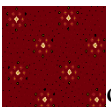
918-33 ♦ fat quarter



924-66 ♦ fat quarter



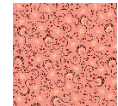
930-88 ♦ fat quarter



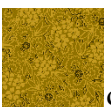
918-88 ♦ fat quarter



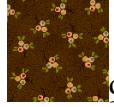
925-66 ♦ fat quarter



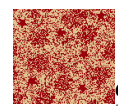
931-22 ♦ fat quarter



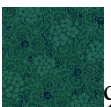
919-44 ♦ fat quarter



926-33 ♦ 3/8 yard



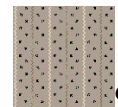
932-88 ♦ fat quarter



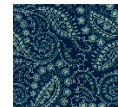
919-77 ♦ fat quarter



926-66 ♦ fat quarter



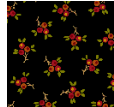
933-90 ♦ fat quarter



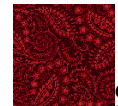
934-77 ♦ fat quarter



919-93 ♦ 1/2 yard



926-99 ♦ fat quarter
(plus 1/2 yard for binding)



934-88 ♦ fat quarter



920-30 ♦ 3/8 yard



927-11 ♦ fat quarter



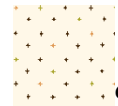
935-40 ♦ 1 1/4 yards



920-44 ♦ fat quarter



927-30 ♦ fat quarter



936-40 ♦ 1 1/4 yards



937-40 ♦ 1 1/4 yards