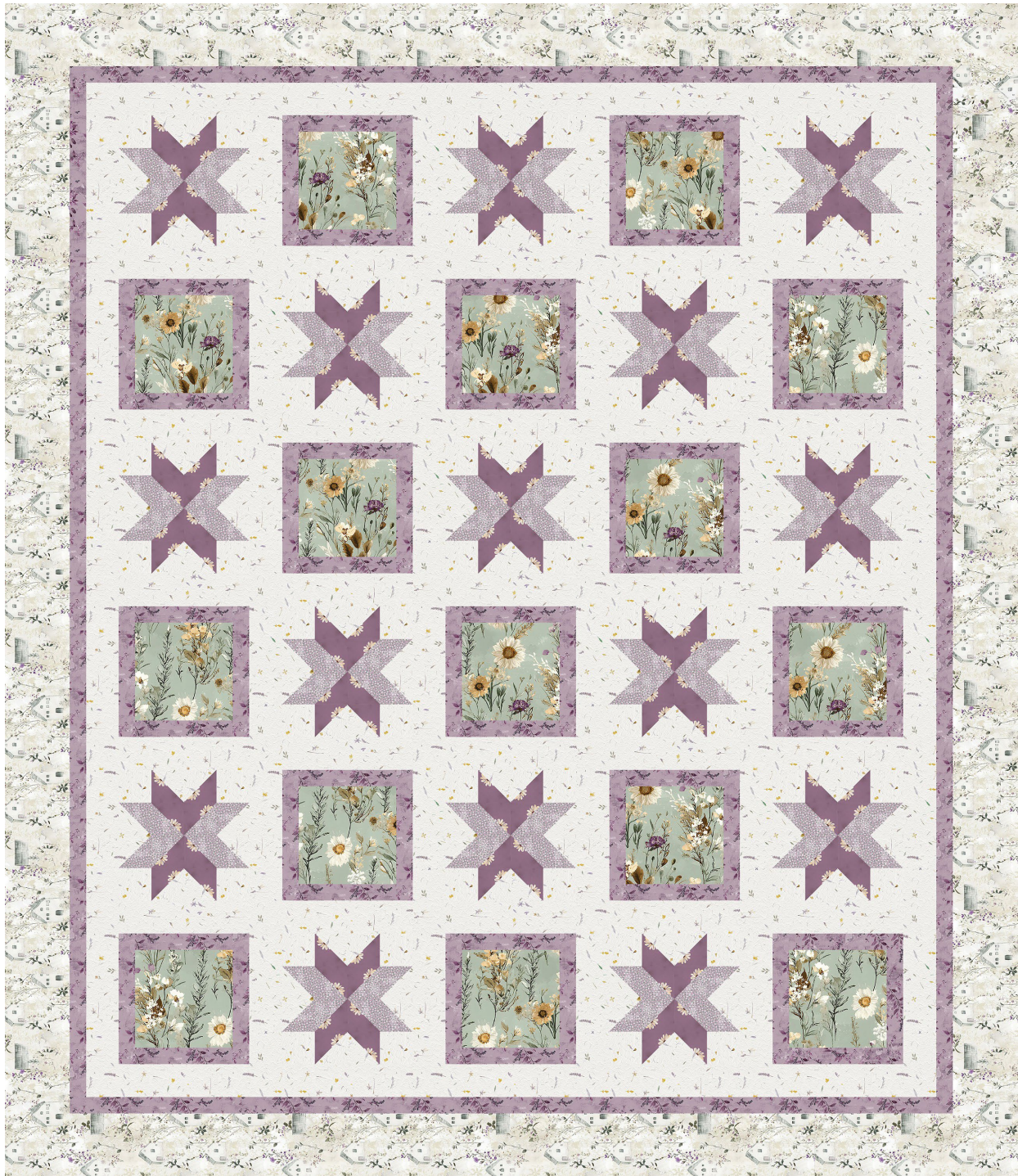


# Country Life

by Goldi L. Designs



Quilt size: 62" x 72" (1.57m x 1.83m)

Skill Level: Advanced Beginner

**Farmer's Keepsake Quilt**  
Designed by Farmer's Daughters Quilts  
[www.fdquilts.com](http://www.fdquilts.com)

## Farmer's Keepsake Quilt Ordering Guide

SKU	Yards	Meters	6 Kits	12 Kits
 2947-53	2/3 yd	0.61m	1 bolt	1 bolt
 2950-14*	1 5/8 yds	1.49m	1 bolt	2 bolts
 2951-14	2 1/8 yds	1.94m	1 bolt	2 bolts
 2953-51	7/8 yd	0.80m	1 bolt	1 bolt
 2954-61	5/8 yd	0.57m	1 bolt	1 bolt
 2955-52	5/8 yd	0.57m	1 bolt	1 bolt

### 44" Backing Fabric Option

2948-53	4 yds	3.66m	2 bolts	4 bolts
---------	-------	-------	---------	---------

### 108" Backing Fabric Option

1002-15	2 1/3 yds	2.13m	1 bolt	2 bolts
---------	-----------	-------	--------	---------

\* Indicates binding fabric.

FQ = 18" x 22" (0.45m x 0.55m)

All fabric quantities are based on 15yd bolts unless otherwise indicated.



2947-53  
Daisy  
Pansy



2950-14\*  
Country House  
Cream



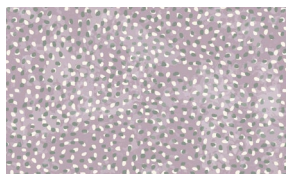
2951-14  
Pressed Paper  
Cream



2953-51  
Lavender  
Lavender



2954-61  
Wildflowers  
Sage



2955-52  
Seeds  
Lilac