



Finished Size of Project: **53" x 53" (1.35m x 1.35m)**

Finished Block Size: **6" x 6" (15.24cm x 15.24cm)**

Fabric Collection Name & Fabric Designer: **Love Bugs by Janet Nesbitt**

Technique: **Pieced & Applique**

Designed by: **Denise Russell of Pieced Brain**

Skill Level: **Advanced Beginner**

Tech Edited by: **Julie Kentner**

Ladies Love Flowers Quilt



Fabric Requirements

DESIGN	COLOR	ITEM ID	YARDAGE
(A) Bugs & Flowers	Light Blue	3573-17	5/8 yard (0.57m)
(B) Bugs & Flowers	Light Pink	3573-22	5/8 yard (0.57m)
(C) Small Flowers & Bug Dots	Dusty Aqua	3574-17	1/4 yard (0.23m)
(D) Small Flowers & Bug Dots	Pink	3574-22	1/3 yard (0.30m)
(E) Small Flowers & Bug Dots	Yellow	3574-33	1/4 yard (0.23m)
(F) Calico	Light Blue	3575-17	1/4 yard (0.23m)
(G) Word Print	Cream	3576-44	1/3 yard (0.30m)
(H) Daisy Allover	Gold	3578-33	1/4 yard (0.23m)
(I) Daisy Allover	Red	3578-88	1/3 yard (0.30m)
(J) Textured Dots	Red	3579-88	1/8 yard (0.11m)
(K) Diamond Plaid	Light Green	3580-60	1/4 yard (0.23m)
(L) Tonal Allover	Red	3581-88	1/8 yard (0.11m)
(M) Tonal Allover	Black	3581-99	1/8 yard (0.11m)
(N) Binding Stripe	Charcoal	3582-95*	5/8 yard (0.57m)
(O) Love Bug Panel	Light Blue	3583P-17	1 yard (0.91m)
(P) Linen Closet	White Wash	3071-30	1 1/4 yard (1.14m)

* includes binding



(A)



(B)



(C)



(D)



(E)



(F)



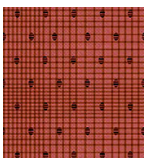
(G)



(H)



(I)



(J)



(K)



(L)



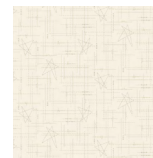
(M)



(N)



(O)



(P)

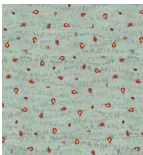
All possible care has been taken to ensure the accuracy of this pattern. We are not responsible for printing errors or the manner in which individual work varies.

Please read the instructions carefully before starting this project. If kitting it is recommended a sample is made to confirm accuracy.

All free projects are intended to remain free and are not for resale.

Backing *(Purchased Separately)*

44" (1.12m) wide			
Word Print	Light Blue	3576-17	3½ yards (3.20m)
OR			
108" (2.74m) wide			
Meadow 108"	Red	3560W-88	1¾ yard (1.60m)



Backing
44"



Backing
108"

Additional Materials:

- 100% Cotton Thread
- Fusible Web (approx. ¼ yard)
- Batting: 61" x 61" (1.55m x 1.55m)

Cutting

Notes:

- Please check www.henryglassfabrics.net for pattern updates prior to starting the project.
- All strips are cut across the Width Of Fabric (WOF) from selvedge to selvedge edge unless otherwise noted.
- Label cut pieces with letter identifier for easier assembly.

Fabric A, cut:

(6) 3" x WOF (Border 5)

Fabric B, cut:

(3) 2" x WOF; subcut
(12) 2" x 3½" rectangles
(24) 2" squares
(4) 2½" x WOF (Border 3)

Fabrics C, E, F, H, K, from each cut:

(3) 2" x WOF; subcut
(12) 2" x 3½" rectangles
(24) 2" squares

Fabric D, cut:

(4) 1½" x WOF (Border 2)

Fabric G, cut:

(1) 6½" x WOF; subcut
(8) 1" x 6½" rectangles
(8) 2¾" x 5½" rectangles
(16) 1½" squares

Fabric I, cut:

(4) 1½" x WOF (Border 1)

Fabrics J and L, from each cut:

(4) Wings (using template)

Fabric M, cut:

(1) 2" x WOF; subcut
(4) 2" x 5½" rectangles
(8) Antennae (using templates)

Fabric N, cut:

(6) 2½" x WOF (Binding)

Fabric O:

Trim panel to 28½" x 28½"

Fabric P, cut:

(6) 3½" x WOF strips; subcut
(120) 2" x 3½" rectangles
(8) 2" x WOF strips; subcut
(144) 2" squares

Sewing

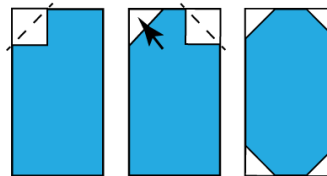
Notes:

- All seam allowances are $\frac{1}{4}$ " (0.64cm).
 - Sew pieces with right sides together (RST) using neutral or coordinating thread.
 - Press seam allowances open unless otherwise indicated.
1. Draw a diagonal line on the wrong side of (16) $1\frac{1}{2}$ " **Fabric G** squares. With right sides together (RST), place one marked square on the corner of (1) $2" \times 5\frac{1}{2}"$ **Fabric M** rectangle. Stitch on the drawn line (notice the direction of the stitching line). Trim the seam allowance to $\frac{1}{4}$ " and press open toward the corner. Repeat with the other corners of the same rectangle. Repeat with the remaining $1\frac{1}{2}$ " **Fabric G** squares and $2" \times 5\frac{1}{2}"$ **Fabric M** rectangles to make (4) ladybug bodies (**Fig. 1** and Snowballed Rects).

Fig. 1



Snowballed Rects



- Sew (1) $2\frac{3}{4}$ " x $5\frac{1}{2}$ " **Fabric G** rectangle to the left and right sides of the ladybug body. Press seams away from the center. Sew (1) 1" x $6\frac{1}{2}$ " **Fabric G** rectangle to the top and bottom of the ladybug body. Repeat to complete (4) $6\frac{1}{2}$ " background blocks for the ladybugs (**Figs 2, 2a**).

Fig. 2



Fig. 2a



- Place the wing and the antennae shapes onto a lightbox or windowpane. Layer the fusible web onto them and trace (8) wings and (4) *each* of the antennae. Cut each shape $\frac{1}{8}$ " outside the outline and fuse to the wrong side of the fabrics: (4) **Fabric J** wings, (4) **Fabric L** wings, and (8) **Fabric M** antennae - (4) of each orientation. Cut on the outline and remove the paper backing.
- Referring to the cover quilt image as a guideline, position the appliqué shapes on the background blocks. Fuse according to the manufacturer's instructions. Machine appliqué using matching thread and the blanket stitch. Make (4) $6\frac{1}{2}$ " blocks (**Fig. 3**).

Fig. 3



All possible care has been taken to ensure the accuracy of this pattern. We are not responsible for printing errors or the manner in which individual work varies.

Please read the instructions carefully before starting this project. If kitting it is recommended a sample is made to confirm accuracy.

All free projects are intended to remain free and are not for resale.

5. Gather (24) 2" **Fabric B** squares and (12) 2" x 3½" **Fabric P** rectangles. Draw a diagonal line on the wrong side of the **Fabric B** squares. Noting the direction of the stitching line, and with right sides together (RST), layer (1) marked **Fabric B** square on the left short end of (1) **Fabric P** rectangle. Stitch on the drawn line. Trim ¼" away from the seam line and press toward the corner. Similarly, stitch a second 2" **Fabric B** square to the opposite end of the same rectangle. Repeat to make (12) 2" x 3½" flying-geese units (**Flying Geese Technique, Fig. 4**).

Flying Geese Technique

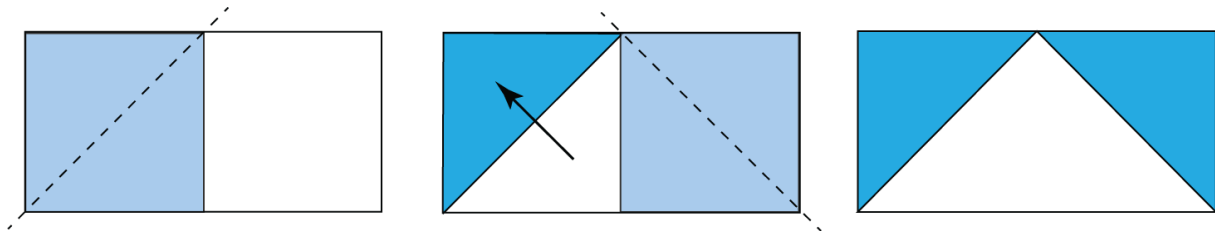


Fig. 4



Repeat Step 5 with (60) 2" x 3½" **Fabric P** rectangles and (24) 2" squares each of **Fabrics C, E, F, H, and K** to make (12) 2" x 3½" flying-geese units of each fabric (**Figs 4a - 4e**).

Fig. 4a



Fig. 4b



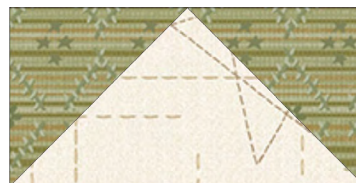
Fig. 4c



Fig. 4d



Fig. 4e



All possible care has been taken to ensure the accuracy of this pattern. We are not responsible for printing errors or the manner in which individual work varies.

Please read the instructions carefully before starting this project. If kitting it is recommended a sample is made to confirm accuracy.

All free projects are intended to remain free and are not for resale.

6. Repeat Step 5 to make (72) assorted flying-geese units with (144) 2" **Fabric P** squares and (12) 2" x 3½" rectangles of **Fabrics B, C, E, F, H, and K (Figs 5-5e).**

Fig. 5



Fig. 5a



Fig. 5b



Fig. 5c



Fig. 5d



Fig. 5e



7. Gather (48) 2" x 3½" **Fabric P** rectangles and the flying geese units made in Steps 5 and 6. Arrange into (4) rows of (2) units each, as shown (**Figs 6-6g.**)

Fig. 6



Fig. 6a



Fig. 6b



Fig. 6c

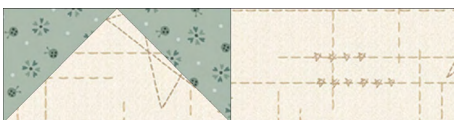


Fig. 6d



Fig. 6e



Fig. 6f



Fig. 6g



All possible care has been taken to ensure the accuracy of this pattern. We are not responsible for printing errors or the manner in which individual work varies.

Please read the instructions carefully before starting this project. If kitting it is recommended a sample is made to confirm accuracy.

All free projects are intended to remain free and are not for resale.

Sew the units into rows, pressing seams in opposite directions. Sew the rows together to make (12) 6½" blocks of each fabric combination (**Figs 6h-6i**).

Fig. 6h



Fig. 6i



Top Assembly

Note: Follow the **Quilt Layout** Diagram (page 11) while assembling the top.

8. Border 1: Trim (2) 1½" x WOF **Fabric I** strips to 28½". Sew the strips to opposite sides of the **Fabric O** panel. Press seams away from the center. Trim (2) 1½" x WOF **Fabric I** strips to 30½" and sew them to the top and bottom of the panel. Press as before.
9. Border 2: Repeat Step 8 with (4) 1½" x WOF **Fabric D** strips. Trim (2) to 1½" x 30½" for the left and right sides and (2) to 1½" x 32½" for the top and bottom of the panel. Press as before.
10. Border 3: Repeat Step 8 with (4) 2½" x WOF **Fabric B** strips. Trim (2) to 2½" x 32½" for the left and right sides and (2) to 2½" x 36½" for the top and bottom of the panel. Press as before. The quilt measures 36½" x 36½" to this point.
11. Border 4: Refer to the cover quilt photo for block placement and orientation (blocks will point toward the center). Arrange (2) rows with (6) alternating blocks. Sew the blocks together in each row. Press, then sew the pieced borders to the left and right sides of the quilt center. Press seams toward the center. Repeat to make (2) pieced rows, adding (1) ladybug block to each short end (note the orientation of the blocks and ladybugs for each row). Sew to the top and bottom of the quilt center. Press.

All possible care has been taken to ensure the accuracy of this pattern. We are not responsible for printing errors or the manner in which individual work varies.

Please read the instructions carefully before starting this project. If kitting it is recommended a sample is made to confirm accuracy.

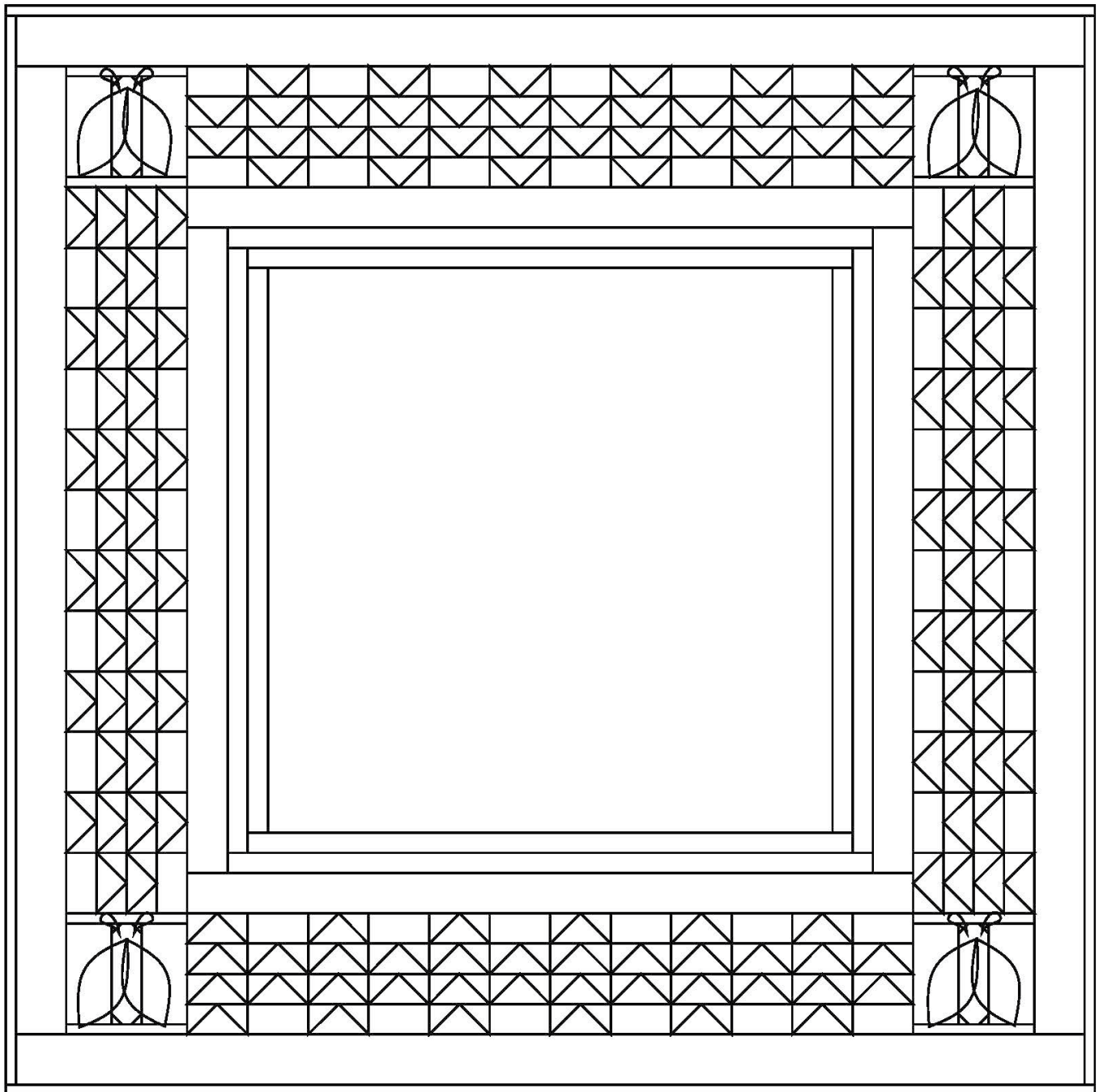
All free projects are intended to remain free and are not for resale.

12. Border 5: Sew (6) 3" x WOF **Fabric A** strips together end to end using diagonal seams. Measure the vertical length of the quilt top through the center and cut (2) border strips to that length. Sew one strip to each side of the quilt top, pressing seams toward the borders. Measure the width of the quilt top through the center. Cut (2) border strips to that length and sew to the top and bottom of the quilt top. Press seams toward the borders.

Finishing

13. Sew together (6) 2½" x WOF **Fabric N** binding strips end to end using diagonal seams. Press seams open. Press the binding strip in half with wrong sides together and set aside until the quilt is ready for binding.
14. Layer the backing (wrong side up), batting, and quilt top (right side up). Baste the layers together and quilt as desired. Trim excess batting and backing even with the top of the quilt.
15. Leaving an 8" tail of binding and beginning along an edge of the quilt top, matching the raw edges of the binding to the raw edges of the quilt. Sew the binding to the outside edge around all four sides and miter corners. Stop sewing approximately 12" from where you started and backstitch.
16. Lay both loose ends of the binding flat along the quilt edge. Where these two loose ends meet, fold them back onto themselves and press to form a crease. Using this crease as your stitching line, sew the two open ends of the binding together, with the right sides matching. Trim the seam to ¼" and press it open. Finish sewing the binding to the quilt.
17. Turn binding over the raw edge to the back of the quilt and hand or machine stitch in place.

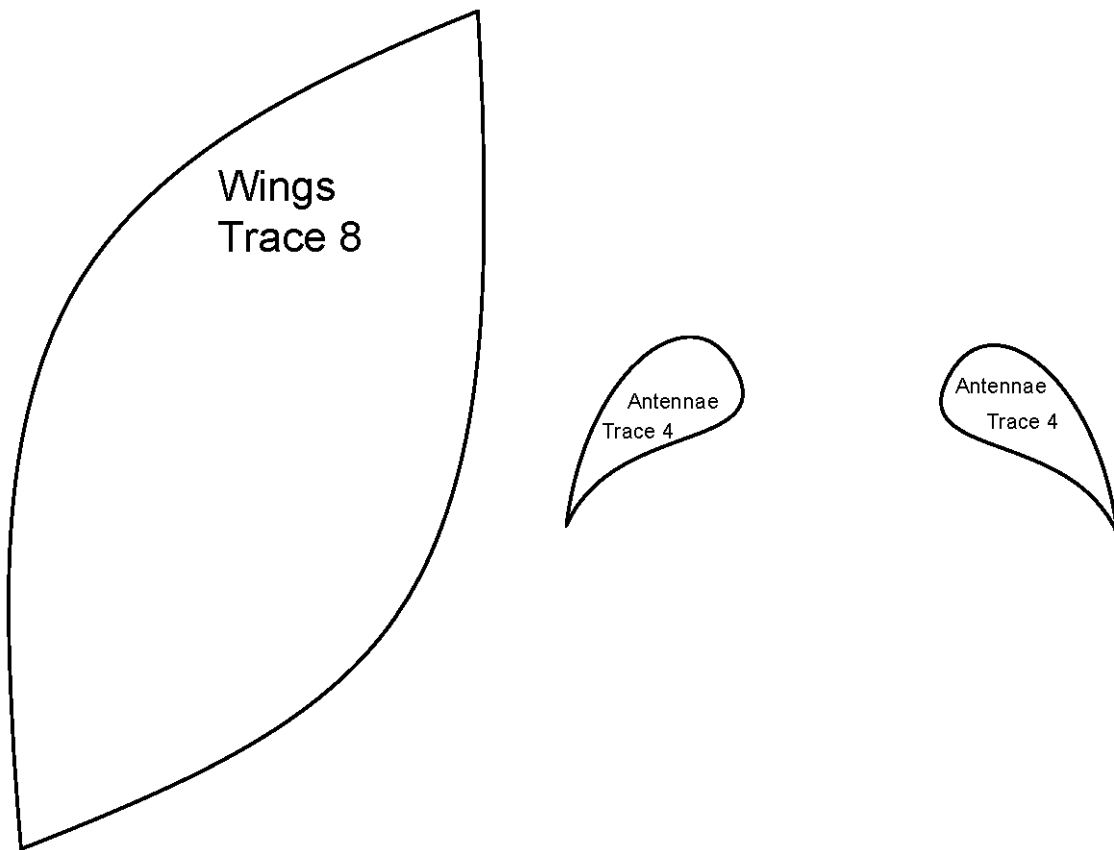
Quilt Layout



All possible care has been taken to ensure the accuracy of this pattern. We are not responsible for printing errors or the manner in which individual work varies.

Please read the instructions carefully before starting this project. If kitting it is recommended a sample is made to confirm accuracy.

All free projects are intended to remain free and are not for resale.



This square should
measure 1" x 1"
(2.54cm x 2.54cm)
when printed.

*** Measure templates before cutting to confirm printing at 100%***

All possible care has been taken to ensure the accuracy of this pattern. We are not responsible for printing errors or the manner in which individual work varies.

Please read the instructions carefully before starting this project. If kitting it is recommended a sample is made to confirm accuracy.

All free projects are intended to remain free and are not for resale.