

Western View

by Denise Sullivan



Quilt size: 59" x 67 1/2" (1.51m x 1.73m)








Skill Level: Advanced Beginner

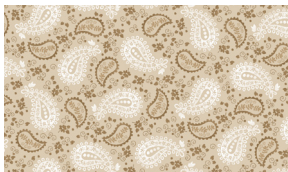
Day Dreaming Throw

Designed by Karen Bialik of The Fabric Addict

www.fabricaddict.net

Day Dreaming Throw Ordering Guide

SKU	Yards	Meters	6 Kits	12 Kits
 1595-33	2/3 yds	0.61m	1 bolt	1 bolt
 1596-44	1/2 yds	0.46m	1 bolt	1 bolt
 1597-88	3/4 yds	0.69m	1 bolt	1 bolt
 1598-33	7/8 yds	0.80m	1 bolt	1 bolt
 1601-33	1 yd	0.91m	1 bolt	1 bolt
 1603-44	2 yds	1.83m	1 bolt	2 bolts
 1604P-33	2/3 yds	0.61m	1 bolt	1 bolt
3200-38	5/8 yds	0.57m	1 bolt	1 bolt
3200-77*	1 3/4 yds	1.60m	1 bolt	2 bolts
Backing Fabric Option				
1600-87	4 1/4 yds	3.5m	2 bolts	4 bolts
* Indicates binding fabric. FO = 18" x 22" (0.45m x 0.55m) All fabric quantities are based on 15yd bolts unless otherwise indicated.				



1596-44
Paisley
Beige



1597-88
Western Motifs
Red



1598-33
Aztec
Multi



1601-33
Western Novelty Stripe
Multi



1603-44
Western Motifs with Feathers
Beige



3200-38
Brushstrokes
Dk. Brown



3200-77*
Brushstrokes
Indigo



1604P-33
Panel
Multi



1595-33
Block Panel
Multi