

Mariakerke

by Michele Yeo



Quilt size: 87" x 103" (2.21m x 2.62m)

Skill Level: Advanced Beginner

Mariakerke Stars Quilt

Designed by Michelle Yeo of Michelle Yeo Quilt Designs

www.michelleyequilt designs.com

Mariakerke Stars Quilt Ordering Guide

SKU	Yards	Meters	6 Kits	12 Kits
3358-38*	1 yd	0.91m	1 bolt	1 bolt
3358-76	FO	0.23m	1 bolt	1 bolt
3360-44	3 1/2 yds	3.20m	2 bolts	3 bolts
3361-44	FO	0.23m	1 bolt	1 bolt
3361-76	FO	0.23m	1 bolt	1 bolt
3362-77	FO	0.23m	1 bolt	1 bolt
3362-88	FO	0.23m	1 bolt	1 bolt
3363-44	1 1/4 yds	1.14m	1 bolt	2 bolts
3363-77	FO	0.23m	1 bolt	1 bolt
3363-88	FO	0.23m	1 bolt	1 bolt
3364-17	FO	0.23m	1 bolt	1 bolt
3364-22	FO	0.23m	1 bolt	1 bolt
3365-44	6 1/2 yds	5.94m	3 bolts	6 bolts
3366-38	FO	0.23m	1 bolt	1 bolt
3366-73	FO	0.23m	1 bolt	1 bolt
3366-85	FO	0.23m	1 bolt	1 bolt
Backing Fabric Option				
3357-77	8 yds	7.32m	4 bolts	7 bolts

* Indicates binding fabric.
FO = 18" x 22" (0.45m x 0.55m)
All fabric quantities are based on 15yd bolts unless otherwise indicated.



3358-38*
Serpentine Stripe
Caramel



3358-76
Serpentine Stripe
Teal



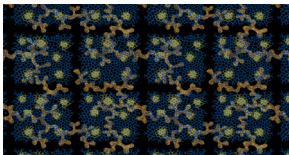
3360-44
Paisley Trails
Cream



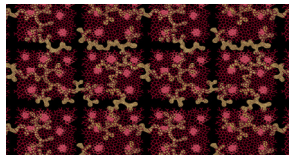
3361-44
Coral Plaid
Cream



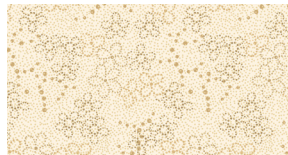
3361-76
Coral Plaid
Teal



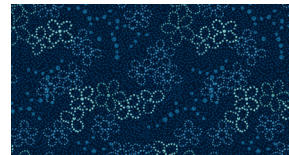
3362-77
Coral Plaid
Prussian Blue



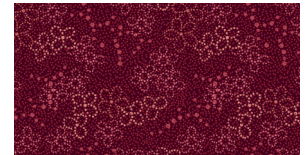
3362-88
Coral Plaid
Burgundy



3363-44
Dotty Floral Texture
Cream



3363-77
Dotty Floral Texture
Prussian Blue



3363-88
Dotty Floral Texture
Burgundy



3364-17
Dainty Vines
Lt Blue



3364-22
Dainty Vines
Lt Pink



3365-44
Border Stripe
Cream



3366-38
Diagonal Serpentine Floral
Caramel Red



3366-73
Diagonal Serpentine Floral
Blue Brown



3366-85
Diagonal Serpentine Floral
Pink Aubergine

Henry Glass & Co. Inc.