

Mariakerke

by Michele Yeo



Quilt size: 82" x 82" (2.08m x 2.08m)

Skill Level: Intermediate

Mariakerke Dahlia Quilt

Designed by Michelle Yeo of Michelle Yeo Quilt Designs
www.michelleyeoquilt.com

 **Henry Glass & Co., Inc.**

Mariakerke Dahlia Quilt Ordering Guide

SKU	Yards	Meters	6 Kits	12 Kits
3357-44	2 yds	1.83m	1 bolt	2 bolts
3358-38	1/2 yds	0.46m	1 bolt	1 bolt
3358-76*	3 yds	2.74m	2 bolts	3 bolts
3359-44	1/2 yds	0.46m	1 bolt	1 bolt
3360-44	1/2 yds	0.50m	1 bolt	1 bolt
3361-76	1/2 yds	0.50m	1 bolt	1 bolt
3362-88	1/3 yds	0.30m	1 bolt	1 bolt
3363-44	1/2 yds	0.46m	1 bolt	1 bolt
3363-77	1/3 yds	0.30m	1 bolt	1 bolt
3364-17	1/3 yds	0.30m	1 bolt	1 bolt
3364-22	1/2 yds	0.46m	1 bolt	1 bolt
3365-44	2 5/8 yds	2.40m	2 bolts	3 bolts
3366-73	1/2 yds	0.46m	1 bolt	1 bolt
3366-85	1/2 yds	0.46m	1 bolt	1 bolt
Backing Fabric Option				
3359-17	7 1/2 yds	6.86m	4 bolts	7 bolts
<small>* Indicates binding fabric. FO = 18" x 22" (0.45m x 0.55m) All fabric quantities are based on 15yd bolts unless otherwise indicated.</small>				



3357-44
Master Floral
Cream



3358-38
Serpentine Stripe
Caramel



3358-76*
Serpentine Stripe
Teal



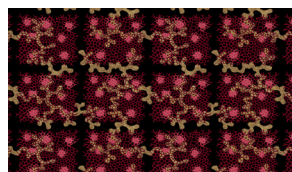
3359-44
Feathers and Vines
Cream



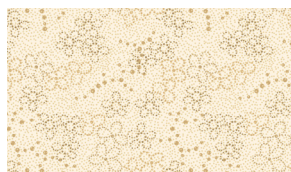
3360-44
Paisley Trails
Cream



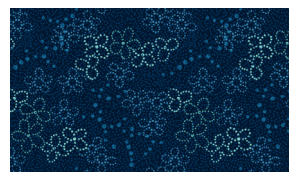
3361-76
Floral Leaf Trellis
Teal



3362-88
Coral Plaid
Burgundy



3363-44
Dotty Floral Texture
Cream



3363-77
Dotty Floral Texture
Prussian Blue



3364-17
Dotty Floral Texture
Lt Blue



3364-22
Dotty Floral Texture
Lt Pink



3365-44
Border Stripe
Cream



3366-73
Diagonal Serpentine Floral
Blue Brown



3366-85
Diagonal Serpentine Floral
Pink Aubergine

****The Giant Dahlia Template Set, available for purchase at michelleyeoquiltdesigns.com, is recommended (not required) for making this pattern****