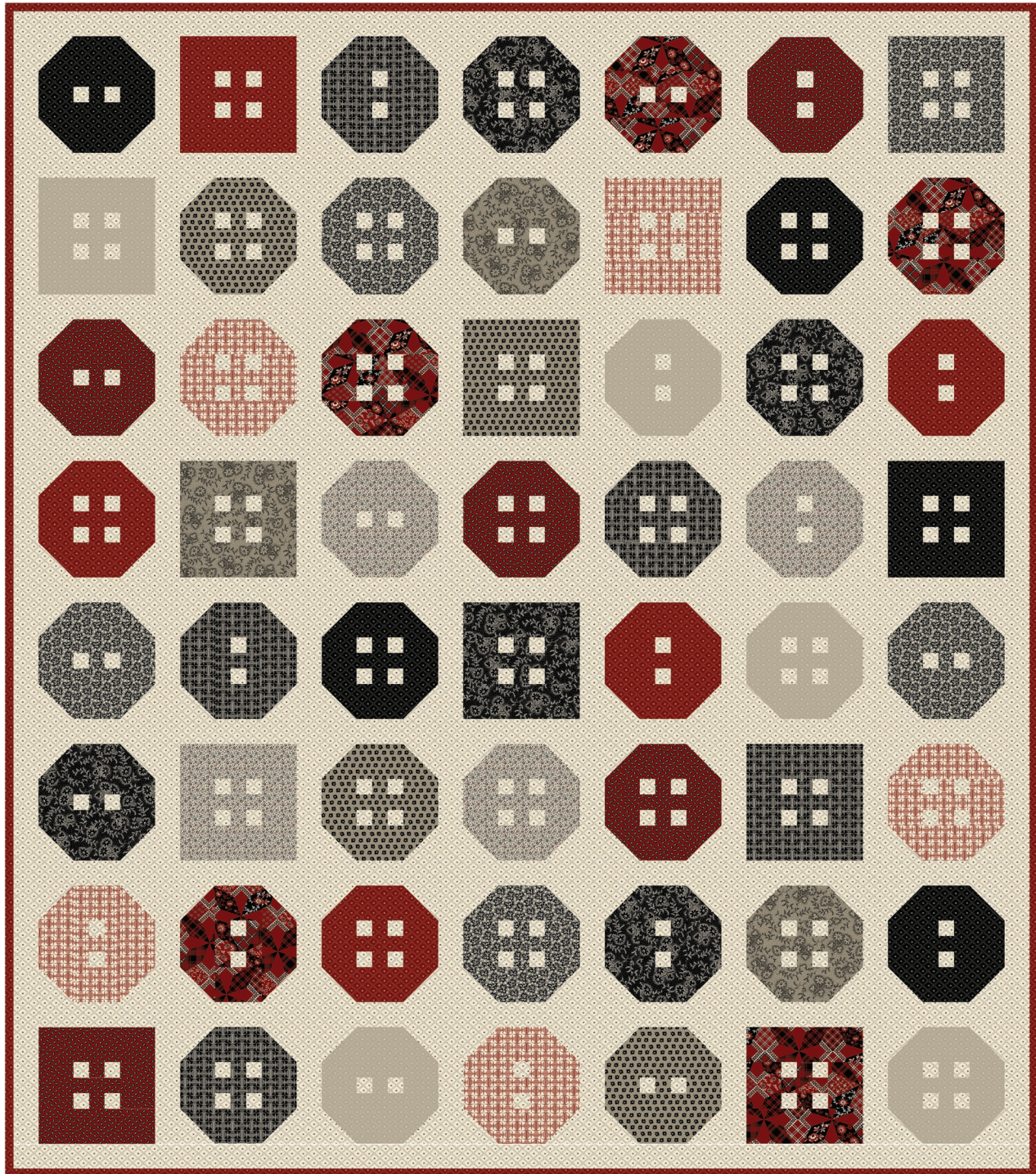


by Stacy West



Quilt size: 61 1/2" x 70" (1.56m x 1.78m)

Skill Level: Intermediate

Button Up Throw

Designed by Allison R. Harris of Cluck Cluck Sew
www.cluckclucksewshop.com

Button Up Throw Ordering Guide

SKU	Yards	Meters	6 Kits	12 Kits
 2855-88	FO	0.23m	1 bolt	1 bolt
 2856-09	FO	0.23m	1 bolt	1 bolt
 2857-08	FO	0.23m	1 bolt	1 bolt
 2858-99	FO	0.23m	1 bolt	1 bolt
 2859-09	2 3/4	2.51m	2 bolts	3 bolts
 2860-88*	FO+1/2 yds	0.69m	1 bolt	1 bolt
 2860-33	FO	0.23m	1 bolt	1 bolt
 2860-99	FO	0.23m	1 bolt	1 bolt
 2862-93	FO	0.23m	1 bolt	1 bolt
 2862-99	FO	0.23m	1 bolt	1 bolt
 2863-93	FO	0.23m	1 bolt	1 bolt
 2865-99	FO	0.23m	1 bolt	1 bolt
 2866-89	FO	0.23m	1 bolt	1 bolt

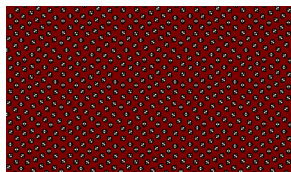
44" Backing Fabric Option

2862-99	4 yds	3.66m	2 bolts	4 bolts
---------	-------	-------	---------	---------

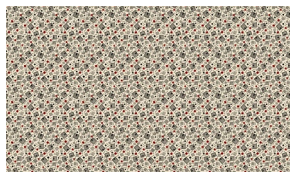
* Indicates binding fabric.

FO = 18" x 22" (0.45m x 0.55m)

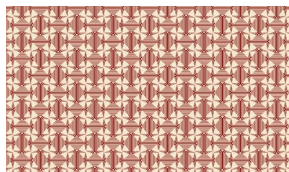
All fabric quantities are based on 15yd bolts unless otherwise indicated.



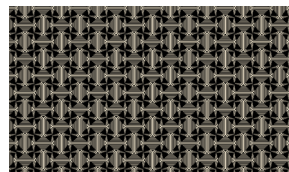
2855-88
Tossed Geometric
Red



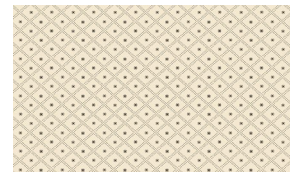
2856-09
Geometric Boxes
Cream/Black



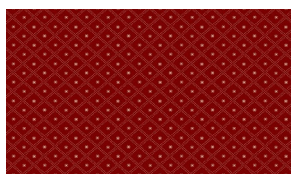
2857-08
Linear Diamonds
Cream/Red



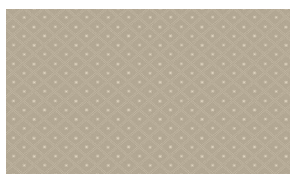
2858-99
Pinwheels
Black



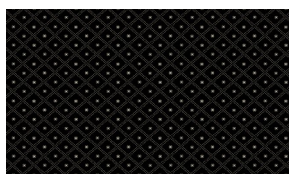
2859-09
Dotted Lattice
Cream/Black



2860-88*
Lattice/Geo
Red



2860-33
Lattice/Geo
Taupey Gray



2860-99
Lattice/Geo
Black



2862-93
Dotted Floral
Taupey Gray



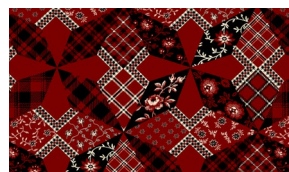
2862-99
Dotted Floral
Black



2863-93
Leaves
Taupey Gray



2865-99
Stylized Vine
Black



2866-89
Cheater Quilt
Red/Black

Henry Glass & Co. Inc.

148 West 37th Street - New York, NY 10018 - Tel: 800-294-9495 - Fax: 212-679-4578 - www.henryglassfabrics.net