

Ashby

by Lisa Schiller



Quilt size: 57" x 73" (1.44 x 1.85m)

Skill Level: Advanced Beginner

Interlace Quilt

Designed by Susan Ziegler of Quiltin' Tia
www.quiltintia.com

Interlace Quilt Ordering Guide

SKU	Yards	Meters	6 Kits	12 Kits
 3724-42	1 yd	0.91m	1 bolt	1 bolt
 3724-88	1 yd	0.91m	1 bolt	1 bolt
 3727-88	1 yd	0.91m	1 bolt	1 bolt
 3728-36	1 yd	0.91m	1 bolt	1 bolt
 3730-44	1 yd	0.91m	1 bolt	1 bolt
 3731-88	1 yd	0.91m	1 bolt	1 bolt

44" Backing Fabric Option

3724-36	4 yds	3.66m	2 bolts	4 bolts
---------	-------	-------	---------	---------

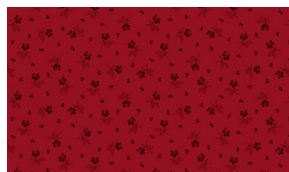
* Indicates binding fabric.

FO = 18" x 22" (0.45m x 0.55m)

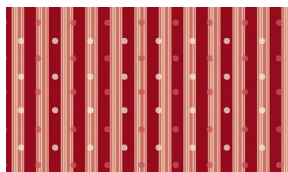
All fabric quantities are based on 15yd bolts unless otherwise indicated.



3724-42
Wildflower Toss
Cream Pink



3724-88
Wildflower Toss
Red



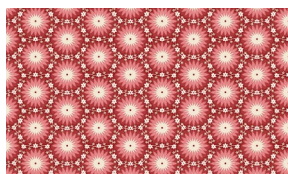
3727-88*
Spotted Stripes
Red



3728-36
Lacey Blooms
Light Khaki



3730-44
Ashby Bouquets
Cream



3731-88
Sunburst Floral
Light Red

Henry Glass & Co. Inc.

148 West 37th Street - New York, NY 10018 - Tel: 800-294-9495 - Fax: 212-679-4578 - www.henryglassfabrics.net