

# Ashby

by Lisa Schiller



Quilt size: 74" x 74" (1.87 x 1.87m)

Skill Level: Advanced Beginner

Dash of Cinnamon Quilt  
Designed by Susan Ziegler Quiltin' Tia  
[www.quiltintia.com](http://www.quiltintia.com)

## Dash of Cinnamon Quilt Ordering Guide

SKU	Yards	Meters	6 Kits	12 Kits
 3724-36	1 yd	0.91m	1 bolt	1 bolt
 3724-42	FO	0.22m	1 bolt	1 bolt
 3724-88	FO	0.22m	1 bolt	1 bolt
 3725-48	FO	0.22m	1 bolt	1 bolt
 3725-88	FO	0.22m	1 bolt	1 bolt
 3726-42	FO	0.22m	1 bolt	1 bolt
 3726-88	FO	0.22m	1 bolt	1 bolt
 3727-32	1/2 yd	0.46m	1 bolt	1 bolt
 3727-88	5/8 yd	0.57m	1 bolt	1 bolt
 3728-36	FO	0.22m	1 bolt	1 bolt
 3728-88	FO	0.22m	1 bolt	1 bolt
 3729-36	3/8 yd	0.34m	1 bolt	1 bolt
 3730-88	FO + 1.375 yd	1.60m	1 bolt	2 bolts
 3731-44	FO	0.22m	1 bolt	1 bolt
 3731-88	FO	0.22m	1 bolt	1 bolt
 3732-44	FO	0.22m	1 bolt	1 bolt

### 44" Backing Fabric Option

3726-32	5 1/2 yd	5.03m	3 bolts	5 bolts
---------	----------	-------	---------	---------

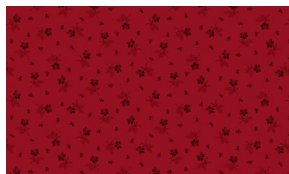
\* Indicates binding fabric.  
FO = 18" x 22" (0.45m x 0.55m)  
All fabric quantities are based on 15yd bolts unless otherwise indicated.



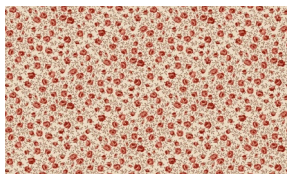
3724-36  
Wildflower Toss  
Medium Khaki



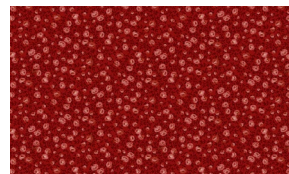
3724-42  
Wildflower Toss  
Cream Pink



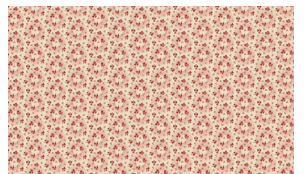
3724-88  
Wildflower Toss  
Red



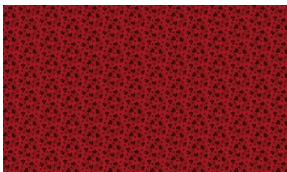
3725-48  
Rosebud Calico  
Cream Red



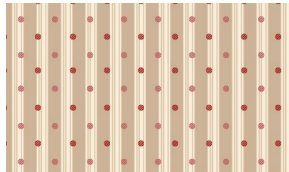
3725-88  
Rosebud Calico  
Red



3726-42  
Sprigs and Wreaths  
Cream Pink



3726-88  
Sprigs and Wreaths  
Red



3727-32  
Spotted Stripes  
Light Khaki



3727-88\*  
Spotted Stripes  
Red



3728-36  
Lacey Blooms  
Light Khaki



3728-88  
Lacey Blooms  
Red



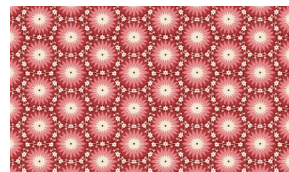
3729-36  
Wandering Vines  
Light Khaki



3730-88  
Ashby Bouquets  
Light Red



3731-44  
Sunburst Floral  
Pink



3731-88  
Sunburst Floral  
Light Red



3732-44  
Delicate Trellis  
Cream

Henry Glass & Co. Inc.

148 West 37th Street - New York, NY 10018 - Tel: 800-294-9495 - Fax: 212-679-4578 - [www.henryglassfabrics.net](http://www.henryglassfabrics.net)