

BIG KITTIES

by Shelly Comiskey



Jungle Nursery Quilt

Designed by Denise Russell of Pieced Brain

Quilt size: 42" x 52"

Skill Level: Beginner



Henry Glass & Co., Inc.
49 West 37th Street ♦ New York, NY 10018 ♦ Tel: 212-686-5194
Fax: 212-532-3525 ♦ Toll Free: 800-294-9495
www.henryglassfabrics.net

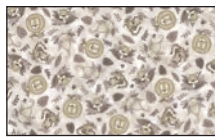
BIG KITTIES - Fabrics in the Collection



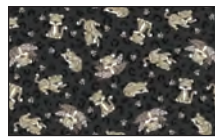
1639-49 Big Kitties Novelty
Stripe - Multi



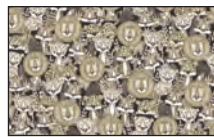
1641P-49 Big Kitty Panel - 24"
Multi



1628-44 Big Kitties
Toss - Beige



1629-99 Cheetah
Toss - Black



1630-49 Packed
Kitties - Multi



1631-44 Lion Toss
Beige



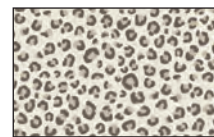
1632-44 Tiger Toss
Taupe



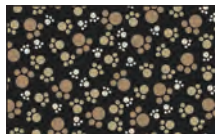
1633-49 Bias Plaid
Black



1634-94 Tiger Skin
Beige/Blk



1635-44 Cheetah
Skin - Beige/Blk



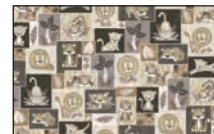
1636-99 Paw Prints
Black



1637-49 Leopard
Skin - Beige



1638-99 Leopard
Toss - Black



1640-49 Big Kitty
Patch - Multi

Selected fabric from the
Folio Basics collection



7755-01W
White

Jungle Nursery Quilt

MATERIALS

Yardages and cutting instructions are based on 42" of usable fabric width.

¼ yard 1630-49 Packed Kitties - Multi
 ¼ yard 1631-44 Lion Toss - Beige
 ¼ yard 1632-44 Tiger Toss - Taupe
 ⅓ yard 1635-44 Cheetah Skin - Beige/Blk
 ⅓ yard 1637-49 Leopard Skin - Beige
 ½ yard 1636-99 Paw Prints - Black
 ⅝ yard 1634-94 Tiger Skin - Beige/Blk
 ⅔ yard 1628-44 Big Kitties Toss - Beige
 1½ yards 7755-01W Folio Basics - White
 2⅞ yards 1629-99 Cheetah Toss - Black for backing
 50" x 60" piece of batting

CUTTING

Note: All strips are cut across the width of the fabric (WOF) from selvage to selvage unless otherwise indicated.

From each, cut:

1630-49 Packed Kitties - Multi

1631-44 Lion Toss - Beige

1632-44 Tiger Toss - Taupe

*(1) 5½" x WOF strip. Sub-cut (3) 5½" squares.

From 1635-44 Cheetah Skin - Beige/Blk, cut:

*(5) 1½" x WOF strips for border 2.

From 1637-49 Leopard Skin - Beige, cut:

*(1) 7½" x WOF strip. Sub-cut (12) 1½" x 7½" and (12) 1½" x 5½" rectangles.

From 1636-99 Paw Prints - Black, cut:

*(1) 1½" x WOF strip. Sub-cut (20) 1½" squares.

*(5) 2½" x WOF strips for binding.

From 1634-94 Tiger Skin - Beige/Blk, cut:

*(1) 9½" x WOF strip. Sub-cut (12) 1½" x 9½" and (12) 1½" x 7½" rectangles.

*(5) 1½" x WOF strips for border 4.

From 1628-44 Big Kitties Toss - Beige, cut:

*(1) 5½" x WOF strip. Sub-cut (3) 5½" squares.

*(5) 3" x WOF strips for border 3.

From 7755-01W Folio Basics - White, cut:

*(1) 7½" x WOF strip. Sub-cut (24) 1½" x 7½" rectangles.

*(2) 9½" x WOF strips. Sub-cut:

- (43) 1½" x 9½" rectangles.

- (12) 1½" x 5½" rectangles.

*(4) 1½" x WOF strips for border 1.

From 1629-99 Cheetah Toss - Black, cut:

*(2) 50" x WOF panels, pieced horizontally.

BLOCK ASSEMBLY

1. Sew (2) 1½" x 5½" 7755-01W Folio Basics - White rectangles to opposite sides of a 5½" 1630-49 Packed Kitties - Multi square. Press the seams away from the center. Sew a 1½" x 7½" White rectangle to the top and bottom of the squares (*Figure 1*). Press as before. Make 3.



Figure 1 – Make 3.

2. Sew (2) 1½" x 7½" 1634-94 Tiger Skin - Beige/Blk rectangles to opposite sides of the Step 1 units. Press the seams away from the center. Sew a 1½" x 9½" Tiger Skin rectangle to the top and one to the bottom of the units to complete (3) 9½" blocks (*Figure 2*). Press as before.



Figure 2 – Make (3) 9½" blocks.

3. Repeat Steps 1 and 2 with the (3) 5½" 1628-44 Big Kitties Toss - Beige squares, (6) ½" x 5½" 7755-01W Folio Basics - White rectangles, (6) 1½" x 7½" White rectangles, (6) 1½" x 7½" 1634-94 Tiger Skin - Beige/Blk rectangles, and (6) ½" x 9½" Tiger Skin rectangles to make (3) 9½" blocks (*Figure 3*).



Figure 3 - Make (3) 9½" blocks.

Jungle Nursery Quilt

4. Sew (2) $1\frac{1}{2}$ " x $5\frac{1}{2}$ " 1637-49 Leopard Skin - Beige rectangles to opposite sides of a $5\frac{1}{2}$ " 1631-44 Lion Toss - Beige square. Press the seams away from the center. Sew a $1\frac{1}{2}$ " x $7\frac{1}{2}$ " Leopard Skin rectangle to the top and one to the bottom of the squares (*Figure 4*). Press as before. Make 3.

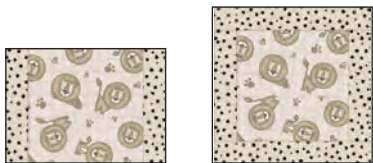


Figure 4 – Make 3.

5. Sew (2) $1\frac{1}{2}$ " x $7\frac{1}{2}$ " Folio Basics - White rectangles to opposite sides of the Step 4 units. Press the seams away from the center. Sew a $1\frac{1}{2}$ " x $9\frac{1}{2}$ " Folio Basics - White rectangle to the top and one to the bottom of the units to complete (3) $9\frac{1}{2}$ " blocks (*Figure 5*). Press as before.

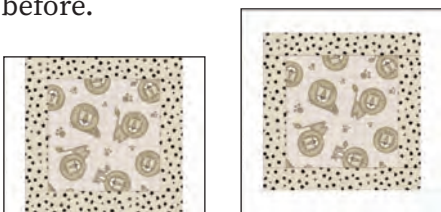


Figure 5 – Make (3) $9\frac{1}{2}$ " blocks.

6. Repeat Steps 4 and 5 with the (3) $5\frac{1}{2}$ " 1632-44 Tiger Toss - Taupe squares, (6) $1\frac{1}{2}$ " x $5\frac{1}{2}$ " 1637-49 Leopard Skin - Beige rectangles, (6) $1\frac{1}{2}$ " x $7\frac{1}{2}$ " Leopard Skin rectangles, (6) $1\frac{1}{2}$ " x $7\frac{1}{2}$ " Folio Basics - White rectangles, and (6) $1\frac{1}{2}$ " x $9\frac{1}{2}$ " Folio Basics - White rectangles to make (3) $9\frac{1}{2}$ " blocks (*Figure 6*).



Figure 6 – Make (3) $9\frac{1}{2}$ " blocks.

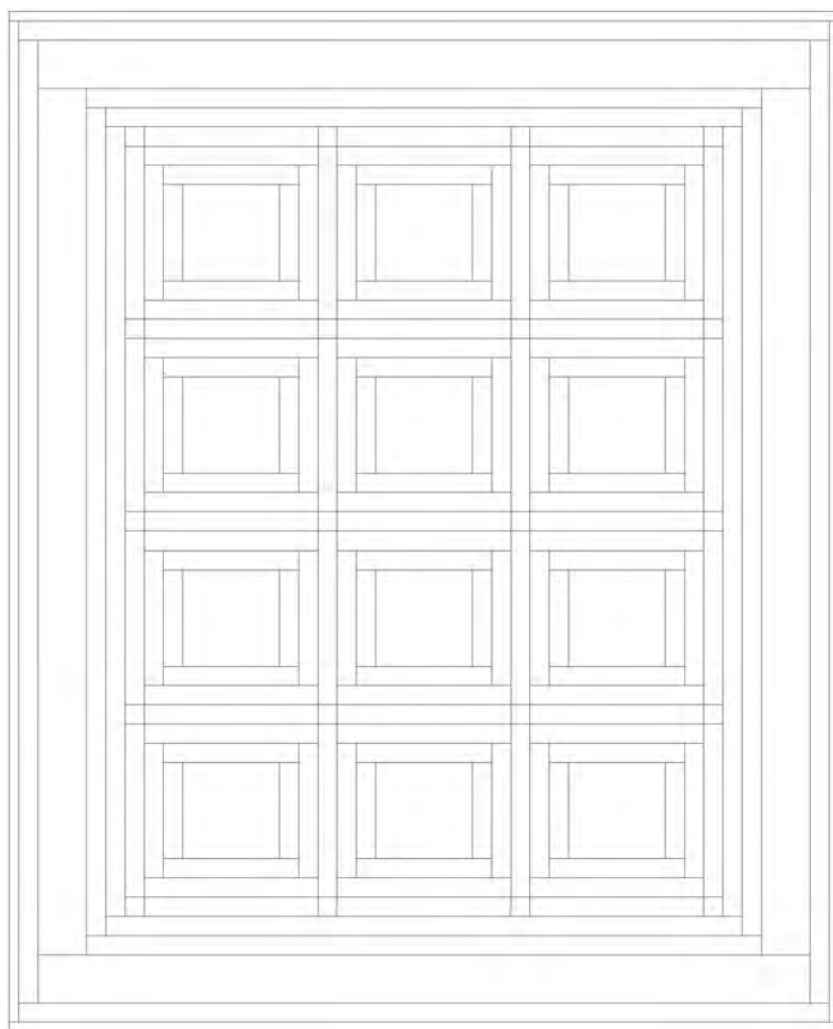
QUILT ASSEMBLY

7. Referring to the quilt photograph for block placement, lay out 3 blocks and (2) $1\frac{1}{2}$ " x $9\frac{1}{2}$ " Folio Basics - White sashing rectangles in 4 rows. Notice how the blocks alternate in the rows and from row to row. Join the blocks and sashing rectangles together in each row. Press the seams toward the sashing.
8. To make the horizontal sashing rows, sew together (4) $1\frac{1}{2}$ " 1636-99 Paw Prints - Black squares and (3) $1\frac{1}{2}$ " x $9\frac{1}{2}$ " Folio Basics - White sashing rectangles. Press the seams toward the sashing. Repeat to make 4 sashing strips.
9. Matching adjacent seams, sew the block and sashing rows together. Press the seams in one direction.
10. For border 1, measure the vertical length of the quilt top through the center and trim (2) $1\frac{1}{2}$ " Folio Basics - White border strips that length. Sew one strip to each side of the quilt top. Measure the width of the quilt top through the center. Trim (2) $1\frac{1}{2}$ " Folio Basics - White that length and sew one to the top and one to the bottom. Press the seams toward the borders.
11. For border 2, sew (5) $1\frac{1}{2}$ " 1635-44 Cheetah Skin - Beige/Blk border strips together end to end using diagonal seams. Measure the vertical length of the quilt top through the center and cut two border strips that length. Sew one strip to each side of the quilt top. Measure the width of the quilt top through the center. Cut two border strips that length and sew one to the top and one to the bottom. Press the seams toward the borders.
12. Repeat Step 11 with the (5) 3" 1628-44 Big Kitties Toss - Beige strips to make and add border 3.
13. Repeat Step 11 with the (5) $1\frac{1}{2}$ " 1634-94 Tiger Skin - Beige/Blk strips to make and add border 4.

Jungle Nursery Quilt

FINISHING

14. Create a quilt sandwich with the batting between the quilt top and the backing. Pin or baste the layers together, mark the quilting design, and quilt by hand or machine. When the quilting is complete, remove pins or basting, and trim the batting and backing even with the raw edges of the quilt top.
15. Join the (5) 2½" 1636-99 Paw Prints - Black binding strips together end to end using a diagonal seam to make one long strip. Trim the seams to ¼" and press them open. With wrong sides together, fold the strip in half lengthwise and press. Sew the binding to the edges of the quilt top, mitering corners and overlapping ends. Fold the binding to the back of the quilt and hand-stitch in place.



Quilt Diagram

©2024 Henry Glass & Co. Inc.

Every effort has been made to ensure that all projects are error free. All the information is presented in good faith; however, no warranty can be given nor results guaranteed as we have no control over the execution of instructions. Therefore, we assume no responsibility for the use of this information or damages that may occur as a result. When errors are brought to our attention, we make every effort to correct and post a revision as soon as possible. Please make sure to check www.henryglassfabrics.net for pattern updates prior to starting the project. We also recommend that you test the project prior to cutting for kits. Finally, all free projects are intended to remain free to you and are not for resale.