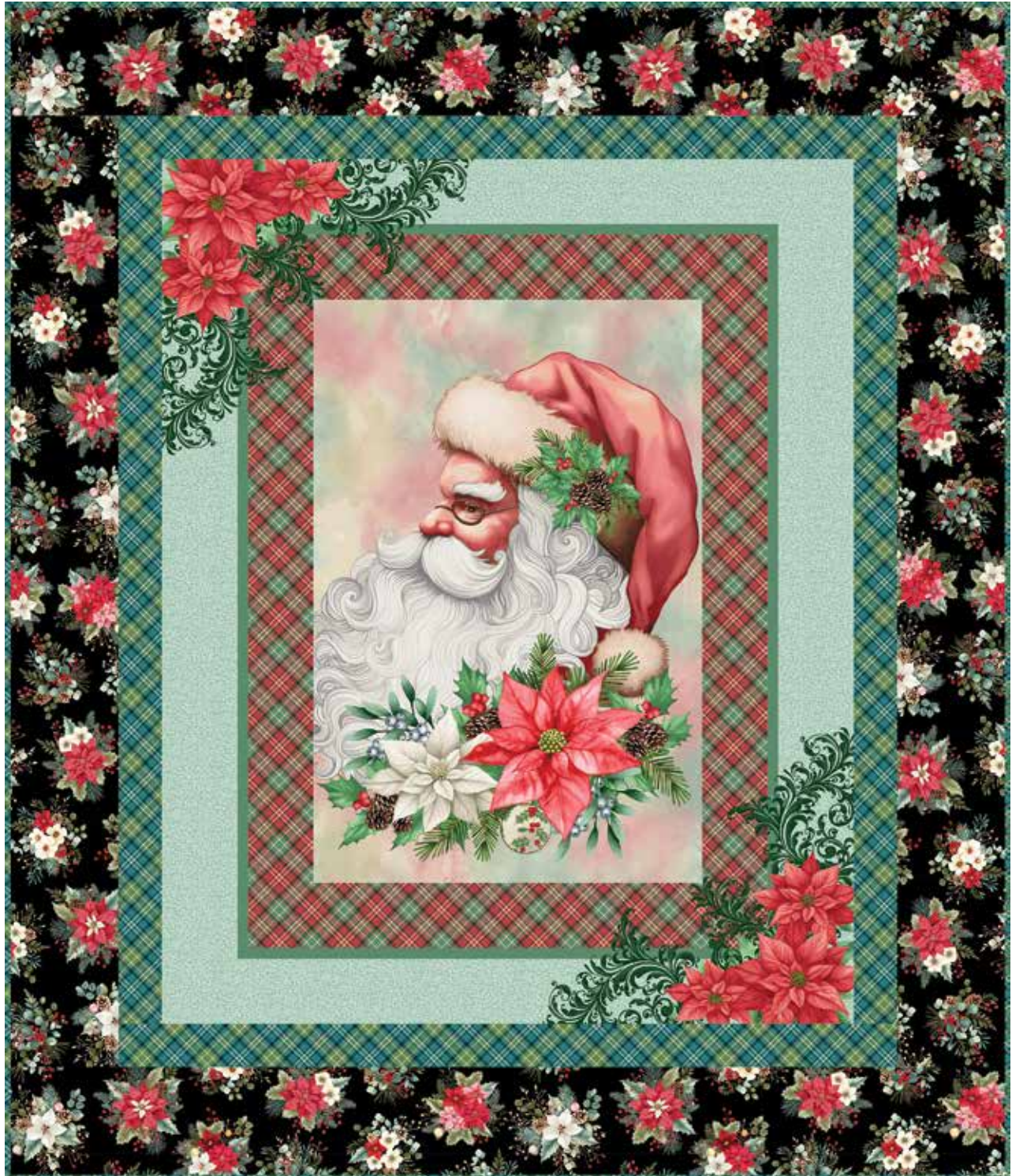


Father Christmas Quilt

 Henry Glass & Co., Inc.



Finished Size of Project: **46" x 54" (1.17m x 1.37m)**

Fabric Collection Name and Designer: **Sweet Christmas Memories by Color Principle**

Technique: **Pieced**

Project Designed by: **Matthew Pridemore of The Whimsical Workshop**

Skill Level: **Beginner**

Fabric Requirements

DESIGN	COLOR	ITEM ID	YARDAGE
(A) Bias Plaid	Teal	3621-76	7/8 yard (0.80m)*
(B) (B) Holiday Flower Toss	Black	3625-99	1 1/8 yards (1.03m)
(C) (C) Santa Panel	Ice Blue	3628PH-17	1 panel

* includes binding



(A)



(B)



(C)

Backing (Purchased Separately)

44" (1.12m) wide

Santa Toss

Black

3618-99

3 yards (2.74m)



Backing
44"

Additional Materials:

- Batting 54" x 62" (1.37m x 1.58m)
- Thread and sewing supplies

All possible care has been taken to ensure the accuracy of this pattern. We are not responsible for printing errors or the manner in which individual work varies.

Please read the instructions carefully before starting this project. If kitting it is recommended a sample is made to confirm accuracy.

All free projects are intended to remain free and are not for resale.

Cutting Instructions

Notes:

- Please make sure to check henryglassfabrics.net for pattern updates prior to starting the project.
- All strips are cut across the width of fabric (WOF) from selvage to selvage edge unless otherwise noted.

Fabric A, cut:

(2) 3½" x 40½"

(2) 3½" x 36½"

(6) 2½" x WOF for the binding

Fabric B, cut:

(3) 5½" x WOF ; sew together end to end with diagonal seams and cut (2) 5½" x 46½"

(3) 5½" x WOF; sew together end to end with diagonal seams and cut (2) 5½" x 44½"

Fabric C, fussy cut:

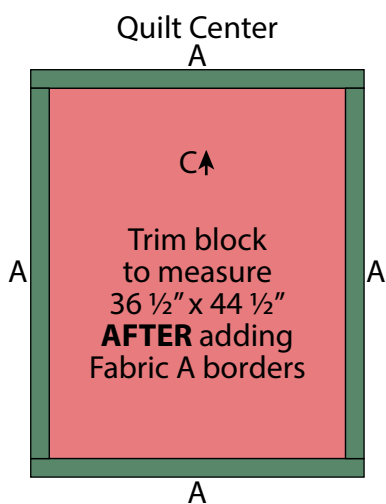
(1) 32½" x 40½" rectangle centered on panel

Sewing

- Sew using a $\frac{1}{4}$ " seam allowance with right sides together (RST) unless otherwise indicated. Press seams towards the darker fabric, unless otherwise indicated.
- The arrows in the figures represent the fabric print direction. Pay attention to the fabric and unit orientations when assembling the various components.

1. Sew (1) $3\frac{1}{2}$ " x $40\frac{1}{2}$ " **Fabric A** strip to each side of the $32\frac{1}{2}$ " x $40\frac{1}{2}$ " **Fabric C** rectangle. Sew (1) $3\frac{1}{2}$ " x $36\frac{1}{2}$ " **Fabric A** strip to the top and bottom of the **Fabric C** rectangle to make the Quilt Center (**Fig. 1**). **Trim the Quilt Center to measure $36\frac{1}{2}$ " x $44\frac{1}{2}$ ".**

Fig. 1



Quilt Top Assembly

Follow the Quilt Layout (Page 5) while assembling the quilt top.

2. Sew (1) $5\frac{1}{2}$ " x $44\frac{1}{2}$ " **Fabric B** strip to each side of the Quilt Center. Sew (1) $5\frac{1}{2}$ " x $46\frac{1}{2}$ " **Fabric B** strip to the top and bottom of the

Quilt Center to complete the quilt top which should measure $46\frac{1}{2}$ " x $54\frac{1}{2}$ ".

Layering, Quilting and Finishing

3. Layer the backing (wrong side up), batting, and quilt top (right side up). Baste the layers together and quilt as desired. Trim excess batting and backing even with the top of the quilt.

Binding

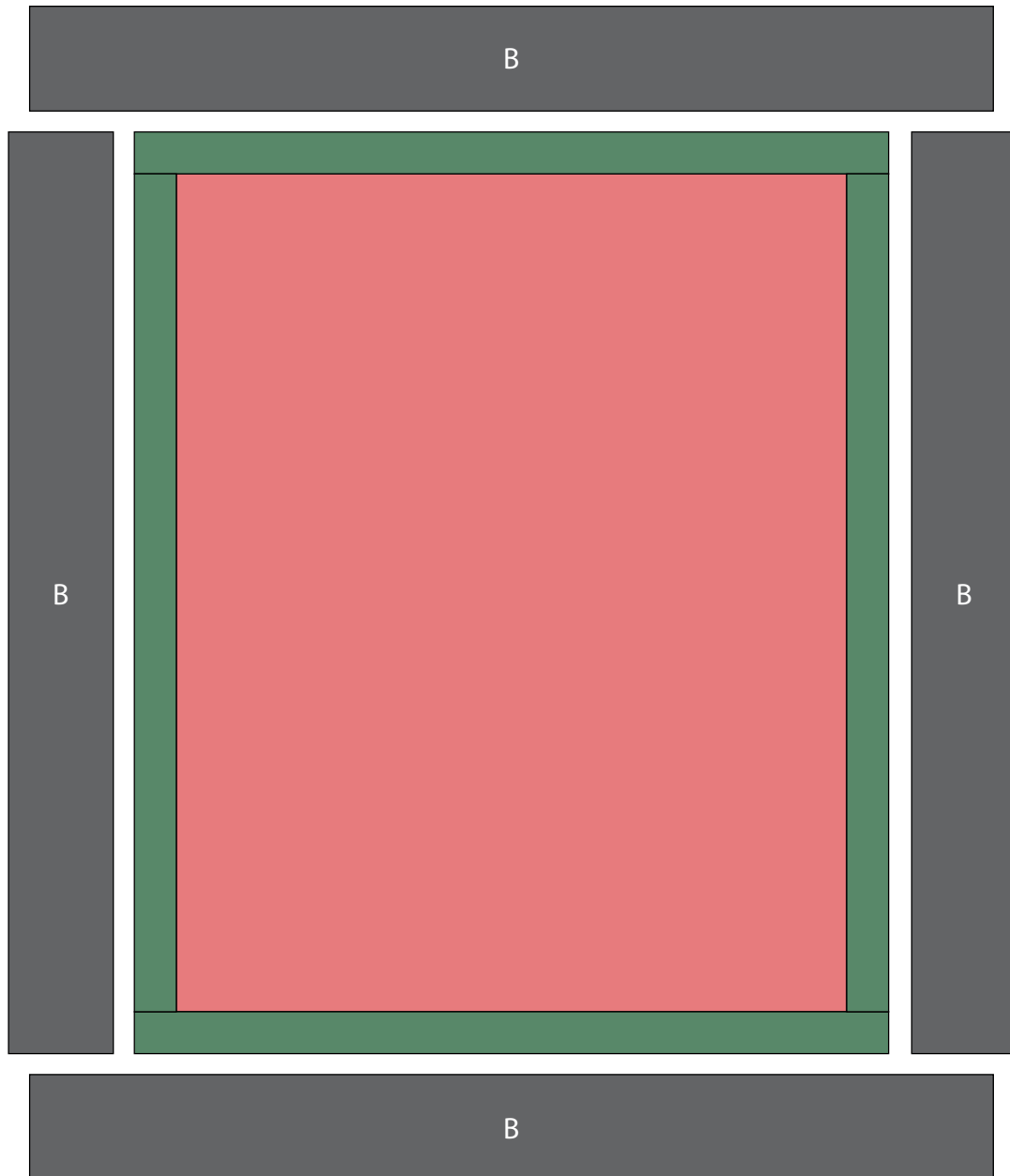
4. Sew together (6) $2\frac{1}{2}$ " x WOF **Fabric A** binding strips end to end with diagonal seams. Press the seams open. Press the binding strip in half wrong sides together.
5. Leaving an 8" tail of binding and beginning along an edge of the quilt top, match raw edges of the binding to the raw edges of the quilt top. Sew the binding to the outside edge around all four sides and miter corners. Stop sewing approximately 12" from where you started and backstitch.
6. Lay both loose ends of binding flat along the quilt edge. Where these two loose ends meet, fold them back onto themselves and press to form a crease. Using this crease as your stitching line, sew the two open ends of the binding together, right sides matching. Trim seam to $\frac{1}{4}$ " and press seam open. Finish sewing the binding to the quilt top.
7. Turn the binding over the raw edge to the back of the quilt and hand or machine stitch in place.

All possible care has been taken to ensure the accuracy of this pattern. We are not responsible for printing errors or the manner in which individual work varies.

Please read the instructions carefully before starting this project. If kitting it is recommended a sample is made to confirm accuracy.

All free projects are intended to remain free and are not for resale.

Quilt Layout



All possible care has been taken to ensure the accuracy of this pattern. We are not responsible for printing errors or the manner in which individual work varies.

Please read the instructions carefully before starting this project. If kitting it is recommended a sample is made to confirm accuracy.

All free projects are intended to remain free and are not for resale.