



Finished Block Size: **6" square (15.24cm)**  
Finished Quilt Size: **70" x 90" (1.78m x 2.29m)**  
Fabric Collection: **Mr. Moon by Hannah West**  
Technique: **Pieced**  
Designed by: **Emma Lea Creative**  
Skill Level: **Advanced Beginner**  
Tech Edited by: **Carli Marsico**

# My Friend, Mr. Moon

## Fabric Requirements

DESIGN	COLOR	ITEM ID	YARDAGE
(A) Mr. Moon Panel	Orange/Black	2619P-39	1 yard (0.91m)
(B) Flying Witches	Orange	2606-33	½ yard (0.46m)
(C) Geometric Triangles	Black	2615-99	¾ yard (0.69m)
(D) Delicate Stripe	Cheddar	2611-44	½ yard (0.46m)
(E) Mini Crescent Moons	Black	2613-99	⅔ yard (0.61m)
(F) Leaves and Vines	Purple	2607-55	1⅛ yards (1.03m)
(G) Leaves and Vines	Taupey Gray	2607-93	½ yard (0.46m)
(H) Geometric	Orange	2608-33*	1 yard (0.91m)
(I) Squares & Stars Geo	Purple	2609-55	½ yard (0.46m)
(J) Zig Zag Geo	Black/Orange	2610-93	½ yard (0.46m)
(K) Delicate Stripe	Black	2611-94	½ yard (0.46m)
(L) Abstract Leaves	Black	2612-93	½ yard (0.46m)
(M) Timeless Linen Basics	Black	1027-99	⅝ yard (0.57m)
(N) Timeless Linen Basics	Orange	1027-32	½ yard (0.46m)

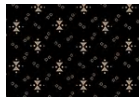
\* includes binding



(A)



(B)



(C)



(D)



(E)



(F)



(G)



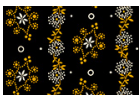
(H)



(I)



(J)



(K)



(L)



(M)



(N)

## Backing (Purchased Separately)

44" (1.12m) wide

Flying Witches

Orange

2606-33

3 yards (2.74m)



Backing  
44"

## Additional Materials:

- 100% cotton thread
- Batting: 78" x 98" (1.98m x 2.49m)

All possible care has been taken to ensure the accuracy of this pattern. We are not responsible for printing errors or the manner in which individual work varies.

Please read the instructions carefully before starting this project. If kitting it is recommended a sample is made to confirm accuracy.

All free projects are intended to remain free and are not for resale.

## CUTTING

### Notes:

- Please make sure to check [www.henryglassfabrics.net](http://www.henryglassfabrics.net) for pattern updates prior to starting the project.
- All strips are cut across the width of fabric (WOF) from selvedge to selvedge edge unless otherwise noted.

### **Fabric A, fussy cut:**

(1) 36" wide x 36½" tall panel

### **Fabric B, cut:**

(3) 3" x WOF; subcut

(36) 3" squares

(2) 2½" squares

(1) 2½" x WOF; subcut

(16) 2½" squares

### **Fabric C, cut:**

(3) 3" x WOF; subcut

(36) 3" squares

(5) 2½" x WOF; subcut

(72) 2½" squares

### **Fabric D, cut:**

(3) 3" x WOF; subcut

(34) 3" squares

(1) 2½" square

(1) 2½" x WOF; subcut

(16) 2½" squares

### **Fabric E, cut:**

(3) 3" x WOF; subcut

(34) 3" squares

(4) 2½" squares

(4) 2½" x WOF; subcut

(64) 2½" squares

### **Fabric F, cut:**

(1) 6½" x WOF; subcut

(6) 6½" squares

(4) 3½" x WOF; sew short ends to make one long strip for borders

(5) 2½" x WOF; sew short ends to make one long strip for borders

### **Fabric G, cut:**

(2) 6½" x WOF; subcut

(10) 6½" squares

### **Fabric H, cut:**

(1) 6½" x WOF; subcut

(6) 6½" squares

(9) 2½" x WOF for binding

*continued on page 4...*

## CUTTING *(continued...)*

### Fabric I, cut:

(2) 6½" x WOF; subcut  
(11) 6½" squares

### Fabric J, cut:

(1) 6½" x WOF; subcut  
(6) 6½" squares

### Fabric K, cut:

(2) 6½" x WOF; subcut  
(11) 6½" squares

### Fabric L, cut:

(2) 6½" x WOF; subcut  
(12) 6½" squares

### Fabric M, cut:

(2) 3¾" x WOF; subcut  
(2) 3¾" x 36½"  
(3) 3½" x WOF; sew short ends to make one long strip then subcut  
(2) 3½" x 42½"

### Fabric N, cut:

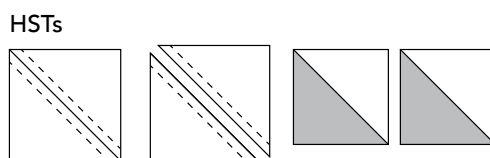
(2) 6½" x WOF; subcut  
(8) 6½" squares

## BLOCK ASSEMBLY

All seam allowances are ¼" (0.64cm). Sew pieces with right sides together. Press seam allowances to the darker fabric unless otherwise indicated.

1. Draw a diagonal line on the back of all 3" **Fabric B** and **Fabric D** squares. Pair (1) 3" **Fabric B** square with (1) 3" **Fabric C** square and sew ¼" away from both sides of the marked line. Cut on the marked line. Press seam towards **Fabric C** and trim to 2½" square (**Fig. 1**). Repeat to make (72) B/C HSTs total.
2. Pair together (1) 3" **Fabric D** square with (1) 3" **Fabric E** square and sew ¼" away from both sides of the marked line. Cut on the marked line. Press seam towards **Fabric E** and trim to 2½" square (**Fig. 1**). Repeat to make (68) D/E HSTs total.

**Fig. 1**



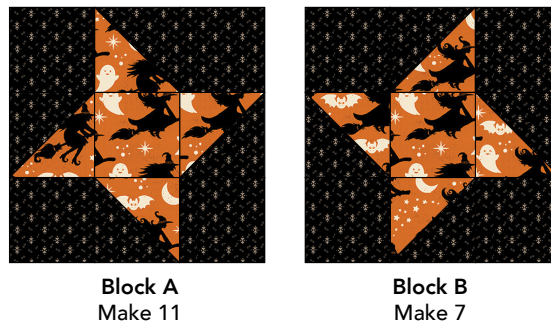
*All possible care has been taken to ensure the accuracy of this pattern. We are not responsible for printing errors or the manner in which individual work varies.*

*Please read the instructions carefully before starting this project. If kitting it is recommended a sample is made to confirm accuracy.*

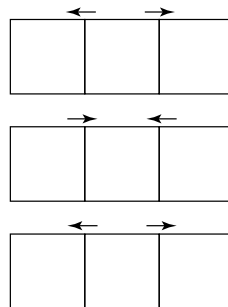
*All free projects are intended to remain free and are not for resale.*

3. Sew together (4) 2½" **Fabric C** squares, (4) **Fabric B/C** HSTs, and (1) 2½" **Fabric B** square into (3) rows of (3) pieces each (**Fig. 2**). Press seams in each row in alternating directions (**Fig. 3**). Repeat, following the diagram for placement and orientation of HSTs to make (11) 6½" Block A Stars and (7) 6½" Block B Stars total.
4. Sew together (4) 2½" **Fabric E** squares, (4) **Fabric D/E** HSTs, and (1) 2½" **Fabric D** square in (3) rows of (3) pieces each (**Fig. 4**). Press seams in each row in alternating directions (**Fig. 3**). Repeat, following the diagram for placement and orientation of HSTs to make (5) 6½" Block C Stars and (12) 6½" Block D Stars total.

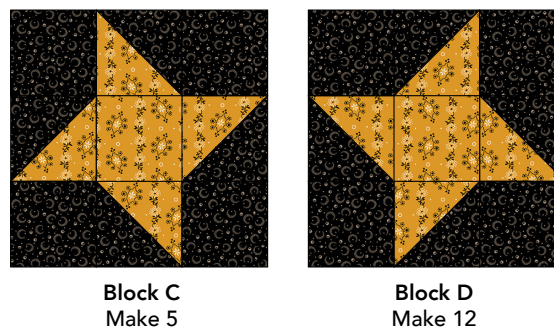
**Fig. 2**



**Fig. 3**



**Fig. 4**



*All possible care has been taken to ensure the accuracy of this pattern. We are not responsible for printing errors or the manner in which individual work varies.*

*Please read the instructions carefully before starting this project. If kitting it is recommended a sample is made to confirm accuracy.*

*All free projects are intended to remain free and are not for resale.*

## QUILT TOP ASSEMBLY

Follow the Quilt Layout Diagram on page 7 while assembling the quilt top.

5. Sew (2)  $3\frac{3}{4}$ " x  $36\frac{1}{2}$ " **Fabric M** strips to the sides of the **Fabric A** Panel. Sew (2)  $3\frac{1}{2}$ " x  $42\frac{1}{2}$ " **Fabric M** strips to the top and bottom of the Panel to make a  $42\frac{1}{2}$ " square Quilt Center.
6. Using blocks and  $6\frac{1}{2}$ " squares indicated in the Quilt Layout diagram, sew together (2) quilt side panels composed of (7) Rows with (2) Blocks each. Sew each side panel to the sides of the Quilt Center. Sew together the top panel composed of (3) Rows of (11) Blocks. Sew to the Quilt Center. Sew together the bottom panel composed of (4) Rows of (11) Blocks. Sew to the bottom of the Quilt Center.
7. Measure your Quilt Top from top to bottom in three places to find the average Quilt Top length. Cut (2)  $2\frac{1}{2}$ " **Fabric F** borders to the Quilt Top length (approx.  $84\frac{1}{2}$ "). Sew side borders to Quilt Top. Measure your Quilt Top from side to side in three places to find the average Quilt Top width. Cut (2)  $3\frac{1}{2}$ " **Fabric F** borders to the Quilt Top width (approx.  $70\frac{1}{2}$ "). Sew to the top and bottom of the Quilt Top.

## FINISHING

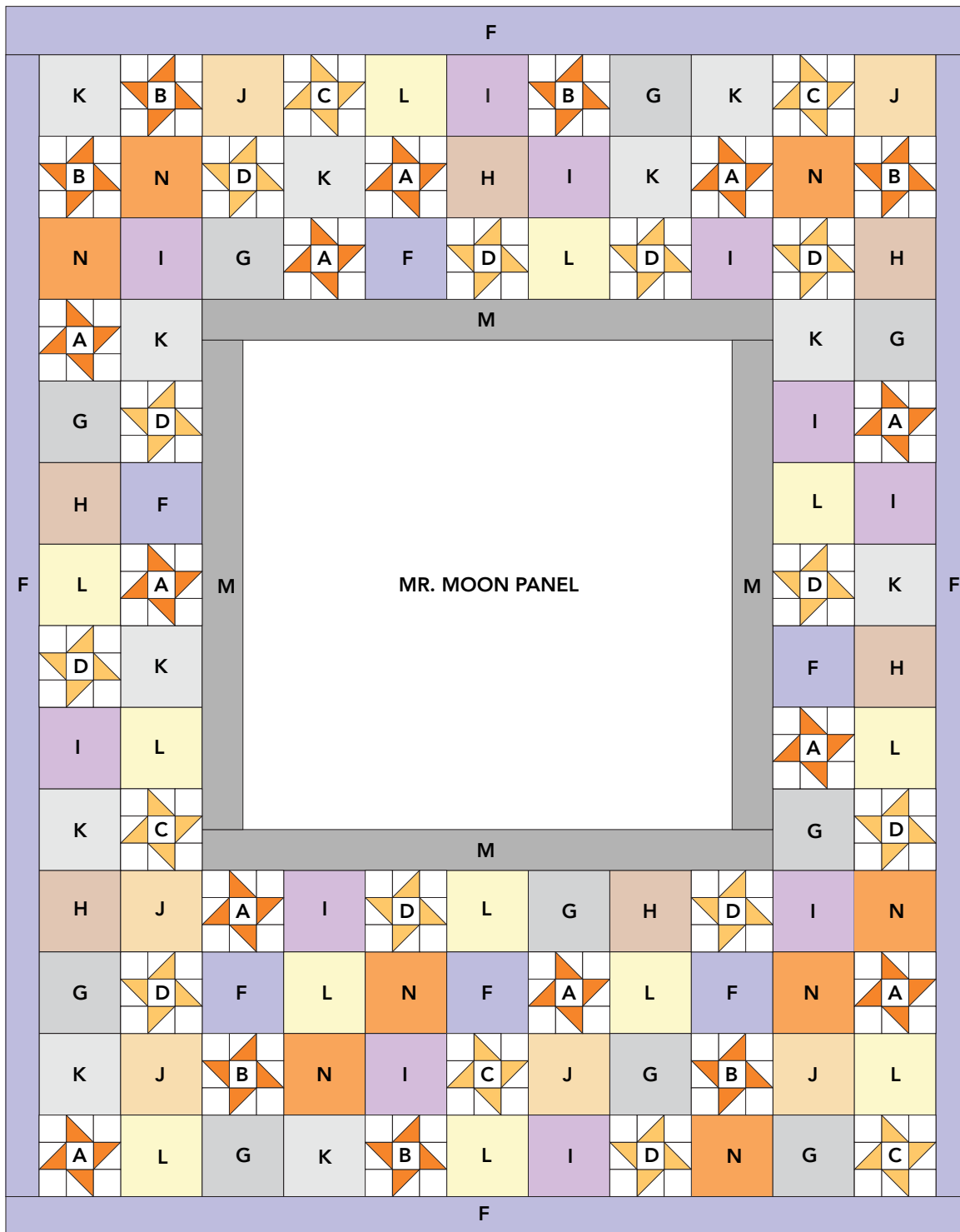
1. Sew together the (9)  $2\frac{1}{2}$ " **Fabric H** binding strips end to end using diagonal seams. Press the seams open. Press the binding strip in half with the wrong sides together.
2. Layer the backing (wrong side up), batting, and quilt top (right side up). Baste the layers together and quilt as desired. Trim excess batting and backing even with the top of the quilt.
3. Leaving an 8" tail of binding and beginning along an edge of the quilt top, matching the raw edges of the binding to the raw edges of the quilt. Sew the binding to the outside edge around all four sides and miter corners. Stop sewing approximately 12" from where you started and backstitch.
4. Lay both loose ends of the binding flat along the quilt edge. Where these two loose ends meet, fold them back onto themselves and press to form a crease. Using this crease as your stitching line, sew the two open ends of the binding together, with the right sides matching. Trim the seam to  $\frac{1}{4}$ " and press it open. Finish sewing the binding to the quilt.
5. Turn the binding over the raw edge to the back of the quilt and hand or machine stitch in place.

*All possible care has been taken to ensure the accuracy of this pattern. We are not responsible for printing errors or the manner in which individual work varies.*

*Please read the instructions carefully before starting this project. If kitting it is recommended a sample is made to confirm accuracy.*

*All free projects are intended to remain free and are not for resale.*

## Quilt Layout



*All possible care has been taken to ensure the accuracy of this pattern. We are not responsible for printing errors or the manner in which individual work varies. Please read the instructions carefully before starting this project. If kitting it is recommended a sample is made to confirm accuracy.*

*All free projects are intended to remain free and are not for resale.*