

Spooky Good Times Table Set HENRY GLASS



Finished Size of Runner: **66" x 30" (1.68m x 0.76m)**

Finished Size of Place Mats: **21" x 16" (0.53m x 0.41m)**

Fabric Collection Name and Designer: **Moonlight Mischief by Shelly Comiskey**

Technique: **Pieced**

Project Designed by: **Matthew Pridemore of The Whimsical Workshop**

Skill Level: **Confident Beginner**

Spooky Good Times Table Set HENRY GLASS

Runner Fabric Requirements

| DESIGN | COLOR | ITEM ID | YARDAGE |
|-------------------------------------|-------------|----------|----------------------------|
| (A) Candy Toss Glow | Dark Purple | 2553G-55 | $\frac{3}{8}$ yard (0.34m) |
| (B) Large Pumpkin Glow | Purple | 2554G-55 | $\frac{3}{8}$ yard (0.34m) |
| (C) Spider and Web Glow | Orange | 2557G-33 | $\frac{1}{4}$ yard (0.23m) |
| (D) Spider and Web Glow | Green | 2557G-66 | $\frac{3}{8}$ yard (0.34m) |
| (E) Witch & Cat on Moon Glow | Orange | 2560G-33 | $\frac{3}{8}$ yard (0.34m) |
| (F) Monster Patch Glow | Multi | 2562G-53 | $\frac{7}{8}$ yard (0.80m) |
| (G) Modern Melody Basics | Black | 1063-99* | 1 yard (0.91m) |

* includes binding



(A)



(B)



(C)



(D)



(E)



(F)



(G)

Backing (Purchased Separately)

44" (1.12m) wide

Bias Plaid Glow

Multi

2558G-59

$2\frac{1}{8}$ yards (1.94m)



Backing
44"

Additional Materials:

- Batting 74" x 38" (1.88m x 0.97m)
- Thread and sewing supplies

All possible care has been taken to ensure the accuracy of this pattern. We are not responsible for printing errors or the manner in which individual work varies.

Please read the instructions carefully before starting this project. If kitting it is recommended a sample is made to confirm accuracy.

All free projects are intended to remain free and are not for resale.

Runner Cutting Instructions

Notes:

- Please make sure to check henryglassfabrics.net for pattern updates prior to starting the project.
- All strips are cut across the width of fabric (WOF) from selvedge to selvedge edge unless otherwise noted.

Fabric A, cut:

- (2) 4½" x WOF; subcut
- (13) 4½" squares

Fabric B, cut:

- (2) 4½" x WOF; subcut
- (13) 4½" squares

Fabric C, cut:

- (1) 1½" x WOF; subcut
- (2) 1½" x 18½"
- (3) 1½" x WOF; sew together end to end with diagonal seams and cut (2) 1½" x 56½"

Fabric D, cut:

- (2) 4½" x WOF; subcut
- (13) 4½" squares

Fabric E, cut:

- (2) 4½" x WOF; subcut
- (13) 4½" squares

Fabric F, cut:

- (2) 4½" x 22½" WOF
- (4) 4½" x WOF; sew together end to end with diagonal seams and cut (2) 4½" x 66½"

Fabric G, cut:

- (1) 1½" x WOF; subcut
- (2) 1½" x 16½"
- (1) 1½" x WOF; subcut
- (2) 1½" x 20½"
- (3) 1½" x WOF; sew together end to end with diagonal seams and cut (2) 1½" x 54½"
- (3) 1½" x WOF; sew together end to end with diagonal seams and cut (2) 1½" x 58½"
- (6) 2½" x WOF for the binding

Runner Sewing

- Sew using a $\frac{1}{4}$ " seam allowance with right sides together (RST) unless otherwise indicated. Press seams towards the darker fabric, unless otherwise indicated.
 - The arrows in the figures represent the fabric print direction. Pay attention to the fabric and unit orientations when assembling the various components.
1. Refer to **Figure 1** for fabric identification, placement and orientation and sew together (52) assorted $4\frac{1}{2}$ " squares into a 13 x 4 grid to make the Runner Center.

Runner Top Assembly

Follow Figure 2 (Page 5) while assembling the quilt top.

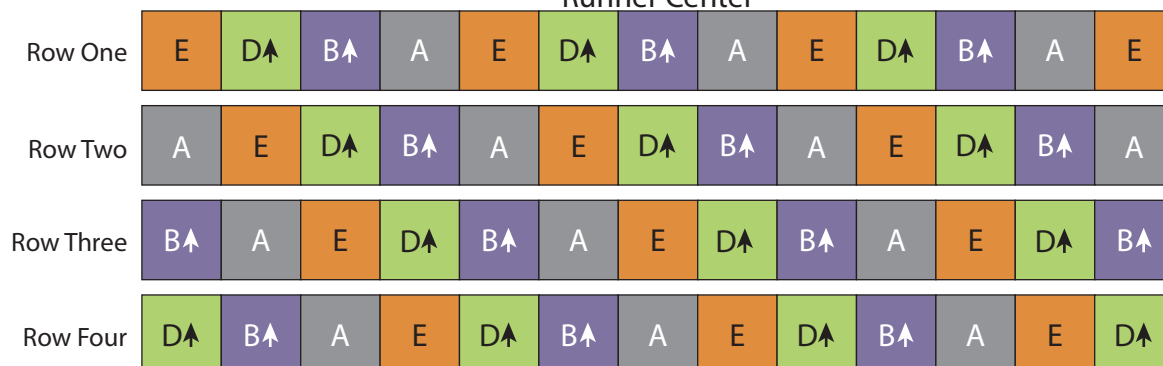
2. Sew (1) $1\frac{1}{2}$ " x $16\frac{1}{2}$ " **Fabric G** strip to each side of the Runner Center. Sew (1) $1\frac{1}{2}$ " x $54\frac{1}{2}$ " **Fabric G** strip to the top and bottom of the Runner Center.
3. Sew (1) $1\frac{1}{2}$ " x $18\frac{1}{2}$ " **Fabric C** strip to each side of the Runner Center. Sew (1) $1\frac{1}{2}$ " x $56\frac{1}{2}$ " **Fabric C** strip to the top and bottom of the Runner Center.
4. Sew (1) $1\frac{1}{2}$ " x $20\frac{1}{2}$ " **Fabric G** strip to each side of the Runner Center. Sew (1) $1\frac{1}{2}$ " x $58\frac{1}{2}$ " **Fabric G** strip to the top and bottom of the Runner Center.
5. Sew (1) $4\frac{1}{2}$ " x $22\frac{1}{2}$ " **Fabric F** strip to each side of the Runner Center. Sew (1) $4\frac{1}{2}$ " x $66\frac{1}{2}$ " **Fabric F** strip to the top and bottom of the Runner Center to make the Runner Top.

Runner Layering, Quilting and Finishing

6. Layer the backing (wrong side up), batting, and quilt top (right side up). Baste the layers together and quilt as desired. Trim excess batting and backing even with the top of the quilt.

Fig. 1

Runner Center



All possible care has been taken to ensure the accuracy of this pattern. We are not responsible for printing errors or the manner in which individual work varies.

Please read the instructions carefully before starting this project. If kitting it is recommended a sample is made to confirm accuracy.

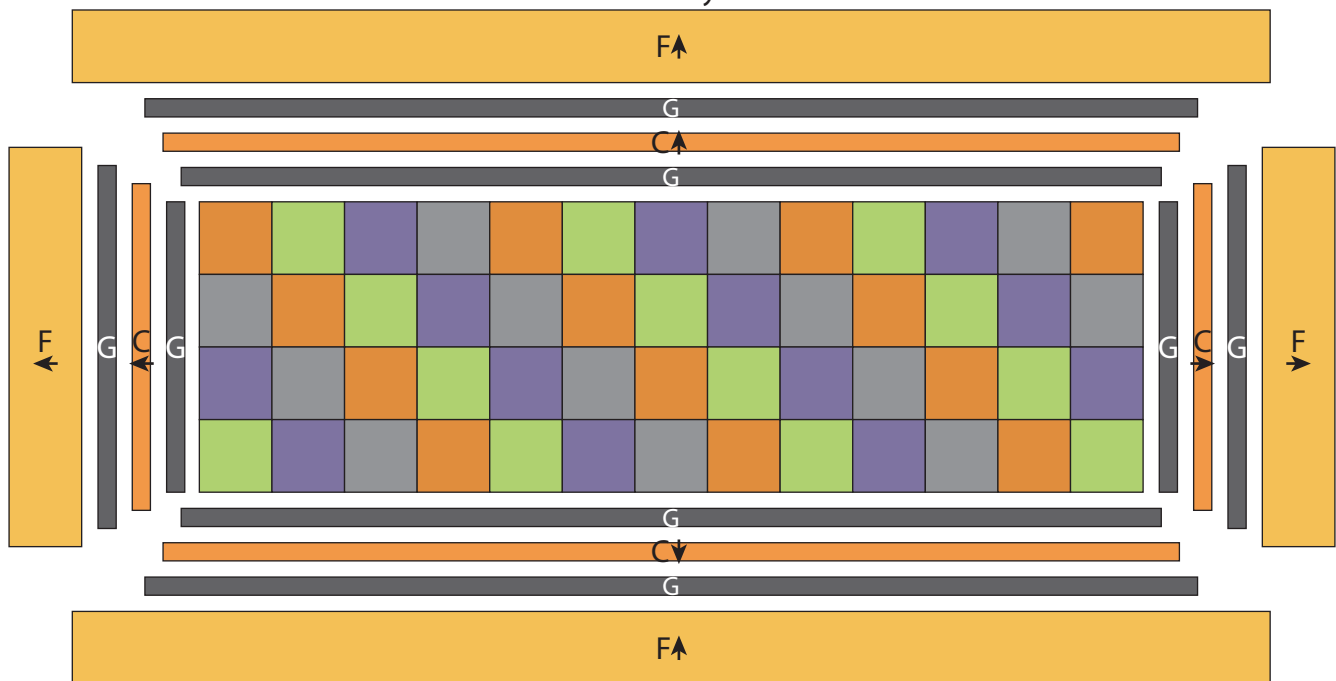
All free projects are intended to remain free and are not for resale.

Runner Binding

7. Sew together (6) 2½" x WOF **Fabric G** binding strips end to end with diagonal seams. Press the seams open. Press the binding strip in half wrong sides together.
8. Leaving an 8" tail of binding and beginning along an edge of the runner top, match raw edges of the binding to the raw edges of the runner top. Sew the binding to the outside edge around all four sides and miter corners. Stop sewing approximately 12" from where you started and backstitch.
9. Lay both loose ends of binding flat along the runner edge. Where these two loose ends meet, fold them back onto themselves and press to form a crease. Using this crease as your stitching line, sew the two open ends of the binding together, right sides matching. Trim seam to ¼" and press seam open. Finish sewing the binding to the runner top.
10. Turn the binding over the raw edge to the back of the runner and hand or machine stitch in place.

Fig. 2

Runner Layout



All possible care has been taken to ensure the accuracy of this pattern. We are not responsible for printing errors or the manner in which individual work varies.

Please read the instructions carefully before starting this project. If kitting it is recommended a sample is made to confirm accuracy.

All free projects are intended to remain free and are not for resale.

Spooky Good Times Table Set HENRY GLASS

Place Mat Fabric Requirements

| DESIGN | COLOR | ITEM ID | YARDAGE |
|--------------------------|--------------|-----------|------------------|
| (A) Tossed Motifs Glow | Dark Purple | 2552G-55 | ½ yard (0.46m) |
| (B) Candy Toss Glow | Dark Purple | 2553G-55 | ¾ yard (0.34m) |
| (C) Grim Reaper Glow | Light Purple | 2561G-55 | ¾ yard (0.34m) |
| (D) 6 Blocks Glow | Multi | 2563BG-59 | ⅔ yard (0.61m) |
| (E) Modern Melody Basics | Orange | 1063-34 | ½ yard (0.46m) |
| (F) Modern Melody Basics | Light Green | 1063-64 | ½ yard (0.46m) |
| (G) Modern Melody Basics | Black | 1063-99* | 1¼ yards (1.14m) |

* includes binding



(A)



(B)



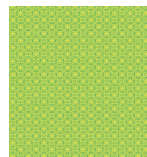
(C)



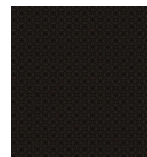
(D)



(E)



(F)



(G)

Backing (Purchased Separately)

44" (1.12m) wide

| | | | |
|------------------------------------|--------|----------|------------------|
| Spider and Web Glow (3 place mats) | Green | 2557G-66 | 1½ yards (1.37m) |
| Spider and Web Glow (3 place mats) | Orange | 2557G-33 | 1½ yards (1.37m) |



Backing
44"



Backing
44"

Additional Materials:

- Batting (6) 25" x 20" (0.64m x 0.51m)
- Thread and sewing supplies

All possible care has been taken to ensure the accuracy of this pattern. We are not responsible for printing errors or the manner in which individual work varies.

Please read the instructions carefully before starting this project. If kitting it is recommended a sample is made to confirm accuracy.

All free projects are intended to remain free and are not for resale.

Place Mat Cutting Instructions

Notes:

- Please make sure to check henryglassfabrics.net for pattern updates prior to starting the project.
- All strips are cut across the width of fabric (WOF) from selvedge to selvedge edge unless otherwise noted.

Fabric A, cut:

- (3) 4¾" x WOF; subcut
- (6) 4¾" x 16½"

Fabric B, cut:

- (4) 2½" x WOF; subcut
- (12) 2½" x 12½"

Fabric C, cut:

- (4) 2½" x WOF; subcut
- (12) 2½" x 12½"

Fabric D, fussy cut:

- (6) 11" squares each centered on a block

Fabric E, cut:

- (2) 1¾" x WOF; subcut
- (6) 1¾" x 11"
- (3) 1¾" x WOF; subcut
- (6) 1¾" x 13½"
- (2) 1¼" x WOF; subcut
- (3) 1¼" x 16½"

Fabric F, cut:

- (2) 1¾" x WOF; subcut
- (6) 1¾" x 11"
- (3) 1¾" x WOF; subcut
- (6) 1¾" x 13½"
- (2) 1¼" x WOF; subcut
- (3) 1¼" x 16½"

Fabric G, cut:

- (2) 2½" x WOF; subcut
- (24) 2½" squares
- (14) 2½" x WOF for the binding

All possible care has been taken to ensure the accuracy of this pattern. We are not responsible for printing errors or the manner in which individual work varies.

Please read the instructions carefully before starting this project. If kitting it is recommended a sample is made to confirm accuracy.

All free projects are intended to remain free and are not for resale.

Place Mat Sewing

- Sew using a $\frac{1}{4}$ " seam allowance with right sides together (RST) unless otherwise indicated. Press seams towards the darker fabric, unless otherwise indicated.
- The arrows in the figures represent the fabric print direction. Pay attention to the fabric and unit orientations when assembling the various components.

1. Sew (1) $1\frac{3}{4}$ " x 11" **Fabric F** strip to each side of (1) 11" **Fabric D** square. Sew (1) $1\frac{3}{4}$ " x $13\frac{1}{2}$ " **Fabric F** strip to the top and bottom of the **Fabric D** square. Trim the block to measure $12\frac{1}{2}$ " x $12\frac{1}{2}$ " to make (1) Unit 1 square (**Fig. 3**). Repeat to make an additional (2) Unit 1 squares.
2. Sew (1) $1\frac{3}{4}$ " x 11" **Fabric E** strip to each side of (1) 11" **Fabric D** square. Sew (1) $1\frac{3}{4}$ " x $13\frac{1}{2}$ " **Fabric E** strip to the top and bottom of the **Fabric D** square. Trim the block to measure $12\frac{1}{2}$ " x $12\frac{1}{2}$ " to make (1) Unit 2 square (**Fig. 4**). Repeat to make an additional (2) Unit 2 squares.

Fig. 3

Unit 1
make 3
F

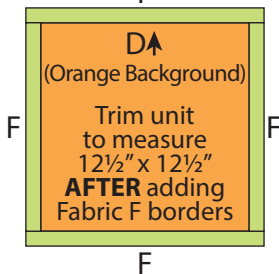
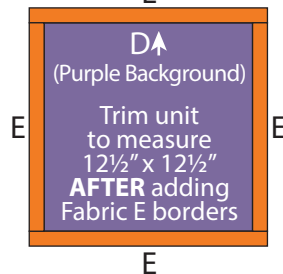


Fig. 4

Unit 2
make 3
E

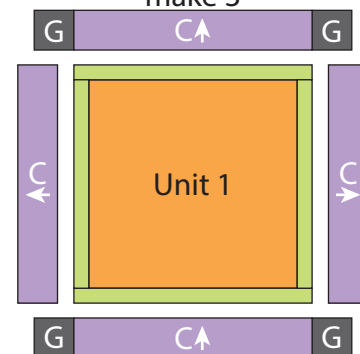


3. Sew (1) $2\frac{1}{2}$ " x $12\frac{1}{2}$ " **Fabric C** strip to each side of (1) Unit 1 square. Sew (1) $2\frac{1}{2}$ "

Fabric G square to each end of (1) $2\frac{1}{2}$ " x $12\frac{1}{2}$ " **Fabric C** strip. Repeat to make a second strip. Sew the strips to the top and bottom of the Unit 1 square to make (1) $16\frac{1}{2}$ " Block One (**Fig. 5**). Repeat to make an additional (2) Block Ones.

Fig. 5

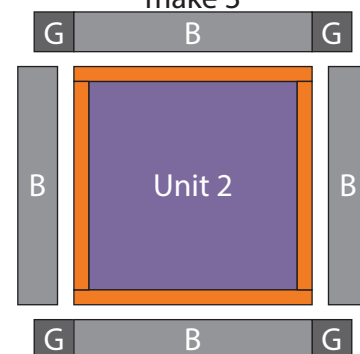
Block One
make 3



4. Sew (1) $2\frac{1}{2}$ " x $12\frac{1}{2}$ " **Fabric B** strip to each side of (1) Unit 2 square. Sew (1) $2\frac{1}{2}$ " **Fabric G** square to each end of (1) $2\frac{1}{2}$ " x $12\frac{1}{2}$ " **Fabric B** strip. Repeat to make a second strip. Sew the strips to the top and bottom of the Unit 2 square to make (1) $16\frac{1}{2}$ " Block Two (**Fig. 6**). Repeat to make an additional (2) Block Twos.

Fig. 6

Block Two
make 3



All possible care has been taken to ensure the accuracy of this pattern. We are not responsible for printing errors or the manner in which individual work varies.

Please read the instructions carefully before starting this project. If kitting it is recommended a sample is made to confirm accuracy.

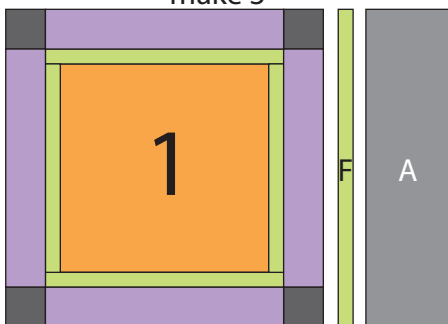
All free projects are intended to remain free and are not for resale.

Place Mat Top Assembly

- Sew (1) $1\frac{1}{4}$ " x $16\frac{1}{2}$ " **Fabric F** strip to the right side of (1) Block One (**Fig. 7**).
- Sew (1) $4\frac{3}{4}$ " x $16\frac{1}{2}$ " **Fabric A** strip to the right side of the Block One to make (1) Place Mat #1 top (**Fig. 7**). Repeat to make an additional (2) Place Mat #1 tops.

Fig. 7

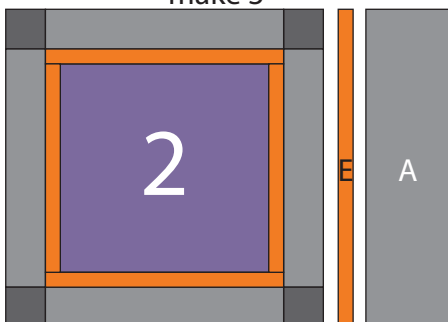
Place Mat Layout #1
make 3



- Sew (1) $1\frac{1}{4}$ " x $16\frac{1}{2}$ " **Fabric E** strip to the right side of (1) Block Two (**Fig. 8**).
- Sew (1) $4\frac{3}{4}$ " x $16\frac{1}{2}$ " **Fabric A** strip to the right side of the Block Two to make (1) Place Mat #2 top (**Fig. 8**). Repeat to make an additional (2) Place Mat #2 tops.

Fig. 8

Place Mat Layout #1
make 3



Place Mat Layering, Quilting and Finishing

- Layer the backing (wrong side up), batting, and place mat top (right side up). Baste the layers together and quilt as desired. Trim excess batting and backing even with the top of the place mat.

Place Mat Binding

- Sew together (14) $2\frac{1}{2}$ " x WOF **Fabric G** binding strips end to end with diagonal seams. Press the seams open. Press the binding strip in half wrong sides together. Cut the newly sewn strip into (6) equal pieces.
- Leaving an 8" tail of binding and beginning along an edge of the place mat top, match raw edges of the binding to the raw edges of the place mat top. Sew the binding to the outside edge around all four sides and miter corners. Stop sewing approximately 12" from where you started and backstitch.
- Lay both loose ends of binding flat along the place mat edge. Where these two loose ends meet, fold them back onto themselves and press to form a crease. Using this crease as your stitching line, sew the two open ends of the binding together, right sides matching. Trim seam to $\frac{1}{4}$ " and press seam open. Finish sewing the binding to the place mat top.
- Turn the binding over the raw edge to the back of the place mat and hand or machine stitch in place.

All possible care has been taken to ensure the accuracy of this pattern. We are not responsible for printing errors or the manner in which individual work varies.

Please read the instructions carefully before starting this project. If kitting it is recommended a sample is made to confirm accuracy.

All free projects are intended to remain free and are not for resale.