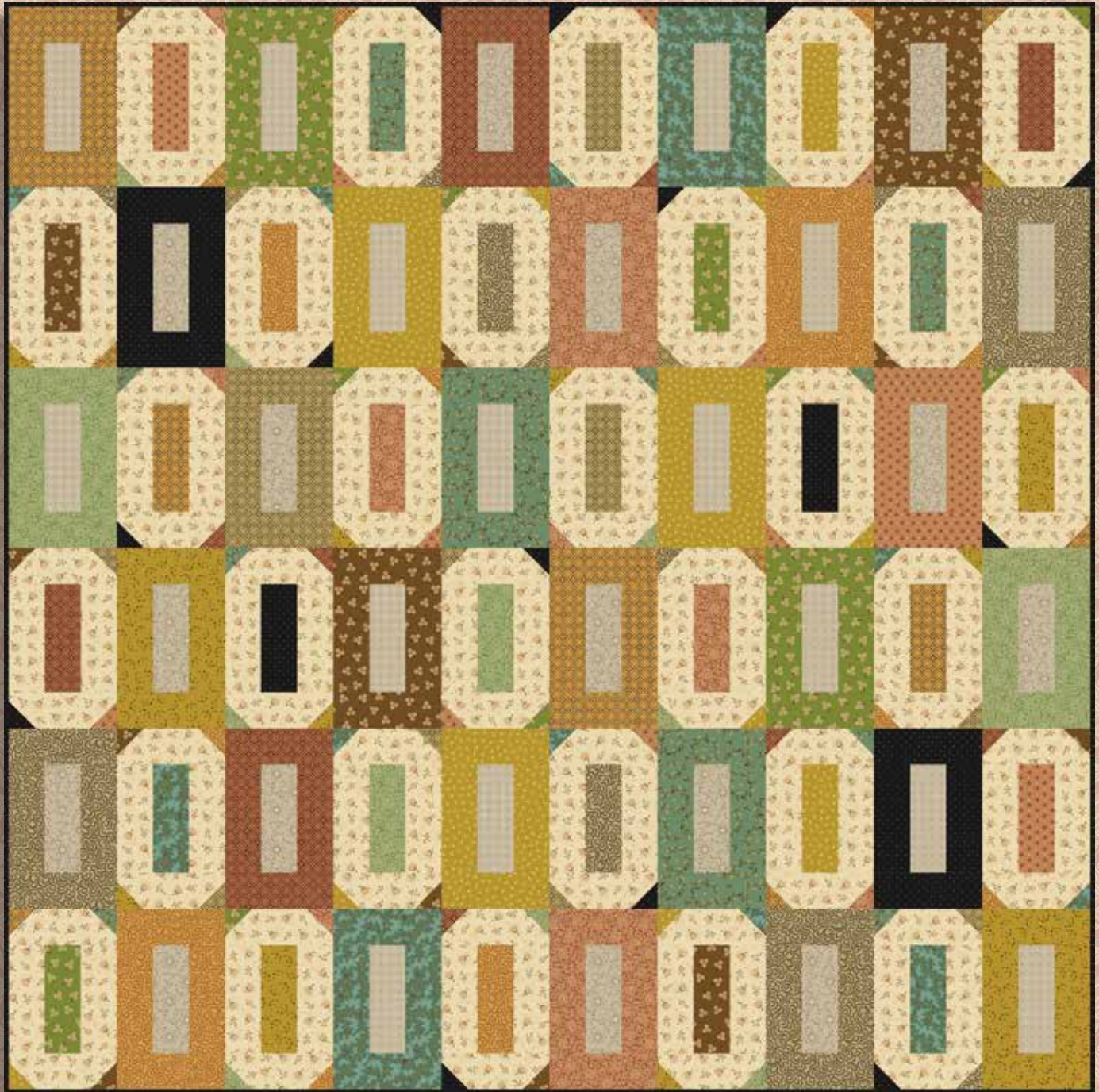


Down to Earth

by Kim Diehl



Finished Quilt Size: 60½" x 60½"

49 West 37th Street, New York, NY 10018
tel: 212-686-5194 • fax: 212-532-3525
Toll-free: 800-294-9495
www.henryglassfabrics.net

 Henry Glass & Co., Inc.



[facebook](#)

Down to Earth

Finished Quilt Size: 60½" x 60½"

MATERIALS

This quilt features prints from Kim Diehl's Harvest Thyme collection for Henry Glass Fabrics. Yardages are based on a 42" width of useable fabric. Fat quarters measure 18" x 21".



2460-30
fat quarter



2460-80
fat quarter



2460-303
fat quarter



2461-33
fat quarter



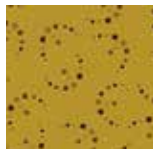
2461-66
fat quarter



2463-66
fat quarter



2463-80
fat quarter



2464-404
fat quarter



2465-80
fat quarter



2466-30
fat quarter



2466-33
fat quarter



2467-99
¾ yard



2468-48
fat quarter



2469-11
fat quarter



2470-43
fat quarter



2471-61
fat quarter



2472-404
fat quarter



2473-40
1¾ yards

Additional materials:

- 3¾ yards of fabric for backing
- 67" x 67" square of batting
- Standard sewing and quilting supplies

CUTTING

Cut all pieces across the width of the fabric in the order given unless otherwise instructed. WOF is defined as width of fabric.

From each of the 2 gray prints (2468-48 and 2470-43), cut:

5 strips, 2½" x WOF; crosscut into 15 rectangles, 2½" x 6½" (combined total of 30)

From the black print (2467-99), cut:

6 binding strips, 2½" x WOF; remove the selvages
2 strips, 2½" x WOF; crosscut into 8 rectangles, 2½" x 6½". Organize the rectangles into 2 A Block patchwork sets, with each set consisting of 4 black rectangles.

Reserve the remainder of the black print.

From each of the fat quarters of assorted prints (not the 2 gray prints, the black print, or the cream print), cut total of:

8 rectangles, 2½" x 6½". Choose your favorite print and cut an additional 4 rectangles, 2½" x 6½".

Organize the rectangles by print into 28 sets of A Block patchwork sets, with each set consisting of 4 matching-print rectangles. (With the previous two A Block black patchwork sets, you'll have a combined total of 30 sets.)

Reserve the remainder of the assorted-print fat quarters.

From the reserved remainder of all assorted prints and the black print (excluding the 2 gray prints and the cream print), cut a combined total of:

30 rectangles, 2½" x 6½"

120 squares, 2" x 2"

Choosing the prints randomly, organize the above rectangles and squares into 30 B Block patchwork sets, with each set consisting of 1 rectangle and 4 assorted-print squares.

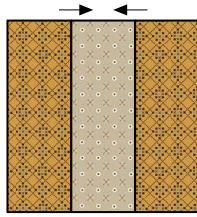
From the cream print (2473-40), cut:

20 strips, 2½" x WOF; crosscut into 120 rectangles, 2½" x 6½". Add 4 of these cream rectangles to each of the B Block patchwork sets to complete them.

PIECING the A BLOCKS

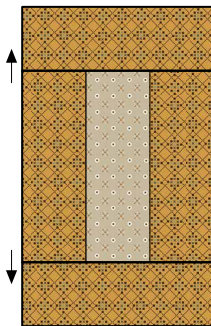
Sew all pieces with right sides together using a $\frac{1}{4}$ " seam allowance unless otherwise noted. Press the seam allowances as shown by the arrows or otherwise instructed.

- 1 Choose one A Block patchwork set and one gray $2\frac{1}{2}$ " x $6\frac{1}{2}$ " rectangle (the gray prints can be used randomly, as you choose).
- 2 Join an assorted-print $2\frac{1}{2}$ " x $6\frac{1}{2}$ " rectangle to each long side of the gray rectangle. Press. The pieced middle unit should measure $6\frac{1}{2}$ " square, including the seam allowances.



Make 1 A Block middle unit,
 $6\frac{1}{2}$ " x $6\frac{1}{2}$ ".

- 3 Use the remaining two assorted-print $2\frac{1}{2}$ " x $6\frac{1}{2}$ " rectangles to complete the A block, joining a rectangle to the top and bottom edges of the middle unit as shown. Press. The pieced A Block should measure $6\frac{1}{2}$ " x $10\frac{1}{2}$ ", including the seam allowances.

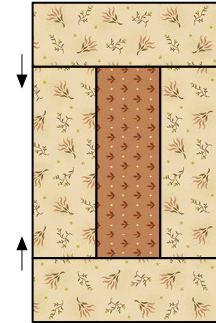


Pieced A Block,
 $6\frac{1}{2}$ " x $10\frac{1}{2}$ "

- 4 Repeat steps 1 through 3 to piece a total of 30 A Blocks.

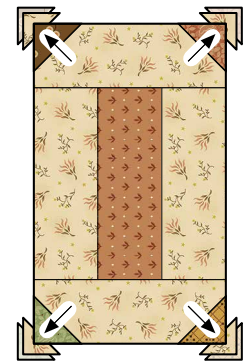
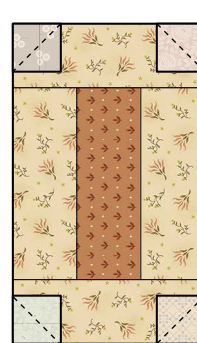
PIECING the B BLOCKS

- 1 Choose one B Block patchwork set. Use a pencil and an acrylic ruler to draw a diagonal sewing line from corner to corner on the wrong side of each assorted-print 2" square.
- 1 Using the four cream $2\frac{1}{2}$ " x $6\frac{1}{2}$ " rectangles and the assorted-print $2\frac{1}{2}$ " x $6\frac{1}{2}$ " rectangle, follow steps 1–3 of "Piecing the A Blocks" on this page to piece one basic block, but alter the pressing direction of the seams in the top and bottom rows as shown.



Basic B Block unit,
 $6\frac{1}{2}$ " x $10\frac{1}{2}$ "

- 3 Layer a prepared assorted-print 2" square onto each corner of the pieced B Block as shown. Stitch the layered squares along the drawn diagonal lines. Fold the resulting inner triangles open, aligning the corners with the cream corners of the block. Press. Trim away the layers beneath the top triangles, leaving $\frac{1}{4}$ " seam allowances.

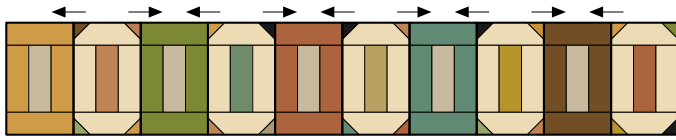


Pieced B block,
 $6\frac{1}{2}$ " x $10\frac{1}{2}$ "

- 4 Repeat the Block B patchwork steps to piece a total of 30 B Blocks.

PIECING the QUILT TOP

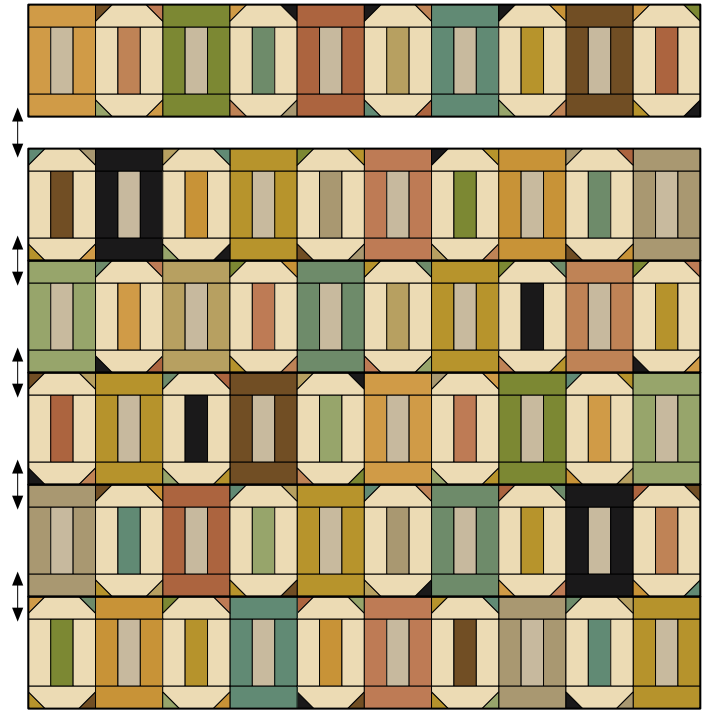
- 1 Choose five pieced A Blocks and five pieced B Blocks. Beginning with an A Block, lay out the A and B Blocks in alternating positions as shown. Join the blocks. Press the seam allowances toward the A blocks. The pieced block row should measure $10\frac{1}{2}$ " x $60\frac{1}{2}$ ", including the seam allowances.



Pieced block row,
 $10\frac{1}{2}$ " x $60\frac{1}{2}$ "

- 2 Repeat step 1 to piece a total of 6 block rows.

- 3 Using the assembly diagram as a guide, lay out the pieced block rows, rotating every other block row 180° . Join the rows. Press. The pieced quilt top should measure $60\frac{1}{2}$ " square, including the seam allowances.



Assembly diagram.
Pieced quilt top,
 $60\frac{1}{2}$ " x $60\frac{1}{2}$ "

COMPLETING the QUILT

Layer and baste the quilt top, batting, and backing. Quilt the layers. Join the black binding strips to make one length and use it to bind the quilt.

Every effort has been made to ensure that all projects are error free. All the information is presented in good faith, however no warranty can be given nor results guaranteed as we have no control over the execution of instructions. Therefore, we assume no responsibility for the use of this information or damages that may occur as a result. When errors are brought to our attention, we make every effort to correct and post a revision as soon as possible. Please make sure to check www.henryglassfabrics.com for pattern updates prior to starting the project. We also recommend that you test the project prior to cutting for kits. Finally, all free projects are intended to remain free to you and are not for resale or other forms of distribution.



©2026 Kim Diehl