

Every Heart Beats True Banner

by Kim Diehl



Finished Size: 30½" x 48½"

 Henry Glass & Co., Inc.



49 West 37th Street, New York, NY 10018
tel: 212-686-5194 • fax: 212-532-3525
Toll-free: 800-294-9495
www.henryglassfabrics.net

facebook

Every Heart Beats True Banner

Finished Size: 30½" x 48½"

DESIGN NOTES

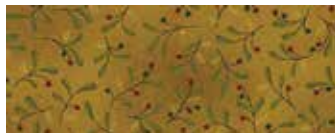
This Americana banner design is versatile and can be personalized to suit your own personal taste. If appliqué isn't your thing, skip it and omit that portion of the design! If you would prefer to exclude the hand-stitched accents, you can also choose to omit the embroidered dates and the "Every Heart Beats True" worded row at the bottom of the banner. If you choose to omit the 3" x 30" hand-stitched row, consider using your scraps (as your fabrics permit) to substitute 10 scrappy 3" nine-patch units end to end, with each unit stitched from nine squares cut at 1½" each. This handful of options will enable you to make a banner that's uniquely yours!

MATERIALS

This quilt features prints from Kim Diehl's Every Heart Beats True collection for Henry Glass Fabrics. Yardages are based on a 42" width of useable fabric. Fat quarters are 18" x 21"; fat eighths are 9" x 21"; chubby sixteenths are 9" x 10½".



2684-30
Amber Butternut Bramble
chubby sixteenth



2685-404
Gold Etched Vines
fat eighth



2686-88
Cranberry Cabbage Roses
⅓ yard



2687-88
Wine Scalloped Crescents
⅝ yard



2688-11
Dusty Aqua Stars and Stripes
⅝ yard



2689-77
Sapphire Froth and Bubbles
fat quarter



2690-33
Toast Pineapple Grove
chubby sixteenth



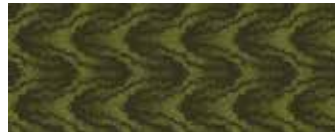
2690-66
Deep Emerald Pineapple Grove
fat eighth



2691-303
Pumpkin Scalloped Crescents
chubby sixteenth



2692-22
Salmon Sprigs and Stars
chubby sixteenth



2693-66
Evergreen Prairie Grass
fat eighth



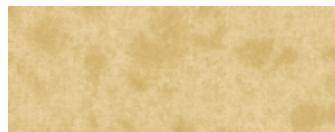
2694-66
Sage Paisley Patch
fat eighth



2695-77
Indigo Cornflowers
fat quarter



2696-99
Onyx Midnight Sky
chubby sixteenth



2697-44
Wheat Parchment Paper
⅔ yard



2698-44
Wheat Scattered Seeds
⅔ yard

Additional materials:

- 1½ yards of fabric for backing
- 37" x 55" rectangle of batting
- Standard sewing and quilting supplies
- Supplies for your favorite appliqué method
- Bias bar to produce ⅜"-wide stem.
- Water-soluble fabric or school glue for preparing the bias-tube vines
- Size 5 embroidery needle, a water-soluble marker, and black perle cotton or embroidery floss, if you choose to add the hand-stitched accents

CUTTING

Cut all pieces across the width of the fabric in the order given unless otherwise instructed. WOF is defined as width of fabric. For greater ease, instructions for cutting the appliqués are provided separately, after the steps for piecing the banner. Please cut all patchwork pieces carefully and frugally, to ensure there are plenty of scraps for the appliqués.

From the sapphire print (2689-77), cut:

1 strip, 4½" x WOF; from this strip, cut 1 square, 4½" x 4½", and 4 squares, 2½" x 2½"
4 strips, 2½" x WOF; crosscut into 16 rectangles, 2½" x 4½"

Organize all the sapphire pieces into a star unit patchwork set. Reserve the remainder of the sapphire print.

From the indigo print (2695-77), cut:

2 strips, 2½" x WOF; crosscut into 4 rectangles, 2½" x 4½", and 4 squares, 2½" x 2½"
3 strips, 1½" x WOF; crosscut into 16 rectangles, 1½" x 2½", and 16 squares, 1½" x 1½"

Add all the indigo pieces to the star unit patchwork set. Reserve the remainder of the indigo print.

From the dusty aqua print (2688-11), cut:

4 binding strips, 2½" x WOF; remove the selvages
1 strip, 2½" x WOF; from this strip, cut 8 squares, 2½" x 2½", and 4 squares, 2" x 2"

Add all the dusty aqua pieces, excluding the binding strips, to the star unit patchwork set. Reserve the remainder of the dusty aqua print.

From the wheat scattered seeds print (2698-44), cut:

3 strips, 2½" x WOF; from these strips, cut:

- 12 squares, 2½" x 2½"
- 12 rectangles, 2½" x 4½"
- 4 rectangles, 2½" x 3½"

2 strips, 1½" x WOF; crosscut into 48 squares, 1½" x 1½"

From the wheat parchment paper print (2697-44), cut:

1 strip, 2½" x WOF; crosscut into 8 squares, 2½" x 2½"
4 strips, 3½" x WOF; from these strips, cut 2 strips, 3½" x 40½", and two strips, 3½" x 24½"
1 strip, 4½" x WOF; crosscut into 1 strip, 4½" x 30½"

From the wine print (2687-88), cut:

8 strips, 2" x WOF; crosscut into 4 strips, 2" x 40½", and 4 strips, 2" x 24½"
1 strip, 2½" x WOF; crosscut into 1 strip, 2½" x 24½"
Reserve the remainder of the wine print.

From the cranberry print (2686-88), cut:

4 strips, 1½" x WOF; crosscut into 2 strips, 1½" x 40½", and 2 strips, 1½" x 24½"
Reserve the remainder of the wine print.

For the bottom scrappy flying geese patchwork, from all assorted prints, and the scraps of all previously used prints (excluding the wheat prints), cut a combined total of:

28 squares, 2½" x 2½"

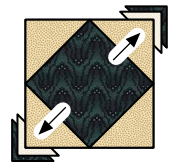
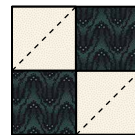
4 squares, 1½" x 1½"

Remember to cut the above assorted-print pieces frugally, and reserve the scraps for the appliqués.

PIECING PATCHWORK SEGMENTS for the STAR UNIT

Sew all pieces with right sides together using a ¼" seam allowance unless otherwise noted. Press the seam allowances as shown by the arrows or otherwise instructed.

- 1 Choose the star unit patchwork set, the 12 wheat scattered seeds 2½" and 1½" squares, and the eight wheat parchment paper 2½" squares. Use a pencil and an acrylic ruler to draw a diagonal sewing line from corner to corner on the wrong side of each of the wheat 2½" and 1½" squares.
- 2 Layer a prepared wheat scattered seeds 2½" square onto to opposite corners of the sapphire 4½" square as shown. Stitch the wheat squares along the drawn diagonal lines. Fold the resulting inner triangles open, aligning the corners with the corners of the bottom sapphire square. Press. Trim away the layers beneath the top wheat triangles, leaving ¼" seam allowances. In the same manner, add wheat triangles to the remaining corners of the sapphire square. The pieced large star center unit should measure 4½" square, including the seam allowances.



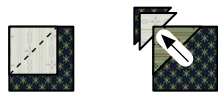
Large star center unit,
4½" x 4½"

- 3 Referring to step 2 and using the remaining eight prepared wheat $2\frac{1}{2}$ " squares and the four indigo $2\frac{1}{2}$ " x $4\frac{1}{2}$ " rectangles, sew a triangle point and a mirror-image triangle point to each of the rectangles as shown. The four pieced large star-point units should measure $2\frac{1}{2}$ " x $4\frac{1}{2}$ ", including the seam allowances.



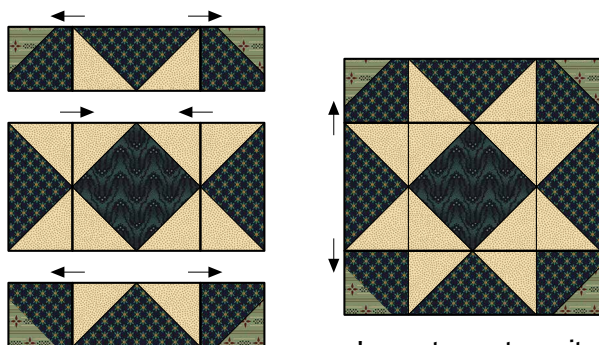
Make 4 large star-point units, $2\frac{1}{2}$ " x $4\frac{1}{2}$ ".

- 4 Draw a diagonal sewing line on the wrong side of each of the four dusty aqua 2" squares as previously instructed. (Tip from Kim: When I sew "stitch-and-fold" triangles using striped or directional prints, I've learned to draw two diagonal lines on the wrong side of the square to form an X. Having two drawn lines instead of one enables you to turn the print in any direction for stitching, producing a finished triangle with the print positioned in any way you choose.) Sew an aqua triangle to one corner of each of the four indigo $2\frac{1}{2}$ " squares as previously instructed.



Make 4 large star corner units, $2\frac{1}{2}$ " x $2\frac{1}{2}$ ".

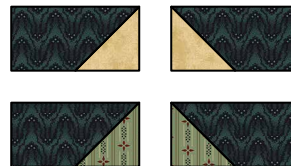
- 5 Lay out the units from steps 2–4 in three horizontal rows as shown. Join the units in each row. Press. Join the rows. Press. The pieced large center star unit should measure $8\frac{1}{2}$ " square, including the seam allowances.



Large star center unit, $8\frac{1}{2}$ " x $8\frac{1}{2}$ ".

- 6 Draw diagonal sewing lines on the wrong side of the eight wheat parchment paper and eight dusty aqua $2\frac{1}{2}$ " squares as previously instructed.

- 7 Referring to the illustration and using the 16 sapphire $2\frac{1}{2}$ " x $4\frac{1}{2}$ " rectangles and the prepared wheat and dusty aqua squares, stitch four wheat and sapphire patchwork rectangles and four mirror-image patchwork rectangles, and four dusty aqua and sapphire patchwork rectangles and four mirror-image patchwork rectangles as previously instructed.



Make 4 and 4 mirror-image units in each color, $2\frac{1}{2}$ " x $4\frac{1}{2}$ ".

- 8 Use 16 of the prepared wheat $1\frac{1}{2}$ " squares from step 1 and the four sapphire $2\frac{1}{2}$ " squares to sew four small star center units as instructed in step 2. The pieced center units should measure $2\frac{1}{2}$ " square, including the seam allowances.



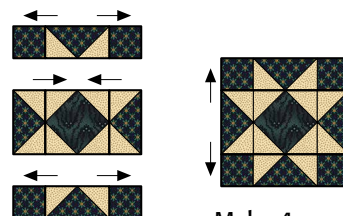
Make 4 small star center units, $2\frac{1}{2}$ " x $2\frac{1}{2}$ ".

- 9 Using the remaining prepared wheat $1\frac{1}{2}$ " squares and the 16 indigo $1\frac{1}{2}$ " x $2\frac{1}{2}$ " rectangles, make 16 small star-point units as previously instructed for the large star unit. The small star-point units should measure $1\frac{1}{2}$ " x $2\frac{1}{2}$ ", including the seam allowances.



Make 16 small star-point units, $1\frac{1}{2}$ " x $2\frac{1}{2}$ ".

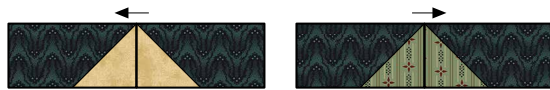
- 10 Lay out one pieced small star center unit from step 8, four pieced small star-point units from step 9, and four indigo $1\frac{1}{2}$ " squares in three horizontal rows as shown. Join the pieces in each row. Press. Join the rows. Press. Repeat to piece a total of four small star units measuring $4\frac{1}{2}$ " square, including the seam allowances.



Make 4 small star units, $4\frac{1}{2}$ " x $4\frac{1}{2}$ ".

ASSEMBLING the STAR UNIT

- 1 Select one wheat and one mirror-image wheat patchwork rectangle from step 7 on page 4. Join the rectangles along the wheat ends. Press the seam allowances to the left. Repeat to piece a total of four wheat flying-geese rectangles measuring $2\frac{1}{2}" \times 8\frac{1}{2}"$, including the seam allowances. In the same manner, piece four dusty aqua flying-geese rectangles in the same size, pressing the seam allowances to the right.



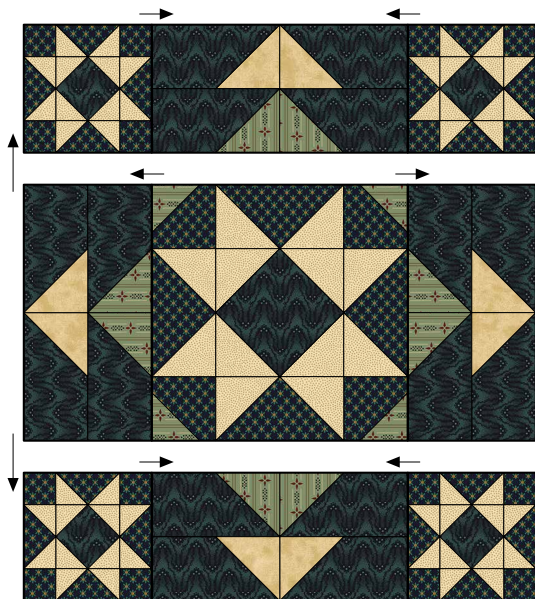
Make 4 of each unit,
 $2\frac{1}{2}" \times 8\frac{1}{2}"$.

- 2 Join a wheat flying-geese rectangle and an aqua flying-geese rectangle as shown. Press. Repeat to piece a total of four double flying-geese units measuring $4\frac{1}{2}" \times 8\frac{1}{2}"$, including the seam allowances.



Make 4 double
flying-geese units,
 $4\frac{1}{2}" \times 8\frac{1}{2}"$.

- 3 Lay out the four pieced double flying-geese units, the pieced large star unit, and the four pieced small star units in three horizontal rows as shown. Join the units in each row. Press. Join the rows. Press. The pieced star unit should measure $16\frac{1}{2}"$ square, including the seam allowances.



Star unit,
 $16\frac{1}{2}" \times 16\frac{1}{2}"$

STITCHING the STRIPE UNITS

- 1 Join a wine $2" \times 40\frac{1}{2}"$ strip to each long side of a cranberry $1\frac{1}{2}" \times 40\frac{1}{2}"$ strip. Press. Repeat to piece two long red units measuring $4\frac{1}{2}" \times 40\frac{1}{2}"$, including the seam allowances.



Make 2 long red units,
 $4\frac{1}{2}" \times 40\frac{1}{2}"$.

- 2 Repeat step 1 using the wine $2" \times 24\frac{1}{2}"$ and cranberry $1\frac{1}{2}" \times 24\frac{1}{2}"$ strips to piece a total of two short red units measuring $4\frac{1}{2}" \times 24\frac{1}{2}"$, including the seam allowances.
- 3 Referring to the quilt image on the handout cover, join two pieced long red units and two wheat parchment paper $3\frac{1}{2}" \times 40\frac{1}{2}"$ strips in alternating positions to piece one long stripe unit measuring $14\frac{1}{2}" \times 40\frac{1}{2}"$, including the seam allowances. Press the seam allowances toward the red prints.
- 4 Again referring to the handout cover, join two pieced short red units, two wheat parchment paper $3\frac{1}{2}" \times 24\frac{1}{2}"$ strips, and the one wine $2\frac{1}{2}" \times 24\frac{1}{2}"$ strip in alternating positions to piece one short stripe unit measuring $16\frac{1}{2}" \times 24\frac{1}{2}"$, including the seam allowances. Press the seam allowances toward the red prints.

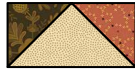
PIECING the STARS and STRIPES SECTION of the QUILT

Join the top of the short stripe unit to the bottom edge of the Star unit. Press the seam allowances toward the short stripe unit. Join this pieced unit to the wheat edge of the long stripe unit. Press the seam allowances toward the wheat print. The pieced stars and stripes section of the quilt should measure $30\frac{1}{2}" \times 40\frac{1}{2}"$, including the seam allowances.

PIECING and ADDING the SCRAPPY FLYING-GEESE UNIT

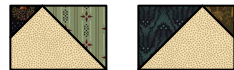
1 Select the 12 wheat scattered seeds $2\frac{1}{2}$ " x $4\frac{1}{2}$ " rectangles, the 28 assorted-print $2\frac{1}{2}$ " squares and the four assorted-print $1\frac{1}{2}$ " squares. Prepare the assorted-print $2\frac{1}{2}$ " and $1\frac{1}{2}$ " squares with diagonal sewing lines as previously instructed. Set aside four prepared assorted-print $2\frac{1}{2}$ " squares and four prepared assorted-print squares for later use.

2 Use the remaining 24 prepared assorted-print $2\frac{1}{2}$ " squares and the 12 wheat $2\frac{1}{2}$ " x $4\frac{1}{2}$ " rectangles to piece 12 long scrappy flying-geese units as previously instructed, with each unit measuring $2\frac{1}{2}$ " x $4\frac{1}{2}$ ", including the seam allowances.



Make 12 long scrappy units, $2\frac{1}{2}$ " x $4\frac{1}{2}$ ".

3 Choose the four wheat scattered seeds $2\frac{1}{2}$ " x $3\frac{1}{2}$ " rectangles, and the reserved assorted-print $2\frac{1}{2}$ " and $1\frac{1}{2}$ " squares from step 1. Use these squares and rectangles to piece a total of two short scrappy flying geese units and two short mirror-image scrappy flying geese units as shown.



Make 12 short units and 2 short mirror-image units, $2\frac{1}{2}$ " x $3\frac{1}{2}$ ".

4 Join six long scrappy flying-geese units end to end. Press the seam allowances to one side, each in the direction that produces the best point. Referring to the illustration, join a short scrappy flying-geese unit and a short mirror-image flying-geese unit to the ends of the pieced scrappy flying-geese strip. Press the seam allowances to one side, again in the direction that produces the best point. Repeat to piece a total of two scrappy flying-geese strips measuring $2\frac{1}{2}$ " x $30\frac{1}{2}$ ", including the seam allowances.



Make 2 scrappy flying-geese strips, $2\frac{1}{2}$ " x $30\frac{1}{2}$ ".

5 Using the quilt image on the handout cover as a guide, join the wheat edges of the two pieced scrappy flying-geese strips from the previous step to the long sides of the wheat parchment paper $4\frac{1}{2}$ " x $30\frac{1}{2}$ " strip. Press the seam allowances toward the wheat parchment paper strip.

6 Join the pieced scrappy flying-geese unit to the bottom striped edge of the previously pieced stars and stripes unit. Press the seam allowances toward the stripes. The pieced banner should now measure $30\frac{1}{2}$ " x $48\frac{1}{2}$ ", including the seam allowances.

APPLIQUÉING and EMBROIDERING the BANNER

Appliqué pattern pieces and lettering for embroidery begin on page 8.

1 Use your favorite method to prepare each of the appliqué shapes as shown in the banner image, and referring to the colors suggested for each appliqué as itemized on page 7. If you plan to embroider dates onto the vase as shown in the quilt image, please use a light box (or a window) and a water-soluble marker to trace the dates onto the vase appliqué. Use your favorite embroidery stitch, such as a stem stitch or a simple running stitch, and a size 5 embroidery needle threaded with black perle cotton or 2-3 strands of black embroidery floss to embroider the dates.

2 From the evergreen prairie grass print, use a rotary cutter and an acrylic ruler to cut enough $1\frac{1}{4}$ "-wide bias strips to make a length approximately 55-60" long when joined together using straight (not diagonal) seams; press the seam allowances to one side, all in the same direction. Please note that these strips don't need to be cut at a true 45 degree angle, positioning them at a gentle bias angle will produce enough stretch and flexibility to curve the vine and stems as you like.

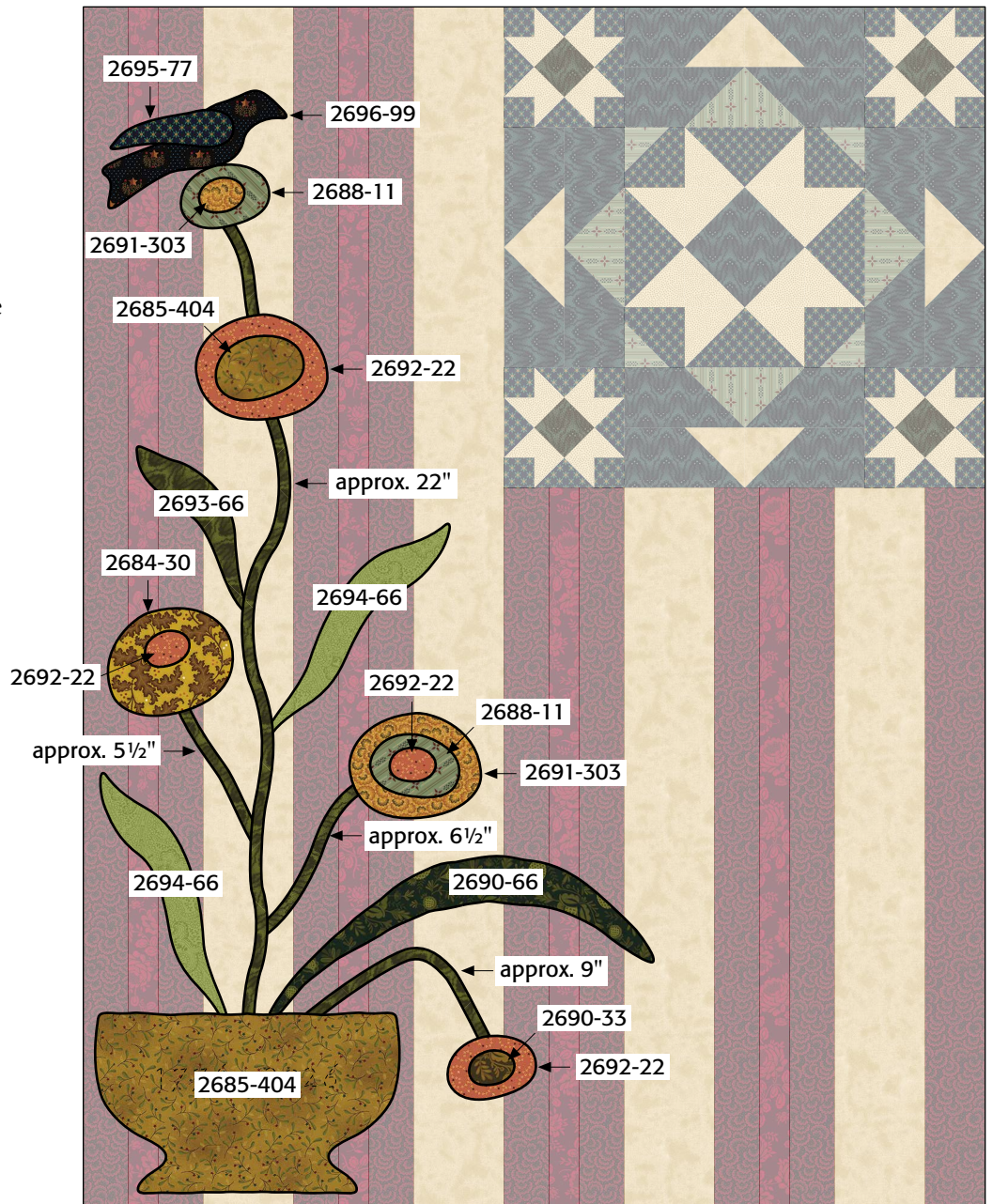
3 Slide the bias bar through the sewn evergreen tube and press it flat with a hot iron, centering the seam allowance so that it'll be hidden when the vine is turned to the front for appliquéing. Once the vine has been pressed, apply small dots of liquid fabric glue underneath the pressed seam allowance and use the hot iron once again to heat-set and anchor it in place.



4 Once the appliques have been prepared, use the quilt image at right to layout the vase, leaves, flowers, and bird. As a rule of thumb, I find it works best to position my appliques in a way that pleases me, and then I cut the pieced and prepared vine into the needed lengths for the center vine and shorter stems.

5 Remove all but the center vine and stems, and the bottommost appliques; pin or baste in place, ensuring that any pieces that overlap or are tucked underneath another applique do so by approximately 1/4" to prevent fraying. Use your favorite applique method and work from the bottom layer to the top to stitch all appliques in place.

6 If you've chosen to include the "Every Heart Beats True" sentiment for your banner, please use the written lettering provided on page 10 as previously instructed, centering the words onto the banner and embroidering them as previously instructed.



Applique placement diagram

COMPLETING the QUILT

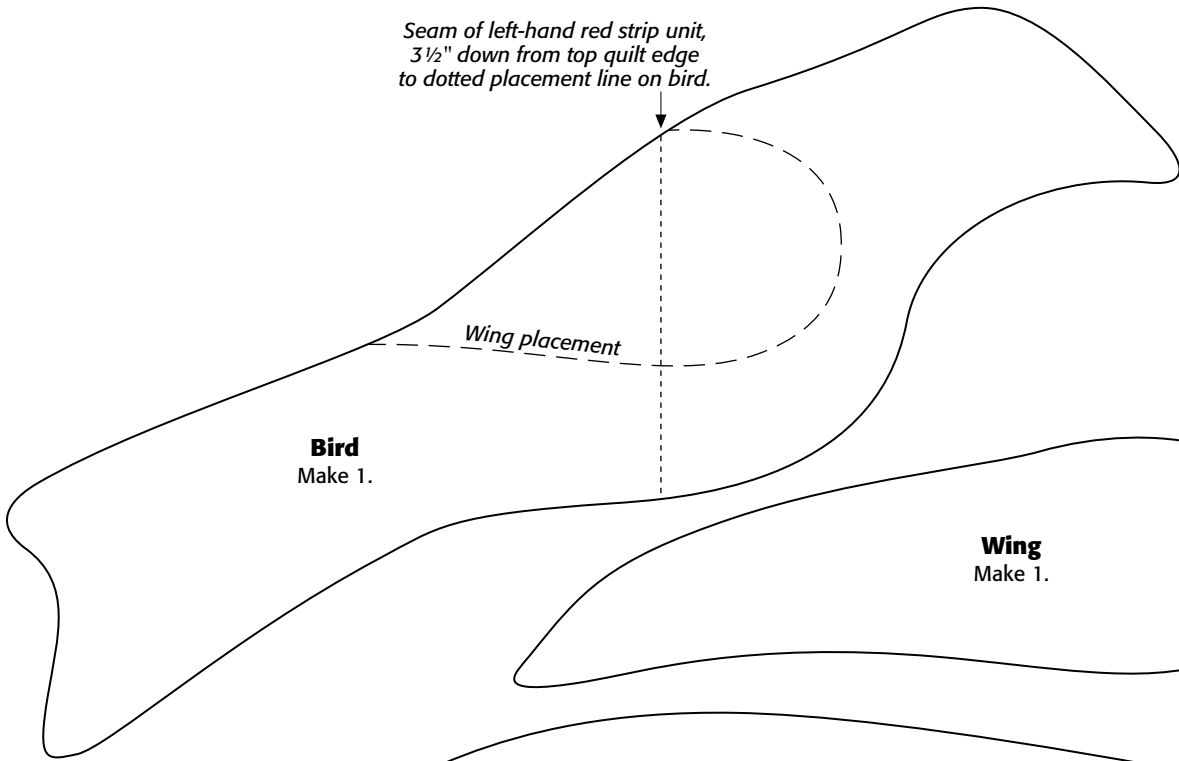
Layer and baste the quilt top, batting, and backing. Quilt the layers. Join the dusty aqua binding strips to make one length and use it to bind the quilt.

Every effort has been made to ensure that all projects are error free. All the information is presented in good faith, however no warranty can be given nor results guaranteed as we have no control over the execution of instructions. Therefore, we assume no responsibility for the use of this information or damages that may occur as a result. When errors are brought to our attention, we make every effort to correct and post a revision as soon as possible. Please make sure to check www.henryglassfabrics.com for pattern updates prior to starting the project. We also recommend that you test the project prior to cutting for kits. Finally, all free projects are intended to remain free to you and are not for resale or other forms of distribution.



©2026 Kim Diehl

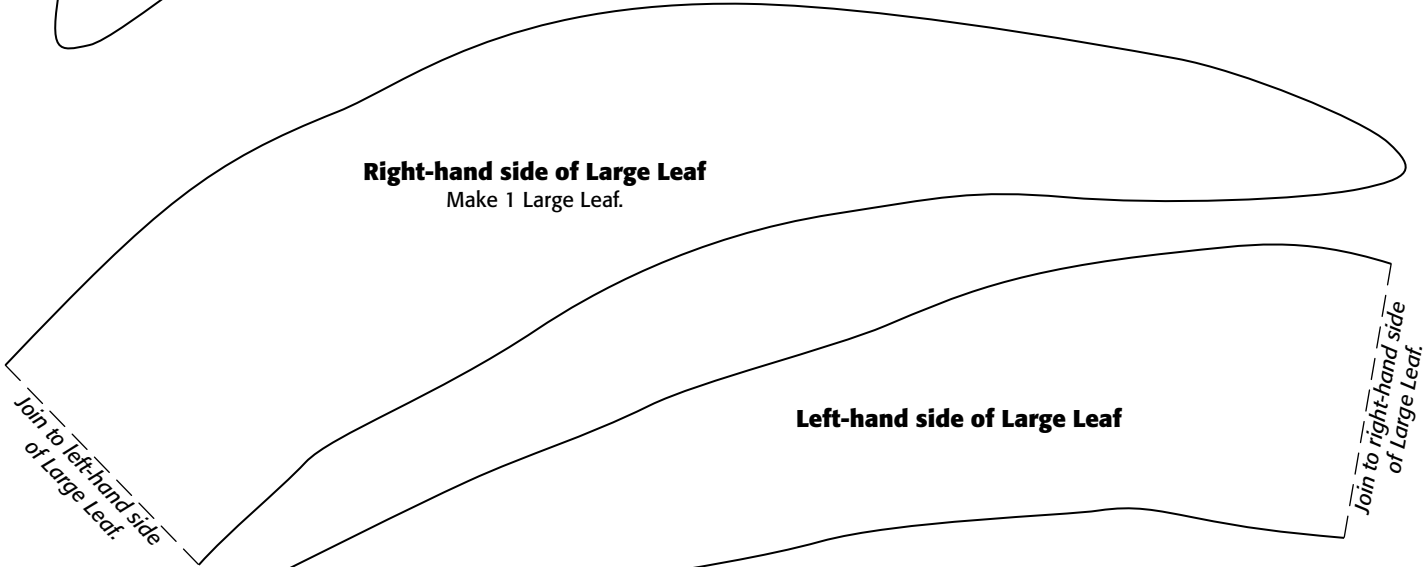
Seam of left-hand red strip unit,
3½" down from top quilt edge
to dotted placement line on bird.



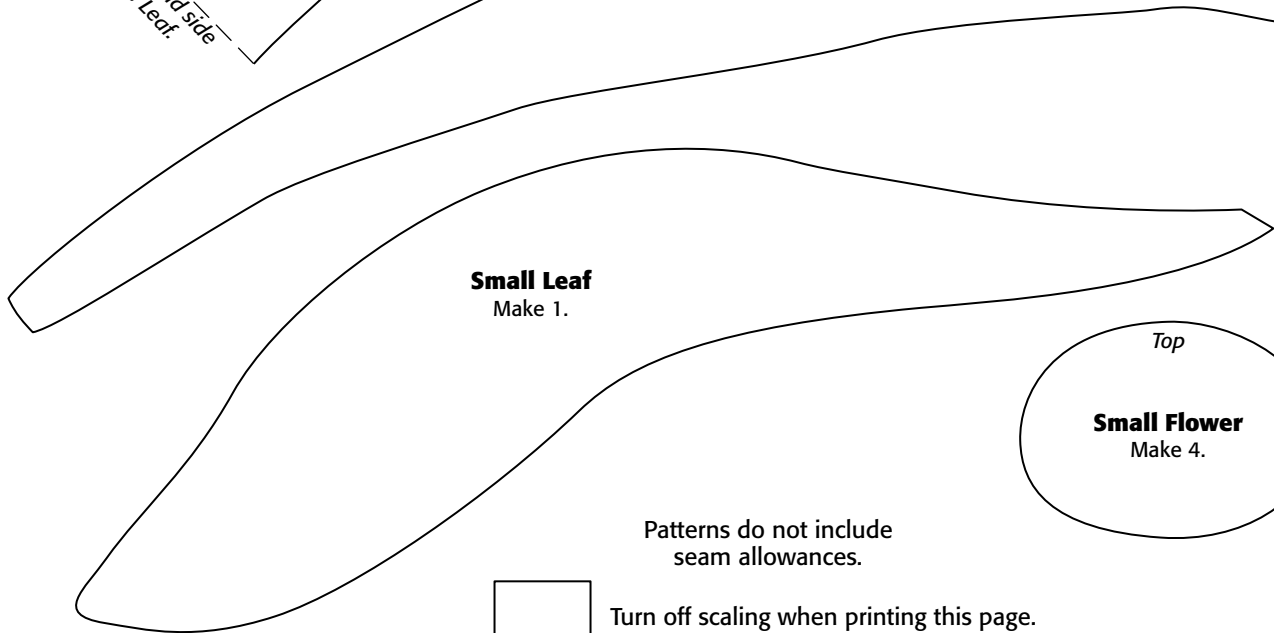
Bird
Make 1.

Wing
Make 1.

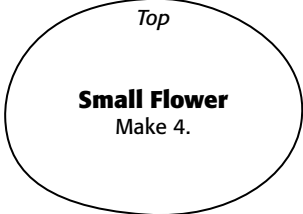
Right-hand side of Large Leaf
Make 1 Large Leaf.



Left-hand side of Large Leaf



Small Leaf
Make 1.



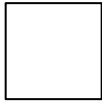
Small Flower
Make 4.

Patterns do not include
seam allowances.

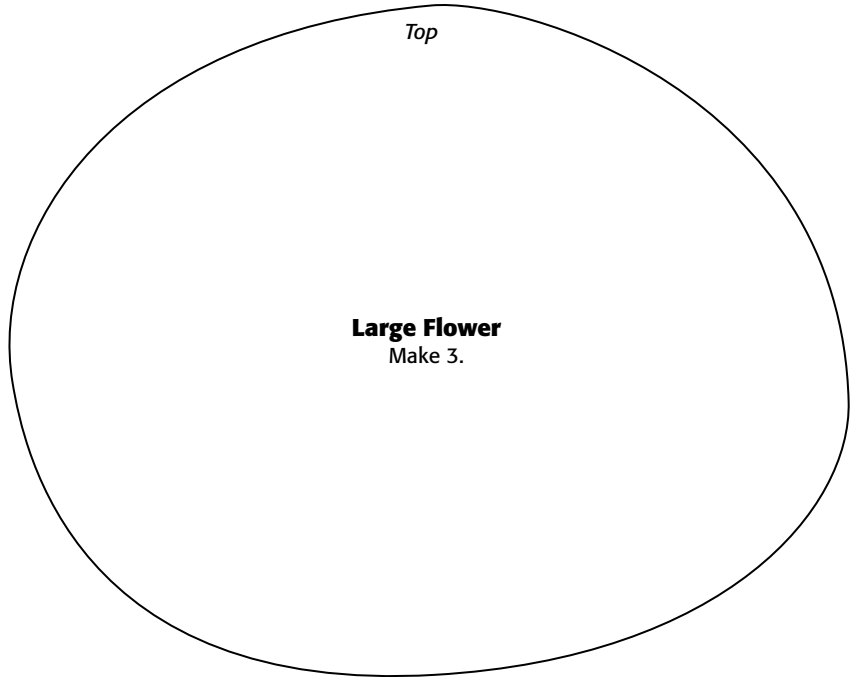


Turn off scaling when printing this page.
The box at left should measure ½" x ½".

Patterns do not include
seam allowances.

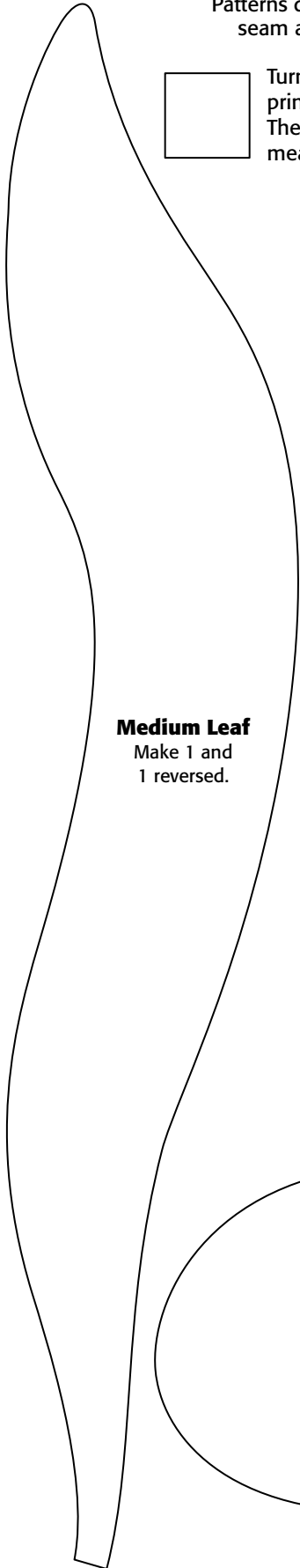


Turn off scaling when
printing this page.
The box at left should
measure 1/2" x 1/2".

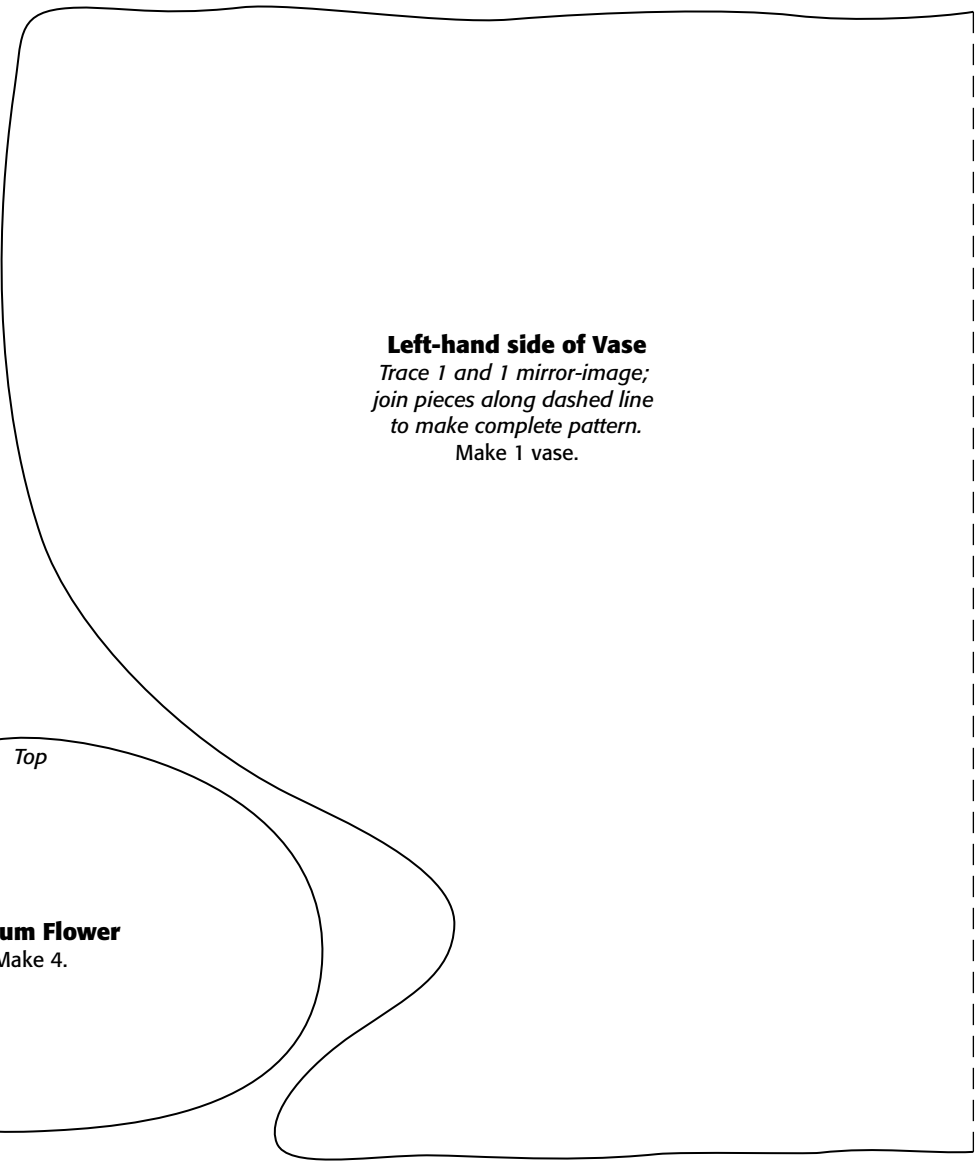


Top

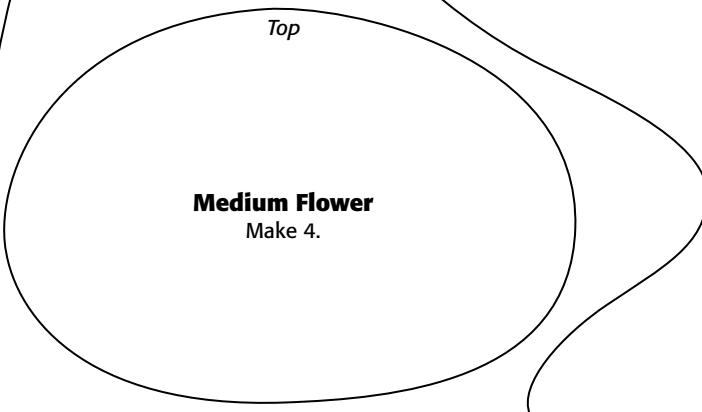
Large Flower
Make 3.



Medium Leaf
Make 1 and
1 reversed.



Left-hand side of Vase
*Trace 1 and 1 mirror-image;
join pieces along dashed line
to make complete pattern.*
Make 1 vase.



Top

Medium Flower
Make 4.

EVERY
HEART
BEATS
TRUE

1776 ~ 2026

Embroidery Patterns



Turn off scaling when printing this page.
The box at left should measure 1/2" x 1/2".