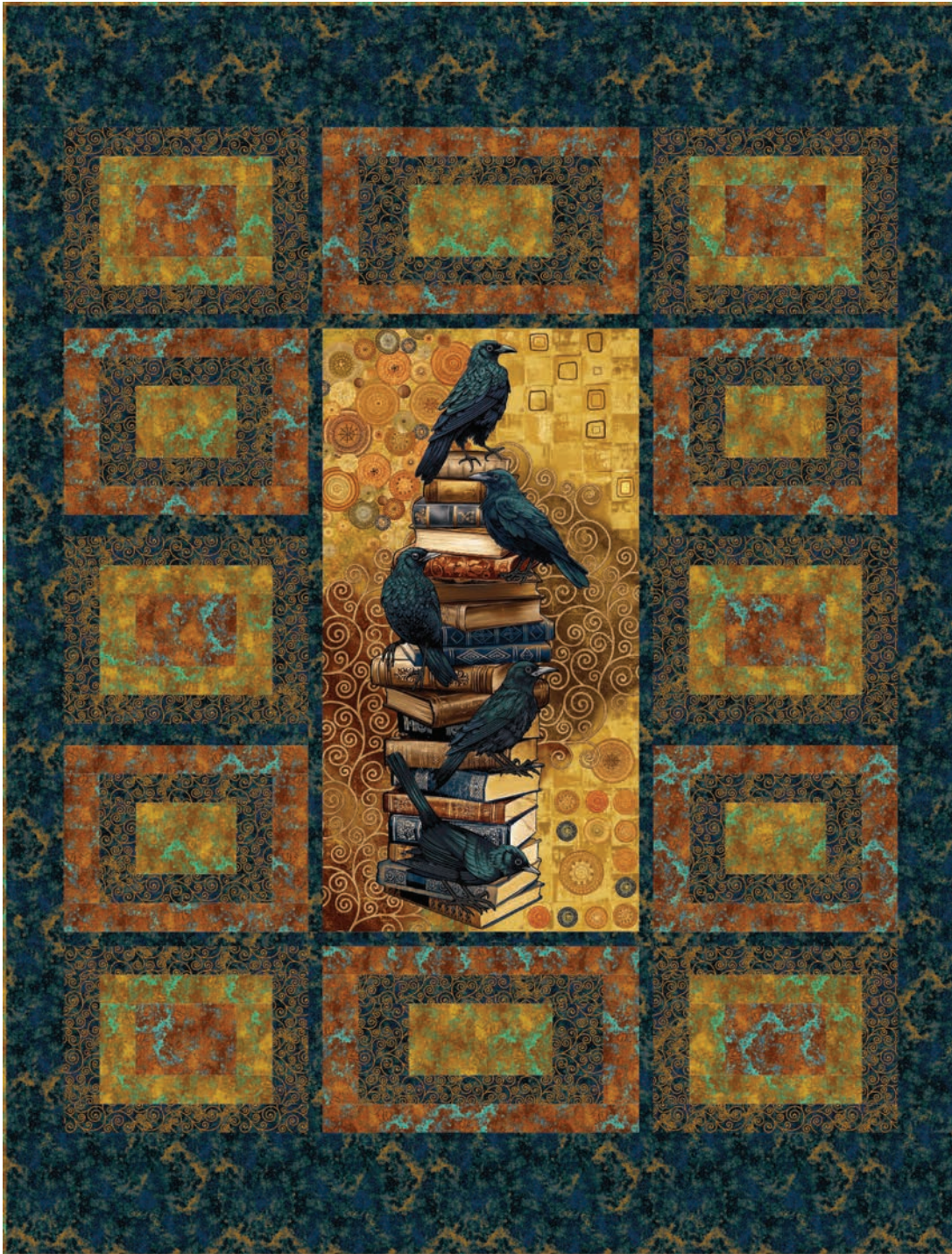


Crow-Mazing

by Jan Mott



Quilt size: 66" x 87" (1.68m x 2.21m)

Skill Level: Advanced Beginner

Crow Tales Quilt

Designed by Crane Design by Jan Mott

www.henryglassfabrics.net

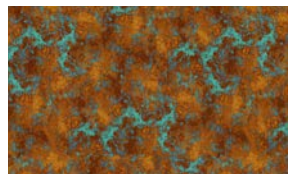
 **Henry Glass & Co., Inc.**

Crow Tales Quilt Ordering Guide

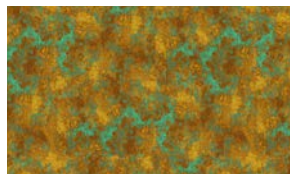
SKU	Yards	Meters	6 Kits	12 Kits
 3442-77	1 1/2 yds	1.37m	1 bolt	2 bolts
 3443-35	1 1/8 yds	1.03m	1 bolt	1 bolt
 3443-38*	1 1/2 yds	1.37m	1 bolt	2 bolts
 3443-77	2 1/8 yds	1.94m	1 bolt	2 bolts
 3448P-38	2/3 yds	0.61m	1 bolt	1 bolt
Backing Fabric Option				
3440-35	5 1/3 yds	4.88m	3 bolts	5 bolts
<p>* Indicates binding fabric. FQ = 18" x 22" (0.45m x 0.55m) All fabric quantities are based on 15yd bolts unless otherwise indicated.</p>				



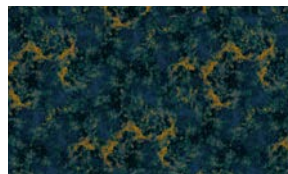
3442-77
Scrolls
Indigo



3443-35
Texture
Rust



3443-38*
Texture
Ochre



3443-77
Texture
Indigo



3448P-38
Crow And Books Panel
Ochre Multi