


A Bird in Hand (wall quilt & bench pillow)

 Henry Glass & Co., Inc.



Finished Size of Project: **59 ½" x 71" (1.51m x 1.80m)** *wall quilt*

Finished Size of Project: **36" x 14" (0.91m x 0.36m)** *bench pillow*

Fabric Collection Name and Designer: **Crow-Mazing by Jan Mott of Crane Design**

Technique: **Pieced**

Project Designed by: **Jan Mott of Crane Design**

Skill Level: **Advanced Beginner**

A Bird in Hand (wall quilt & bench pillow)



Henry Glass & Co., Inc.

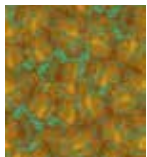
Wall Quilt Fabric Requirements

DESIGN	COLOR	ITEM ID	YARDAGE
(A) Crow Portrait Panel	Ochre Multi	3447P-38	1 panel (0.91m)
(B) Texture	Ochre	3443-38	1 $\frac{3}{8}$ yards (1.26m)
(C) Texture	Rust	3443-35	$\frac{3}{4}$ yard (0.69m)
(D) Scrolls	Indigo	3442-77	1 $\frac{1}{4}$ yards (1.14m)*
(E) Crow Blocks	Ochre Multi	3446-38	$\frac{2}{3}$ yard (0.61m)

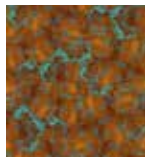
* includes binding



(A)



(B)



(C)



(D)

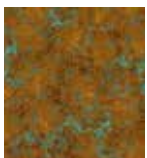


(E)

Backing *(Purchased Separately)*

44" (1.12m) wide

Scrolls	Rust	3442-35	4 yards (3.66m)
---------	------	---------	-----------------



Backing
44"

Additional Materials:

- Batting 68" x 79" (1.73m x 2.01m)
- Thread and sewing supplies

All possible care has been taken to ensure the accuracy of this pattern. We are not responsible for printing errors or the manner in which individual work varies.

Please read the instructions carefully before starting this project. If kitting it is recommended a sample is made to confirm accuracy.

All free projects are intended to remain free and are not for resale.

Wall Quilt Cutting Instructions

Notes:

- Please make sure to check henryglassfabrics.net for pattern updates prior to starting the project.
- All strips are cut across the width of fabric (WOF) from selvage to selvage edge unless otherwise noted.

Fabric A, fussy cut:

- (1) 32½" x 42½" rectangle, centered on the panel

Fabric B, cut:

- (4) 4" x WOF strips. Sew the strips together end to end with diagonal seams and cut (2) 4" x 64½" strips
- (3) 4" x WOF strips. Sew the strips together end to end with diagonal seams and cut (2) 4" x 60" strips
- (2) 3" x 36" WOF strips
- (2) 2¼" x 42½" WOF strips, piece as needed

Fabric C, cut:

- (5) 5" x WOF strips; subcut (14) 5" x 12" strips

Fabric D, cut:

- (5) 5" x WOF strips; subcut (14) 5" x 12" strips
- (7) 2½" x WOF strips for the binding

Fabric E, fussy cut:

- (4) 9½" squares, each centered on a block

Backing, cut:

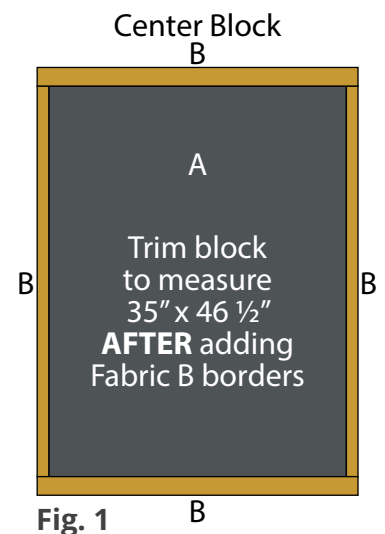
- (2) 68" x WOF strips for the backing. Sew the strips together and trim to make the 68" x 79" back

Wall Quilt Sewing

- Sew using a ¼" seam allowance with right sides together (RST) unless otherwise indicated. Press seams towards the darker fabric, unless otherwise indicated.
- The arrows in the figures represent the fabric print direction. Pay attention to the fabric and unit orientations when assembling the various components.

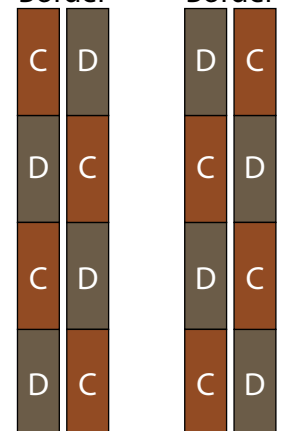
Wall Quilt Block Assembly

- Sew (1) 2¼" x 42½" Fabric B strip to each side of the 32½" x 42½" Fabric A rectangle. Sew (1) 3" x 36" Fabric B strip to the top and bottom of the Fabric A rectangle to make the Center Block (Fig. 1). **Trim the block to measure 35" x 46½".**



- Sew together (2) 5" x 12" Fabric C strips and (2) 5" x 12" Fabric D strips, end to end and alternating them from top to bottom, to make the left column. Repeat to make the right column. Sew together the (2) columns lengthwise to make the Left Side Border (Fig. 2).

Left Side Border Right Side Border



- Repeat Step 2 and refer to Figure 3 for fabric identification, placement and orientation to make the Right Side Border.

4. Sew (1) 5" x 12" Fabric C strip to each end of (1) 5" x 12" Fabric D strip. Sew (1) 5" x 12" Fabric D strip to each end of (1) 5" x 12" Fabric C strip. Sew together the (2) strips lengthwise. Sew (1) 9½" Fabric E square to each end of the newly sewn strip to make the Top Border (Fig. 4).

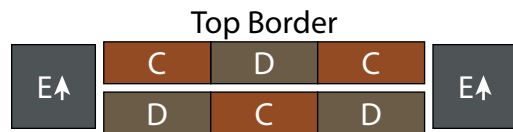


Fig. 4

5. Repeat Step 4 and refer to Figure 5 for component identification, placement and orientation to make the Bottom Border.

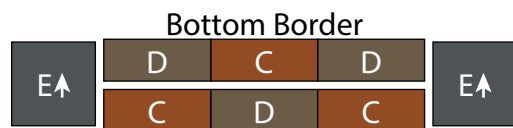


Fig. 5

Wall Quilt Top Assembly

Follow the Wall Quilt Layout (Page 8) while assembling the wall quilt top.

6. Sew the Left Side Border and Right Side Border to the left and right sides of the Center Block.

7. Sew the Top Border and the Bottom Border to the top and to the bottom of the Center Block.

8. Sew (1) 4" x 64½" Fabric B strip to each side of the Center Block.

9. Sew (1) 4" x 60" Fabric B strip to the top and to the bottom of the Center Block to make the quilt top.

Wall Quilt Layering, Quilting and Finishing

10. Press the quilt top and 68" x 79" backing well. Layer backing (wrong side up), batting, pressed quilt top (right side up) and baste. Quilt as desired and trim excess batting and backing when quilting is complete.

Wall Quilt Binding

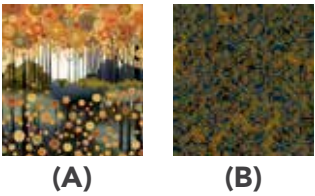
11. Cut the ends of the (7) Fabric D binding strips at a 45-degree angle and sew end to end to make (1) continuous piece of binding. Fold in half lengthwise and press wrong sides together.

12. Sew the binding to the front of the quilt, raw edges together. Turn the folded edge to the back, and hand stitch in place.

Bench Pillow Fabric Requirements

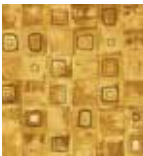
DESIGN	COLOR	ITEM ID	YARDAGE
(A) Border Trees	Ochre Rust Multi	3445-38	1 yard (0.91m)
(B) Scrolls	Indigo	3442-77	1/8 yard (0.11m)*

* Note: If bench pillow is being made in combination with the wall quilt, there will be enough Scrolls - Indigo fabric left over from the wall quilt to complete the bench pillow.



Backing (Purchased Separately)

44" (1.12m) wide			
Squares Patch	Gold	3444-33	1/2 yard (0.46m)



Backing
44"

Additional Materials:

- Poly-fil
- Thread and sewing supplies

Bench Pillow Cutting Instructions

Notes:

- Please make sure to check henryglassfabrics.net for pattern updates prior to starting the project.
- All strips are cut across the width of fabric (WOF) from selvage to selvage edge unless otherwise noted.
- *Strips cut Length of Fabric (LOF).

Fabric A, cut:

(1) 9½" x 31½" LOF strip*

Fussy cut (2) 2" x 31½" LOF* strips and

(2) 2" x 9½" LOF* strips from the upper section of the stripe

Fussy cut (2) 9½" x 1½" LOF* strips and

(2) 1½" x 31½" LOF* strips from the lower section of the stripe

Fabric B, cut:

(1) 3" x WOF strip; subcut

(4) 3" squares

Backing, cut:

(1) 14½" x 36½" WOF strip

Bench Pillow Sewing

- Sew using a $\frac{1}{4}$ " seam allowance with right sides together (RST) unless otherwise indicated. Press seams towards the darker fabric, unless otherwise indicated.
- The arrows in the figures represent the fabric print direction. Pay attention to the fabric and unit orientations when assembling the various components.

Bench Pillow Assembly

1. Sew (1) 2" x 9½" Fabric A strip to the left side of (1) 1½" x 9½" Fabric A strip lengthwise to make the Pillow Left Side Border (Fig. 6).

2. Sew (1) 1½" x 9½" Fabric A strip to the left side of (1) 2" x 9½" Fabric A strip lengthwise to make the Pillow Right Side Border (Fig. 7).

Pillow
Left Side
Border



Fig. 6

Pillow
Right Side
Border



Fig. 7

3. Sew (1) 2" x 31½" Fabric B strip to the top of (1) 1½" x 31½" Fabric C strip lengthwise. Sew (1) 3" Fabric B square to each end of the newly sewn strip to make the Pillow Top Border (Fig. 8).

Pillow Top Border

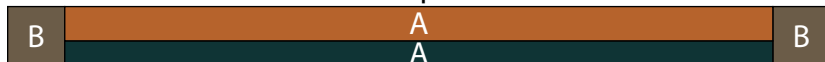


Fig. 8

4. Sew (1) 1½" x 31½" Fabric C strip to the top of (1) 2" x 31½" Fabric B strip lengthwise. Sew (1) 3" Fabric B square to each end of the newly sewn strip to make the Pillow Bottom Border (Fig. 9).

Pillow Bottom Border



Fig. 9

Bench Pillow Top Assembly

Follow the Bench Pillow Layout (Page 8) while assembling the pillow top.

5. Sew the Pillow Left Side Border and the Pillow Right Side Border to the left and right sides of (1) 9½" x 31½" Fabric A strip (Pillow Layout).

6. Sew the Pillow Top Border and the Pillow Bottom Border to the top and to the bottom of the Fabric A strip to make the Pillow Top.

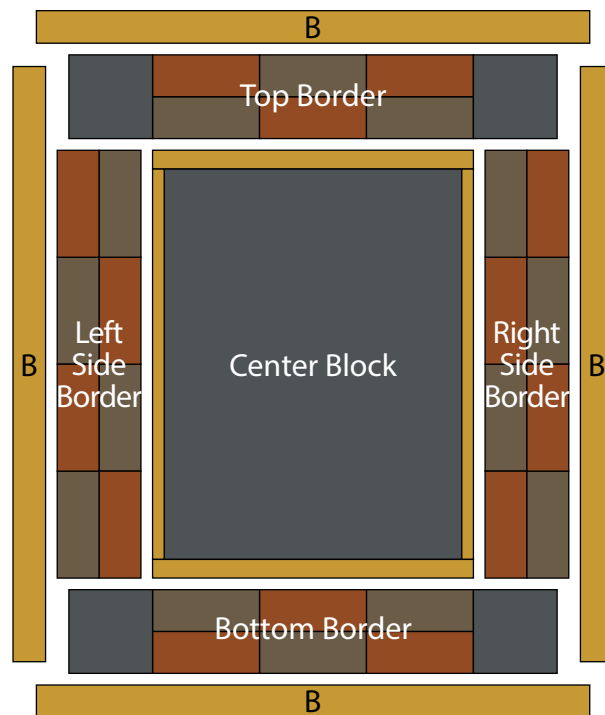
Bench Pillow Layering, Quilting and Finishing

7. Place the 14½" x 36½" Pillow Back on top of the Pillow Top right sides together. Sew the (2) pieces together around the perimeter leaving a 4" to 6" opening for turning.

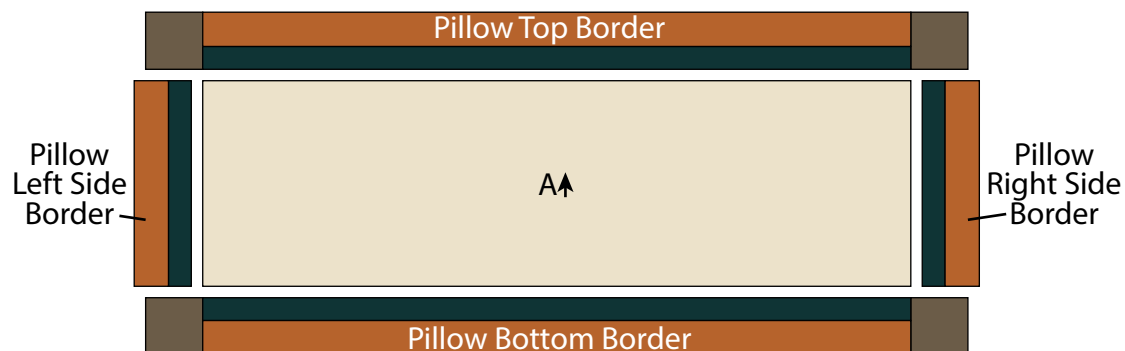
8. Turn the pillow right side out and fill with poly-fil.

9. Hand stitch the opening closed to finish the pillow.

Wall Quilt Layout



Pillow Layout



All possible care has been taken to ensure the accuracy of this pattern. We are not responsible for printing errors or the manner in which individual work varies.
Please read the instructions carefully before starting this project. If kitting it is recommended a sample is made to confirm accuracy.

All free projects are intended to remain free and are not for resale.