



Finished Size of Project: **58" x 76" (147.32cm x 193.04cm)**

Fabric Collection Name and Designer: **Catsup by City Art Studio**

Technique: **Pieced**

Project Designed by: **Matthew Pridemore of The Whimsical Workshop**

Skill Level: **Advanced Beginner**

Fabric Requirements

DESIGN	COLOR	ITEM ID	YARDAGE
(A) Packed Flowers	Green/Multi	1927-62	$\frac{3}{4}$ yard (0.69m)
(B) All Cats	Gray/Multi	1928-19	1½ yards (1.37m)
(C) Paw Prints	Black/Multi	1930-96	1 yard (0.91m)
(D) Cat Hair	Black/Gray	1932-19	$\frac{5}{8}$ yard (0.57m)*
(E) Border Stripe	Green/Multi	1933-69	2 yards (1.83m)
(F) Pillow Panel	Green/Multi	1934P-69	$\frac{2}{3}$ yard (0.61m)

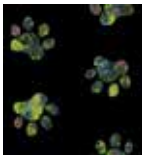
* includes binding



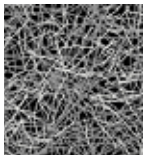
(A)



(B)



(C)



(D)



(E)



(F)

Backing (Purchased Separately)

44" (1.12m) wide			
Cheater's Quilt	Green/Gray	1929-61	3¾ yards (3.43m)



Backing
44"

Additional Materials:

- Batting 66" x 84" (167.64cm x 213.36cm)
- Thread and sewing supplies

Cutting Instructions

Notes:

- Please make sure to check henryglassfabrics.net for pattern updates prior to starting the project.
- All strips are cut across the width of fabric (WOF) from selvage to selvage edge unless otherwise noted.
- *Strips cut Length of Fabric (LOF).

Fabric A, cut:

- (1) 6" x WOF strip; subcut
 - (4) 6" squares
- (2) 3½" x 41½" WOF strips
- (2) 3½" x 29½" WOF strips
- (1) 3½" x 23½" WOF strip

Fabric B, cut:

- (2) 6½" x 47½" LOF strips*
- From the remaining fabric cut;
- (2) 6½" x 41½" WOF strips, piece as needed

Fabric C, cut:

- (3) 3½" x WOF strips. Sew the strips together end-to-end with diagonal seams and cut
 - (2) 3½" x 59½" strips
- (3) 3½" x WOF strips. Sew the strips together end-to-end with diagonal seams and cut
 - (2) 3½" x 47½" strips
- (4) 2½" x WOF strips; subcut
 - (1) 2½" x 24" strip and (1) 2½" x 16½" strip from each strip

Fabric D, cut:

- (7) 2½" x WOF strips for the binding

Fabric E, fussy cut:

- (2) 6" x 65½" LOF strips centered on stripes*
- (2) 6" x 47½" LOF strips centered on stripes*

Fabric F, fussy cut:

- (2) 20½" x 16½" rectangles centered on the panels

Backing, cut:

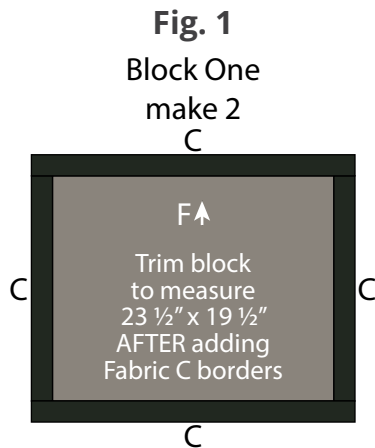
- (2) 66" x WOF strips for the backing. Sew the strips together and trim to make the 66" x 84" back

Sewing

- Sew using a $\frac{1}{4}$ " seam allowance with right sides together (RST) unless otherwise indicated. Press seams towards the darker fabric, unless otherwise indicated.
- The arrows in the figures represent the fabric print direction. Pay attention to the fabric and unit orientations when assembling the various components.

Block Assembly

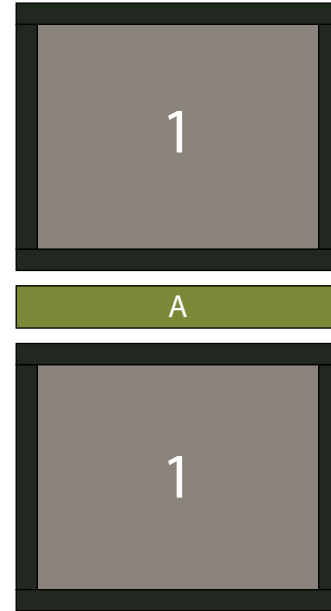
1. Sew (1) **Fabric C** $2\frac{1}{2}$ " x $16\frac{1}{2}$ " strip to each side of (1) **Fabric F** $20\frac{1}{2}$ " x $16\frac{1}{2}$ " rectangle. Sew (1) **Fabric C** $2\frac{1}{2}$ " x $24\frac{1}{2}$ " strip to the top and bottom of the **Fabric F** rectangle to make (1) Block One rectangle (**Fig. 1**). **Trim the block to measure $23\frac{1}{2}$ " x $19\frac{1}{2}$ "**. Repeat to make a second Block One rectangle.



2. Sew (1) Block One rectangle to the top and bottom of (1) **Fabric A** $3\frac{1}{2}$ " x $23\frac{1}{2}$ " strip to make the $23\frac{1}{2}$ " x $41\frac{1}{2}$ " Center Block (**Fig. 2**).

Fig. 2

Center Block



Quilt Top Assembly

Follow the Quilt Layout (Page 6) while assembling the quilt top.

3. Sew (1) **Fabric A** $3\frac{1}{2}$ " x $41\frac{1}{2}$ " strip to each side of the Center Block. Sew (1) **Fabric A** $3\frac{1}{2}$ " x $29\frac{1}{2}$ " strip to the top and bottom of the Center Block.
4. Sew (1) **Fabric B** $6\frac{1}{2}$ " x $47\frac{1}{2}$ " strip to each side of the Center Block. Sew (1) **Fabric B** $6\frac{1}{2}$ " x $41\frac{1}{2}$ " strip to the top and bottom of the Center Block.
5. Sew (1) **Fabric C** $3\frac{1}{2}$ " x $59\frac{1}{2}$ " strip to each side of the Center Block. Sew (1) **Fabric C** $3\frac{1}{2}$ " x $47\frac{1}{2}$ " strip to the top and bottom of the Center Block.
6. Sew (1) **Fabric E** 6 " x $65\frac{1}{2}$ " strip to each side of the Center Block.

7. Sew (1) **Fabric A** 6" square to each end of (1) **Fabric E** 6" x 47½" strip. Repeat to make a second strip. Sew (1) newly sewn strip to the top and bottom of the Center Block to make the quilt top which should measure 58½" x 76½".

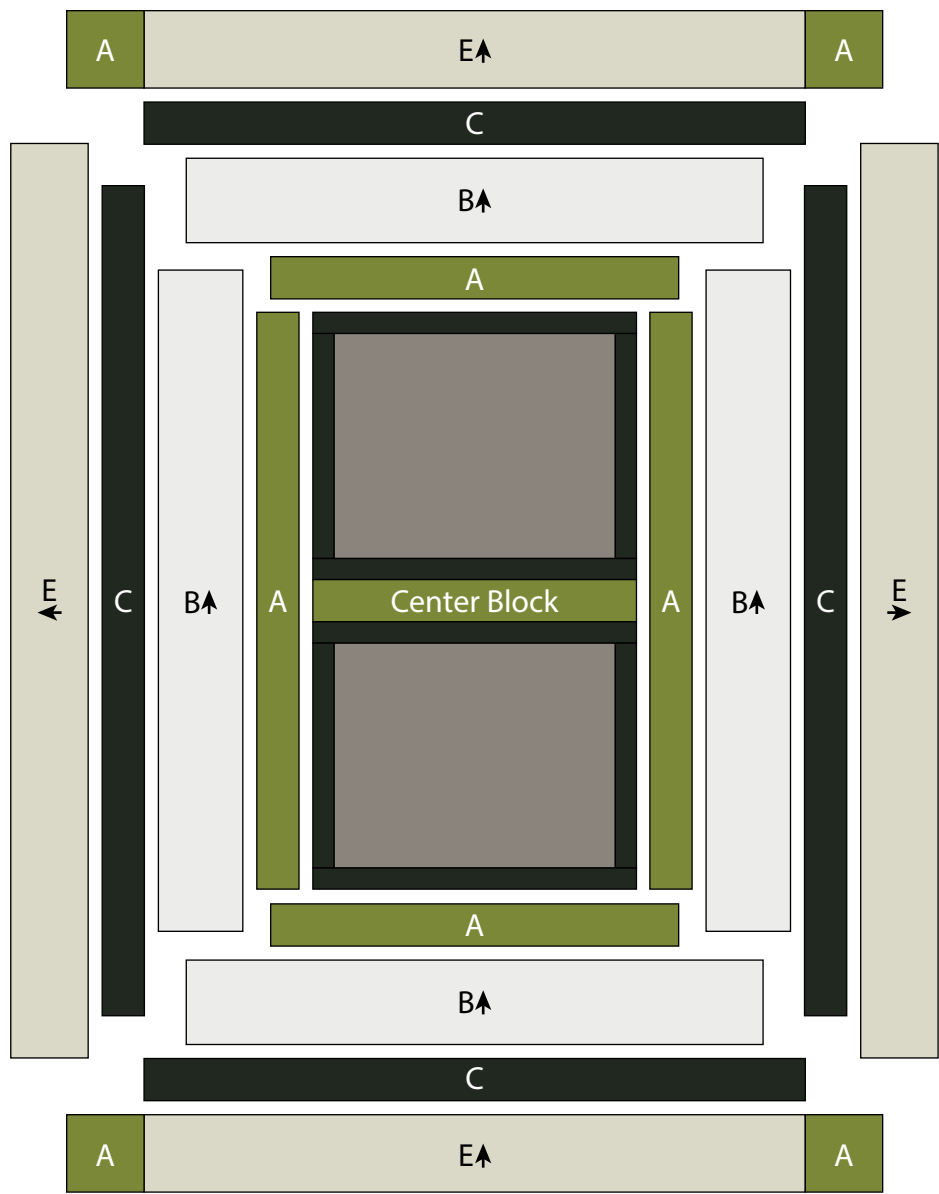
Layering, Quilting and Finishing

8. Create a quilt sandwich with the batting between the quilt top and the backing. Pin or baste layers together, mark the quilting design, and quilt by hand or machine. When quilting is complete, remove pins or basting and trim batting and backing even with raw edges of the quilt top.

Binding

9. Sew (7) **Fabric D** 2½" x WOF strips together, end-to-end with 45-degree diagonal seams, to make the binding. Fold this long strip in half lengthwise with wrong sides together and press.
10. Sew binding to the edges of the quilt top, mitering corners, and overlapping ends. Fold binding to the back of the quilt and stitch it in place by hand to finish.

Quilt Layout



*All possible care has been taken to ensure the accuracy of this pattern. We are not responsible for printing errors or the manner in which individual work varies.
Please read the instructions carefully before starting this project. If kitting it is recommended a sample is made to confirm accuracy.
All free projects are intended to remain free and are not for resale.*