

Winter Wheat

by Kim Diehl



Finished Quilt Size: 61½" x 61½"



Henry Glass & Co. Inc.



49 West 37th Street, New York, NY, 10018

tel: 212-686-5194 • fax: 212-532-3525

Toll-free: 800-294-9495

www.henryglassfabrics.net

facebook

Winter Wheat

Finished Quilt Size: 61½" x 61½"

MATERIALS

This quilt features prints from Kim Diehl's Buttercream & Brickle Bits collection for Henry Glass Fabrics, with scraps of assorted prints used for the accent portions of the blocks, sashing strips, and binding. Kim chose these accent prints from her Scrap Basket Favorites collection, but any prints of your choosing will work nicely.

Yardages are based on a 42" width of useable fabric after prewashing and removing selvages. Fat quarters measure 18" x 21".



1938-40
fat quarter

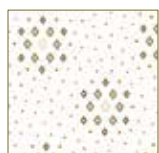
1939-40
fat quarter

1940-40
fat quarter

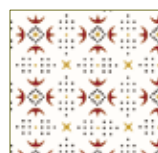
1941-40
fat quarter



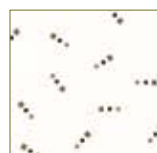
1942-40
fat quarter



1943-40
fat quarter



1944-40
fat quarter



1945-40
fat quarter



1946-40
fat quarter



1947-40
fat quarter



1948-40
fat quarter



1949-40
fat quarter



1950-40
fat quarter



1951-40
fat quarter



1952-40
fat quarter



1953-40
fat quarter



1954-40
fat quarter



1955-40
fat quarter

Additional materials:

- Scraps of assorted prints for blocks and sashing strips, equivalent to approximately 1½–1½ yards
- ⅝ yard of complementary print for binding
- 4 yards of fabric of choice for backing (Kim suggests the cream stars and sprigs print, 1955-40)
- 68" x 68" square of batting
- Standard sewing and quilting supplies

CUTTING

For this particular project, to make the best use of your yardages, Kim suggests cutting the specified longer patchwork pieces from the assorted wheat strips first, saving all 1½"-wide scraps that remain, and using them as needed to cut the shorter patchwork pieces last. For added choices as you stitch the block rows, you may wish to cut an extra handful of wheat-print pieces in each given size as your scraps permit.

Cut all pieces across the width of the fabric in the order given unless directed differently. WOF is defined as width of fabric.

From the 18 fat quarters of assorted wheat prints, cut a combined total of:

50 rectangles, 1½" x 11½"

100 rectangles, 1½" x 9½"

100 rectangles, 1½" x 7½"

100 rectangles, 1½" x 5½"

50 rectangles, 1½" x 3½"

36 sashing squares, 1½" x 1½"

Keep the pieces organized by size.

From the scraps of assorted prints, cut a combined total of:

25 block center squares, 3½" x 3½"

60 sashing rectangles, 1½" x 11½"

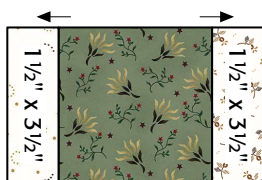
From the complementary print chosen for the binding, cut:

7 strips, 2½" x WOF; remove the selvages.

PIECING the COURTHOUSE STEPS BLOCKS

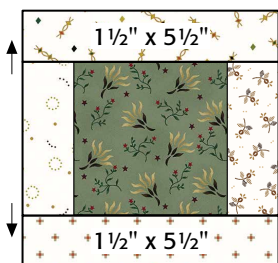
Sew all pieces with right sides together using a 1/4" seam allowance unless otherwise noted. Press the seam allowances as shown by the arrows or otherwise instructed.

- 1 Choose the assorted wheat 1 1/2"-wide rectangles cut for the blocks and the 25 assorted-print 3 1/2" squares.
- 2 Choosing the wheat prints randomly, join a 1 1/2" x 3 1/2" rectangle to the right and left sides of an assorted-print 3 1/2" square. Press. The center unit of the block should measure 3 1/2" x 5 1/2", including the seam allowances.



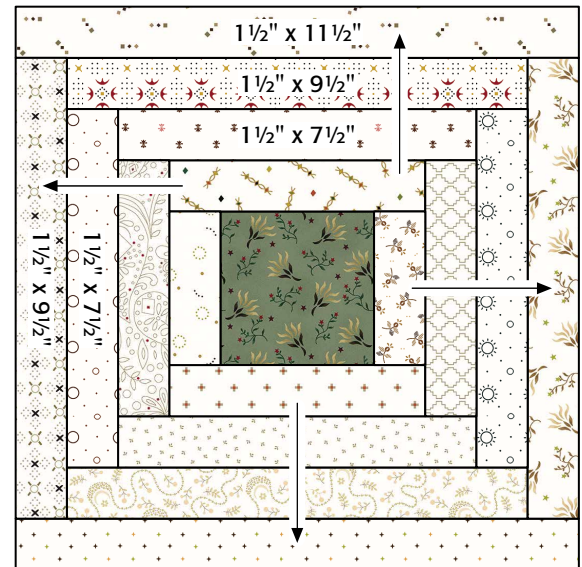
Block center unit,
3 1/2" x 5 1/2"

- 3 Continuing as instructed in Step 2, join a wheat 1 1/2" x 5 1/2" rectangle to the remaining opposite sides of the center assorted-print square. Press. The center unit with round 1 completed should measure 5 1/2" square, including the seam allowances.



Center unit
with round 1 completed,
5 1/2" x 5 1/2"

- 4 Continue adding pairs of wheat rectangles to opposite sides of the center unit, with the last two rectangles measuring 1 1/2" in length. Press the patchwork as shown after each rectangle pair is added. The pieced Courthouse Steps block with all rounds completed should measure 11 1/2" square, including the seam allowances.

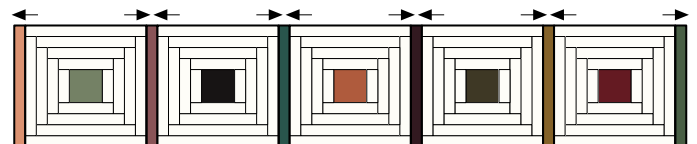


Courthouse Steps block,
11 1/2" x 11 1/2"

- 5 Repeat steps 2 through 4 to piece a total of 25 Courthouse Steps blocks.

PIECING the BLOCK ROWS

Lay out five Courthouse Steps blocks and six assorted-print sashing rectangles, 1 1/2" x 11 1/2", in alternating positions. Join the pieces. Press. Repeat to piece a total of five block rows measuring 11 1/2" x 61 1/2", including the seam allowances.



Make 5 block rows,
11 1/2" x 61 1/2"

PIECING the SASHING ROWS

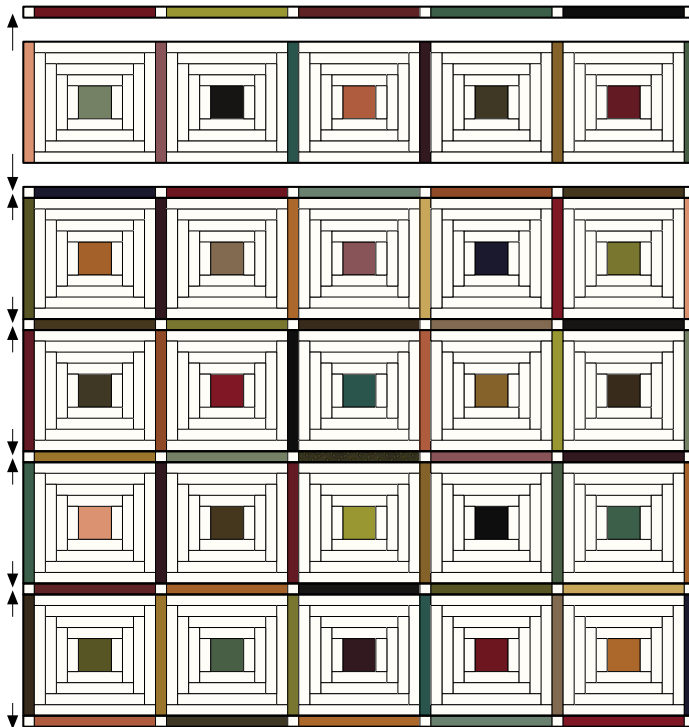
Lay out five assorted-print sashing rectangles, $1\frac{1}{2}'' \times 11\frac{1}{2}''$, and six assorted wheat-print $1\frac{1}{2}''$ squares in alternating positions. Join the pieces. Press. Repeat to piece a total of six sashing rows measuring $1\frac{1}{2}'' \times 61\frac{1}{2}''$, including the seam allowances.



Make 6 sashing rows,
 $1\frac{1}{2}'' \times 61\frac{1}{2}''$.

PIECING the QUILT TOP

Referring to the assembly diagram, lay out the pieced sashing rows and block rows in alternating positions. Join the rows. Press. The pieced and completed quilt top should measure $61\frac{1}{2}''$ square, including the seam allowances.



Assembly diagram

COMPLETING the QUILT

Layer the quilt top, batting, and backing. Quilt the layers. Join the complementary-print binding strips to make one length and use it to bind the quilt.

Every effort has been made to ensure that all projects are error free. All the information is presented in good faith, however no warranty can be given nor results guaranteed as we have no control over the execution of instructions. Therefore, we assume no responsibility for the use of this information or damages that may occur as a result. When errors are brought to our attention, we make every effort to correct and post a revision as soon as possible. Please make sure to check www.henryglassfabrics.com for pattern updates prior to starting the project. We also recommend that you test the project prior to cutting for kits. Finally, all free projects are intended to remain free to you and are not for resale or other forms of distribution.



©2025 Kim Diehl