

Christmas Presence

by Kim Diehl



Finished Quilt Size: 57½" x 60½"



Henry Glass & Co., Inc.



49 West 37th Street, New York, NY 10018

tel: 212-686-5194 • fax: 212-532-3525

Toll-free: 800-294-9495

www.henryglassfabrics.net

facebook

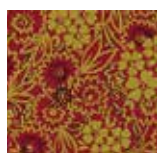
Christmas Presence

Finished Quilt Size: 57½" x 60½"

MATERIALS

This quilt features prints from Kim Diehl's Baubles & Balsam collection for Henry Glass Fabrics.

Yardages are based on a 42" width of useable fabric after prewashing and removing selvages. Fat quarters measure 18" x 21".



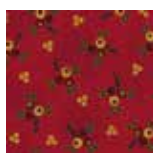
979-88
fat quarter



980-88
fat quarter



981-88
fat quarter



982-88
⅝ yard



983-88
fat quarter



984-88
fat quarter



985-88
fat quarter



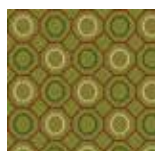
986-88
fat quarter



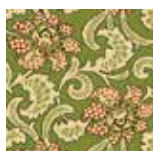
987-66
fat quarter



988-66
½ yard



989-66
fat quarter



990-66
fat quarter



991-66
fat quarter



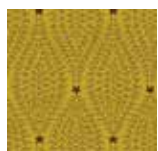
992-66
fat quarter



993-66
fat quarter



994-66
fat quarter



995-44
fat quarter



996-40
2½ yards

Additional materials:

- 4 yards of fabric for backing (Kim suggests the evergreen holiday foulard print 990-66)
- 61" x 64" piece of batting
- Standard sewing and quilting supplies

CUTTING

Cut all pieces across the width of the fabric in the order given unless directed differently. WOF is defined as width of fabric.

For greater ease, cutting directions are provided individually for the binding, blocks, and top and bottom sections of the quilt. Be frugal in your cutting – as you complete each portion, keep the unused scraps and remainder of the prints for the next set to be cut.

Please don't let the number of patchwork pieces needed for the gift blocks intimidate you – once cut, the blocks are easy to piece and will come together in a snap!

As you complete the cutting for each section, label and organize the pieces into a patchwork set.

BINDING

From red 982-88, cut:

6 strips, 2½" x WOF; trim away the selvage edges.

TOP STARS UNIT

From the cream print, cut:

9 rectangles, 1½" x 2½"

12 squares, 1½" x 1½"

6 rectangles, 4½" x 8½"

From the gold print, cut:

24 squares, 1½" x 1½"

3 squares, 2½" x 2½"

Choosing from all of the red and green prints as you wish, cut a total of:

2 green rectangles, 1½" x 2½"

1 red rectangle, 1½" x 2½"

BOTTOM GIFT BOX UNIT

For the Gift Box #1 block, cut:

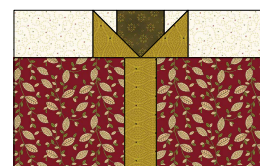
2 cream rectangles, 2" x 3½"

2 cream rectangles, 3½" x 5½"

2 gold squares, 3½" x 3½"

1 gold rectangle, 2½" x 7½"

2 red 980-88 squares, 7½" x 7½"

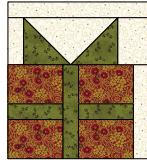


For the Gift Box #2 block, cut:

1 cream rectangle, $1\frac{1}{2}$ " x $9\frac{1}{2}$ "
 1 cream rectangle, $2\frac{1}{2}$ " x $4\frac{1}{2}$ "
 1 cream rectangle, $2\frac{1}{2}$ " x $3\frac{1}{2}$ "
 1 cream square, $2\frac{1}{2}$ " x $2\frac{1}{2}$ "
 1 cream rectangle, $1\frac{1}{2}$ " x $7\frac{1}{2}$ "
 2 red 983-88 squares, $2\frac{1}{2}$ " x $2\frac{1}{2}$ "
 2 red 983-88 rectangles, $1\frac{1}{2}$ " x 4"
 1 red 983-88 rectangle, $1\frac{1}{2}$ " x $7\frac{1}{2}$ "
 4 green 990-66 rectangles, $3\frac{1}{2}$ " x 4"

**For the Gift Box #3 block, cut:**

1 cream rectangle, $1\frac{1}{2}$ " x $9\frac{1}{2}$ "
 1 cream rectangle, $3\frac{1}{2}$ " x $6\frac{1}{2}$ "
 1 cream rectangle, $1\frac{1}{2}$ " x $3\frac{1}{2}$ "
 1 cream rectangle, $2\frac{1}{2}$ " x $3\frac{1}{2}$ "
 1 cream rectangle, $1\frac{1}{2}$ " x $6\frac{1}{2}$ "
 2 green 992-66 squares, $3\frac{1}{2}$ " x $3\frac{1}{2}$ "
 2 green 992-66 rectangles, $1\frac{1}{2}$ " x 4"
 1 green 992-66 rectangle, $1\frac{1}{2}$ " x $6\frac{1}{2}$ "
 4 red 979-88 rectangles, 3" x 4"

**For the Gift Box #4 block, cut:**

2 cream rectangles, 2" x $3\frac{1}{2}$ "
 2 cream rectangles, $3\frac{1}{2}$ " x $5\frac{1}{2}$ "
 2 gold squares, $3\frac{1}{2}$ " x $3\frac{1}{2}$ "
 1 gold rectangle, $2\frac{1}{2}$ " x $7\frac{1}{2}$ "
 2 red 986-88 squares, $7\frac{1}{2}$ " x $7\frac{1}{2}$ "

**For the cream setting strips in the gift box unit, cut:**

4 cream, $2\frac{1}{2}$ " x $10\frac{1}{2}$ " rectangles

For the green tree trunk of the center red Log Cabin tree, cut:

1 green 993-66 rectangle, $2\frac{1}{2}$ " x $10\frac{1}{2}$ "

For the bottom gift box base unit, from green 988-66, cut:

2 strips, $3\frac{1}{2}$ " x WOF; remove the selvages. From each of the 2 green trimmed strips, cut 1 square, $3\frac{1}{2}$ " x $3\frac{1}{2}$ " (total of 2); add 1 of these green squares to the Gift Box block #1 patchwork set, and the other square to the Gift Box block #4 patchwork set.

LOG CABIN BLOCKS**For the cream logs in both the green and red Log Cabin blocks, cut a total of:**

24 cream rectangles, $1\frac{1}{2}$ " x $2\frac{1}{2}$ "
 24 cream rectangles, $1\frac{1}{2}$ " x $3\frac{1}{2}$ "
 24 cream rectangles, $1\frac{1}{2}$ " x $4\frac{1}{2}$ "
 24 cream rectangles, $1\frac{1}{2}$ " x $5\frac{1}{2}$ "
 24 cream rectangles, $1\frac{1}{2}$ " x $6\frac{1}{2}$ "
 24 cream rectangles, $1\frac{1}{2}$ " x $7\frac{1}{2}$ "

24 cream rectangles, $1\frac{1}{2}$ " x $8\frac{1}{2}$ "

24 cream rectangles, $1\frac{1}{2}$ " x $9\frac{1}{2}$ "

Keep the cream rectangles organized by size.

For the Four-Patch units in both the green and red Log Cabin blocks, cut a total of:

24 cream squares, $1\frac{1}{2}$ " x $1\frac{1}{2}$ "

48 gold squares, $1\frac{1}{2}$ " x $1\frac{1}{2}$ "

16 assorted red squares, $1\frac{1}{2}$ " x $1\frac{1}{2}$ ", choosing the prints randomly

8 assorted green squares, $1\frac{1}{2}$ " x $1\frac{1}{2}$ ", choosing the prints randomly

For the 16 Green Log Cabin blocks, use all green prints randomly (as your fabrics permit) to cut a total of:

16 assorted green rectangles, $1\frac{1}{2}$ " x $3\frac{1}{2}$ "

16 assorted green rectangles, $1\frac{1}{2}$ " x $4\frac{1}{2}$ "

16 assorted green rectangles, $1\frac{1}{2}$ " x $5\frac{1}{2}$ "

16 assorted green rectangles, $1\frac{1}{2}$ " x $6\frac{1}{2}$ "

16 assorted green rectangles, $1\frac{1}{2}$ " x $7\frac{1}{2}$ "

16 assorted green rectangles, $1\frac{1}{2}$ " x $8\frac{1}{2}$ "

16 assorted green rectangles, $1\frac{1}{2}$ " x $9\frac{1}{2}$ "

16 assorted green rectangles, $1\frac{1}{2}$ " x $10\frac{1}{2}$ "

For the 8 Red Log Cabin blocks, use all red prints randomly (as your fabrics permit) to cut a total of:

8 assorted red rectangles, $1\frac{1}{2}$ " x $3\frac{1}{2}$ "

8 assorted red rectangles, $1\frac{1}{2}$ " x $4\frac{1}{2}$ "

8 assorted red rectangles, $1\frac{1}{2}$ " x $5\frac{1}{2}$ "

8 assorted red rectangles, $1\frac{1}{2}$ " x $6\frac{1}{2}$ "

8 assorted red rectangles, $1\frac{1}{2}$ " x $7\frac{1}{2}$ "

8 assorted red rectangles, $1\frac{1}{2}$ " x $8\frac{1}{2}$ "

8 assorted red rectangles, $1\frac{1}{2}$ " x $9\frac{1}{2}$ "

8 assorted red rectangles, $1\frac{1}{2}$ " x $10\frac{1}{2}$ "

PIECING the TOP STAR UNIT

Sew all pieces with right sides together using a $\frac{1}{4}$ " seam allowance unless otherwise noted. Press the seam allowances as shown by the arrows or otherwise instructed.

- 1 Choose the Top Star Unit patchwork set. Use a pencil and an acrylic ruler to draw a diagonal sewing line from corner to corner on the wrong side of the 24 gold $1\frac{1}{2}$ " squares.
- 2 Layer a prepared gold square onto one end of a cream $1\frac{1}{2}$ " x $2\frac{1}{2}$ " rectangle. Sew the pair along the drawn diagonal line. Fold the resulting inner gold triangle open, aligning the corner with the corner of the rectangle. Press. Trim away the layers beneath the top gold triangle, leaving a $\frac{1}{4}$ " seam allowance. In the same manner, add a mirror-image

star point to the remaining end of the rectangle. Repeat to piece a total of nine cream star-point units measuring $1\frac{1}{2}" \times 2\frac{1}{2}"$, including the seam allowances. Reserve the remaining prepared gold $1\frac{1}{2}"$ squares for the next step.



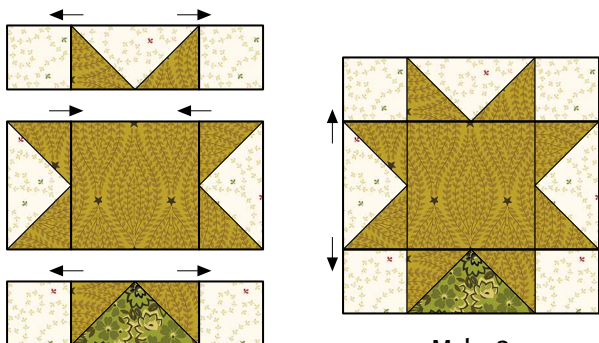
Make 9 cream star-point units, $1\frac{1}{2}" \times 2\frac{1}{2}"$.

- 3 Using the reserved prepared gold $1\frac{1}{2}"$ squares, the two green $1\frac{1}{2}" \times 2\frac{1}{2}"$ rectangles, and the red $1\frac{1}{2}" \times 2\frac{1}{2}"$ rectangle, repeat step 2 to piece two green star-point units and one red star-point unit.



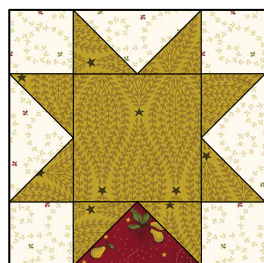
Make 2. Make 1.

- 4 Lay out three cream star-point units from step 2, one green star-point unit from step 3, one gold $2\frac{1}{2}"$ square, and four cream $1\frac{1}{2}"$ squares in three horizontal rows as shown. Join the pieces in each row. Press. Join the rows. Press. Repeat to piece a total of two Gold and Green Star blocks measuring $4\frac{1}{2}"$ square, including the seam allowances.



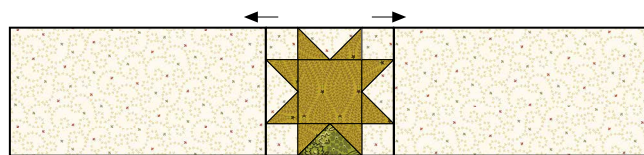
Make 2 Gold and Green Star blocks, $4\frac{1}{2}" \times 4\frac{1}{2}"$.

- 5 Repeat step 4 to piece one Gold and Red Star block.



Make 1 Gold and Red Star block, $4\frac{1}{2}" \times 4\frac{1}{2}"$.

- 6 Join a cream $4\frac{1}{2}" \times 8\frac{1}{2}"$ rectangle to two opposite sides of a step 4 Gold and Green Star block as shown. Press. Repeat using the remaining two Star blocks to piece a total of three long star units measuring $4\frac{1}{2}" \times 20\frac{1}{2}"$, including the seam allowances.



Make 2 gold-and-green and 1 gold-and-red long star units, $4\frac{1}{2}" \times 20\frac{1}{2}"$.

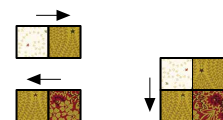
- 7 Referring to the illustration, join the three long star units together end to end to complete the top star unit. The completed unit should measure $4\frac{1}{2}" \times 60\frac{1}{2}"$, including the seam allowances.



Top star unit, $4\frac{1}{2}" \times 60\frac{1}{2}"$.

PIECING the FOUR-PATCH UNITS

- 1 Choose the four-patch patchwork set.
- 2 Lay out one cream $1\frac{1}{2}"$ square, two gold $1\frac{1}{2}"$ squares, and one red $1\frac{1}{2}"$ square in two horizontal rows as shown. Join the squares in each row. Press. Join the rows. Press. Repeat to piece a total of 16 gold and red four-patch units measuring $2\frac{1}{2}"$ square, including the seam allowances.
- 3 Using the remaining four-patch patchwork set pieces, repeat step 2 to piece eight gold and green four-patch units measuring $2\frac{1}{2}"$ square, including the seam allowances.



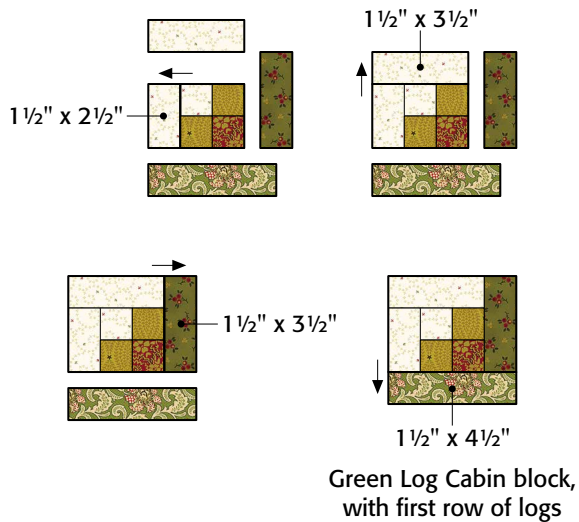
Make 16 gold and red four-patch units, $2\frac{1}{2}" \times 2\frac{1}{2}"$.



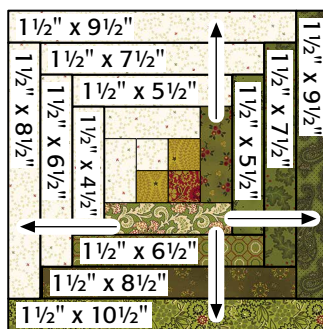
Make 8 gold and green four-patch units, $2\frac{1}{2}" \times 2\frac{1}{2}"$.

PIECING THE LOG CABIN BLOCKS

- 1 Choose the cream Log Cabin patchwork set, the Green Log Cabin patchwork set, and the 16 gold and red four-patch units.
- 2 Referring to the illustration and working clockwise around the four-patch unit, join cream rectangles in $2\frac{1}{2}$ " and $3\frac{1}{2}$ " lengths, and green rectangles in $3\frac{1}{2}$ " and $4\frac{1}{2}$ " lengths to the center gold and red four-patch unit. Press after the addition of each rectangle. The Green Log Cabin block with the first row of logs should measure $4\frac{1}{2}$ " square, including the seam allowances.

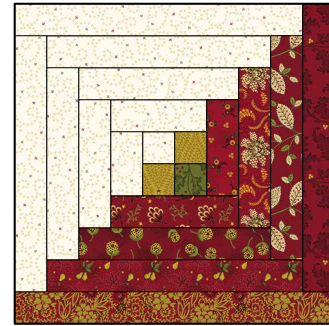


- 3 Continue working clockwise around the step 2 unit to join and press the remaining cream and green rectangles to complete the Green Log Cabin block. Repeat steps 2 and 3 to piece a total of 16 Green Log Cabin blocks measuring $10\frac{1}{2}$ " square, including the seam allowances.



Make 16
Green Log Cabin blocks,
 $10\frac{1}{2}$ " x $10\frac{1}{2}$ ".

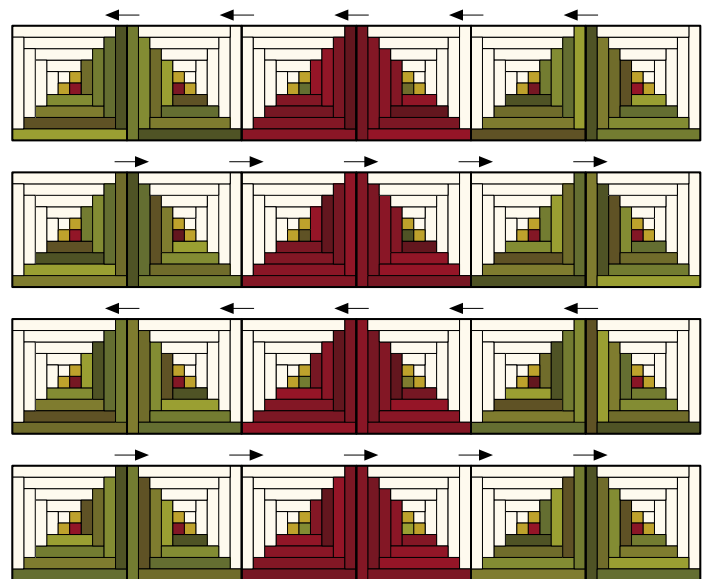
- 4 Adding to the remaining cream Log Cabin patchwork pieces, choose the Red Log Cabin patchwork set and the eight gold and green four-patch units.
- 5 Repeat steps 2 and 3 using the patchwork pieces gathered in step 4 to piece a total of eight Red Log Cabin blocks measuring $10\frac{1}{2}$ " square, including the seam allowances.



Make 8
Red Log Cabin blocks,
 $10\frac{1}{2}$ " x $10\frac{1}{2}$ ".

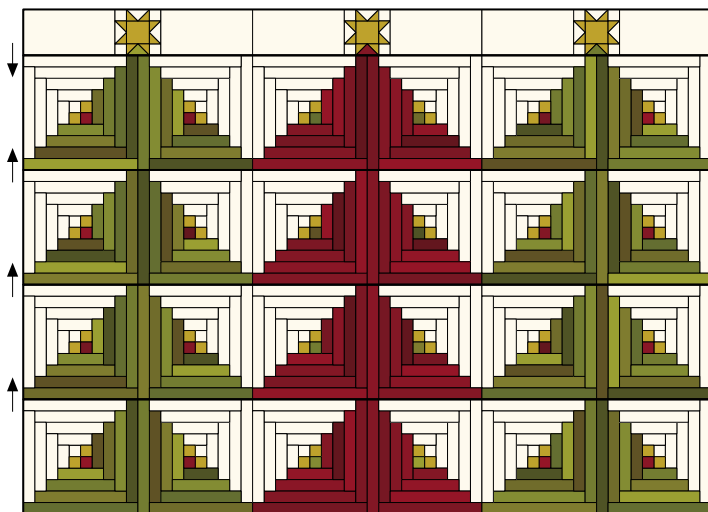
PIECING the LOG CABIN QUILT-CENTER UNIT and ADDING the TOP STAR UNIT

- 1 Referring to the illustration and rotating the blocks as needed to achieve the quilt design, lay out four Green Log Cabin blocks and two Red Log Cabin blocks. Join the blocks. Press. Repeat to piece four Log Cabin quilt-center rows measuring $10\frac{1}{2}$ " x $60\frac{1}{2}$ ", including the seam allowances.



Piece 4 Log Cabin quilt center rows
measuring $10\frac{1}{2}$ " x $60\frac{1}{2}$ ".
Press as shown.

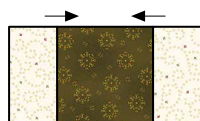
- 2 Referring again to the illustration, join the four Log Cabin rows to form the quilt center unit. Press. Last, join the top star unit to the quilt center unit as shown. Press. The quilt top should now measure $44\frac{1}{2}" \times 60\frac{1}{2}"$, including the seam allowances.



Quilt top with Log Cabin center unit and Top Star unit,
 $44\frac{1}{2}" \times 60\frac{1}{2}"$

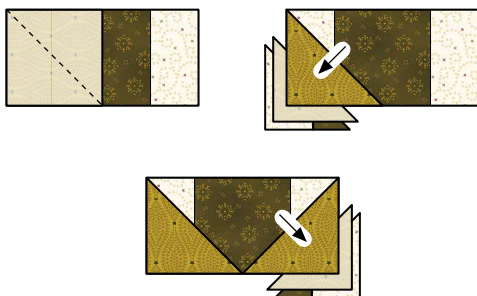
PIECING THE GIFT BOX BLOCKS

- 1 Select the Gift Box #1 block patchwork set. Join a cream $2" \times 3\frac{1}{2}"$ rectangle to each opposite side of the green 988-66 square. Press.



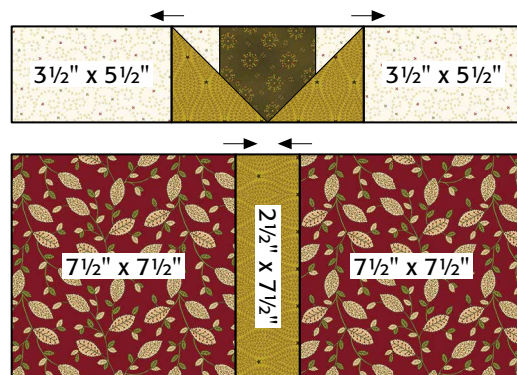
Partial Gift Box #1
partial bow unit,
 $3\frac{1}{2}" \times 6\frac{1}{2}"$

- 2 Prepare the two gold $3\frac{1}{2}"$ squares with diagonal sewing lines as previously instructed. Referring to the illustration, add two stitch-and-fold-triangles to the step 1 unit as "Piecing the Top Star Unit" on pages 3–4.



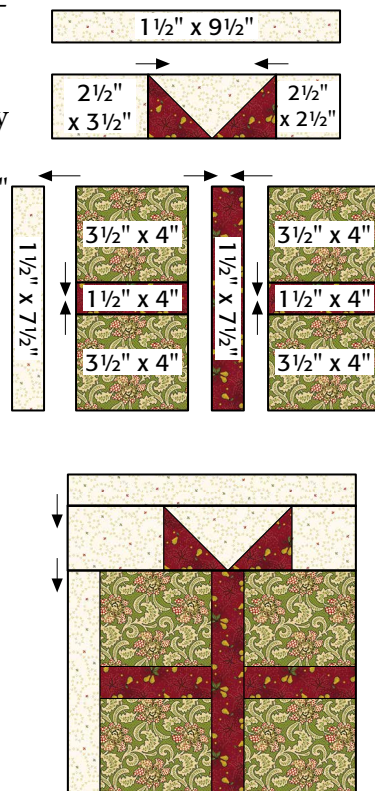
Completed Gift Box #1 bow unit,
 $3\frac{1}{2}" \times 6\frac{1}{2}"$

- 3 Join a cream $3\frac{1}{2}" \times 5\frac{1}{2}"$ rectangle to each short end of the step 2 unit. Press. Next, join the two red $7\frac{1}{2}"$ squares to each long side of the gold $2\frac{1}{2}" \times 7\frac{1}{2}"$ rectangle. Press. The pieced Gift Box #1 block should measure $10\frac{1}{2}" \times 16\frac{1}{2}"$, including the seam allowances.



Gift Box #1 block,
 $10\frac{1}{2}" \times 16\frac{1}{2}"$

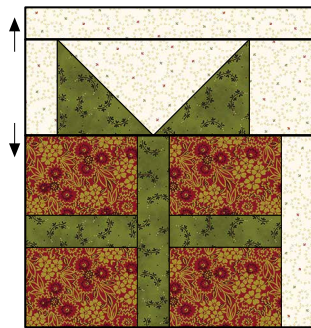
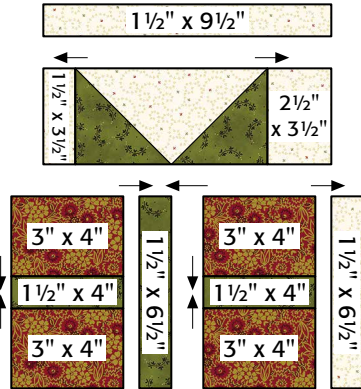
- 4 Select the Gift Box Block #2 patchwork set. Referring to the illustration, use the two red $2\frac{1}{2}"$ squares to add stitch-and-fold-triangles to the cream $2\frac{1}{2}" \times 4\frac{1}{2}"$ rectangle as previously instructed. Next, join the green $3\frac{1}{2}" \times 4"$ rectangles to each long side of the two red $1\frac{1}{2}" \times 4"$ rectangles as shown. Press. Lay out the pieced units and remaining patchwork pieces in three horizontal rows as shown. Join the units in each row. Press. Join the rows. Press. The pieced Gift Box #2 block should measure $9\frac{1}{2}" \times 10\frac{1}{2}"$, including the seam allowances.



Gift Box #2 block,
 $9\frac{1}{2}" \times 10\frac{1}{2}"$

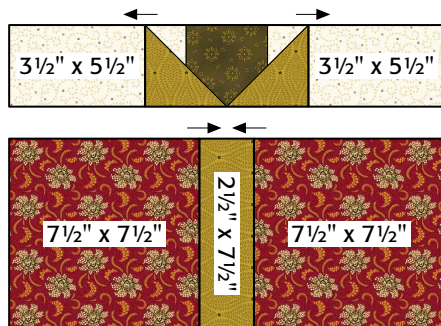
5 Select the Gift Box Block #3 patchwork set.

Referring to the illustration, use the two green $3\frac{1}{2}$ " squares to add stitch-and-fold-triangles to the cream $3\frac{1}{2}$ " x $6\frac{1}{2}$ " rectangle as previously instructed. Next join the red 3 " x 4 " rectangles to each long side of the two green $1\frac{1}{2}$ " x 4 " rectangles as shown. Press. Lay out the pieced units and remaining patchwork pieces in three horizontal rows as shown. Join the units in each row. Press. Join the rows. Press. The pieced Gift Box #3 block should measure $9\frac{1}{2}$ " x $10\frac{1}{2}$ ", including the seam allowances.



Gift Box #3 block,
 $9\frac{1}{2}$ " x $10\frac{1}{2}$ "

6 Select the Gift Box Block #4 patchwork set. Join the two cream 2 " x $3\frac{1}{2}$ " rectangles to each opposite side of the green $3\frac{1}{2}$ " square. Press the seam allowances toward the green square. Referring to the illustration, use the two gold $3\frac{1}{2}$ " squares to add stitch-and-fold-triangles to the cream and green patchwork unit as previously instructed. Next join a cream $3\frac{1}{2}$ " x $5\frac{1}{2}$ " rectangle to each short end of the pieced bow unit as shown. Press. Last, join the two red $7\frac{1}{2}$ " squares to each long side of the gold $2\frac{1}{2}$ " x $7\frac{1}{2}$ " rectangle. Press. Lay out the patchwork units in two horizontal rows as shown. Join the rows. Press. The pieced Gift Box #4 block should measure $10\frac{1}{2}$ " x $16\frac{1}{2}$ ", including the seam allowances.



Gift Box #4 block,
 $10\frac{1}{2}$ " x $16\frac{1}{2}$ "

PIECING and ADDING the BOTTOM GIFT BOX UNIT

- Using the quilt image on the handout cover as a guide, lay out the Gift Box #1–#4 blocks side by side in alternating positions with four cream $2\frac{1}{2}$ " x $10\frac{1}{2}$ " rectangles and the green $2\frac{1}{2}$ " x $10\frac{1}{2}$ " rectangle. Join the pieces. Press the seam allowances toward the cream and green rectangles. This partially pieced gift box unit should now measure $10\frac{1}{2}$ " x $60\frac{1}{2}$ ", including the seam allowances.
- Join the two $3\frac{1}{2}$ " x WOF trimmed green 988-66 strips together end to end to make one pieced strip. Press the seam allowance to one side.
- Fold the step 1 gift box unit in half crosswise to find the center and finger press a vertical crease. Align the center seam of the step 2 pieced green strip with the crease of the gift box unit to perfectly center it. Pin in place and join the units. Press the seam allowances toward the green strip. Trim away any excess green strip length that extends beyond the gift box unit. The completed bottom gift box unit should measure $13\frac{1}{2}$ " x $60\frac{1}{2}$ ", including the seam allowances.
- Referring to the quilt image on the handout cover, join the top edge of the completed bottom gift box unit to the bottom edge of the quilt top. Press the seam allowances toward the Log Cabin blocks. The completed quilt top should measure $57\frac{1}{2}$ " x $60\frac{1}{2}$ " square, including the seam allowances.

COMPLETING the QUILT

Layer and baste the quilt top, batting, and backing. Quilt the layers. Join the red binding strips to make one length and use it to bind the quilt.

Every effort has been made to ensure that all projects are error free. All the information is presented in good faith, however no warranty can be given nor results guaranteed as we have no control over the execution of instructions. Therefore, we assume no responsibility for the use of this information or damages that may occur as a result. When errors are brought to our attention, we make every effort to correct and post a revision as soon as possible. Please make sure to check www.henryglassfabrics.com for pattern updates prior to starting the project. We also recommend that you test the project prior to cutting for kits. Finally, all free projects are intended to remain free to you and are not for resale or other forms of distribution.



©2025 Kim Diehl