

Whispers of the Wild

by Barb Tourtillotte



Quilt size: 83" x 96" (2.11m x 2.44m)

Skill Level: Advanced Beginner

Whisper of the Wild Full Quilt

Designed by Cathey Marie Designs

www.catheymariedesigns.com

Whisper of the Wild Full Quilt Ordering Guide

SKU	Yards	Meters	6 Kits	12 Kits
 2582B-73 (8yd bolt)	2/3 yds	0.61m	1 bolt	1 bolt
 2583-77	3/4 yds	0.69m	1 bolt	1 bolt
 2584-93	2/3 yds	0.61m	1 bolt	1 bolt
 2585-33	1 yds	0.91m	1 bolt	1 bolt
 2585-77	1 1/4 yds	1.14m	1 bolt	2 bolts
 2586-90	7/8 yds	0.80m	1 bolt	1 bolt
 2587-33	2/3 yds	0.61m	1 bolt	1 bolt
 2587-66	5/8 yds	0.57m	1 bolt	1 bolt
 2588-79*	3/4 yds	0.69m	1 bolt	1 bolt
 2589P-76 (8yd bolt)	2/3 yds	0.61m	1 bolt	1 bolt
 3200-63	1 1/2 yds	1.37m	1 bolt	2 bolts

44" Backing Fabric Option

2584-93	7 5/8 yds	6.97m	4 bolts	7 bolts
---------	-----------	-------	---------	---------

108" Backing Fabric Option

2670-78	2 5/8 yds	2.40m	1 bolt	2 bolts
---------	-----------	-------	--------	---------

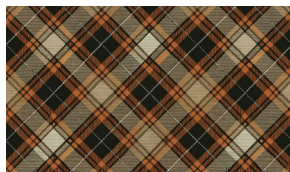
* Indicates binding fabric.

FO = 18" x 22" (0.45m x 0.55m)

All fabric quantities are based on 15yd bolts unless otherwise indicated.



2583-77
Monotone Tossed Animals
Teal



2584-93
Bias Plaid
Multi



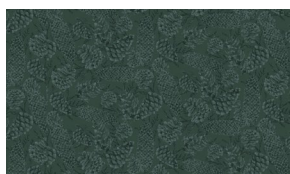
2589P-76
Scenic Panel
Multi



2282B-73
Animal Blocks
Multi



2585-33
Pinecones
Brown



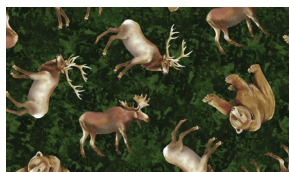
2585-77
Pinecones
Teal



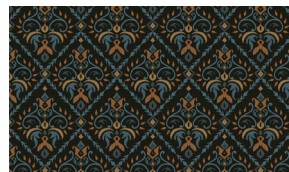
2586-90
Birch Texture
Cream



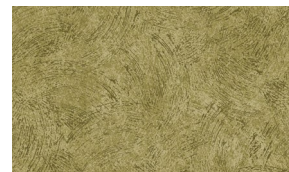
2587-33
Tossed Wildlife
Brown



2587-66
Tossed Wildlife
Green



2588-79*
Foulard
Multi



3200-63
Brushstrokes
Olive

Henry Glass & Co. Inc.

148 West 37th Street - New York, NY 10018 - Tel: 800-294-9495 - Fax: 212-679-4578 - www.henryglassfabrics.net