



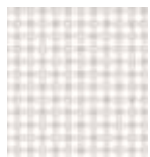
Finished Size of Project: **36" x 49½" (0.91m x 1.26m)**
Fabric Collection Name and Designer: **Redberry Lane by Gail Pan**
Technique: **Pieced**
Project Designed by: **Gail Pan**
Skill Level: **Confident Beginner**

Fabric Requirements

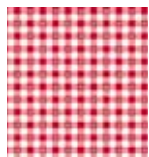
DESIGN	COLOR	ITEM ID	YARDAGE
(A) Daisy Check	Tan	3488-43	1/8 yd (0.11m)
(B) Daisy Check	Red	3488-80	3/4 yd (0.69m)
(C) Mini Calico	White	3489-18	1/4 yd (0.23m)
(D) Mini Calico	Red	3489-80	1/4 yd (0.23m)
(E) Daisy Sprig	White	3490-18	1/4 yd (0.23m)
(F) Daisy Sprig	Red	3490-80	1/4 yd (0.23m)
(G) Birdhouse Trellis	White	3491-18	1/4 yd (0.23m)
(H) Birdhouse Trellis	Red	3491-80	1/4 yd (0.23m)
(I) Hash Tag House Toss	White	3492-18	1/4 yd (0.23m)
(J) Hash Tag House Toss	Red	3492-80	1/4 yd (0.23m)
(K) Viney Stripe	White	3493-18	1/4 yd (0.23m)
(L) Viney Stripe	Red	3493-80	1/4 yd (0.23m)
(M) House of Love Toss	White	3494-18	1/4 yd (0.23m)
(N) House of Love Toss	Red	3494-80	1/4 yd (0.23m)
(O) Redberry Lane Panel	Red	3495P-80	2/3 yd (0.61m) or 1 panel*
(P) Tiny Houses	Red	3497-88	5/8 yd (0.57m)**

* Unused strips from the panel can be used in the Garden Tote project.

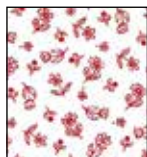
** includes binding



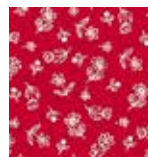
(A)



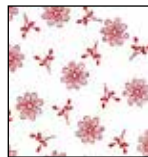
(B)



(C)



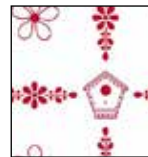
(D)



(E)



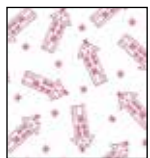
(F)



(G)



(H)



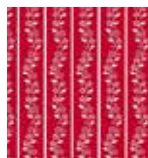
(I)



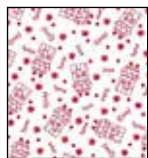
(J)



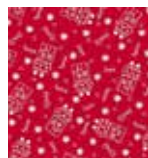
(K)



(L)



(M)



(N)



(O)



(P)

All possible care has been taken to ensure the accuracy of this pattern. We are not responsible for printing errors or the manner in which individual work varies.

Please read the instructions carefully before starting this project. If kitting it is recommended a sample is made to confirm accuracy.

All free projects are intended to remain free and are not for resale.

Backing (Purchased Separately)

44" (1.12m) wide
Tiny Houses White 3497-18 2½ yds (2.29m)



Backing
44"

Additional Materials:

- Batting 44" x 58" (1.12m x 1.47m)
- Thread and sewing supplies

Cutting Instructions

Notes:

- Please make sure to check henryglassfabrics.net for pattern updates prior to starting the project.
- All strips are cut across the width of fabric (WOF) from selvage to selvage edge unless otherwise noted.

Fabric A, cut:

- (1) 1½" x WOF; sub-cut
- (12) 1½" squares

Fabric B, cut:

- (3) 4½" x WOF; sew together end to end with diagonal seams and cut (2) 4½" x 42"
- (2) 4½" x 36½"

Fabric C, cut:

- (1) 1½" x WOF; sub-cut
- (2) 1½" x 11"
- (1) 1½" x WOF; sub-cut
- (2) 1½" x 13"

Fabric D, cut:

- (2) 1½" x WOF; sub-cut
- (3) 1½" x 13"

Fabric E, cut:

- (1) 1½" x WOF; sub-cut
- (2) 1½" x 11"
- (1) 1½" x WOF; sub-cut
- (2) 1½" x 13"

Fabric F, cut:

- (1) 1½" x WOF; sub-cut
- (2) 1½" x 9"
- (1) 1½" x WOF; sub-cut
- (2) 1½" x 11"
- (2) 1½" x WOF; sub-cut
- (3) 1½" x 13"

Fabric G, cut:

- (1) 1½" x WOF; sub-cut
- (2) 1½" x 11"
- (1) 1½" x WOF; sub-cut
- (2) 1½" x 13"

Fabric H, cut:

- (1) 1½" x WOF; sub-cut
- (2) 1½" x 9"
- (1) 1½" x WOF; sub-cut
- (2) 1½" x 11"
- (1) 1½" x WOF; sub-cut
- (2) 1½" x 13"

Fabric I, cut:

- (1) 1½" x WOF; sub-cut
- (2) 1½" x 11"
- (1) 1½" x WOF; sub-cut
- (2) 1½" x 13"

All possible care has been taken to ensure the accuracy of this pattern. We are not responsible for printing errors or the manner in which individual work varies.

Please read the instructions carefully before starting this project. If kitting it is recommended a sample is made to confirm accuracy.

All free projects are intended to remain free and are not for resale.

Fabric J, cut:

- (1) 1½" x WOF; sub-cut
 - (2) 1½" x 9"
- (1) 1½" x WOF; sub-cut
 - (2) 1½" x 11"
- (2) 1½" x WOF; sub-cut
 - (3) 1½" x 13"

Fabric K, cut:

- (1) 1½" x WOF; sub-cut
 - (2) 1½" x 11"
- (1) 1½" x WOF; sub-cut
 - (2) 1½" x 13"

Fabric L, Cut:

- (1) 1½" x WOF; sub-cut
 - (2) 1½" x 9"
- (1) 1½" x WOF; sub-cut
 - (2) 1½" x 11"
- (2) 1½" x WOF; sub-cut
 - (3) 1½" x 13"

Fabric M, cut:

- (1) 1½" x WOF; sub-cut
 - (2) 1½" x 11"
- (1) 1½" x WOF; sub-cut
 - (2) 1½" x 13"

Fabric N, cut:

- (1) 1½" x WOF; sub-cut
 - (2) 1½" x 9"
- (1) 1½" x WOF; sub-cut
 - (2) 1½" x 11"
- (2) 1½" x WOF; sub-cut
 - (3) 1½" x 13"

Fabric O, fussy cut:

- (6) 9" squares each centered on a house block

Fabric P, cut:

- (1) 1½" x WOF; sub-cut
 - (2) 1½" x 9"
- (1) 1½" x WOF; sub-cut
 - (2) 1½" x 11"
- (5) 2½" x WOF for the binding

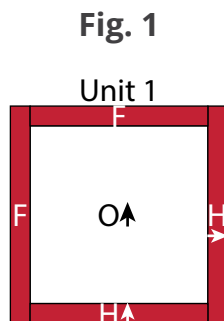
Backing, cut:

- (2) 45" x WOF; sew together and trim to make the 45" x 59" back.

Sewing

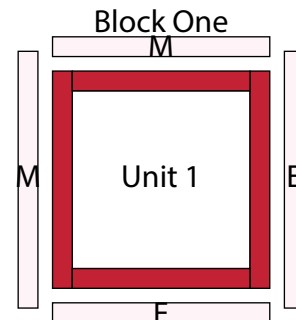
- Sew using a $\frac{1}{4}$ " seam allowance with right sides together (RST) unless otherwise indicated. Press seams towards the darker fabric, unless otherwise indicated.
- The arrows in the figures represent the fabric print direction. Pay attention to the fabric and unit orientations when assembling the various components.

- Sew (1) $1\frac{1}{2}$ " x 9" **Fabric F** strip to the top of (1) 9" **Fabric O** square. Sew (1) $1\frac{1}{2}$ " x 9" **Fabric H** strip to the bottom of the **Fabric O** square. Sew (1) $1\frac{1}{2}$ " x 11" **Fabric F** strip to the left side of the **Fabric O** square. Sew (1) $1\frac{1}{2}$ " x 11" **Fabric H** strip to the right side of the **Fabric O** square to make (1) Unit 1 square (**Fig. 1**).



- Sew (1) $1\frac{1}{2}$ " x 11" **Fabric M** strip to the top of the Unit 1 square. Sew (1) $1\frac{1}{2}$ " x 11" **Fabric E** strip to the bottom of the Unit 1 square. Sew (1) $1\frac{1}{2}$ " x 13" **Fabric M** strip to the left side of the Unit 1 square. Sew (1) $1\frac{1}{2}$ " x 13" **Fabric E** strip to the right side of the Unit 1 square to make (1) 13" Block One square (**Fig. 2**).

Fig. 2



- Repeat Steps 1-2 and refer to **Figures 3-7** for fabric identification, placement and orientation to make (1) of each block square for Block Two through Block Six.

Fig. 3

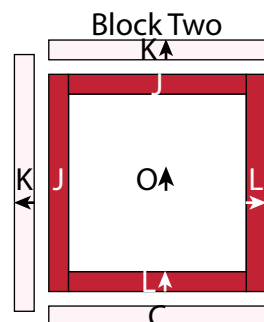


Fig. 4

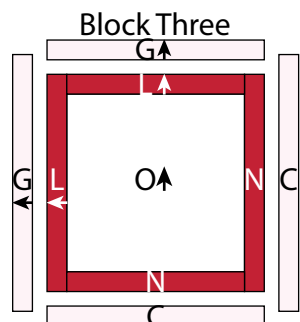


Fig. 5

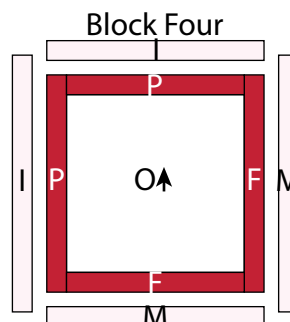
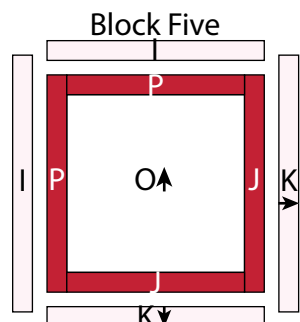


Fig. 6

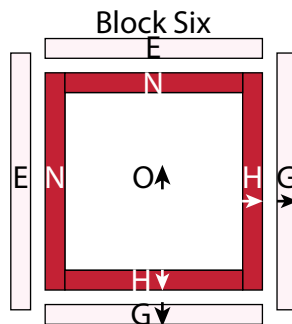


All possible care has been taken to ensure the accuracy of this pattern. We are not responsible for printing errors or the manner in which individual work varies.

Please read the instructions carefully before starting this project. If kitting it is recommended a sample is made to confirm accuracy.

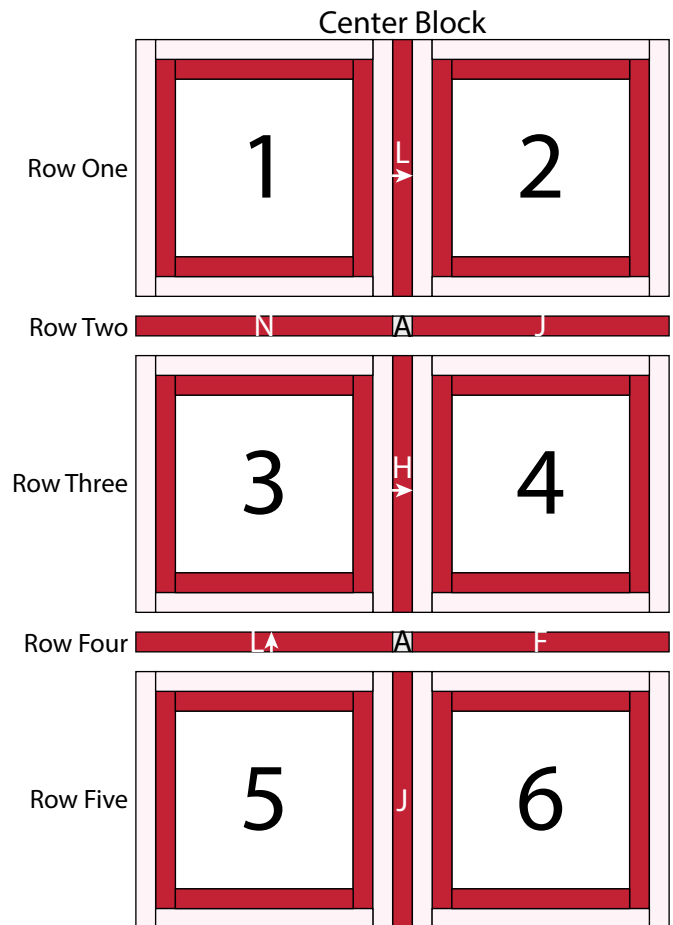
All free projects are intended to remain free and are not for resale.

Fig. 7



4. Sew together the Block One square, (1) 1½" x 13" **Fabric L** strip and the Block Two square, in that order from left to right, to make Row One (**Fig. 8**).
5. Sew together (1) 1½" x 13" **Fabric N** strip, (1) 1½" **Fabric A** square and (1) 1½" x 13" **Fabric J** strip, end to end and in that order from left to right, to make Row Two (**Fig. 8**).
6. Repeat Steps 4-5 and refer to **Fig. 8** for fabric/component identification, placement and orientation, to make Row Three through Row Five.
7. Sew together the (5) Rows, lengthwise and in numerical order from top to bottom, to make the 26½" x 40" Center Block (**Fig. 8**).

Fig. 8



8. Sew together (1) 1½" x 13" **Fabric J** strip, (1) 1½" **Fabric A** square, (1) 1½" x 13" **Fabric F** strip, (1) 1½" **Fabric A** square and (1) 1½" x 13" **Fabric N** strip, end to end and in that order from top to bottom, to make the Left Side Border (**Fig. 9**).
9. Sew together (1) 1½" x 13" **Fabric N** strip, (1) 1½" **Fabric A** square, (1) 1½" x 13" **Fabric D** strip, (1) 1½" **Fabric A** square and (1) 1½" x 13" **Fabric L** strip, end to end and in that order from top to bottom, to make the Right Side Border (**Fig. 10**).

All possible care has been taken to ensure the accuracy of this pattern. We are not responsible for printing errors or the manner in which individual work varies.

Please read the instructions carefully before starting this project. If kitting it is recommended a sample is made to confirm accuracy.

All free projects are intended to remain free and are not for resale.

Fig. 9

Left Side
Border



Fig. 10

Right Side
Border



order from left to right, to make the Bottom Border (**Fig. 12**).

Fig. 12



Quilt Top Assembly

Follow the Quilt Layout (Page 10) while assembling the quilt top.

12. Sew the Left Side Border and Right Side Border to the left and right sides of the Center Block.
13. Sew the Top Border and Bottom Border to the top and to the bottom of the Center Block.
14. Sew (1) $4\frac{1}{2}$ " x 42" **Fabric B** strip to each side of the Center Block. Sew (1) $4\frac{1}{2}$ " x $36\frac{1}{2}$ " **Fabric B** strip to the top and bottom of the Center Block to complete the quilt top which should measure $36\frac{1}{2}$ " x 50".

10. Sew together (1) $1\frac{1}{2}$ " **Fabric A** square, (1) $1\frac{1}{2}$ " x 13" **Fabric D** strip, (1) $1\frac{1}{2}$ " **Fabric A** square, (1) $1\frac{1}{2}$ " x 13" **Fabric F** strip and (1) $1\frac{1}{2}$ " **Fabric A** square, end to end and in that order from left to right, to make the Top Border (**Fig. 11**).

Fig. 11



11. Sew together (1) $1\frac{1}{2}$ " **Fabric A** square, (1) $1\frac{1}{2}$ " x 13" **Fabric H** strip, (1) $1\frac{1}{2}$ " **Fabric A** square, (1) $1\frac{1}{2}$ " x 13" **Fabric D** strip and (1) $1\frac{1}{2}$ " **Fabric A** square, end to end and in that

Layering, Quilting and Finishing

15. Layer the backing (wrong side up), batting, and quilt top (right side up). Baste the layers together and quilt as desired. Trim excess batting and backing even with the top of the quilt.

Binding

16. Sew together (5) $2\frac{1}{2}$ " x WOF **Fabric P** binding strips end to end with diagonal seams. Press the seams open. Press the binding strip in half wrong sides together.
17. Leaving an 8" tail of binding and beginning along an edge of the quilt top, match raw

All possible care has been taken to ensure the accuracy of this pattern. We are not responsible for printing errors or the manner in which individual work varies.

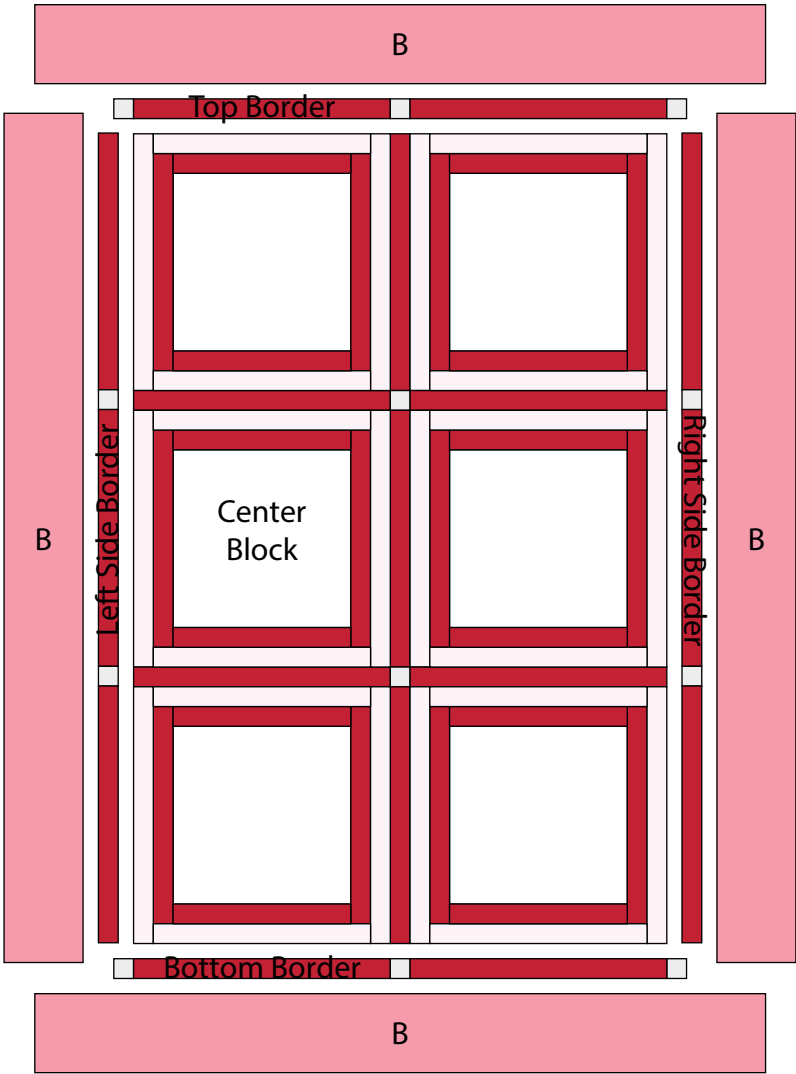
Please read the instructions carefully before starting this project. If kitting it is recommended a sample is made to confirm accuracy.

All free projects are intended to remain free and are not for resale.

edges of the binding to the raw edges of the quilt top. Sew the binding to the outside edge around all four sides and miter corners. Stop sewing approximately 12" from where you started and backstitch.

18. Lay both loose ends of binding flat along the quilt edge. Where these two loose ends meet, fold them back onto themselves and press to form a crease. Using this crease as your stitching line, sew the two open ends of the binding together, right sides matching. Trim seam to $\frac{1}{4}$ " and press seam open. Finish sewing the binding to the quilt top.
19. Turn the binding over the raw edge to the back of the quilt and hand or machine stitch in place.

Quilt Layout



*All possible care has been taken to ensure the accuracy of this pattern. We are not responsible for printing errors or the manner in which individual work varies.
Please read the instructions carefully before starting this project. If kitting it is recommended a sample is made to confirm accuracy.
All free projects are intended to remain free and are not for resale.*