

Berry Baskets

by Kim Diehl



Finished Quilt Size: 57½" x 63½"



Henry Glass & Co., Inc.



49 West 37th Street, New York, NY 10018

tel: 212-686-5194 • fax: 212-532-3525

Toll-free: 800-294-9495

www.henryglassfabrics.net

facebook

Berry Baskets

Finished Quilt Size: 57½" x 63½"

MATERIALS

This quilt features prints from Kim Diehl's Pennyberry Farm collection for Henry Glass Fabrics. Yardages are based on a 42" width of useable fabric after prewashing and removing selvages. Fat quarters measure 18" x 21".



2000-88
fat quarter



2001-22
fat quarter



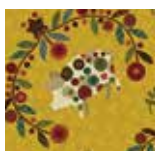
2002-77
fat quarter



2003-11
fat quarter



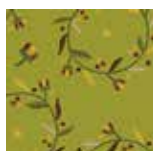
2004-33
fat quarter



2005-44
fat quarter



2007-33
⅞ yard



2008-66
⅞ yard



2009-99
⅝ yard



2010-77
fat quarter



2011-40
1½ yards



2012-88
fat quarter



2013-11
fat quarter



2013-22
fat quarter



2014-30
fat quarter



2015-33
fat quarter



2016-11
fat quarter



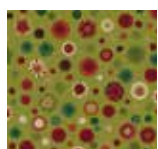
2017-88
fat quarter



2018-40
1⅓ yards



2019-44
fat quarter



2020-66
⅞ yard

Additional materials:

- 4 yards of fabric for backing
- 64" x 70" piece of batting
- Standard sewing and quilting supplies

CUTTING

Cut all pieces across the width of the fabric in the order given unless directly differently. WOF is defined as width of fabric.

From the cream fallen leaves print, 2011-40, cut:
4 strips, 3" x WOF; crosscut into 40 squares, 3" x 3".

Cut each square in half diagonally *once* to yield 2 triangles (total of 80)

14 strips, 1½" x WOF; crosscut into 20 rectangles, 1½" x 12½", and 20 rectangles, 1½" x 10½"

8 strips, 2½" x WOF; remove the selvages

From the light green wreathed in thyme print, 2008-66, cut:

4 strips, 3" x WOF; crosscut into 40 squares, 3" x 3".

Cut each square in half diagonally *once* to yield 2 triangles, (total of 80)

5 strips, 2½" x WOF; crosscut into 80 squares, 2½" x 2½"

Reserve the scraps of the light green print.

From the medium green pennyberries print, 2020-66, cut:

10 strips, 2½" x WOF; crosscut into 160 squares, 2½" x 2½"

Reserve the scraps of the medium green print.

From the black confetti crescents print, 2009-99, cut:

2 strips, 1" x WOF; crosscut into 20 rectangles, 1" x 2½"

6 binding strips, 2½" x WOF; remove the selvages

From the cream confetti crescents print, 2018-40, cut:

3 strips, 2¼" x WOF; crosscut into 40 rectangles, 2¼" x 2½"

8 strips, 2½" x WOF; crosscut into 40 rectangles, 2½" x 4½", and 40 squares, 2½" x 2½"

4 strips, 3½" x WOF; crosscut into 40 squares, 3½" x 3½"

From the brown blooming plaid print, 2007-33, cut:

8 strips, 1" x WOF; remove the selvages

8 strips, 1½" x WOF; remove the selvages

Reserve the remainder of the brown plaid print.

From *each* of the 15 assorted print fat quarters and the reserved remainder of the brown plaid print, cut 1 set of the following pieces:

1 rectangle, $2\frac{1}{2}$ " x $4\frac{1}{2}$ " (combined total of 16)

2 squares, $2\frac{1}{2}$ " x $2\frac{1}{2}$ " (combined total of 32)

1 rectangle, $4\frac{1}{2}$ " x $8\frac{1}{2}$ " (combined total of 16)

Keep the above pieces organized by print into 16 berry patchwork sets. Reserve the remainder of these assorted prints.

From the reserved remainder of the red 2000-88 print, the deep teal 2002-77 print, the yellow 2005-44 print, and the brown 2015-33 print, cut:

1 additional set of berry patchwork pieces (total of four new sets), for a combined total of 20 berry patchwork sets when added to the sets that were previously cut. Reserve the scraps of all 15 assorted prints and the brown plaid print.

From the reserved remainder of all assorted-print scraps, excluding the black print, cut a *combined* total of:

440 checkerboard squares, $1\frac{1}{2}$ " x $1\frac{1}{2}$ " (You may wish to cut an extra handful of $1\frac{1}{2}$ " squares as your fabrics permit, for added choices as you stitch the checkerboard units.)

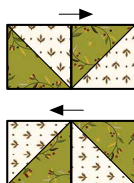
PIECING the FRAMED PINWHEEL UNITS

- 1 Join a cream fallen leaves 3" triangle and a light green wreathed in thyme 3" triangle along the long diagonal edges. Press. Trim the unit on all sides to measure $2\frac{1}{2}$ " square, removing the dog-ear points in the same step. Repeat to piece a total of 80 half-square-triangle units measuring $2\frac{1}{2}$ " square, including the seam allowances.



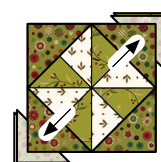
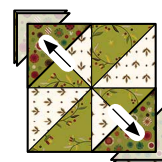
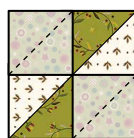
Make 80 half-square-triangle units, $2\frac{1}{2}$ " x $2\frac{1}{2}$ ".

- 2 Lay out four pieced half-square-triangle units in two horizontal rows as shown. Join the units in each row. Press. Join the rows. Press. Repeat to piece a total of 20 pinwheel units measuring $4\frac{1}{2}$ " square, including the seam allowances.



Make 20 pinwheel units, $4\frac{1}{2}$ " x $4\frac{1}{2}$ ".

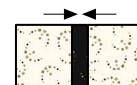
- 3 Using a pencil and an acrylic ruler, draw a diagonal sewing line from corner to corner on the wrong side of each of the 160 medium green pennyberry $2\frac{1}{2}$ " squares.
- 4 Layer two prepared medium green squares onto two opposite corners of a step 2 pinwheel unit as shown. Stitch the squares along the drawn diagonal lines. Press. Fold the resulting inner triangles open, aligning the corners with the corners of the pinwheel unit. Press. Trim away the layers beneath the top triangles, leaving $\frac{1}{4}$ " seam allowances. In the same manner, add two medium green triangles to the remaining corners of the pinwheel unit. Repeat to piece a total of 20 framed pinwheel units measuring $4\frac{1}{2}$ " square, including the seam allowances. Reserve the remaining prepared medium green $2\frac{1}{2}$ " squares for later use.



Make 20 framed pinwheel units, $4\frac{1}{2}$ " x $4\frac{1}{2}$ ".

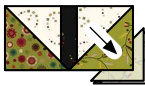
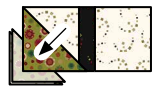
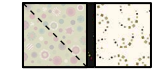
PIECING the BERRY BLOCK TOP UNITS

- 1 Select the 20 black 1 " x $2\frac{1}{2}$ " rectangles, the 40 cream crescent $2\frac{1}{4}$ " x $2\frac{1}{2}$ " rectangles, the 40 cream crescent $2\frac{1}{2}$ " x $4\frac{1}{2}$ " rectangles, the reserved prepared medium green $2\frac{1}{2}$ " squares, and the 80 light green $2\frac{1}{2}$ " squares.
- 2 Draw a diagonal sewing line on the wrong side of the 80 light green $2\frac{1}{2}$ " squares as previously instructed.
- 3 Join the long side of two cream $2\frac{1}{4}$ " x $2\frac{1}{2}$ " rectangles to each long side of a black 1 " x $2\frac{1}{2}$ " rectangle. Press. Repeat to piece a total of 20 stem units measuring $2\frac{1}{2}$ " x $4\frac{1}{2}$ ", including the seam allowances.



Make 20 units, $2\frac{1}{2}$ " x $4\frac{1}{2}$ ".

- 4 Select one pieced stem unit, one prepared medium green $2\frac{1}{2}$ " square, and one prepared light green $2\frac{1}{2}$ " square. Layer a prepared medium green square onto the left end of the stem unit as shown. Stitch the pair along the drawn diagonal line. Fold the resulting inner medium green triangle open, aligning the corner with the corner of the stem unit. Press. Trim away the layers beneath the top medium green triangle, leaving a $\frac{1}{4}$ " seam allowance. In the same manner, use the prepared light green $2\frac{1}{2}$ " square to add a mirror-image star point to the remaining end of the stem unit. Repeat to piece a total of 20 Berry block top star-point units measuring $2\frac{1}{2}$ " x $4\frac{1}{2}$ ", including the seam allowances. Ensure that the placement of the green prints is consistent for all units.



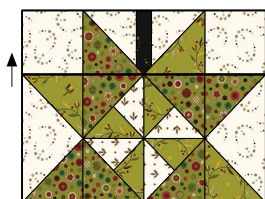
Make 20 top star-point units, $2\frac{1}{2}$ " x $4\frac{1}{2}$ ".

- 5 Referring to the illustration for placement of the green prints, and using one prepared medium green square, one prepared light green $2\frac{1}{2}$ " square, and one cream crescent print $2\frac{1}{2}$ " x $4\frac{1}{2}$ " rectangle for each unit, stitch a total of 40 Berry block side star-point units as previously instructed, with each unit measuring $2\frac{1}{2}$ " x $4\frac{1}{2}$ ", including the seam allowances. Ensure that the placement of the green prints is consistent for all units. Reserve the remaining prepared medium green and light green $2\frac{1}{2}$ " squares for later use.



Make 40 side star-point units, $2\frac{1}{2}$ " x $4\frac{1}{2}$ ".

- 6 Lay out one previously pieced framed pinwheel unit, two side star-point units from step 5, one top star-point unit from step 4, and two cream crescent print $2\frac{1}{2}$ " squares in two horizontal rows as shown. Join the pieces in each row. Press. Join the rows. Press. Repeat to piece a total of 20 Berry block top units measuring $6\frac{1}{2}$ " x $8\frac{1}{2}$ ", including the seam allowances.



Make 20 Berry block top units, $6\frac{1}{2}$ " x $8\frac{1}{2}$ ".

PIECING the BERRY BLOCK BOTTOM UNITS

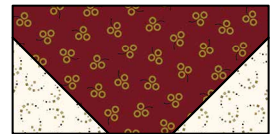
- 1 Select the 20 berry patchwork sets, all of the reserved prepared medium green and light green $2\frac{1}{2}$ " squares, and the cream crescent print $3\frac{1}{2}$ " x $4\frac{1}{2}$ " squares. From each set, choose the $2\frac{1}{2}$ " x $4\frac{1}{2}$ " rectangle. Referring to the illustration for placement of the green prints, and using one reserved prepared medium green and one prepared light green $2\frac{1}{2}$ " prepared square for each rectangle, stitch 20 Berry block bottom star-point units measuring $2\frac{1}{2}$ " x $4\frac{1}{2}$ ". Ensure that the placement of the green prints is consistent for all units.



Make 1 unit, $2\frac{1}{2}$ " x $4\frac{1}{2}$ ", from each of the 20 berry patchwork sets.

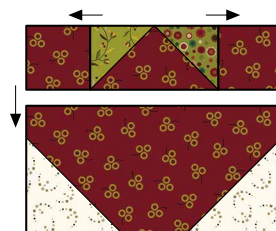
- 2 Draw a diagonal sewing line on the wrong side of each cream crescent print $3\frac{1}{2}$ " square as previously instructed.

- 3 From each of the 20 berry patchwork sets, choose the $4\frac{1}{2}$ " x $8\frac{1}{2}$ " rectangle. Referring to the illustration, use two prepared cream $3\frac{1}{2}$ " squares to add triangle corners to two adjacent corners of each $4\frac{1}{2}$ " x $8\frac{1}{2}$ " rectangle as previously instructed. Using the rectangles from each berry patchwork set, stitch a total of 20 berry units measuring $4\frac{1}{2}$ " x $8\frac{1}{2}$ ", including the seam allowances.



Make 20 berry units, $4\frac{1}{2}$ " x $8\frac{1}{2}$ ".

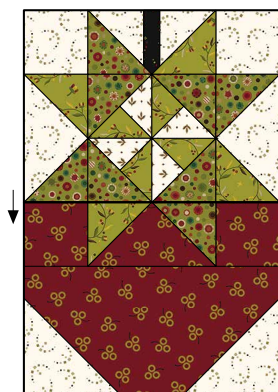
- 4 Select one bottom star-point unit from step 1, one matching-print berry bottom unit from step 2, and the two matching-print $2\frac{1}{2}$ " squares remaining in the berry patchwork set. Lay out the pieces in two horizontal rows as shown. Join the pieces in the top row. Press. Join the rows. Press. Repeat to piece a total of 20 Berry block bottom units measuring $6\frac{1}{2}$ " x $8\frac{1}{2}$ ", including the seam allowances.



Make 20 Berry block bottom units, $6\frac{1}{2}$ " x $8\frac{1}{2}$ ".

COMPLETING the BERRY BLOCKS

Join a pieced Berry block top unit to a pieced Berry block bottom unit. Press. Repeat to piece a total of 20 Berry blocks measuring $8\frac{1}{2}" \times 12\frac{1}{2}"$, including the seam allowances.

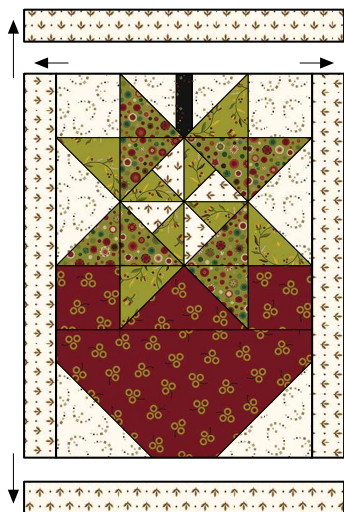


Make 20 Berry blocks, $8\frac{1}{2}" \times 12\frac{1}{2}"$.

CREAM-FRAMED BERRY BLOCKS

1 Referring to the quilt image on the handout cover, or choosing your own selection of blocks, select 10 Berry blocks to be framed with cream print. Next, choose the 20 cream fallen leaves print $1\frac{1}{2}" \times 12\frac{1}{2}"$ rectangles, and the 20 cream fallen leaves print $1\frac{1}{2}" \times 10\frac{1}{2}"$ rectangles.

2 Join a cream $1\frac{1}{2}" \times 12\frac{1}{2}"$ rectangle to each long side of a pieced Berry block. Press. Join a cream $1\frac{1}{2}" \times 10\frac{1}{2}"$ rectangle to the remaining top and bottom edges of the block. Press. Repeat to piece a total of 10 cream-framed Berry blocks measuring $10\frac{1}{2}" \times 14\frac{1}{2}"$, including the seam allowances.



Make 10 cream-framed Berry blocks, $10\frac{1}{2}" \times 14\frac{1}{2}"$.

CHECKERBOARD-FRAMED BERRY BLOCKS

1 Select the assorted-print $1\frac{1}{2}"$ squares cut for the checkerboard units.

2 Choosing the prints randomly, select 12 assorted-print $1\frac{1}{2}"$ squares. Join the squares. Press. Repeat to piece a total of 40 long checkerboard units measuring $1\frac{1}{2}" \times 12\frac{1}{2}"$, including the seam allowances.



Make 40 long checkerboard units, $1\frac{1}{2}" \times 12\frac{1}{2}"$.

3 Choosing the prints randomly, select 10 assorted-print $1\frac{1}{2}"$ squares. Repeat step 2 to piece a total of 40 short checkerboard units measuring $1\frac{1}{2}" \times 10\frac{1}{2}"$, including the seam allowances.



Make 40 short checkerboard units, $1\frac{1}{2}" \times 10\frac{1}{2}"$.

4 Join a long checkerboard unit to the right and left sides of a pieced Berry block, turning the strips as needed so the patchwork seams will nest together. Press. Join a short checkerboard unit to the remaining top and bottom sides of the block, again turning the checkerboard units in the direction that will best allow the seams to nest together. Press. Repeat to piece a total of 10 checkerboard-framed Berry blocks measuring $10\frac{1}{2}" \times 14\frac{1}{2}"$, including the seam allowances.



Make 10 checkerboard-framed Berry blocks, $10\frac{1}{2}" \times 14\frac{1}{2}"$.

PIECING the QUILT CENTER

Referring to the quilt image on the handout cover, lay out the pieced checkerboard-framed Berry blocks and the pieced cream-framed Berry blocks in alternating positions to make four horizontal rows of five blocks. Join the blocks in each row. Press the seam allowances toward the cream-framed blocks. Join the rows. Press the seam allowances toward the rows that begin and end with the cream-framed blocks. The pieced quilt center should measure $50\frac{1}{2}" \times 56\frac{1}{2}"$, including the seam allowances.

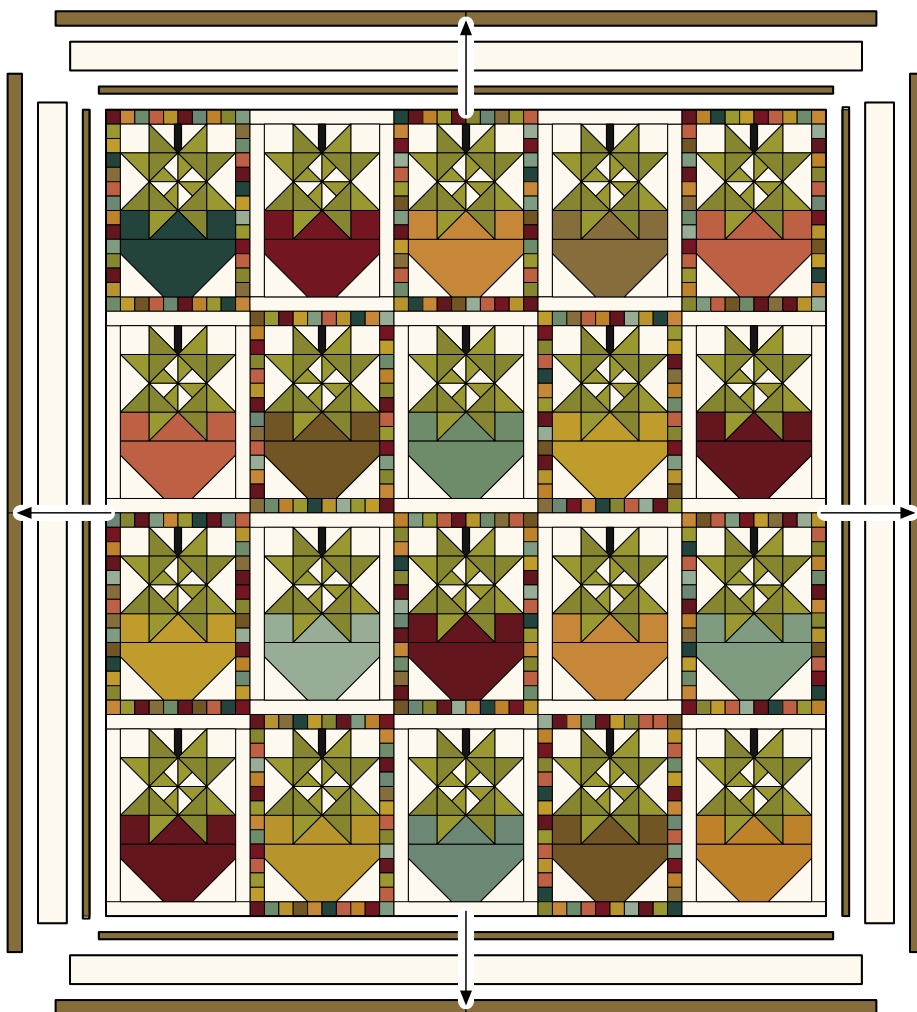
PIECING and ADDING the BORDERS

- ❶ Select the eight brown blooming plaid 1"-wide strips and the eight brown blooming plaid 1½"-wide strips.
- ❷ Join the brown 1"-wide strips end to end in four pairs of two strips. Press the seam allowances open.
- ❸ Referring to the assembly diagram that follows, join one pieced brown 1"-wide strip to the right and left sides of the quilt center. Press the seam allowances toward the brown print. Trim away the excess lengths that extend beyond the quilt center. Next, join the remaining two pieced brown 1"-wide strips to the top and bottom sides of the quilt center. Press the seam allowances toward the brown print. Trim away the excess lengths that extend beyond the quilt center. Reserve the pieced pairs of brown 1½"-wide strips for step 6.
- ❹ Join the cream leaf print 2½"-wide strips in pairs of two, ensuring that the leaf print is positioned in the same direction for each pair. Press the seam allowances to one side.
- ❺ Referring to the assembly diagram, join one pieced cream 2½"-wide strip to the right and left sides of the quilt top. Press the seam allowances toward the cream print. Trim away the excess lengths that extend beyond the quilt top. Next, join the remaining two pieced cream strips to the top and bottom sides of the quilt top. Press the seam allowances toward the cream print. Trim away the excess lengths that extend beyond the quilt top.

- ❻ Join two of the reserved pieced brown 1½"-wide strips to the right and left sides of the quilt top. Press the seam allowances toward the brown print. Trim away the excess lengths that extend beyond the quilt top. Next, join the remaining two pieced brown strips to the top and bottom sides of the quilt top. Press the seam allowances toward the brown print. Trim away the excess lengths that extend beyond the quilt top. The completed quilt top should measure 57½" x 63½", including the seam allowances.

COMPLETING the QUILT

Layer the quilt top, batting, and backing. Quilt the layers. Join the black binding strips to make one length and use it to bind the quilt.



Assembly diagram

Every effort has been made to ensure that all projects are error free. All the information is presented in good faith, however no warranty can be given nor results guaranteed as we have no control over the execution of instructions. Therefore, we assume no responsibility for the use of this information or damages that may occur as a result. When errors are brought to our attention, we make every effort to correct and post a revision as soon as possible. Please make sure to check www.henryglassfabrics.com for pattern updates prior to starting the project. We also recommend that you test the project prior to cutting for kits. Finally, all free projects are intended to remain free to you and are not for resale or other forms of distribution.

 **Henry Glass & Co., Inc.**

©2025 Kim Diehl