



Finished Size: **79" x 79" (2.00m x 2.00m)**

Finished Block Size: **12" x 12" (30.48cm x 30.48cm)**

Fabric Collection Name and Fabric Designer: **Magical Desert by Mayo Moreno of Safari of Ideas**

Technique: **Piecing**

Designed by: **Denise Russell of Pieced Brain**

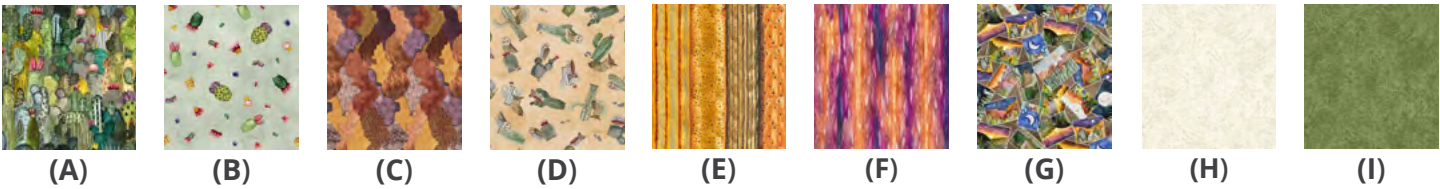
Skill Level: **Advanced Beginner**

Tech Edited by: **Katie Vogt**

Fabric Requirements

DESIGN	COLOR	ITEM ID	YARDAGE
(A) Cactus Crowd	Matcha	2073-64	1 $\frac{2}{3}$ yard (1.52m)
(B) Cactus Flowers	Sage	2076-61	$\frac{3}{4}$ yard (0.69m)
(C) Mountainscape	Butterscotch	2078-48	$\frac{2}{3}$ yard (0.61m)
(D) Owl Toss	Sepia	2079-34	$\frac{3}{4}$ yard (0.69m)
(E) Cactus Stripe	Butterscotch	2080-48	$\frac{1}{3}$ yard (0.30m)
(F) Sunset	Raspberry	2081-57*	1 yard (0.91m)
(G) Landscape toss	Mocha	2082-38	$\frac{5}{8}$ yard (0.57m)
(H) Brushstrokes	Off White	3200-44	3 yards (2.74m)
(I) Brushstrokes	Meadow	3200-66	$\frac{1}{8}$ yard (0.11m)

* includes binding



Backing (Purchased Separately)

44" (1.12m) wide			
Owl Toss	Sepia	2079-34	5 yards (4.57m)
OR			
108" (2.74m) wide			2 $\frac{1}{2}$ yards (2.29m)



Backing
44"

Additional Materials:

- 100% Cotton Thread
- Batting: 87" x 87" (2.21m x 2.21m)

All possible care has been taken to ensure the accuracy of this pattern. We are not responsible for printing errors or the manner in which individual work varies.
Please read the instructions carefully before starting this project. If kitting it is recommended a sample is made to confirm accuracy.
All free projects are intended to remain free and are not for resale.

CUTTING

Notes:

- Please make sure to check henryglassfabrics.net for pattern updates prior to starting the project.
- All strips are cut across the width of fabric (WOF) from selvage to selvage edge unless otherwise noted.

Fabric A, cut:

- (1) 9" x WOF; subcut
 - (10) 2" x 9" rectangles (Block 3)
 - (10) 2" x 7½" rectangles (Block 3)
- (8) 4" x WOF for the border
- (5) 2" x WOF; subcut
 - (8) 2" x 11½" rectangles (Block 1)
 - (8) 2" x 10" rectangles (Block 1)

Fabric B, cut:

- (2) 6½" x WOF; subcut
 - (28) 2" x 6½" rectangles (Blocks 2, 3, 4)
 - (12) 2" x 5" rectangles (Blocks 2, 3, 4)
- (4) 2" strips; subcut
 - (16) 2" x 5" rectangles, total of 28 (Blocks 2, 3, 4)
 - (8) 2" x 4" rectangles (Block 1)
 - (8) 2" x 2½" rectangles (Block 1)

Fabric C, cut:

- (1) 11½" x WOF; subcut
 - (8) 2" x 11½" rectangles (Block 2)
 - (8) 2" x 10" rectangles (Block 2)
- (1) 9" x WOF; subcut
 - (10) 2" x 9" rectangles (Block 4)
 - (10) 2" x 7½" rectangles (Block 4)

Fabric D, cut:

- (1) 11½" x WOF; subcut
 - (10) 2" x 11½" rectangles (Block 3)
 - (10) 2" x 10" rectangles (Block 3)
- (5) 2" x WOF; subcut
 - (28) 2" x 4" rectangles (Blocks 2, 3, 4)
 - (28) 2" x 2½" rectangles (Blocks 2, 3, 4)

Fabric E, cut:

- (4) 2" x WOF; subcut
 - (8) 2" x 9" rectangles (Block 2)
 - (8) 2" x 7½" rectangles (Block 2)

Fabric F, cut:

- (4) 2" x WOF; subcut
 - (8) 2" x 9" rectangles (Block 1)
 - (8) 2" x 7½" rectangles (Block 1)
- (9) 2½" x WOF for the binding
- (1) 1½" x WOF; subcut
 - (20) 1½" squares (Blocks 3, 4)

Fabric G:

- (1) 11½" x WOF; subcut
 - (10) 2" x 11½" rectangles (Block 4)
 - (10) 2" x 10" rectangles (Block 4)
- (3) 2" x WOF; subcut
 - (8) 2" x 6½" rectangles (Block 1)
 - (8) 2" x 5" rectangles (Block 1)

Fabric H, cut:

- (2) 12½" x WOF; subcut
 - (36) 1½" x 12½" rectangles
 - Cut the remainder of the 2nd strip into
 - (2) 5" x 25" strips and (1) 1½" x 25" strip;
 - then subcut
 - (36) 1½" x 5" rectangles
- (2) 11½" x WOF; subcut
 - (36) 1½" x 11½" rectangles
 - Cut the remainder of the 2nd strip into
 - (2) 4" x 25" strips and (1) 1½" x 25" strip;
 - then subcut
 - (36) 1½" x 4" rectangles
- (2) 10" x WOF; subcut
 - (36) 1½" x 10" rectangles
 - (8) 1½" x 9" rectangles
 - (8) 1½" x 7½" rectangles
- (1) 9" x WOF; subcut
 - (26) 1½" x 9" rectangles
- (2) 7½" x WOF; subcut
 - (26) 1½" x 7½" rectangles
- (3) 6½" x WOF; subcut
 - (36) 1½" x 6½" rectangles
 - Cut the remainder of the 2nd strip into
 - (2) 2½" x 25" strips and
 - (1) 1½" x 25" strip; then subcut
 - (36) 1½" x 2½" rectangles
- (3) 1½" x WOF; subcut
 - (2) 1½" x 9" rectangles, total of 36
 - (2) 1½" x 7½" rectangles, total of 36
 - (36) 1½" squares

Fabric I, cut:

- (1) 1½" x WOF; subcut
 - (16) 1½" squares (Blocks 1, 2)

All possible care has been taken to ensure the accuracy of this pattern. We are not responsible for printing errors or the manner in which individual work varies.

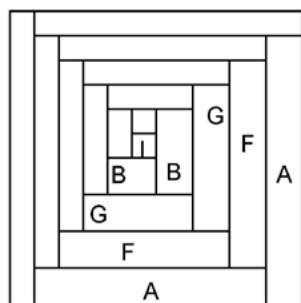
Please read the instructions carefully before starting this project. If kitting it is recommended a sample is made to confirm accuracy.

All free projects are intended to remain free and are not for resale.

SEWING

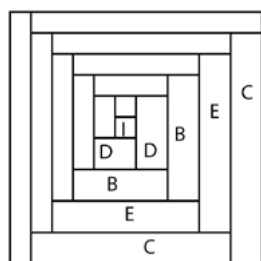
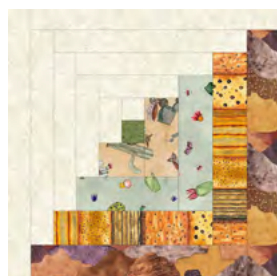
- **Note:** All seam allowances are $\frac{1}{4}$ " (0.64cm). Sew pieces with right sides together. Press seam allowances away from the center for all blocks.

Block Layout Diagrams



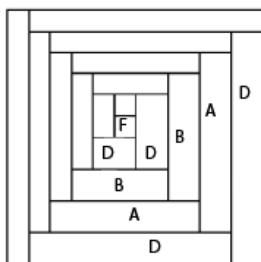
BLOCK 1 – Make 8

Fabrics: A, F, G, B, I



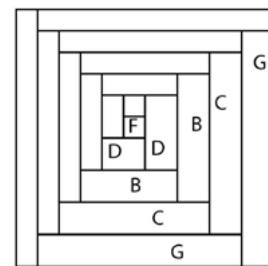
BLOCK 2 – Make 8

Fabrics: C, E, B, D, I



BLOCK 3 – Make 10

Fabrics: D, A, B, F



BLOCK 4 – Make 10

Fabrics: G, C, B, D, F

1. Refer to the cutting instructions and sort the print rectangles by block number and the **Fabric H** rectangles by size to facilitate block construction.
2. For Block 1, gather the print rectangles, Fabric I squares, and 8 **Fabric H** cuts of each size: $1\frac{1}{2}$ " squares and the $1\frac{1}{2}$ " x $2\frac{1}{2}$ ", $1\frac{1}{2}$ " x 4", $1\frac{1}{2}$ " x 5", $1\frac{1}{2}$ " x $6\frac{1}{2}$ ", $1\frac{1}{2}$ " x $7\frac{1}{2}$ ", $1\frac{1}{2}$ " x 9", $1\frac{1}{2}$ " x 10", $1\frac{1}{2}$ " x $11\frac{1}{2}$ ", and $1\frac{1}{2}$ " x $12\frac{1}{2}$ " rectangles.
3. Sew a $1\frac{1}{2}$ " **Fabric H** square to a $1\frac{1}{2}$ " **Fabric I** square. Press toward the darker fabric. Sew a $1\frac{1}{2}$ " x $2\frac{1}{2}$ " **Fabric H** rectangle to the left side. Press away from the center. Make 8 units (**Fig. 1**).

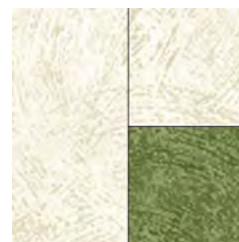


Fig. 1

All possible care has been taken to ensure the accuracy of this pattern. We are not responsible for printing errors or the manner in which individual work varies.

Please read the instructions carefully before starting this project. If kitting it is recommended a sample is made to confirm accuracy.

All free projects are intended to remain free and are not for resale.

4. Sew the 2" x 2½" **Fabric B** rectangles to the bottom of the units. Press as before. Sew the 2" x 4" **Fabric B** rectangles to the right side and press (**Fig. 2**). From here on out, press after every addition.



Fig. 2

5. Sew the 1½" x 4" **Fabric H** rectangles to the top of the units. Sew the 1½" x 5" **Fabric H** rectangles to the left side (**Fig. 3**).



Fig. 3

6. Sew the 2" x 5" **Fabric G** rectangles to the bottom of the units. Sew the 2" x 6½" **Fabric G** rectangles to the right side. Sew the 1½" x 6½" **Fabric H** rectangles to the top and the 1½" x 7½" **Fabric H** rectangles to the left side (**Fig. 4**).

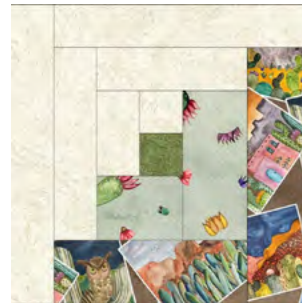


Fig. 4

7. Sew the 2" x 7½" **Fabric F** rectangles to the bottom of the units. Sew the 2" x 9" **Fabric F** rectangles to the right side. Sew the 1½" x 9" **Fabric H** rectangles to the top and the 1½" x 10" **Fabric H** rectangles to the left side (**Fig. 5**).



Fig. 5

All possible care has been taken to ensure the accuracy of this pattern. We are not responsible for printing errors or the manner in which individual work varies.

Please read the instructions carefully before starting this project. If kitting it is recommended a sample is made to confirm accuracy.

All free projects are intended to remain free and are not for resale.

8. Sew the 2" x 10" **Fabric A** rectangles to the bottom of the units. Sew the 2" x 11½" **Fabric A** rectangles to the right side. Sew the 1½" x 11½" **Fabric H** rectangles to the top and the 1½" x 12½" **Fabric H** rectangles to the left side to complete (8) 12½" Block 1 (**Block 1 Layout Diagram**).
9. Repeat steps 3 – 8 to make 8 Block 2, 10 Block 3, and 10 Block 4, referring to the Block Layout Diagrams for fabric placement, for a total of (36) 12½" blocks.

QUILT TOP ASSEMBLY

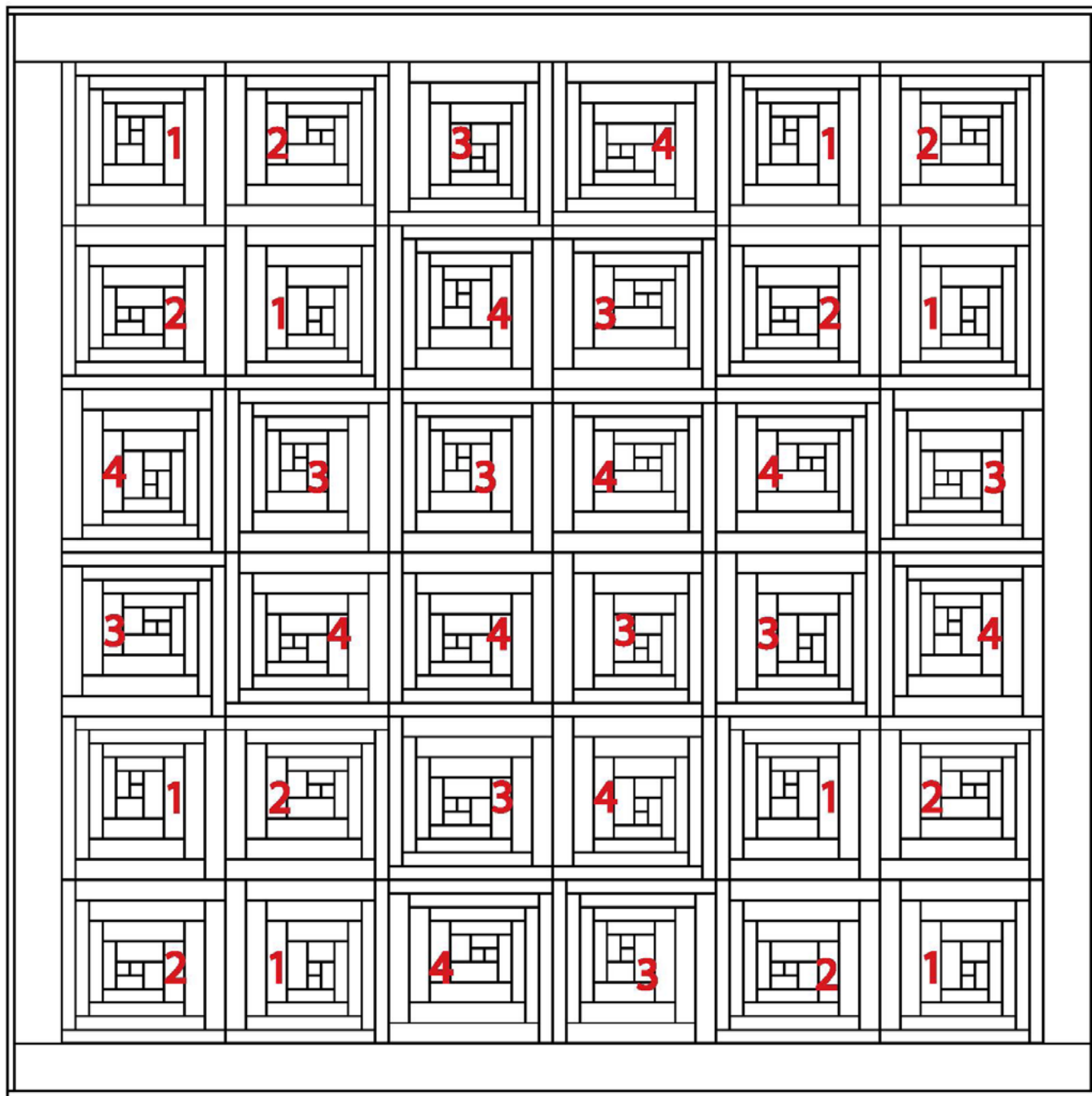
Note: Follow the Quilt Layout Diagram (page 8) while assembling the quilt top.

10. Referring to the quilt photo and diagram for block placement and color orientation, lay out 6 rows of 6 blocks. Sew the blocks together in each row. Press the seams in opposite directions from row to row. Matching adjacent seams, sew the rows together in order. Press.
11. For the border, sew the (8) 4" **Fabric A** border strips together end to end using straight seams (because the fabric is directional). Measure the vertical length of the quilt through the center and cut 2 border strips that length. Sew 1 strip to each side of the quilt and press the seams toward the borders. Measure the width of the quilt through the center. Cut 2 border strips that length and sew 1 to the top and 1 to the bottom. Press the seams toward the borders.

FINISHING

12. Sew together the (9) 2½" **Fabric F** binding strips end to end using diagonal seams. Press the seams open. Press the binding strip in half with the wrong sides together.
13. Layer the backing (wrong side up), batting, and quilt top (right side up). Baste the layers together and quilt as desired. Trim excess batting and backing even with the top of the quilt.
14. Leaving an 8" tail of binding and beginning along an edge of the quilt top, matching the raw edges of the binding to the raw edges of the quilt. Sew the binding to the outside edge around all four sides and miter corners. Stop sewing approximately 12" from where you started and backstitch.
15. Lay both loose ends of the binding flat along the quilt edge. Where these two loose ends meet, fold them back onto themselves and press to form a crease. Using this crease as your stitching line, sew the two open ends of the binding together, with the right sides matching. Trim the seam to ¼" and press it open. Finish sewing the binding to the quilt.
16. Turn the binding over the raw edge to the back of the quilt and hand or machine stitch in place.

Quilt Layout



All possible care has been taken to ensure the accuracy of this pattern. We are not responsible for printing errors or the manner in which individual work varies.

Please read the instructions carefully before starting this project. If kitting it is recommended a sample is made to confirm accuracy.

All free projects are intended to remain free and are not for resale.